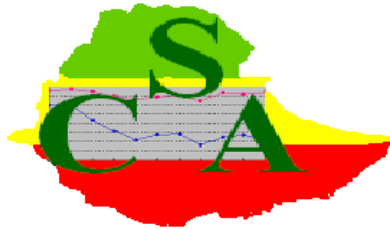


በኢትዮጵያ ፌዴራላዊ ዲሞክራሲያዊ ሪፐብሊክ
 በብሔራዊ ፕላን ኮሚሽን
 የማዕከላዊ ስታቲስቲክስ ኤጀንሲ



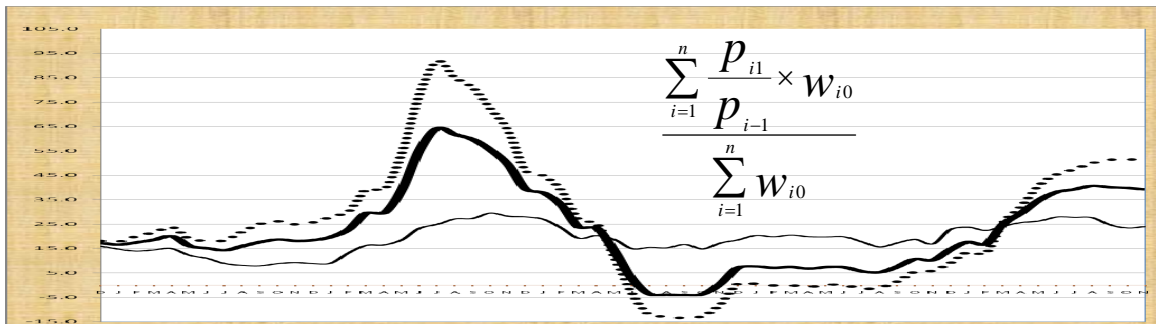
THE FEDERAL DEMOCRATIC REPUBLIC OF ETHIOPIA
 NATIONAL PLANNING COMMISSION
CENTRAL STATISTICAL AGENCY

የአገር አቀፍና የክልሎች የሽማግቾች ዋጋ መመዘኛ ኢንዱክሶች
 የመጋቢት ወር 2009 ዓ.ም.

[ታህሳስ 2004= 100]

መረጃ ቁጥር 49

COUNTRY AND REGIONAL LEVEL CONSUMER PRICE INDICES



[December 2011 = 100]

For the month of March 2017

Information No. 49

Tel: 251-11-1 553011

Fax: 251-11-1550334.

Web-site: www.csa.gov.et

አዲስ አበባ

መጋቢት 27 ቀን 2009 ዓ.ም.

ADDIS ABABA

05 April 2017

መግቢያ..... 1
 የወሩ ዋጋ ግሽበት ሁኔታ 7

የዘንድሮውና የአምናው ተመሳሳይ ወሮች የሽማቾች ዋጋ መመዘኛ ጠቋሚ አሀዝ ንፅፅር በአገር አቀፍ ደረጃ 10

የዘንድሮውና የአምናው ተመሳሳይ ወሮች የሽማቾች ዋጋ መመዘኛ ጠቋሚ አሀዝ ንፅፅር በአገር አቀፍና በክልሎች ደረጃ..... 11

የሠንጠረዦች ዝርዝር

ሠንጠረዥ ሀ: በጥናቱ የተሸፈኑ ገበያዎችና በኢንዱስትሪ ማዕቀፍ የተካተቱ ዕቃዎችና በዕቃዎች/አገልግሎቶች ብዛት በክልል..... 2

ሠንጠረዥ 1ሀ: ጠቅላላ የሽማቾች ዋጋ መመዘኛ ኤንዱስትሪ በስሩ የተካተቱ ክፍሎች በአገር አቀፍ ደረጃ..... 13

ሠንጠረዥ 1ለ: ጠቅላላ ምግብና የምግብ ክፍሎች የሽማቾች ዋጋ መመዘኛ ኤንዱስትሪ በአገር አቀፍ ደረጃ..... 14

ሠንጠረዥ 1ሐ: አገር አቀፍ የቤት ኪራይ፣ የቤት መስሪያ ዕቃዎች፣ ፎቃና ኬንሮጂ የሽማቾች ዋጋ መመዘኛ ኤንዱስትሪ 15

ሠንጠረዥ 2ሀ: ጠቅላላ የሽማቾች ዋጋ መመዘኛ ኤንዱስትሪ በአገር አቀፍና በክልሎች ደረጃ 16

ሠንጠረዥ 2ለ: የምግብ ዋጋ መመዘኛ ኤንዱስትሪ ማጠቃለያ በአገር አቀፍ እና በክልሎች ደረጃ 18

ሠንጠረዥ 3ሀ: ጠቅላላ የሽማቾች ዋጋ መመዘኛ ኤንዱስትሪ በስሩ የተካተቱ ክፍሎች ለአዲስ አበባ ከተማ መስተዳድር 20

ሠንጠረዥ 3ለ: ጠቅላላ ምግብና የምግብ ክፍሎች የሽማቾች ዋጋ መመዘኛ ኤንዱስትሪ ለአዲስ አበባ ከተማ መስተዳድር 21

ሠንጠረዥ 4ሀ: ጠቅላላ የሽማቾች ዋጋ መመዘኛ ኤንዱስትሪ በስሩ የተካተቱ ክፍሎች ለአፋር ክልላዊ መንግስት..... 22

ሠንጠረዥ 4ለ: ጠቅላላ ምግብና የምግብ ክፍሎች የሽማቾች ዋጋ መመዘኛ ኤንዱስትሪ ለአፋር ክልላዊ መንግስት..... 23

ሠንጠረዥ 5ሀ: ጠቅላላ የሽማቾች ዋጋ መመዘኛ ኤንዱስትሪ በስሩ የተካተቱ ክፍሎች ለአማራ ክልላዊ መንግስት..... 24

ሠንጠረዥ 5ለ: ጠቅላላ ምግብና የምግብ ክፍሎች የሽማቾች ዋጋ መመዘኛ ኤንዱስትሪ ለአማራ ክልላዊ መንግስት..... 25

ሠንጠረዥ 6ሀ: ጠቅላላ የሽማቾች ዋጋ መመዘኛ ኤንዱስትሪ በስሩ የተካተቱ ክፍሎች ለቤንሻንጉል-ጉሙዝ ክልላዊ መንግስት..... 26

ሠንጠረዥ 6ለ: ጠቅላላ ምግብና የምግብ ክፍሎች የሽማቾች ዋጋ መመዘኛ ለቤንሻንጉል-ጉሙዝ ክልላዊ መንግስት..... 27

<p>ወንጠረዥ 7ሀ: ጠቅላላ የሽማግሌት ዋጋ መመዘኛ ኤንደክስና በስሩ የተካተቱ ክፍሎች ለድሬደዋ አስተዳደር ካውንስል</p>	28
<p>ወንጠረዥ 7ለ: ጠቅላላ ምግብና የምግብ ክፍሎች የሽማግሌት ዋጋ መመዘኛ ለድሬደዋ አስተዳደር ካውንስል</p>	29
<p>ወንጠረዥ 8ሀ: ጠቅላላ የሽማግሌት ዋጋ መመዘኛ ኤንደክስና በስሩ የተካተቱ ክፍሎች ለጋምቤላ ህዝቦች ክልላዊ መንግስት</p>	30
<p>ወንጠረዥ 8ለ: ጠቅላላ ምግብና የምግብ ክፍሎች የሽማግሌት ዋጋ መመዘኛ ለጋምቤላ ህዝቦች ክልላዊ መንግስት</p>	31
<p>ወንጠረዥ 9ሀ: ጠቅላላ የሽማግሌት ዋጋ መመዘኛ ኤንደክስና በስሩ የተካተቱ ክፍሎች ለለሐረሪ ህዝብ ክልላዊ መንግስት</p>	32
<p>ወንጠረዥ 9ለ: ጠቅላላ ምግብና የምግብ ክፍሎች የሽማግሌት ዋጋ መመዘኛ ኤንደክስ ለለሐረሪ ህዝብ ክልላዊ መንግስት</p>	33
<p>ወንጠረዥ 10ሀ: ጠቅላላ የሽማግሌት ዋጋ መመዘኛ ኤንደክስና በስሩ የተካተቱ ክፍሎች ለአሮሚያ ክልላዊ መንግስት</p>	34
<p>ወንጠረዥ 10ለ: ጠቅላላ ምግብና የምግብ ክፍሎች የሽማግሌት ዋጋ መመዘኛ ኤንደክስ ለአሮሚያ ክልላዊ መንግስት</p>	35
<p>ወንጠረዥ 11ሀ: ጠቅላላ የሽማግሌት ዋጋ መመዘኛ ኤንደክስና በስሩ የተካተቱ ክፍሎች ለደ.ኢ.ብ.ብ.ህ ክልላዊ መንግስት</p>	36
<p>ወንጠረዥ 11ለ: ጠቅላላ ምግብና የምግብ ክፍሎች የሽማግሌት ዋጋ መመዘኛ ኤንደክስ ለደ.ኢ.ብ.ብ.ህ ክልላዊ መንግስት</p>	37
<p>ወንጠረዥ 12ሀ: ጠቅላላ የሽማግሌት ዋጋ መመዘኛ ኤንደክስና በስሩ የተካተቱ ክፍሎች ለሶማሌ ክልላዊ መንግስት</p>	38
<p>ወንጠረዥ 12ለ: ጠቅላላ ምግብና የምግብ ክፍሎች የሽማግሌት ዋጋ መመዘኛ ኤንደክስ ለሶማሌ ክልላዊ መንግስት</p>	39
<p>ወንጠረዥ 13ሀ: ጠቅላላ የሽማግሌት ዋጋ መመዘኛ ኤንደክስና በስሩ የተካተቱ ክፍሎች ለትግራይ ክልላዊ መንግስት</p>	38
<p>ወንጠረዥ 13ለ: ጠቅላላ ምግብና የምግብ ክፍሎች የሽማግሌት ዋጋ መመዘኛ</p>	41

CONTENTS

	Page
Introduction.....	4
Inflation Rate.....	8
Comparison of CPI Movements, Current Vs Last Year's Similar Months, at country Level.....	10
Comparison of CPI Movements, Current Vs Last Year's Similar Months, at country and Regional Levels.....	11

List of Tables

Table a: Number of Markets Covered and Basket of Commodities by Region.....	2
Table 1a: General Consumer Price Index and Its Components at Country Level.....	13
Table 1b: Consumer Price Index of Total Food and Its Components at Country Level.....	14
Table 1c: Consumer Price Index of House Rent, Construction Materials, Water, Fuel and Power and Its Components at Country Level.....	15
Table 2a: Summary of General Consumer Price Indices at Country and Regional Levels.....	16
Table 2b: Summary of Consumer Price Indices of Food at Country and Regional Levels.....	18
Table 3a: General Consumer Price Index and Its Components for the City of Addis Ababa Administration.....	20
Table 3b: Consumer Price Index of Total Food and Its Components for the City of Addis Ababa Administration.....	21
Table 4a: General Consumer Price Index and Its Components for the Afar Regional State.....	22
Table 4b: Consumer Price Index of Total Food and Its Components for the Afar Regional State.....	23

Table 5a: General Consumer Price Index and Its Components for the Amhara Regional State.....	24
Table 5b: Consumer Price Index of Total Food and Its Components for the Amhara Regional State.....	25
Table 6a: General Consumer Price Index and Its Components for the Benishangul-Gumuz Regional State.....	26
Table 6b: Consumer Price Index of Total Food and Its Components for the Benishangul-Gumuz Regional State.....	27
Table 7a: General Consumer Price Index and Its Components for the Dire Dawa Administrative Council.....	28
Table 7b: Consumer Price Index of Total Food and Its Components for the Dire Dawa Administrative Council.....	29
Table 8a: General Consumer Price Index and Its Components for the Gambela Peoples Regional State.....	30
Table 8b: Consumer Price Index of Total Food and Its Components for the Gambela Peoples Regional State.....	31
Table 9a: General Consumer Price Index and Its Components for the Harari Peoples Regional State.....	32
Table 9b: Consumer Price Index of Total Food and Its Components for the Harari Peoples Regional State.....	33
Table 10a: General Consumer Price Index and Its Components for the Oromia Regional State.....	34
Table 10b: Consumer Price Index of Total Food and Its Components for the Oromia Regional State.....	35
Table 11a: General Consumer Price Index and Its Components for the SNNP Regional State.....	36
Table 11b: Consumer Price Index of Total Food and Its Components for the SNNP Regional State.....	37
Table 12a: General Consumer Price Index and Its Components for the Somali Regional State.....	38
Table 12b: Consumer Price Index of Total Food and Its Components for the Somali Regional State.....	39
Table 13a: General Consumer Price Index and Its Components for the Tigray Regional State.....	40
Table 13b: Consumer Price Index of Total Food and Its Components for the Tigray Regional State.....	41

መግቢያ

የሽማግሌዎች ዋጋ መመዘኛ ኢንዱክሽን ማለት ሽማግሌዎች ለተወሰኑ ዕቃዎችና አገልግሎቶች የክፈሉትን አማካይ የዋጋ ለውጥ ለመለካት የሚያገለግል ጠቋሚ አህዝ ነው። የዋጋ መመዘኛ ኢንዱክሽን አብዛኛውን ጊዜ መሠረት የሚያደርገው የቤተሰብ ገቢ፣ ፍጆታና ወጪ ጥናት ውጤት በሆነው ቤተሰቦች በዕቃዎችና ግልጋሎቶች ላይ ባወጡት የመቶኛ ድርሻ መጠንና የወቅቱ የገበያ ዋጋ ላይ ነው። በዚህ ሪፖርት ውስጥ የተካተቱት 12 ኢንዱክሶች (የ11 ክልሎችና የአገር አቀፍ) መሠረት ያደረጉት የማዕከላዊ ስታቲስቲክስ ኤጀንሲ በ2003 በጀት ዓመት በመላ አገሪቱ በናሙና በተመረጡ ቦታዎች ያካሄደውን የቤተሰብ ገቢ፣ ፍጆታና ወጪ ጥናት ውጤት ነው።

ይህ ታህሳስ ወር 2004 ዓ.ምን መሠረት ያደረገው (ታህሳስ 2004=100) የሽማግሌዎች ዋጋ መመዘኛ ኢንዱክሽን በክልል ደረጃ ሲዘጋጅ በዓይነቱ ለሦስተኛ ጊዜ የተዘጋጀ ሲሆን በታህሣሥ 1999 ዓ.ም. መሠረት ያደረገውን የሽማግሌዎች መመዘኛ ኢንዱክሽን የሚተካ ነው። በአገር አቀፍ ደረጃ ከ1988 ጀምሮና በአዲስ አበባ ከተማ ደረጃ ደግሞ ከ1955 ዓ.ም ጀምሮ በየወሩ ተመሳሳይ ኢንዱክሶች የተዘጋጁ ለተጠቃሚዎች ሲሰራጩ መቆየታቸው ይታወቃል። እነዚህ 12 የዋጋ መመዘኛ ኢንዱክሶች በአገሪቱ የሚገኙ 11 ክልሎችና የአገር አቀፍን ሪፖርት ጨምሮ የሚሸፍነው የዕቃዎችና የአገልግሎቶችን ክምችት በያዙ ሁለት ዋና ክፍሎች የተከፈሉ ናቸው። እነሱም፡- የምግብና ምግብ ነክ ያልሆኑ መመዘኛ ኢንዱክሶች ሲሆን ምግብ ነክ ያልሆኑ መመዘኛ ኢንዱክሽን እንደገና በ11 ንዑስ ክፍሎች ይከፈላል። እነዚህም መጠጥ፣ ሲጃራና ትምህርት፣ ልብስና መጫሚያ፣ የቤት ኪራይ፣ የቤት መሥሪያ ዕቃዎች፣ ውሃና ኢነርጂ፣ የቤት ዕቃዎች፣ የቤት ማስገጫዎች፣ የቤት ቁሳቁስና የቤት ሠራተኛ ደመወዝ፣ ሕክምና፣ ትራንስፖርት፣ መገናኛ፣ መዝናኛና ባህል፣ ትምህርት፣ ራስቶራንትና ሆተሎች እንዲሁም ሌሎች ዕቃዎችና አገልግሎቶች ሲሆኑ የሁሉም ክፍሎች አጠቃላይ ውጤት የሚሆነው ደግሞ የጠቅላላ ዋጋዎች መመዘኛ ኢንዱክሽን ነው።

በሁሉም ክልሎች የጠቅላላ ዋጋ መመዘኛ ኢንዱክሶች ስሌት አብዛኛውን የመቶኛ ወጪ ድርሻ የሚይዘው የምግብና አልኮል ያልሆኑ መጠጦች መመዘኛ ኢንዱክሽን ሲሆን በሁሉም የምግብ ዋጋ መመዘኛ ኢንዱክሶች ዋና ዋና ክፍሎች ዳቦና እህል፣ ሥጋ፣ ወተት፣ አይብና ዕንቁላል፣ ዘይትና ቅባቶች፣ ፍራፍሬ፣ አትክልትና ጥራጥሬ፣ ስጌር ማርና ቸኮሌት፣ ሌሎች ምግቦችና አልኮል ያልሆኑ መጠጦች ናቸው።

ለዋጋ ኢንዱክሶቹ የተመረጡት ዕቃዎችና አገልግሎቶች የዋጋ መረጃ የሚሰጠው በየዙን/ በየልዩ ወረዳ በናሙና በተመረጡ ወካይ ከተሞች ውስጥ ባሉ የገበያ ቦታዎች ነው። በመሆኑም ከእያንዳንዱ ዞን ሁለት ከተሞች (የገበያ ቦታዎች) የተመረጡ ሲሆን እንደዚሁም በእያንዳንዱ ልዩ ወረዳ አንድ ከተማ (የገበያ ቦታ) በጥናቱ እንዲካተት ተደርጓል።

በእነዚህ ከተሞች ውስጥ ተመድበው ለሚሰሩ መረጃ ሰብሳቢዎች በየበጀት ዓመቱ

መጨረሻ በመረጃ አሰባሰብ ዘዴው ላይ ስልጠና የሚሰጥ ሲሆን ለአሰባሰቡ የሚረዱ የመስክ መገልገያ መሣሪያዎች (ሚዛን፣ ሜተር ... ወዘተ) ይሰጣቸዋል። እነዚህ መሣሪያዎችን በመጠቀም በየወሩ የዋጋ መረጃዎችን ከነጋዴዎች ይሰበስባሉ። አንዳንድ ጊዜም አንድ በላተኛ ወይም ገዢ ከነጋዴ ሲገዛ ቢገኝና ለሥራው ተባባሪነቱን ካሳየ መረጃው ከርሱም ይሰበስባል። የችርቻሮ ዋጋ መረጃ የሚሰበሰበው እንደ አወሮፓውያን ዘመን አቆጣጠር ወሩ በገባ ከ1ኛው ቀን አንስቶ አስከ 15ኛው ቀን ነው። የክልል ኢንዱስትሪን ለማስላት ለኢንዱስትሪ ለተመረጡት ዕቃዎችና አገልግሎቶች አማካይ የችርቻሮ ዋጋቸውን የጂኦሜትሪክ ሚን ዘዴ ጥቅም ላይ ውሎአል። የኢንዱስትሪ ሪፖርቱም በየወሩ ለተጠቃሚዎች በዚህ መልክ ይቀርባል።

የአገር አቀፍ የችርቻሮ ዋጋ መመዘኛ ኢንዱስትሪ የሚሰላው እያንዳንዱ ክልል ለአገር አቀፍ የቤተሰብ ወጪ ያለውን የመቶኛ ድርሻ መሠረት በማድረግ ነው። በመሆኑም ለአገር አቀፍ ኢንዱስትሪ ስሌት ከ94 በመቶ በላይ አስተዋጽኦ የሚያደርጉ ክልሎች በቅደም ተከተል ኦሮሚያ፣ አማራ፣ የደቡብ ብሔር ብሔረሰቦችና ሕዝቦች፣ አዲስ አበባና ትግራይ ሲሆኑ የተቀሩት ክልሎች በየወሩ ለሚታየው አገር አቀፍ የችርቻሮ ዋጋ መመዘኛ ኢንዱስትሪ ስሌት የሚኖራቸው አስተዋጽኦ ከስድስት በመቶ የማይበልጥ ነው።

ለችርቻሮ ዋጋ ጥናት በአጠቃላይ 119 የገበያ ቦታዎች የተመረጡ ሲሆን በእያንዳንዱ ክልል የተመረጡ የናሙና ገበያዎች ብዛትና በየኢንዱስትሪዎቹ ማዕቀፍ የተካተቱ ዕቃዎች/አገልግሎቶች ብዛት ከዚህ በታች ቀርቦአል።

ሠንጠረዥ ሀ: በጥናቱ የተሸራኑ ገበያዎችና በኢንዱስትሪ ማዕቀፍ የተካተቱ ዕቃዎች/አገልግሎቶች ብዛት በክልል

Table A: Number of Markets Covered and Basket of Commodities by Region

ተራ ቁጥር	ክልል	የገበያ ቦታዎች ብዛት	በኢንዱስትሪ የተካተቱ ዕቃዎች/ አገልግሎቶች ብዛት			Region
			ህሳስ 1993=100	ህሳስ 1999=100	ህሳስ 2004=100	
1	ትግራይ	8	114	143	157	Tigray
2	አፋር	4	85	153	123	Afar
3	አማራ	20	118	144	160	Amhara
4	ኦሮሚያ	24	127	161	175	Oromia
5	ሶማሌ	6	85	122	120	Somalie
6	ቤኒሻንጉል ጉምዝ	6	111	142	164	Benishangul-Gumuz
7	ደ.ብ.ብ.ሀ	31	130	152	168	SNNP
8	ጋምቤላ	3	105	103	131	Gambela
9	ሐረሪ	2	102	158	115	Harari
10	አዲስ አበባ ከተማ	12	175	193	165	Addis Ababa City
11	ድሬዳዋ አስተዳደር	3	121	150	139	Dire Dawa Administrative
	ድምር	119				Total
Sr.No.		Number of Markets	Basket of Commodities			

ለጠቋሚ አሀዙ ክንዋኔ ዋናው ነገር በጠቋሚ አሀዙ ማዕቀፍ ተካትተው በዋናነት የሚያገለግሉ ዕቃዎችና አገልግሎቶች የመምረጥ ጉዳይ ነው። ጠቋሚ አሀዞች የሚመሠረቱት በአጠቃላይ በናሙና በሚመረጡ ዕቃዎች ላይ ሲሆን በጠቋሚ አሀዙ ማዕቀፍ ውስጥ መካተት የሚገባው ዕቃ መወሰን ግን ሁሌም ቀላል የሚባል ተግባር አይደለም። የተለያዩ የአመራረጥ ዘዴ መጠቀም ቢቻልም የሚመረጡት ዕቃዎች ለረጅም ጊዜ የሚኖራቸው ተፈላጊነት፣ በአስተማማኝ ሁኔታ በገበያ ላይ የመገኘታቸው ጉዳይ፣ ሌሎችን ዕቃዎች የመወከል ብቃትና ክሌሎች ምርቶች ጋር ያላቸው ተወዳዳሪነት መሠረት ያደረገ እንዲሆን ይፈለጋል። በአጠቃላይ የተመረጡት ዕቃዎች በበቂ መጠን የመገኘታቸው ሁኔታ፣ በየወቅቱ ተወዳዳሪነታቸውና ዕቃዎችና አገልግሎቶች ምድቡን የመወከላቸው ብቃትን ማረጋገጥ ያስፈልጋል።

ይህ ታህሳስ 2004 ዓ.ም. መሠረት ያደረገው የሸማቾች ዋጋ መመዘኛ ኢንዱክስ አይነቶችና እያንዳንዱ ዋና ክፍል ያለው የወጪ ድርሻ በገፅ 6 ላይ ይታያል። ይህ ሠንጠረዥ እንደሚያሳየው የምግብ የመቶኛ የወጪ ድርሻ ታህሳስ 1999 ዓ.ም. ከነበረው 57 በመቶ ወደ 53 በመቶ ቀንሷል። በአንፃሩ ደግሞ ምግብ ነክ ያልሆነ መመዘኛ ኢንዱክስ ታህሳስ 1999 ዓ.ም. ከነበረው 43 በመቶ የወጪ ድርሻ ወደ 47 በመቶ ከፍ ብሏል። ባጠቃላይ ሲታይ በሁሉም ክልሎች ኢንዱክስ ላይ የምግብ የወጪ ድርሻ የማይናቅ ቅናሽ ያሳየ ሲሆን ምግብ ነክ ያልሆኑ የወጪ ድርሻ መጠነኛ ድገት አሳይቶአል።

Introduction

The Consumer Price Index (CPI) measures the average change in the price paid by consumers for a fixed market basket of goods and services. It is usually based on household expenditure weights of the goods and services in the basket and their current market prices. The twelve CPI's (i.e., the CPI's of the 11 Regions and the CPI at Country Level) presented in this report are based on the results of the Household Income, Consumption and Expenditure Survey (HICES) conducted by the Central Statistical Agency in 2010/2011 from which expenditure weights are derived for major household goods and services of that period and adjusted using the December 2011 retail prices of the goods and services as a base period.

The December 2011 based CPI updates the previous CPI series (i.e. December 2006 based) and the newly selected baskets are more diversified and the weights are more accurate. It also showed various improvements and incorporates non-food index as an independent group. The new series is constructed for country as a whole and Regional States including Dire Dawa and the Addis Ababa City Administration. However, similar indices had been utilized at Addis Ababa Level since 1963 and at Country, Urban and Rural Levels since 1995/96 and in Country and Regional level since 2000.

All the twelve general indices are divided into two major groups that is food and non-food index. The non-food index has eleven major divisions each, namely: Alcoholic Beverages; Cigarettes and Tobacco; Clothing and Footwear; House Rent, Construction Materials, Water, and Fuel and Power; Furniture, Furnishing, Household Equipment and Operation; Health; Transport; Communication; Recreation, Culture; Education; Restaurants and Hotels; and Miscellaneous Goods and Services. On the other hand, the Food Index has 9 classes. These are: Bread and Cereals; Meat; Milk, Cheese and Eggs; Oil and Fats Spices; Fruits; Vegetables and Pulses, Sugar, Honey and Chocolate; Food Products n.e.c., and Non-alcoholic beverages.

Furthermore, the new CPI based on December 2011 also includes more detailed #Housing, Construction materials, Water and Fuel and Power; components.

For the construction of the current consumer price indices, up to date data on retail prices are collected in the purposely selected sample market places located in representative urban centers in each zone/special weredas of the country. Hence, a total of 119 market places were selected for the retail price survey. In each market place an enumerator is assigned to undertaking the data collection activities. The price data is collected from the 1st day through 15th days of European Calendar month under consideration. To calculate the monthly regional consumer price indices, geometric means of prices of the specific regions are used. The distribution of the market place of each region and items included in the basket of commodities are given on Table A on page 2.

An important factor in constructing a Consumer Price Index is to select the representative basket of goods and services. Including all consumption items into the market basket of goods and services is both cumbersome and unnecessarily costly in term of data collection and processing. Furthermore, it doesn't make sense to include an insignificant weight into an index basket which could not move the price relative up or downwards compared to the general market trend. As a result, basket of goods and services included in the regional baskets are determined by expenditure cut-off point. The total numbers of items included in the regional basket in the December 2011 based indices are given in Table A on page 2.

Country level CPI aggregates the regional group indices and the contributions of the five relatively big regions in terms of the magnitude of the expenditure account for more than 94 percent. These regions are Oromiya, Amhara, SNNP, Addis Ababa and Tigray. On the other hand, the contributions of the remaining regions to the Country Level Consumer Price Index is about six percent.

According to the weights for food and non-food groups in Table B below, the December 2011 based CPI is about 53 percent of household expenditure spent on the food component, which declined by 4 percentage points as compared to the December 2006 based CPI. On the other hand, the expenditure on non-food components increased from 43 percent to 47 percent.

The 2011 CPI adapted the full version of the latest Classification of Individual Consumption by Purpose (COICOP) while the 2006 based CPI was an earlier version of COICOP. The following table shows the different COICOP versions by Comparison. In the 2006 based CPI Recreation, Entertainment and Education; and Transport and Communication were put in the same divisions while the 2011 based CPI separated them as standalone divisions. A new division called Restaurants and Hotels was introduced in the 2011 based CPI by moving the food taken away from home previously categorized with Food to this new division. Non-Alcoholic beverages were taken out of the Non-Food division and moved to the Food division.

Table B: Major groups in the 2006 and 2011 based CPI and their weights at Country Level

Comparison of COICOP Divisions(2006 Vs 2011)	December 2006=100	December 2011=100
1. FOOD AND NON-ALCOHOLIC BEVERAGES	57%	53%
Non - FOOD	43%	47%
2. ALCOHOLIC BEVERAGES AND TOBACCO, NARCOTICS	2.5	4.85
3. CLOTHING AND FOOTWEAR	8.32	6.62
4. HOUSING, WATER, ELECTRICITY, GAS AND OTHER FUELS	20.56	16.34
5. FURNISHINGS, HOUSEHOLD EQUIPMENT AND ROUTINE MAINTENANCE OF THE HOUSE	3.75	5.41
6. HEALTH	1.11	1.08
7. TRANSPORT	2.5	2.80
8. COMMUNICATION	-	1.08
9. RECREATION AND CULTURE	1.1	0.60
10. EDUCATION	-	0.45
11. RESTAURANTS AND HOTELS	-	5.46
12. MISCELLANEOUS GOODS AND SERVICES	3.2	2.56
Total	100	100

የመጋቢት ወር 2009 ዓ.ም. የዋጋ ግሽበት ሁኔታ

ሀ) የ12 ወራት ተንከባላይ አማካይ አገራዊ የዋጋ ግሽበት

ከሠንጠረዥ #ሐ; መረዳት እንደሚቻለው የመጋቢት ወር 2009 ዓ.ም. የተመዘገበው የ12 ወራት ተንከባላይ አማካይ አገራዊ አጠቃላይ የዋጋ ግሽበት ካለፈው ዓመት ተመሳሳይ ወቅት ጋር ሲነጻጸር በ6.9 በመቶ ጭማሪ አሳይቶአል። በመጋቢት ወር 2009 ዓ.ም. አገራዊ የ12 ወራት ተንከባላይ አማካይ የምግብ የዋጋ ግሽበት በ6.1 በመቶ ዕድገት አሳይቶአል። የ12 ወራት ተንከባላይ አማካይ አገራዊ ምግብ ነክ ያልሆኑ የዋጋ ግሽበትም በ7.8 በመቶ ጭማሪ አሳይቶአል። የ12 ወራት ተንከባላይ አማካይ የዋጋ ግሽበት ረዘም ያለ ጊዜ የዋጋ ግሽበት ሁኔታ የሚያሳይ ነው።

ለ) የዋጋ ግሽበት ሁኔታ ካለፈው ዓመት ተመሳሳይ ወር ጋር በማነፃፀር

የዋጋ ግሽበት ሁኔታ ካለፈው ዓመት ተመሳሳይ ወር ጋር በማነፃፀር የሚገኘው ውጤት ወቅታዊ የዋጋ ግሽበት ሁኔታን ይገልጻል። ሠንጠረዥ (መ) የሚያሳየው የዋጋ ግሽበት ሁኔታ ካለፈው ዓመት ተመሳሳይ ወር ጋር በማነፃፀር ነው። ከሠንጠረዥ መረዳት እንደሚቻለው የመጋቢት ወር 2009 ዓ.ም. አጠቃላይ የዋጋ ግሽበት ካለፈው ዓመት በመጋቢት ወር 2008 ዓ.ም. ጋር ሲነጻጸር በ8.5 በመቶ ከፍ ብሎአል። ለዚህ ጭማሪ ምክንያቱ በመጋቢት ወር 2009 ዓ.ም. የተመዘገበው አጠቃላይ የዋጋ መመዘኛ ኢንዱክስ 160.9 በመቶ በመጋቢት ወር 2008 ከተመዘገበው 148.3 በመቶ አጠቃላይ የዋጋ መመዘኛ ኢንዱክስ በልጦ በመገኘቱ ነው። የምግብ ዋጋ ግሽበት የመጋቢት ወር 2009 ዓ.ም. ካለፈው ዓመት የመጋቢት ወር 2008 ዓ.ም. ጋር ሲነጻጸር በ9.6 በመቶ ጭማሪ አሳይቶአል። ለዚህ ጭማሪ ምክንያቱ በመጋቢት ወር 2009 ዓ.ም. የተመዘገበው የምግብ ዋጋ መመዘኛ ኢንዱክስ 160.2 በመቶ በመጋቢት ወር 2008 ዓ.ም. ከተመዘገበው 146.2 በመቶ የምግብ ዋጋ መመዘኛ ኢንዱክስ በልጦ በመገኘቱ ነው። በያዝነው ወር በእህል ክፍሎች (በተለይ በቆሎ) ጭማሪ ታይቶአል። እንዲሁም በአትክልት (በተለይም ቃሪያ፣ ቲማቲምና ኅመን)፣ በጥራጥራና ድንችና ስረስሮች (በተለይ ቆሎ) እና ቡና ዋጋ ላይ ጭማሪ በመታየቱ የዋጋ ግሽበቱ ከፍ እንዲል ምክንያት ሆኗል። ምግብ ነክ ያልሆኑ የኢንዱክሱ ክፍሎች የዋጋ ግሽበት የመጋቢት ወር 2009 ዓ.ም. ካለፈው ዓመት መጋቢት ወር 2008 ዓ.ም. ጋር ሲነጻጸርም የ7.3 በመቶ ጭማሪ አሳይቶአል። ምግብ ነክ ያልሆኑ የኢንዱክሱ ክፍሎች የዋጋ ግሽበት ካለፈው ተመሳሳይ ወቅት ጋር ሲነጻጸር ከፍ እንዲል ካደረጉት ዋና ምክንያቶች ውስጥ በጫት፣ ልብስና መጫሚያ፣ የማገይ እንጨት፣ የቤት ዕቃዎችና የቤት ማሰገጫዎች ላይ የታየው የዋጋ ጭማሪ ነው። በክልል ደረጃ ሲታይ አማራ፣ ድሬዳዋ፣ ሶማሊና ደቡብ ፈጣን የዋጋ ጭማሪ አሳይተዋል።

ሐ) የዋጋ ግሽበት ሁኔታ የአሁኑን ወር ካለፈው ወር ጋር በማነፃፀር

የመጋቢት ወር 2009 ዓ.ም. አጠቃላይ የዋጋ ግሽበት ካለፈው ወር ጋር ሲነጻጸር በ2.0 በመቶ ጭማሪ አሳይቶአል። ወርሃዊ የዋጋ ግሽበት ምጣኔው በመጨረሻዎቹ ሁለት ተከታታይ ወራት መካከል ያለውን የዋጋ ለውጥ ለመለካት ያገለግላል። ወርሃዊ የዋጋ ግሽበት ምጣኔው የወቅቱን ሁኔታ የሚሳይ በመሆኑ የአጭር ጊዜ ክስተቱን ብቻ ያመለክታል።

March 2017 Country Level Inflation Rate

a) 12 months Moving Average Inflation at Country Level

As it is indicated in Table 'C' below the country level overall inflation rate (annual change based on 12 months Moving Average) rose by 6.9 percent in March 2017 as compared to the one observed in a similar period a year ago. The country level food inflation increased by 6.1 percent as compared to the one observed a year ago. The country level Non-food inflation rate increased by 7.8 percent in March 2017 as compared to the one observed in March 2016. The 12 months moving average inflation rate shows the longer term inflationary situation.

b) Inflation based on comparison of Current vs. Last year's similar month at Country Level (Year-on-Year Change)

Inflation based on comparison of Current vs. Last year's similar month shows the current inflation situation. Table (D) shows Inflation rate based on last year's similar month comparison. As can be seen from the table the March 2017 General year-on-year inflation has increased by 8.5 percent as compared to the one observed in March 2016. The 8.5 percent rise in General inflation rate is due to the fact that the General Consumer Price Index (CPI) of 160.9 percent observed in March 2017 was higher than the corresponding 148.3 percent General Consumer Price Index (CPI) observed in March 2016. The year-on-year Food inflation has increased by 9.6 percent in March 2017 as compared to the one observed in March 2016. The reason for the increase in the food Inflation rate was that the 160.2 percent Food Consumer Price Index (CPI) observed in March 2017 was greater than the corresponding 146.2 percent Food Consumer Price Index (CPI) observed in March 2016. There was increase in food prices of Cereals (Specially Maize) during the month under review. Likewise, Vegetables (especially Pepper green, Tomato, and Ethiopian Kale), Pulses, Potatoes and other Tubers (especially Kocho), and coffee showed a rise in their prices which contributed to the rapid rise in the inflation rate during the current month. The Non-Food inflation also increased i.e. by 7.3 percent in March 2017 as compared to the one observed in March 2016. The rise in Inflation in the Non-food component is mainly due to rise in the prices of Chat, Clothing and Footwear, Firewood, and Household goods and furnishings. Region wise, Amhara, Dire Dawa, Somali and SNNP showed rapid increase in their prices.

Inflation based on comparison of Current vs. Last month at Country Level (month-on-month)

The month-on-month General CPI for March 2017 has showed an increase of 2.0 percent as compared to the preceding month. The monthly inflation rate measures the price change between the two latest months. Although up to date, it can be affected by seasonal and other short term effects.

ሠንጠረዥ ሐ: በአገር አቀፍ ደረጃ የ12 ወራት ተንከባላይ አማካይ የዋጋ ግሽበት ሁኔታ

Table C: The Country Level 12 months Moving Average Inflation Rate

በጀት ዓመት (ወር)	የዋጋ ግሽበት ሁኔታ			Budget Year and months
	አጠቃላይ የዋጋ ግሽበት	የምግብ የዋጋ ግሽበት	የምግብ ነክ ያልሆኑ የዋጋ ግሽበት	
ዓመታዊ አማካይ ሐምሌ 2004 - ሰኔ 2005	22.9	26.6	18.4	Annual Average July 2012 – June 2013
ዓመታዊ አማካይ ሐምሌ 2005 - ሰኔ 2007	8.9	6.7	11.6	Annual Average July 2013 – June 2014
ዓመታዊ አማካይ ሐምሌ 2006 - ሰኔ 2007	7.6	6.1	9.3	Annual Average July 2014 – June 2015
ዓመታዊ አማካይ ሐምሌ 2007 - ሰኔ 2008	9.6	11.1	8.0	Annual Average July 2015 – June 2016
የካቲት 2008	10.3	12.5	8.0	February 2016
መጋቢት 2008	10.2	12.2	8.1	March 2016
ሚያዝያ 2008	10.1	11.8	8.2	April 2016
ግንቦት 2008	9.9	11.6	8.1	May 2016
ሰኔ 2008	9.7	11.2	8.0	June 2016
ሐምሌ 2008	9.2	10.3	7.9	July 2016
ከሐሴ 2008	8.7	9.4	7.9	August 2016
መስከረም 2009	8.3	8.6	8.0	September 2016
ጥቅምት 2009	7.8	7.5	8.0	October 2016
ህዳር 2009	7.5	7.1	8.0	November 2016
ታህሳስ 2009	7.3	6.5	8.1	December 2016
ጥር 2009	6.9	6.0	8.0	January 2017
የካቲት 2009	6.8	5.9	7.8	February 2017
መጋቢት 2009	6.9	6.1	7.8	March 2017
Budget Year	Inflation Rate			
	Overall Inflation Rate	Food Inflation Rate	Non-food Inflation Rate	

ሠንጠረዥ መ: የዘንድሮውና የአምናው ተመሳሳይ ወሮች የሽማግሌት ዋጋ መመዘኛ ኢንዱክስ

ለውጥ ንፅፅር በአገር አቀፍ ደረጃ ማጠቃለያ

Table D: Summary of Comparison of CPI Movements, Current vs. Last year's Similar Months at Country Level

በጀት ዓመት (ወር)	የዋጋ ግሽበት ሁኔታ			Budget Year and months
	አጠቃላይ የዋጋ ግሽበት	የምግብ የዋጋ ግሽበት	የምግብ ነክ ያልሆኑ የዋጋ ግሽበት	
ዓመታዊ አማካይ ሐምሌ 2004 - ሰኔ 2005	13.8	13.2	15.0	Annual Average July 2012 – June 2013
ዓመታዊ አማካይ ሐምሌ 2005 - ሰኔ 2007	8.1	5.9	10.5	Annual Average July 2013 – June 2014
ዓመታዊ አማካይ ሐምሌ 2007 - ሰኔ 2007	7.7	7.4	8.0	Annual Average July 2014 – June 2015
ዓመታዊ አማካይ ሐምሌ 2007 - ሰኔ 2008	9.7	11.3	8.1	Annual Average July 2015 – June 2016
የካቲት 2008	8.9	9.2	8.5	February 2016
መጋቢት 2008	7.5	7.3	7.8	March 2016
ሚያዝያ 2008	7.4	6.3	8.7	April 2016
ግንቦት 2008	7.9	8.4	7.4	May 2016
ሰኔ 2008	7.5	7.2	7.8	June 2016
ሐምሌ 2008	6.0	4.1	8.3	July 2016
ነሐሴ 2008	5.9	4.4	7.6	August 2016
መስከረም 2009	6.9	6.1	7.8	September 2016
ጥቅምት 2009	5.6	3.4	8.2	October 2016
ህዳር 2009	7.0	6.1	8.1	November 2016
ታህሳስ 2009	6.7	5.3	8.2	December 2016
ጥር 2009	6.1	5.0	7.4	January 2017
የካቲት 2009	7.0	7.8	6.2	February 2017
መጋቢት 2009	8.5	9.6	7.3	March 2017
Budget Year	Inflation Rate			
	Overall Inflation Rate	Food Inflation Rate	Non-food Inflation Rate	

ሠንጠረዥ ሠ: የአሁኑና ያለፈው ወር የሽማግሌት ዋጋ መመዘኛ ኢንዱስትሪ
ለውጥ ንፅፅር በአገር አቀፍ ደረጃ ማጠቃለያ

Table E: Summary of Comparison of CPI Movements, Current vs. Last month at Country Level

በጀት ዓመት (ወር)	የዋጋ ግንባታ ሁኔታ			Budget Year and months
	አጠቃላይ የዋጋ ግንባታ	የምግብ ግንባታ	የምግብ ነክ ያልሆኑ የዋጋ ግንባታ	
ዓመታዊ አማካይ ሐምሌ 2004 - ሰኔ 2005	0.6	0.3	0.9	Annual Average July 2012 – June 2013
ዓመታዊ አማካይ ሐምሌ 2005 - ሰኔ 2007	0.7	0.5	0.8	Annual Average July 2013 – June 2014
ዓመታዊ አማካይ ሐምሌ 2007 - ሰኔ 2007	0.8	1.0	0.6	Annual Average July 2014 – June 2015
ዓመታዊ አማካይ ሐምሌ 2007 - ሰኔ 2008	0.6	0.6	0.6	Annual Average July 2015 – June 2016
የካቲት 2008	-0.1	-1.3	1.3	February 2016
መጋቢት 2008	0.6	1.1	0.1	March 2016
ሚያዝያ 2008	1.5	1.3	1.7	April 2016
ግንቦት 2008	1.3	2.6	-0.1	May 2016
ሰኔ 2008	1.0	1.3	0.7	June 2016
ሐምሌ 2008	0.5	0.0	1.0	July 2016
ነሐሴ 2008	0.4	1.4	-0.8	August 2016
መስከረም 2009	2.0	3.5	0.3	September 2016
ጥቅምት 2009	-1.0	-2.3	0.6	October 2016
ህዳር 2009	-0.7	-2.1	0.9	November 2016
ታህሳስ 2009	-0.3	-0.9	0.4	December 2016
ጥር 2009	0.6	0.5	0.7	January 2017
የካቲት 2009	0.8	1.3	0.2	February 2017
መጋቢት 2009	2.0	2.8	1.1	March 2017
	<i>Inflation Rate</i>			
	Overall Inflation Rate	Food Inflation Rate	Non-food Inflation Rate	

**የዘንድሮውና የአምናው ተመሳሳይ ወሮች የችርቻሮ ዋጋ መመዘኛ ጠቋሚ አሀዝ
ንፅፅር በአገር አቀፍ ደረጃ**

Comparison of CPI Movements, Current vs Last year's Similar Months at Country Level

ከሠንጠረዥ 1(ሀ) መረዳት እንደሚቻለው የመጋቢት ወር 2009 ዓ.ም የአገር አቀፍ ጠቅላላ የችርቻሮ ዋጋ ኢንዱክስ ከመጋቢት ወር 2008 ዓ.ም ጠቅላላ ኢንዱክስ ጋር ሲነፃፀር በ8.5 ከመቶ ጭማሪ አሳይቶአል። ለዚህ ጭማሪ ምክንያት የሆኑት ምግብና አልኮል ያልሆኑ መጠጦች 9.6 ከመቶ፣ መጠጥ፣ ሲጃራና ትምባሆ በ2.5 ከመቶ፣ ልብስና መጫሚያ በ4.4 ከመቶ፣ የቤት ኪራይ፣ የቤት መሥሪያ ዕቃዎች፣ ዉሃና ኢነርጂ በ10.4 ከመቶ፣ የቤት ዕቃዎች፣ ቤት ማስገጫዎች፣ የቤት ቁሳቁስና የቤት ሠራተኛ ደመወዝ በ5.0 ከመቶ፣ ህክምና 10.4 ከመቶ፣ ትራንስፖርት 9.1 ከመቶ፣ መገናኛ በ2.2 ከመቶ፣ መዝናኛና ባህል የ9.0 ከመቶ፣ ትምህርት በ0.2 ከመቶ፣ ሬስቶራንትና ሆቴሎች በ7.9 ከመቶ እና ሌሎች ዕቃዎችና አገልግሎቶች በ6.0 ከመቶ በየኢንዱስትሪው ላይ ጭማሪ በማሳየታቸው ነው።

The March 2017 Country Level Consumer Price Index has increased by 8.5 percent as compared to March 2016 (Table 1(a)). This increase in the General Consumer Price Index is attributed to the rise observed in the indices of Food and Non-alcoholic beverages 9.6 percent, Alcoholic Beverages and Tobacco 2.5 percent, Clothing and Footwear by 4.4 percent, House Rent, Construction Materials, Water and Fuel and Power by 10.4 percent, Furniture, Furnishings, Household Equipment and Operation by 5.0 percent, Health by 10.4 percent, Transport by 9.1 percent, Communication by 2.2 percent, Recreation and Culture by 9.0 percent, Education by 0.2 percent, Restaurant and Hotels 7.9 percent and Miscellaneous Goods by 6.0 percent.

ሠንጠረዥ 1(ለ) እንደሚያሳየው ካለፈው ዓመት ተመሳሳይ ወር ጋር ሲነፃፀር አብዛኛዎቹ የምግብ ክፍሎች ጭማሪ አሳይተዋል። ዳቦና እህል በ7.2 ከመቶ፣ ሥጋ በ9.6 ከመቶ፣ ወተት፣ አይብና ዕንቁሳል በ6.0 ከመቶ፣ ዘይትና ቅባቶች በ10.3 ከመቶ፣ ፍራፍሬ 9.8 ከመቶ፣ አትክልት፣ ጥራጥራ፣ ድንችና ሌሎች ስራ ስሮች በ11.3 ከመቶ፣ ስኳር ማርና ቼኮሌት በ6.9፣ ሌሎች ምግቦች በ8.8 ከመቶ እና አልኮል ያልሆኑ መጠጦችና ቡና በ21.8 በየኢንዱስትሪው ላይ ዕድገት አሳይተዋል።

Most of the components of Food index showed increase as compared to similar month last year (Table 1(b)). Bread and Cereals by (7.2 percent), Meat (9.6 percent), Milk, Cheese and Eggs (6.0 percent), oils and Fats by (10.3 percent), Fruits by (9.8 percent), Vegetables and Pulses, Potatoes and Tubers declined by (11.3 percent), Sugar, Jam, Honey, and chocolate by (6.9 percent), Other Food Products and spices n.e.c by (8.8 percent), and Non-Alcoholic beverages and Coffee by (21.8 percent).

**የዘንድሮውና የአምናው ተመሳሳይ ወሮች
የችርቻሮ ዋጋ መመዘኛ ጠቋሚ አህዝ ንፅፅር በአገር አቀፍና በክልሎች ደረጃ**
Comparison of CPI Movements, Current vs Last year at Country and
Regional Levels

ከሠንጠረዥ 2(ሀ) መረዳት እንደሚቻለው የመጋቢት ወር 2009 ዓ.ም የአገር አቀፍ ጠቅላላ የችርቻሮ ዋጋ መመዘኛ ኢንዱክስ ከመጋቢት ወር 2008 ዓ.ም ጠቅላላ ኢንዱክስ ጋር ሲነፃፀር በ8.5 ከመቶ ጭማሪ አሳይቶአል። ለዚህ ጭማሪ አስተዋጽኦ ያደረጉት አዲስ አበባ በ6.2 ከመቶ፣ አፋር 4.3 ከመቶ፣ አማራ 11.6 ከመቶ፣ ቤኔሻንጉል ጉሙዝ በ8.6 ከመቶ፣ ድሬዳዋ 12.7 ከመቶ፣ ጋምቤላ 6.4 ከመቶ፣ ሐረር በ1.2 ከመቶ፣ ኦሮሚያ በ3.6 ከመቶ፣ ደቡብ ብሄሮች ብሄረሰቦችና ሕዝቦች 11.7 ከመቶ፣ ሶማሌ በ18.4 ከመቶ እና ትግራይ 5.1 ከመቶ ጭማሪ በማሳየታቸው ነው።

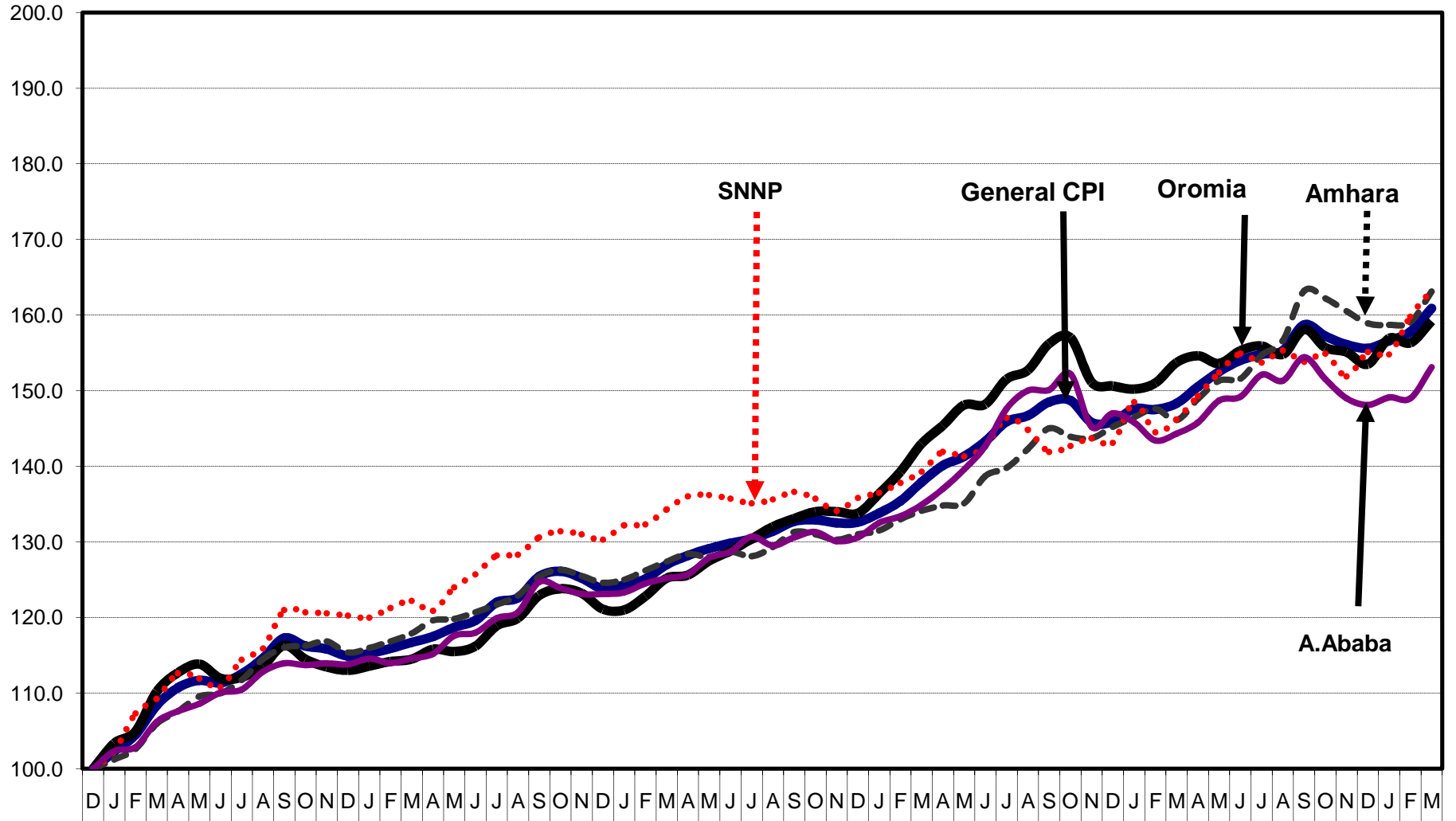
Table 2(a) also displays that the March 2017 Country level General Consumer Price Index has increased by 7.0 percent as compared to March 2016. This increase was attributed to the rise in the indices of its constituent regions; namely: Addis Ababa 6.2 percent , Afar by 4.3 percent, Amhara 11.6 percent, Benishangul Gumuz by 8.6 percent, Dire Dawa 12.7 percent, Gambella 6.4 percent, Harari by 1.2 percent, Oromia 3.6 percent, SNNP by 11.7 percent, Somali by 18.4 percent and Tigray by 5.1 percent.

ሠንጠረዥ 2(ለ) እንደሚያሳየው ለምግብ እንደክስ በ9.6 ከመቶ መጨመር ምክንያት የሆኑት አዲስ አበባ በ6.9 ከመቶ፣ አፋር በ0.6 ከመቶ፣ አማራ በ14.3 ከመቶ፣ ቤኔሻንጉል ጉሙዝ በ10.7 ከመቶ፣ ድሬዳዋ በ12.1 ከመቶ፣ ጋምቤላ በ9.0 ከመቶ፣ ሐረር በ12.5 ከመቶ፣ ኦሮሚያ 0.9 ከመቶ፣ ደቡብ ብሄሮች፣ ብሄረሰቦችና ሕዝቦች በ17.8 ከመቶ፣ ሶማሌ 14.1 ከመቶ እና ትግራይ በ7.9 ከመቶ በምግብ ኢንዱክሶቻቸው ላይ ጭማሪ አሳይተዋል።

Table 2(b) reveals the rise in the food index by 9.6 percent is due to the rise in the indices of the regions namely: Addis Ababa by 6.9 percent, Afar 0.6 percent, Amhara 14.3 percent, Benishangul Gumuz by 10.7 percent, Dire Dawa 12.1 percent, Gambella 9.0 percent, Harari 12.5 percent, Oromia 0.9 percent, SNNP 17.8 percent, Somali 14.1 percent and Tigray 7.9 percent.

General CPI for Country Level and Major Regions

የሽማግሌት ዋጋ ኢንዱክሽን ለአገር አቀፍና ለዋና ዋና ክልሎች



የሽማግሌት ዋጋ መመዘኛ ኢንዱክሽን

ሠንጠረዥ 10፣ ጠቅላላ የሽያጭ ዋጋ መመዘኛ ኢንዱስትሪ ቦሌር የተካተቱ ክፍሎች በአገር አቀፍ ደረጃ

ታህሳስ 2004 = 100

Table 1a: General Consumer Price Index and Its Components at Country Level

December 2011 = 100

ወርና ዓመት	ጠቅላላ ኢንዱስትሪ	ምግብና አልኮሎሊክ መጠጦች	ምግብ ነፃ ያልሆኑ ኢንዱስትሪ	Non-food Consumer Price Index Components											Month an Year
				መጠጥ ሲጃራና ትምባሆ	ልሳሳት መጫጫያ	የቤት ኪራይ መሥሪያ ስቃዎች፣ ጋስ እና ሌሎች ኃይሮች	የቤት ስቃዎች የቤት ቁሳቁስና የቤት ሠራተኛ ደመወዝ	ሕክምና	ትራንስፖርት	መገናኛ	መዝናኛና ባህል	ትምህርት	ሬስቶራንትና ሆቴሎች	ሌሎች አገገሎቶች	
Month an Year	General Index	Food and Non-Alcoholic Beverages	Non-Food Index	Alcoholic Beverages and Tobacco	Clothing and Footwear	Housing, Water, Electricity, Gas and Other Fuels	Furnishings, Household Equipment and Routine Maintenance of the House	Health	Transport	Communication	Recreation and Culture	Education	Restaurants and Hotels	Misellaneous Goods and services	Month an Year
ታህሳስ 2004	100.0	100.0	100.0	100.0	100.0	100.0	100.0	100.0	100.0	100.0	100.0	100.0	100.0	100.0	December 2011
ሐምሌ 2004 - ሰኔ 2005	116.3	117.6	114.8	109.8	115.7	117.4	117.0	121.6	100.1	100.0	111.2	103.0	120.3	112.0	July 2012 - June 2013
ሐምሌ 2005 - ሰኔ 2006	125.7	124.5	127.0	125.1	128.9	131.2	128.6	138.8	100.9	100.0	119.0	105.0	135.3	118.8	July 2013 - June 2014
ሐምሌ 2006 - ሰኔ 2007	135.4	133.8	137.1	144.1	141.4	142.4	138.1	150.4	101.0	100.7	119.1	105.7	143.3	123.2	July 2014 - June 2015
ሐምሌ 2007 - ሰኔ 2008	148.5	148.7	148.2	153.7	150.1	156.5	149.4	164.4	100.8	101.9	137.0	118.4	158.3	128.7	July 2015 - June 2016
2008															2015/2016
ጥር 2008	147.6	146.6	148.6	159.1	150.2	154.5	150.6	167.8	102.3	102.4	137.2	120.9	160.1	128.6	January 2016
ፀደቅ 2008	147.4	144.6	150.5	164.3	149.6	158.7	152.1	164.1	100.3	100.8	141.3	120.9	159.8	129.6	February "
መጋቢት 2008	148.3	146.2	150.6	163.0	152.4	157.7	153.5	167.2	99.9	100.5	140.9	120.9	159.9	129.0	March "
ግድለት 2008	150.5	148.0	153.3	158.5	151.3	164.6	153.4	170.4	101.8	102.3	142.4	121.0	164.7	130.3	April "
ግንቦት 2008	152.5	151.9	153.1	149.1	152.7	167.5	153.4	174.2	97.7	102.3	140.4	121.0	162.6	131.4	May "
ሰኔ 2008	154.0	153.8	154.2	148.0	152.7	169.2	154.1	173.7	102.2	102.6	142.1	121.0	165.0	130.9	June "
2009															2016/2017
ሐምሌ 2008	154.7	153.8	155.8	149.0	152.2	173.0	154.7	168.3	101.4	100.5	141.9	121.1	167.5	131.8	July 2016
ኦገስት 2008	155.5	156.0	154.9	144.7	151.2	172.3	154.9	166.8	101.6	100.5	142.9	121.1	167.6	131.4	August "
መስከረም 2009	158.6	161.5	155.4	145.3	153.3	170.9	155.1	169.6	102.2	100.6	146.9	121.1	170.9	132.0	September "
ጥቅምት 2009	157.1	157.8	156.3	150.7	152.0	172.0	156.0	174.3	102.7	100.6	148.4	121.1	170.5	131.2	October "
ህዳር 2009	156.0	154.5	157.7	156.3	153.4	173.2	157.1	174.3	102.6	100.9	151.1	121.1	170.5	132.3	November "
ታህሳስ 2009	155.7	153.2	158.5	160.0	153.8	172.2	158.5	177.4	103.7	100.9	153.5	121.1	172.8	133.8	December "
ጥር 2009	156.6	153.9	159.6	168.0	153.5	174.1	157.1	178.0	106.5	101.0	152.6	121.1	169.6	134.7	January 2017
ፀደቅ 2009	157.8	155.9	159.9	165.2	155.4	173.0	159.6	182.3	107.3	102.9	152.7	121.1	170.3	136.6	February "
መጋቢት 2009	160.9	160.2	161.6	167.0	159.1	174.2	161.2	184.5	109.0	102.8	153.6	121.1	172.6	136.8	March "

8.5 9.6 7.3 2.5 4.4 10.4 5.0 10.4 9.1 2.2 9.0 0.2 7.9 6.0

ሆንጠረዥ 30፣ ጠቅላላ የሽግግር ዋጋ መመዘኛ ኢንዱክስ በሥሩ የተከተቱ ክፍሎች ለአዲስ አበባ ከተማ አስተዳደር

ታህሳስ 2004 = 100

Table 3a: General Consumer Price Index and Its Components for Addis Ababa City Administration

December 2011 = 100

ወርና ዓመት	ጠቅላላ ኢንዱክስ	ምግብና አልኮል ያልሆኑ መጠባባቾች	ምግብ ነክ ያልሆኑ ኢንዱክስ	Non-food Consumer Price Index Components											Month an Year
				መጠጥ ሲጃራና ትምባህ	ልብና መጫጫያ	የቤት ኪራይ፣ የቤት መሥሪያ ስቃዎች+ውሃ፣ ነዳጅናሃይል	የቤት ስቃዎች የቤት ግብአቶች የቤት ቁሳቁስና የቤት ሠራተኛ ደመወዝ	ሕክምና	ትራንስፖርት	መገናኛ	መዝናኛና ባህል	ትምህርት	ሬስቶራንትና ሆቴሎች	ሌሎች ስቃዎች አገገሎቶች	
Month an Year	General Index	Food and Non-Alcoholic Beverages	Non-Food Index	Alcoholic Beverages and Tobacco	Clothing and Footwear	Housing, Water, Electricity, Gas and Other Fuels	Furnishings, Household Equipment and Routine Maintenance of the House	Health	Transport	Communication	Recreation and Culture	Education	Restaurants and Hotels	Misellaneous Goods and services	Month an Year
ታህሳስ 2004	100.0	100.0	100.0	100.0	100.0	100.0	100.0	100.0	100.0	100.0	100.0	100.0	100.0	100.0	December 2011
ሐምሌ 2004 - ሰኔ 2005	114.4	119.3	111.1	111.4	119.4	116.3	111.2	113.2	99.1	100.0	107.9	107.3	110.0	115.9	July 2012 - June 2013
ሐምሌ 2005 - ሰኔ 2006	124.2	124.9	123.7	129.0	131.6	129.8	123.2	118.9	104.8	100.0	124.5	111.9	139.6	125.7	July 2013 - June 2014
ሐምሌ 2006 - ሰኔ 2007	133.6	140.1	129.2	138.6	139.9	134.4	130.8	141.1	102.8	100.0	130.6	111.9	151.7	135.8	July 2014 - June 2015
ሐምሌ 2007 - ሰኔ 2008	147.3	163.4	136.7	144.1	149.3	141.0	142.9	150.7	96.8	100.0	133.3	142.9	166.1	148.0	July 2015 - June 2016
2008															2015/2016
ጥር 2008	145.7	157.7	137.7	144.4	149.0	140.4	144.6	153.2	97.9	100.0	132.2	149.1	171.1	147.2	January 2016
የካቲት 2008	143.3	151.6	137.7	145.0	149.4	141.2	148.4	152.0	95.4	100.0	133.1	149.1	168.0	150.9	February "
መጋቢት 2008	144.1	155.1	136.8	142.8	149.7	138.4	148.2	155.3	95.4	100.0	137.4	149.1	166.8	151.4	March "
ግብርን 2008	145.6	157.4	137.7	143.8	152.0	139.2	148.9	155.1	95.6	100.0	137.0	149.1	169.3	151.7	April "
ግንቦት 2008	148.7	164.5	138.2	146.1	152.6	140.7	149.0	153.7	95.4	100.0	137.2	149.1	168.0	152.3	May "
ሰኔ 2008	149.2	164.9	138.7	151.1	152.9	139.7	150.1	153.4	95.4	100.0	137.3	149.1	173.9	149.6	June "
2009															2016/2017
ሐምሌ 2008	152.1	170.1	140.2	154.5	153.5	142.3	152.4	155.7	95.4	100.0	139.5	149.1	175.2	151.3	July 2016
ኦገስት 2008	151.6	169.4	139.7	164.6	153.1	141.3	152.8	154.2	95.4	100.0	138.4	149.1	173.9	150.3	August "
መስከረም 2009	154.4	174.4	141.0	163.3	157.8	142.4	153.1	156.5	95.6	100.0	139.6	149.1	176.6	150.1	September "
ጥቅምት 2009	151.5	168.1	140.5	157.4	156.7	142.3	153.3	154.8	95.4	100.0	141.9	149.1	174.4	150.0	October "
ህዳር 2009	149.0	161.6	140.5	156.1	155.8	141.9	151.9	156.3	95.4	100.0	140.7	149.1	177.8	150.1	November "
ታህሳስ 2009	148.1	160.6	139.8	151.6	155.6	139.6	152.7	151.7	95.4	100.0	142.3	149.1	175.9	156.0	December "
ጥር 2009	149.1	159.0	142.6	159.5	157.0	143.7	154.2	159.2	99.8	100.0	140.7	149.1	178.1	156.8	January 2017
የካቲት 2009	149.0	157.3	143.4	156.6	156.2	145.3	155.7	161.1	102.8	100.0	141.6	149.1	175.6	160.0	February "
መጋቢት 2009	153.1	165.8	144.7	153.5	158.6	144.9	158.9	162.1	102.0	100.0	143.0	149.1	180.5	167.7	February "

ሠንጠረዥ 4ሀ፣ ጠቅላላ የሽግግር ዋጋ መመዘኛ ኢንዱስትሪ ቢሥሩ የተካተቱ ክፍሎች ለአፋር ክልላዊ መንግስት
 ታህሳስ 2004 =100

Table 4a: General Consumer Price Index and Its Components for Afar Regional State
 December 2011 = 100

ወርና ዓመት	ጠቅላላ ኢንዱስትሪ	ምግብና አልኮል ያልሆኑ መጠባቂያ	ምግብ ነክ ያልሆኑ ኢንዱስትሪ	Non-food Consumer Price Index Components											ወርና ዓመት
				መጠጥ ሲጃራና ትምባሆ	ልብስና መጫጫያ	የቤት ኪራይ፣ የቤት መሥሪያ ስቃዎች+ውሃ፣ ነጻጅናሃይል	የቤት ስቃዎች የቤት ግብአቶች	የቤት ቁሳቁስና የቤት ሠራተኛ ደመወዝ	ሕክምና	ትራንስፖርት	መገናኛ	መዝናኛና ባህል	ትምህርት	ሬስቶራንትና ሆቴሎች	
Month an Year	General Index	Food and Non-Food	Non-Food Index	Alcoholic Beverages and Tobacco	Clothing and Footwear	Housing, Water, and Utilities	Furnishings, Household Appliances	Health	Transport	Communication	Recreation and Culture	Education	Restaurants and Hotels	Miscellaneous Goods and Services	Month an Year
ታህሳስ 2004	100.0	100.0	100.0	100.0	100.0	100.0	100.0	100.0	100.0	100.0	100.0	100.0	100.0	100.0	December 2011
ሐምሌ 2004 - ሰኔ 2005	121.2	116.4	128.1	100.6	146.6	156.0	102.6	115.9	123.8	100.0	104.0	0.0	124.8	109.5	July 2012 - June 2013
ሐምሌ 2005 - ሰኔ 2006	134.3	124.7	148.1	105.5	175.6	185.9	115.3	154.6	145.7	100.0	117.2	0.0	141.3	122.4	July 2013 - June 2014
ሐምሌ 2006 - ሰኔ 2007	137.8	131.9	146.4	112.3	180.9	155.0	127.3	170.6	169.8	100.0	123.6	0.0	152.3	126.1	July 2014 - June 2015
ሐምሌ 2007 - ሰኔ 2008	163.6	150.4	182.5	151.1	189.2	240.5	152.4	185.4	174.9	100.0	137.5	0.0	174.8	130.0	July 2015 - June 2016
2008															2015/2016
ጥር 2008	160.9	147.3	180.3	163.2	179.5	228.6	154.8	195.1	186.0	100.0	138.1	0.0	172.7	132.4	January 2016
የካቲት 2008	166.6	146.6	195.4	180.5	181.8	274.7	157.4	190.6	175.7	100.0	138.6	0.0	176.2	128.5	February "
መጋቢት 2008	170.5	147.9	203.0	166.7	185.8	308.6	160.6	189.8	162.1	100.0	142.3	0.0	178.1	131.5	March "
ግንቦት 2008	175.2	154.4	205.1	172.5	188.4	309.5	162.5	186.6	175.7	100.0	139.7	0.0	179.9	126.4	April "
ግንቦት 2008	170.6	149.0	201.8	151.3	184.1	319.3	153.5	186.5	175.7	100.0	134.6	0.0	175.6	129.7	May "
ሰኔ 2008	174.2	147.6	212.5	153.4	210.0	331.4	161.2	188.3	175.7	100.0	150.2	0.0	183.3	127.7	June "
2009															2016/2017
ሐምሌ 2008	176.9	151.6	213.3	159.7	202.2	340.1	159.8	185.0	170.2	100.0	139.4	0.0	180.2	129.6	July 2016
ክለሌ 2008	175.6	152.6	208.6	140.1	186.9	344.8	161.8	173.1	175.7	100.0	140.8	0.0	183.1	130.2	August "
መስከረም 2009	177.8	157.3	207.2	166.2	188.6	322.1	159.9	166.3	175.7	100.0	139.3	0.0	185.1	130.5	September "
ጥቅምት 2009	176.5	158.3	202.6	173.4	183.6	303.8	160.0	168.0	170.2	100.0	138.8	0.0	185.7	130.9	October "
ህዳር 2009	173.5	154.4	200.8	165.6	192.9	291.0	163.4	164.8	186.0	100.0	133.4	0.0	186.3	133.4	November "
ታህሳስ 2009	171.4	147.9	205.1	159.2	196.9	310.8	157.9	152.6	181.4	100.0	140.8	0.0	190.3	134.3	December "
ጥር 2009	174.6	149.3	210.9	187.1	190.6	319.0	161.5	150.5	170.2	100.0	136.1	0.0	194.8	135.8	January 2017
የካቲት 2009	168.5	147.9	198.1	136.6	195.7	298.4	159.1	161.3	174.2	100.0	142.7	0.0	189.6	133.5	February "
መጋቢት 2009	177.9	148.9	219.7	147.2	193.4	373.9	160.9	184.9	175.7	100.0	146.9	0.0	191.5	132.3	February "

ሠንጠረዥ 50፤ ጠቅላላ የሽግግር ዋጋ መመዘኛ ኢንዱስትሪ ቢሥሩ የተካተቱ ክፍሎች ለአማራ ክልላዊ መንግስት
 ታህሳስ 2004 =100

Table 5a: General Consumer Price Index and Its Components for Amhara Regional State
 December 2011 = 100

ወርና ዓመት	ጠቅላላ ኢንዱስትሪ	ምግብና አልኮሎል ያልሆኑ መጠጦች	ምግብ ነጻ ያልሆኑ ኢንዱስትሪ	ምግብ ነጻ ያልሆኑ የኢንዱስትሪ ክፍሎች											Non-food Consumer Price Index Components	ወርና ዓመት
				መጠጥ ሲጃራና ትምባሆ	ልብና መጫጫያ	የቤት ኪራይ፣ የቤት መሥሪያ ስቃዎች+ውሃ፣ ነጻጅናሃይል	የቤት ስቃዎች የቤት ግብአቶች የቤት ቁሳቁስና የቤት ሠራተኛ ደመወዝ	ሕክምና	ትራንስፖርት	መገናኛ	መዝናኛና ባህል	ትምህርት	ሬስቶራንትና ሆቴሎች	ሌሎች ስቃዎች አገገሎቶች		
Month an Year	General Index	Food and Non-Alcoholic Beverages	Non-Food Index	Alcoholic Beverages and Tobacco	Clothing and Footwear	Housing, Water, Electricity, Gas and Other Fuels	Furnishings, Household Equipment and Routine Maintenance of the House	Health	Transport	Communication	Recreation and Culture	Education	Restaurants and Hotels	Misellaneous Goods and services	Month an Year	
ታህሳስ 2004	100.0	100.0	100.0	100.0	100.0	100.0	100.0	100.0	100.0	100.0	100.0	100.0	100.0	100.0	December 2011	
ሐምሌ 2004 - ሰኔ 2005	116.8	120.0	113.5	121.7	107.4	109.1	124.2	118.3	103.7	100.0	108.3	100.0	118.5	111.9	July 2012 - June 2013	
ሐምሌ 2005 - ሰኔ 2006	125.8	125.6	126.0	139.4	114.5	121.3	141.2	146.9	99.1	100.0	113.0	100.0	134.7	120.1	July 2013 - June 2014	
ሐምሌ 2006 - ሰኔ 2007	132.4	128.7	136.2	149.4	125.7	133.5	154.0	161.4	103.2	104.9	115.9	102.1	143.3	123.3	July 2014 - June 2015	
ሐምሌ 2007 - ሰኔ 2008	146.0	141.4	150.7	156.8	130.3	155.3	169.2	164.2	119.0	112.3	121.2	100.0	160.5	125.2	July 2015 - June 2016	
2008															2015/2016	
ጥር 2008	146.5	141.9	151.3	158.0	128.2	154.8	170.5	173.8	123.1	113.0	125.1	100.0	162.4	124.7	January 2016	
የካቲት 2008	147.6	141.2	154.2	163.5	130.5	161.4	171.9	168.0	113.5	113.0	126.7	100.0	162.7	126.4	February "	
መጋቢት 2008	146.1	140.5	151.9	157.8	130.3	155.8	173.4	175.1	112.3	113.0	124.9	100.0	162.9	125.7	March "	
ግድሃት 2008	148.9	142.5	155.6	156.1	130.0	161.4	173.3	181.5	123.1	113.0	127.5	100.0	169.7	127.7	April "	
ግንቦት 2008	151.3	146.1	156.8	163.0	132.1	164.9	175.0	165.3	123.1	113.0	117.8	100.0	166.5	127.2	May "	
ሰኔ 2008	151.6	144.9	158.5	158.2	131.2	171.3	174.0	155.0	123.1	115.0	122.1	100.0	168.5	126.0	June "	
2009															2016/2017	
ሐምሌ 2008	154.7	146.7	163.1	156.6	129.0	181.7	174.7	162.9	127.3	113.0	125.1	100.0	173.9	128.6	July 2016	
ኦገስት 2008	157.1	152.0	162.3	158.0	129.3	178.2	178.1	152.3	123.9	113.0	126.2	100.0	174.7	128.0	August "	
መስከረም 2009	163.2	163.0	163.5	154.0	127.8	181.2	179.0	156.3	123.9	113.0	131.1	100.0	177.1	129.7	September "	
ጥቅምት 2009	162.2	160.4	164.1	156.4	127.7	180.9	179.9	177.6	124.2	113.0	119.2	100.0	178.0	128.7	October "	
ህዳር 2009	160.5	154.1	167.3	161.9	126.0	188.1	180.9	175.3	123.6	115.0	135.8	100.0	178.9	130.7	November "	
ታህሳስ 2009	158.9	151.9	166.2	160.9	126.9	186.1	181.2	177.1	120.8	115.0	130.6	100.0	176.6	133.5	December "	
ጥር 2009	158.7	154.5	163.1	157.1	127.7	179.2	181.5	181.9	131.1	115.0	132.3	100.0	171.7	133.5	January 2017	
የካቲት 2009	159.0	154.8	163.4	158.2	127.8	178.1	183.9	178.4	123.9	115.0	128.6	100.0	174.4	135.6	February "	
መጋቢት 2009	163.1	160.7	165.7	160.2	135.5	181.4	186.1	180.9	123.9	115.0	131.2	100.0	173.4	133.5	February "	

ሠንጠረዥ 60፣ ጠቅላላ የሽግግር ዋጋ መመዘኛ ኢንዱስትሪ ቢሥሩ የተካተቱ ክፍሎች ለበኒሻንጉል ጉሙዝ ክልላዊ መንግስት
 ታህሳስ 2004 =100

Table 6a: General Consumer Price Index and Its Components for Benishangul-Gumuz Regional State
 December 2011 = 100

ወርና ዓመት	ጠቅላላ ኢንዱስትሪ	ምግብና አልኮል ያልሆኑ ምግብ መጠባባሪያ	ምግብ ነፃ ያልሆኑ ኢንዱስትሪ	Non-food Consumer Price Index Components											ወርና ዓመት
				መጠጥ ሲጃራና ትምባሆ	ልብና መጫጫያ	የቤት ኪራይ፣ የቤት መሥሪያ ስቃዎች+ውሃ፣ ነጻድናሃይል	የቤት ስቃዎች የቤት ግብአቶች የቤት ቁሳቁስና የቤት ሠራተኛ ደመወዝ	ሕክምና	ትራንስፖርት	መገናኛ	መዝናኛና ባህል	ትምህርት	ሬስቶራንትና ሆቴሎች	ሌሎች ስቃዎች አገገሎቶች	
Month an Year	General Index	Food and Non-Food	Non-Food Index	Alcoholic Beverages and Tobacco	Clothing and Footwear	Housing, Water, Electricity and Fuels	Furnishings, Household Appliances	Health	Transport	Communication	Recreation and Culture	Education	Restaurants and Hotels	Miscellaneous Goods and Services	Month an Year
ታህሳስ 2004	100.0	100.0	100.0	100.0	100.0	100.0	100.0	100.0	100.0	100.0	100.0	100.0	100.0	100.0	December 2011
ሐምሌ 2004 - ሰኔ 2005	113.2	107.5	121.9	138.3	118.3	140.8	113.3	110.7	105.8	100.0	106.0	0.0	110.6	110.4	July 2012 - June 2013
ሐምሌ 2005 - ሰኔ 2006	123.5	114.9	136.4	167.7	130.4	165.0	119.0	136.3	107.2	100.0	109.8	0.0	121.1	115.8	July 2013 - June 2014
ሐምሌ 2006 - ሰኔ 2007	123.4	114.0	137.6	175.7	144.5	151.2	127.9	131.0	106.5	100.0	111.5	0.0	127.8	116.2	July 2014 - June 2015
ሐምሌ 2007 - ሰኔ 2008	134.1	127.5	144.0	181.5	152.2	156.3	140.2	157.0	106.5	100.0	115.1	0.0	130.6	120.1	July 2015 - June 2016
2007															2014/2015
2008															2015/2016
ጥር 2008	134.9	127.2	146.5	174.8	152.9	167.2	139.6	137.8	117.2	100.0	116.0	0.0	130.2	119.6	January 2016
የካቲት 2008	133.0	124.3	146.1	191.9	152.8	158.4	145.0	135.4	106.3	100.0	116.5	0.0	134.1	120.8	February "
መጋቢት 2008	130.9	121.1	145.7	196.0	152.4	153.0	142.8	170.1	104.7	100.0	116.3	0.0	134.9	120.3	March "
ግንቦት 2008	131.9	122.8	145.5	205.4	152.5	150.0	143.8	171.9	104.8	100.0	116.6	0.0	131.5	122.1	April "
ግንቦት 2008	134.0	126.5	145.3	182.3	153.5	150.7	144.2	206.3	104.9	100.0	115.8	0.0	130.5	127.8	May "
ሰኔ 2008	135.0	128.3	145.0	176.6	152.8	147.1	144.7	238.1	105.2	100.0	118.5	0.0	133.8	120.9	June "
2009															2016/2017
ሐምሌ 2008	135.6	128.0	147.0	175.0	149.9	156.8	141.1	232.7	105.4	100.0	119.3	0.0	136.6	123.8	July 2016
ክለሴ 2008	138.3	131.7	148.3	173.1	150.5	167.4	139.6	222.8	105.4	100.0	119.3	0.0	131.9	120.3	August "
መስከረም 2009	139.6	134.5	147.1	173.3	150.8	159.0	141.2	230.5	105.6	100.0	119.9	0.0	133.7	124.7	September "
ጥቅምት 2009	137.3	132.9	143.9	171.8	150.1	152.7	141.6	169.6	116.8	100.0	121.3	0.0	131.9	125.9	October "
ህዳር 2009	138.6	131.2	149.7	186.2	151.7	168.4	142.2	146.6	116.9	100.0	120.9	0.0	137.2	125.6	November "
ታህሳስ 2009	138.3	131.2	149.0	202.7	150.4	162.9	142.8	152.6	105.9	100.0	121.1	0.0	139.7	121.9	December "
ጥር 2009	138.7	132.2	148.5	211.6	153.2	155.5	141.7	169.3	106.2	100.0	120.6	0.0	139.2	122.2	January 2017
የካቲት 2009	140.1	131.8	152.6	192.7	150.9	176.0	143.5	141.2	119.0	100.0	121.1	0.0	139.0	127.1	February "
መጋቢት 2009	142.1	134.0	154.2	190.8	152.8	182.6	147.5	141.3	108.4	100.0	120.7	0.0	137.8	126.8	February "

ሠንጠረዥ 7ሀ፣ ጠቅላላ የሽግግር ዋጋ መመዘኛ ኢንዱክስ በሥሩ የተካተቱ ክፍሎች ስድራላዋ ከተማ አስተዳደር
 ታህሳስ 2004 =100

Table 7a: General Consumer Price Index and Its Components for Dire Dawa City Administration
 December 2011 = 100

ወርና ዓመት	ጠቅላላ ኢንዱክስ	ምግብና አልኮል ያልሆኑ መጠባባቂ	ምግብ ነክ ያልሆኑ ኢንዱክስ	Non-food Consumer Price Index Components											ወርና ዓመት
				መጠጥ ሲጃራና ትምባሆ	ላብስና መጫጫያ	የቤት ኪራይ፣ የቤት መሥሪያ ስቃዎች+ውሃ፣ ነዳጅናሃይል	የቤት ስቃዎች የቤት ግብአቶች የቤት ቁሳቁስና የቤት ሠራተኛ ደመወዝ	ሕክምና	ትራንስፖርት	መገናኛ	መዝናኛና ባህል	ትምህርት	ሬስቶራንትና ሆቴሎች	ሌሎች ስቃዎች አገገሎቶች	
Month an Year	General Index	Food and Non-Food	Non-Food Index	Alcoholic Beverages and Tobacco	Clothing and Footwear	Housing, Water, and Utilities	Furnishings, Household Appliances	Health	Transport	Communication	Recreation and Culture	Education	Restaurants and Hotels	Miscellaneous Goods and Services	Month an Year
ታህሳስ 2004	100.0	100.0	100.0	100.0	100.0	100.0	100.0	100.0	100.0	100.0	100.0	100.0	100.0	100.0	December 2011
ሐምሌ 2004 - ሰኔ 2005	113.3	111.8	114.5	91.3	131.1	123.3	110.3	105.7	117.4	100.0	103.6	100.0	139.1	108.7	July 2012 - June 2013
ሐምሌ 2005 - ሰኔ 2006	132.5	119.7	142.9	122.9	154.0	177.2	123.1	116.5	120.1	100.0	113.1	100.0	155.4	122.3	July 2013 - June 2014
ሐምሌ 2006 - ሰኔ 2007	147.0	129.2	161.7	181.0	165.0	182.0	135.7	122.7	121.8	100.0	123.9	100.0	158.4	138.3	July 2014 - June 2015
ሐምሌ 2007 - ሰኔ 2008	158.1	134.1	177.7	211.5	189.5	185.5	147.9	121.9	117.2	100.0	130.9	100.0	189.3	151.8	July 2015 - June 2016
2008															2015/2016
ጥር 2008	163.1	134.8	186.2	243.8	191.9	186.9	141.1	122.0	115.6	100.0	130.9	100.0	192.9	159.6	January 2016
ፀደቅ 2008	167.4	132.1	196.4	290.3	188.9	183.6	149.3	122.0	115.6	100.0	130.9	100.0	194.4	151.0	February "
መጋቢት 2008	159.9	133.3	181.7	225.2	192.7	184.4	149.3	123.6	122.5	100.0	130.9	100.0	189.0	157.7	March "
ግንቦት 2008	165.2	135.5	189.5	259.3	191.5	180.6	153.3	122.1	115.6	100.0	130.9	100.0	197.1	156.9	April "
ግንቦት 2008	165.5	145.9	181.6	212.2	198.7	187.5	153.3	125.0	115.6	100.0	130.9	100.0	200.2	160.2	May "
ሰኔ 2008	161.0	141.7	176.8	191.3	194.6	184.0	152.5	125.0	122.5	100.0	130.9	100.0	210.2	159.7	June "
2009															2016/2017
ሐምሌ 2008	159.6	141.7	174.2	178.0	194.5	186.1	152.9	122.1	122.5	100.0	130.9	100.0	207.9	164.1	July 2016
ኦገስት 2008	162.9	145.3	177.3	194.5	191.2	189.1	146.6	123.5	122.5	100.0	130.9	100.0	202.5	162.8	August "
መስከረም 2009	162.5	149.3	173.3	175.9	196.6	185.7	149.4	125.1	122.5	100.0	130.9	100.0	206.0	164.1	September "
ጥቅምት 2009	168.7	148.9	184.9	214.1	206.2	185.9	155.4	121.4	122.5	100.0	130.9	100.0	212.6	170.3	October "
ህዳር 2009	167.3	146.2	184.5	207.7	205.6	190.8	152.1	123.5	122.5	100.0	130.9	100.0	214.1	167.4	November "
ታህሳስ 2009	168.6	144.3	188.5	227.3	203.3	193.2	154.0	125.1	122.5	100.0	133.7	100.0	204.3	167.3	December "
ጥር 2009	172.5	141.6	197.8	256.9	208.9	198.5	158.4	120.5	122.5	100.0	134.1	100.0	202.6	170.3	January 2017
ፀደቅ 2009	172.9	140.3	199.7	276.5	211.4	187.0	154.8	122.0	125.2	100.0	136.2	100.0	203.5	172.8	February "
መጋቢት 2009	180.3	149.5	205.6	289.4	210.8	193.7	160.4	122.0	125.2	100.0	136.2	100.0	209.1	172.0	February "

ሠንጠረዥ 801፣ ጠቅላላ የሽግግር ዋጋ መመዘኛ ኢንዱስትሪ ቢሥሩ የተካተቱ ክፍሎች ለጋምቤላ ክልል መገንባት
 ታህሳስ 2004 =100

Table 8a: General Consumer Price Index and Its Components for Gambella Regional State
 December 2011 = 100

ወርና ዓመት	ጠቅላላ ኢንዱስትሪ	ምግብና አልኮሎል ያልሆኑ መጠጦች	ምግብ ነክ ያልሆኑ ኢንዱስትሪ	Non-food Consumer Price Index Components											Month an Year
				መጠጥ ሲጃራና ትምባሆ	ልብና መጫጫያ	የቤት ኪራይ፣ የቤት መሥሪያ ስቃዎች+ውሃ፣ ነጻጅናሃይል	የቤት ስቃዎች የቤት ግብአቶች የቤት ቁሳቁስና የቤት ሠራተኛ ደመወዝ	ሕክምና	ትራንስፖርት	መገናኛ	መዝናኛና ባህል	ትምህርት	ሬስቶራንትና ሆቴሎች	ሌሎች ስቃዎች አገገሎቶች	
Month an Year	General Index	Food and Non-Alcoholic Beverages	Non-Food Index	Alcoholic Beverages and Tobacco	Clothing and Footwear	Housing, Water, Electricity, Gas and Other Fuels	Furnishings, Household Equipment and Routine Maintenance of the House	Health	Transport	Communication	Recreation and Culture	Education	Restaurants and Hotels	Misellaneous Goods and services	Month an Year
ታህሳስ 2004	100.0	100.0	100.0	100.0	100.0	100.0	100.0	100.0	100.0	100.0	100.0	100.0	100.0	100.0	December 2011
ሐምሌ 2004 - ሰኔ 2005	114.9	114.8	115.1	112.9	130.3	105.7	117.9	116.8	113.4	100.0	114.5	0.0	122.0	126.6	July 2012 - June 2013
ሐምሌ 2005 - ሰኔ 2006	125.4	124.2	127.4	115.9	151.0	119.9	130.4	139.7	116.6	100.0	134.3	0.0	131.6	146.8	July 2013 - June 2014
ሐምሌ 2006 - ሰኔ 2007	130.2	129.9	130.6	122.3	153.9	120.1	132.0	154.9	122.6	100.0	137.2	0.0	139.1	149.2	July 2014 - June 2015
ሐምሌ 2007 - ሰኔ 2008	141.5	142.9	139.0	137.4	171.7	118.0	140.9	169.1	134.7	100.0	145.3	0.0	157.3	157.3	July 2015 - June 2016
2008															2015/2016
ጥር 2008	139.0	137.8	140.9	128.4	180.7	122.3	142.7	175.8	142.3	100.0	144.3	0.0	161.1	153.0	January 2016
የካቲት 2008	140.8	140.5	141.3	132.2	167.9	121.5	142.2	164.4	168.6	100.0	146.6	0.0	160.4	153.3	February "
መጋቢት 2008	139.1	140.4	136.8	131.7	162.0	115.4	143.1	170.2	126.0	100.0	146.6	0.0	166.4	148.2	March "
ግድም 2008	141.5	142.8	139.2	132.3	174.7	112.9	145.6	173.2	142.8	100.0	146.6	0.0	163.8	155.5	April "
ግንቦት 2008	144.5	148.1	138.5	138.0	167.9	112.5	146.2	180.3	126.4	100.0	147.3	0.0	162.9	155.5	May "
ሰኔ 2008	147.0	150.1	141.8	145.1	173.4	118.1	148.3	178.1	126.7	100.0	151.1	0.0	162.1	153.6	June "
2009															2016/2017
ሐምሌ 2008	147.7	151.7	141.1	134.3	182.9	116.2	148.9	181.4	126.7	100.0	149.8	0.0	163.6	154.3	July 2016
ኦገስት 2008	145.5	148.3	140.7	135.6	184.3	111.5	147.4	164.1	143.7	100.0	150.3	0.0	168.6	153.1	August "
መስከረም 2009	148.6	154.9	138.1	135.6	170.6	109.0	138.5	199.2	143.9	100.0	150.3	0.0	166.5	156.6	September "
ጥቅምት 2009	147.9	151.5	142.0	135.8	175.5	117.6	146.3	179.0	144.0	100.0	149.4	0.0	169.2	154.7	October "
ህዳር 2009	145.5	146.1	144.5	153.1	183.6	112.7	145.8	190.0	144.2	100.0	163.0	0.0	169.0	158.1	November "
ታህሳስ 2009	147.4	150.0	143.1	124.1	184.9	113.4	148.8	201.5	144.6	100.0	162.1	0.0	176.2	167.7	December "
ጥር 2009	146.7	150.1	141.0	129.3	188.3	112.4	140.8	190.1	144.7	100.0	153.5	0.0	173.0	159.4	January 2017
የካቲት 2009	145.2	150.2	136.9	112.9	178.3	110.3	142.9	172.4	144.7	100.0	161.1	0.0	167.9	159.5	February "
መጋቢት 2009	147.9	153.1	139.3	121.6	177.0	116.6	141.1	205.7	144.7	55.0	150.0	0.0	175.7	157.9	February "

ሠንጠረዥ 9ሀ፤ ጠቅላላ የሽግግር ዋጋ መመዘኛ ኢንዱስትሪ ቢሥሩ የተካተቱ ክፍሎች ስራሪ ክልላዊ መገንባት

ታህሳስ 2004 =100

Table 9a: General Consumer Price Index and Its Components for Harari Regional State

December 2011 = 100

ወርና ዓመት	ጠቅላላ ኢንዱስትሪ	ምግብና አልኮሎል ያልሆኑ መጠጦች	ምግብ ነክ ያልሆኑ ኢንዱስትሪ	ምግብ ነክ ያልሆኑ የኢንዱስትሪ ክፍሎች											Non-food Consumer Price Index Components	ወርና ዓመት
				መጠጥ ሲጃራና ትምባሆ	ልብና መጫጫያ	የቤት ኪራይ፣ የቤት መሥሪያ ስቃዎች+ውሃ፣ ነጻጅናሃይል	የቤት ስቃዎች የቤት ግብዓቶች የቤት ቁሳቁስና የቤት ሠራተኛ ደመወዝ	ሕክምና	ትራንስፖርት	መገናኛ	መዝናኛና ባህል	ትምህርት	ሬስቶራንትና ሆቴሎች	ሌሎች ስቃዎች አገገሎቶች		
Month an Year	General Index	Food and Non-Alcoholic Beverages	Non-Food Index	Alcoholic Beverages and Tobacco	Clothing and Footwear	Housing, Water, Electricity, Gas and Other Fuels	Furnishings, Household Equipment and Routine Maintenance of the House	Health	Transport	Communication	Recreation and Culture	Education	Restaurants and Hotels	Misellaneous Goods and services	Month an Year	
ታህሳስ 2004	100.0	100.0	100.0	100.0	100.0	100.0	100.0	100.0	100.0	100.0	100.0	100.0	100.0	100.0	December 2011	
ሐምሌ 2004 - ሰኔ 2005	111.0	119.0	103.6	97.7	117.6	100.0	112.9	120.3	108.6	100.0	99.7	100.0	120.2	112.2	July 2012 - June 2013	
ሐምሌ 2005 - ሰኔ 2006	122.8	131.5	114.8	112.1	131.5	109.7	127.6	105.0	107.3	100.0	116.4	100.0	135.4	121.0	July 2013 - June 2014	
ሐምሌ 2006 - ሰኔ 2007	132.6	145.6	120.7	122.1	140.6	111.8	135.5	91.4	107.1	100.0	114.1	100.0	143.8	127.6	July 2014 - June 2015	
ሐምሌ 2007 - ሰኔ 2008	147.1	156.5	138.5	172.2	150.3	104.4	153.5	107.1	107.1	100.0	151.5	100.0	152.7	140.5	July 2015 - June 2016	
2008															2015/2016	
ጥር 2008	162.6	157.6	167.2	253.2	144.8	107.6	153.9	125.3	107.1	100.0	181.0	100.0	149.4	166.5	January 2016	
የካቲት 2008	162.4	155.5	168.8	266.2	152.9	99.9	157.4	114.7	107.1	100.0	187.4	100.0	148.5	137.7	February "	
መጋቢት 2008	167.4	154.1	179.6	295.7	156.3	99.9	158.1	140.2	107.1	100.0	187.4	100.0	153.5	140.0	March "	
ግድም 2008	148.2	158.7	138.7	174.8	150.9	99.9	159.1	105.4	107.1	100.0	187.4	100.0	150.8	143.6	April "	
ግንቦት 2008	145.2	165.4	126.7	138.1	152.9	99.9	160.6	105.4	107.1	100.0	189.5	100.0	153.1	137.3	May "	
ሰኔ 2008	154.9	166.5	144.2	190.0	155.7	99.9	157.6	105.4	107.1	100.0	189.5	100.0	154.5	142.1	June "	
2009															2016/2017	
ሐምሌ 2008	150.6	167.2	135.4	160.6	161.3	99.9	158.7	147.6	107.1	100.0	189.4	100.0	152.4	141.1	July 2016	
ኔሐሴ 2008	149.9	169.8	131.7	150.4	162.7	99.8	155.9	105.4	107.1	100.0	188.1	100.0	158.5	140.2	August "	
መስከረም 2009	155.8	178.5	134.9	160.3	158.5	99.8	158.2	115.5	107.1	100.0	189.4	100.0	159.2	141.9	September "	
ጥቅምት 2009	146.0	169.6	124.4	128.9	157.2	99.6	159.9	119.0	107.1	100.0	189.4	100.0	155.5	143.8	October "	
ህዳር 2009	153.0	169.9	137.4	164.3	179.0	99.8	157.2	105.4	107.1	100.0	186.7	100.0	148.9	143.1	November "	
ታህሳስ 2009	155.5	168.0	144.0	186.2	162.4	99.8	161.6	105.4	107.1	100.0	189.5	100.0	157.9	142.3	December "	
ጥር 2009	157.4	160.7	154.3	212.4	165.4	105.4	161.1	119.0	107.1	100.0	188.2	100.0	147.8	142.3	January 2017	
የካቲት 2009	163.7	163.5	163.9	238.6	156.6	110.0	161.0	107.1	107.1	100.0	190.9	100.0	152.7	144.6	February "	
መጋቢት 2009	169.3	173.2	165.8	230.1	159.5	117.9	162.9	105.4	107.1	100.0	190.9	100.0	186.5	145.0	February "	

ሠንጠረዥ 10ሀ፣ ጠቅላላ የሽግግር ዋጋ መመዘኛ ኢንዱክሽን ቢሥሩ የተካተቱ ክፍሎች ለአርጌያ ክልላዊ መንግስት
 ታህሳስ 2004 =100

Table 10a: General Consumer Price Index and Its Components for Oromia Regional State
 December 2011 = 100

ወርና ዓመት	ጠቅላላ ኢንዱክሽን	ምግብና አልኮሎል ያልሆኑ መጠባባቂ	ምግብ ነክ ያልሆኑ ኢንዱክሽን	ምግብ ነክ ያልሆኑ የኢንዱክሽን ክፍሎች											Month an Year
				Non-food Consumer Price Index Components											
Month an Year	General Index	Food and Non-Alcoholic Beverages	Non-Food Index	Alcoholic Beverages and Tobacco	Clothing and Footwear	Housing, Water, Electricity, Gas and Other Fuels	Furnishings, Household Equipment and Routine Maintenance of the House	Health	Transport	Communication	Recreation and Culture	Education	Restaurants and Hotels	Misellaneous Goods and services	Month an Year
ታህሳስ 2004	100.0	100.0	100.0	100.0	100.0	100.0	100.0	100.0	100.0	100.0	100.0	100.0	100.0	100.0	December 2011
ሐምሌ 2004 - ሰኔ 2005	114.4	115.6	113.1	102.3	113.9	117.1	115.9	115.9	97.3	100.0	103.9	100.0	122.5	112.5	July 2012 - June 2013
ሐምሌ 2005 - ሰኔ 2006	123.4	123.3	123.5	114.9	129.3	127.8	126.1	132.4	95.0	100.0	109.9	100.0	134.0	117.9	July 2013 - June 2014
ሐምሌ 2006 - ሰኔ 2007	138.1	139.5	136.6	139.5	144.3	144.5	136.8	140.5	95.3	100.0	101.7	100.0	142.4	121.9	July 2014 - June 2015
ሐምሌ 2007 - ሰኔ 2008	153.1	158.1	147.5	146.0	154.5	158.2	148.1	158.8	93.3	100.0	133.4	100.0	158.5	128.1	July 2015 - June 2016
2008															2015/2016
ጥር 2008	150.2	153.4	146.6	152.1	154.0	152.0	149.6	162.5	94.6	100.0	132.5	100.0	160.3	128.7	January 2016
ፍቅር 2008	151.0	152.9	148.9	152.3	153.7	158.3	151.9	159.7	94.0	100.0	137.4	100.0	159.9	129.4	February "
መጋቢት 2008	153.7	155.7	151.5	161.0	159.2	160.8	152.5	157.4	93.8	100.0	139.7	100.0	160.1	128.2	March "
ግንቦት 2008	154.6	156.4	152.5	154.2	155.9	165.2	152.6	163.7	94.3	100.0	142.3	100.0	164.7	129.9	April "
ግንቦት 2008	153.6	156.9	149.8	128.2	157.4	166.9	151.1	172.1	85.3	100.0	141.2	100.0	162.2	132.4	May "
ሰኔ 2008	155.3	158.4	151.7	129.8	157.6	169.4	152.6	165.2	94.2	100.0	141.4	100.0	167.1	130.7	June "
2009															2016/2017
ሐምሌ 2008	155.9	159.9	151.3	137.3	156.1	166.5	153.0	159.0	93.9	100.0	139.4	100.0	167.9	132.7	July 2016
ኔሐሴ 2008	155.1	159.0	150.7	122.7	153.4	170.7	153.0	159.3	93.7	100.0	142.7	100.0	167.1	132.7	August "
መስከረም 2009	158.1	163.0	152.6	127.4	157.8	171.0	153.3	165.2	94.2	100.0	145.6	100.0	171.3	132.0	September "
ጥቅምት 2009	155.7	159.1	151.9	136.5	155.6	166.5	153.3	168.8	94.6	100.0	149.9	100.0	171.6	130.8	October "
ህዳር 2009	155.1	155.6	154.5	147.1	159.0	170.0	152.7	166.9	94.1	100.0	147.6	100.0	169.6	131.9	November "
ታህሳስ 2009	153.5	153.2	153.8	151.1	157.3	165.3	153.4	170.2	95.0	100.0	148.4	100.0	174.6	132.5	December "
ጥር 2009	156.9	156.0	158.0	164.5	158.1	173.8	151.1	171.9	95.1	100.0	147.3	100.0	172.9	134.7	January 2017
ፍቅር 2009	156.3	153.7	159.3	154.1	161.3	177.0	154.8	180.7	95.6	100.0	150.0	100.0	173.4	135.8	February "
መጋቢት 2009	159.2	157.1	161.7	152.4	165.0	182.1	155.3	176.4	96.2	100.0	148.4	100.0	176.9	136.7	February "

ሠንጠረዥ 110፣ ጠቅላላ የሽግግር ዋጋ መመዘኛ ኢንዱክሽን ቢሥሩ የተካተቱ ክፍሎች ለደቡብ ህዝቦች ክልላዊ መገንባት ታህሳስ 2004 =100

Table 11a: General Consumer Price Index and Its Components for SNNP Regional State
December 2011 = 100

ወርና ዓመት	ጠቅላላ ኢንዱክሽን	ምግብና አልኮሎል ያልሆኑ መጠባባቾች	ምግብ ነክ ያልሆኑ ኢንዱክሽን	Non-food Consumer Price Index Components											Month an Year
				መጠጥ ሲጃራና ትምባህ	ልብና መጫጫያ	የቤት ኪራይ፣ የቤት መሥሪያ ስቃዎች+ውሃ፣ ነዳጅናሃይል	የቤት ስቃዎች የቤት ግብአቶች የቤት ቁሳቁስና የቤት ሠራተኛ ደመወዝ	ሕክምና	ትራንስፖርት	መገናኛ	መዝናኛና ባህል	ትምህርት	ሬስቶራንትና ሆቴሎች	ሌሎች ስቃዎች አገገሎቶች	
Month an Year	General Index	Food and Non-Alcoholic Beverages	Non-Food Index	Alcoholic Beverages and Tobacco	Clothing and Footwear	Housing, Water, Electricity, Gas and Other Fuels	Furnishings, Household Equipment and Routine Maintenance of the House	Health	Transport	Communication	Recreation and Culture	Education	Restaurants and Hotels	Misellaneous Goods and services	Month an Year
ታህሳስ 2004	100.0	100.0	100.0	100.0	100.0	100.0	100.0	100.0	100.0	100.0	100.0	100.0	100.0	100.0	December 2011
ሐምሌ 2004 - ሰኔ 2005	120.6	123.2	118.6	117.0	121.3	121.4	114.8	145.2	102.4	100.2	119.2	100.2	119.3	107.7	July 2012 - June 2013
ሐምሌ 2005 - ሰኔ 2006	132.2	131.8	132.5	128.6	135.0	139.9	123.7	161.3	108.1	100.0	126.3	101.0	129.8	114.9	July 2013 - June 2014
ሐምሌ 2006 - ሰኔ 2007	137.7	139.1	136.7	140.4	146.5	139.2	131.5	176.2	101.4	100.1	137.1	101.0	136.0	118.3	July 2014 - June 2015
ሐምሌ 2007 - ሰኔ 2008	146.5	152.1	142.4	149.5	153.0	142.5	140.3	189.4	102.0	98.6	148.5	101.0	149.7	121.7	July 2015 - June 2016
2008															2015/2016
ጥር 2008	148.5	152.9	145.2	152.2	155.6	146.9	141.4	190.3	100.8	100.0	147.8	101.0	149.7	122.6	January 2016
የካቲት 2008	144.5	148.1	141.7	149.7	153.9	140.6	141.4	186.7	102.7	89.9	148.6	101.0	149.4	123.5	February "
መጋቢት 2008	146.2	151.5	142.3	151.0	154.8	140.6	142.0	195.6	103.5	88.2	148.5	101.0	151.1	121.9	March "
ግድሃም 2008	149.3	153.8	146.0	151.5	154.0	148.1	143.4	191.7	102.8	100.0	149.1	101.0	153.6	122.4	April "
ግንቦት 2008	152.4	158.3	148.0	153.7	155.5	151.4	144.4	197.3	103.1	100.0	151.5	101.0	150.4	122.2	May "
ሰኔ 2008	154.9	163.8	148.3	154.1	154.6	150.1	144.4	211.5	109.2	100.0	148.1	101.0	157.3	123.5	June "
2009															2016/2017
ሐምሌ 2008	153.7	158.7	150.1	149.3	156.7	157.0	144.1	199.4	98.3	88.2	151.4	101.0	157.4	122.1	July 2016
ኔሐሴ 2008	155.3	160.4	151.5	160.1	156.5	156.5	143.8	200.2	104.2	88.2	150.2	101.0	157.9	124.4	August "
መስከረም 2009	153.8	163.4	146.7	159.7	158.4	145.1	143.8	193.8	108.7	89.0	155.2	101.0	157.3	123.8	September "
ጥቅምት 2009	154.9	161.5	150.1	161.7	157.1	151.1	146.7	200.8	110.5	89.0	157.5	101.0	159.2	123.7	October "
ህዳር 2009	151.9	161.5	144.7	156.3	156.3	140.5	147.1	203.2	110.5	89.0	153.8	101.0	158.6	123.5	November "
ታህሳስ 2009	155.4	164.8	148.5	161.0	162.9	144.3	144.3	213.8	121.6	89.0	155.3	101.0	163.4	124.8	December "
ጥር 2009	154.8	164.6	147.4	167.2	160.6	139.6	149.0	208.9	124.1	89.0	155.0	101.0	163.1	126.2	January 2017
የካቲት 2009	159.8	174.4	148.9	168.6	162.3	141.2	147.6	209.6	130.0	102.7	154.1	101.0	163.8	126.9	February "
መጋቢት 2009	163.3	178.4	152.1	177.5	164.9	141.9	151.4	222.0	143.7	102.7	156.8	101.0	168.3	126.3	February "

ሠንጠረዥ 12ሀ፣ ጠቅላላ የሽግግር ዋጋ መመዘኛ ኢንዱስትሪ ቢሥሩ የተካተቱ ክፍሎች ለሱማሌ ክልላዊ መንግስት
 ታህሳስ 2004 =100

Table 12a: General Consumer Price Index and Its Components for Somali Regional State
 December 2011 = 100

ወርና ዓመት	ጠቅላላ ኢንዱስትሪ	ምግብና አልኮሎል ያልሆኑ መጠባበቅ	ምግብ ነክ ያልሆኑ ኢንዱስትሪ	ምግብ ነክ ያልሆኑ የኢንዱስትሪ ክፍሎች											ወርና ዓመት
				መጠጥ ሲጃራና ትምባሆ	ልብና መጫጫያ	የቤት ኪራይ፣ የቤት መሥሪያ ስቃዎች+ውሃ፣ ነጻጅናሃይል	የቤት ስቃዎች የቤት ግብአቶች	የቤት ቁሳቁስና የቤት ሠራተኛ ደመወዝ	ሕክምና	ትራንስፖርት	መገናኛ	መዝናኛና ባህል	ትምህርት	ሬስቶራንትና ሆቴሎች	
Month an Year	General Index	Food and Non-Alcoholic Beverages	Non-Food Index	Alcoholic Beverages and Tobacco	Clothing and Footwear	Housing, Water, Electricity, Gas and Other Fuels	Furnishings, Household Equipment and Routine Maintenance of the House	Health	Transport	Communication	Recreation and Culture	Education	Restaurants and Hotels	Misellaneous Goods and services	Month an Year
ታህሳስ 2004	100.0	100.0	100.0	100.0	100.0	100.0	100.0	100.0	100.0	100.0	100.0	100.0	100.0	100.0	December 2011
ሐምሌ 2004 - ሰኔ 2005	116.5	115.5	117.7	100.2	121.5	129.0	126.2	121.0	108.5	100.0	134.6	100.0	112.4	121.5	July 2012 - June 2013
ሐምሌ 2005 - ሰኔ 2006	129.4	123.0	137.5	138.5	123.3	152.6	131.4	140.2	122.8	100.0	148.0	100.0	123.1	135.4	July 2013 - June 2014
ሐምሌ 2007 - ሰኔ 2008	152.8	137.3	172.2	208.2	144.1	190.7	134.1	186.0	124.6	100.0	164.6	100.0	134.2	156.0	July 2015 - June 2016
2008															2015/2016
ጥር 2008	151.0	137.7	167.7	212.8	146.9	171.8	132.7	179.4	126.0	100.0	164.0	100.0	135.1	157.6	January 2016
የካቲት 2008	159.8	140.4	184.4	259.8	143.8	190.0	131.3	174.8	126.0	100.0	164.0	100.0	134.3	153.2	February "
መጋቢት 2008	154.5	141.2	171.1	212.9	146.1	183.1	132.1	191.1	126.0	100.0	160.1	100.0	133.9	157.2	March "
ግድሃም 2008	153.3	139.9	170.2	208.3	147.4	179.6	140.2	182.0	126.0	100.0	160.1	100.0	137.0	158.0	April "
ግንቦት 2008	157.0	141.7	176.3	225.9	147.9	185.0	139.5	184.5	126.0	100.0	160.1	100.0	136.7	159.8	May "
ሰኔ 2008	152.4	136.5	172.4	201.0	151.0	189.5	140.2	190.0	126.0	100.0	194.7	100.0	135.7	164.6	June "
2009															2016/2017
ሐምሌ 2008	153.5	139.8	170.6	197.0	149.9	191.3	136.2	201.4	126.0	100.0	164.0	100.0	136.5	146.3	July 2016
ኦገስት 2008	157.2	141.6	176.7	183.3	153.1	217.4	138.7	171.7	126.0	100.0	160.1	100.0	143.1	157.4	August "
መስከረም 2009	156.1	145.5	169.4	174.5	150.0	203.1	138.6	181.7	126.0	100.0	160.1	100.0	140.3	157.6	September "
ጥቅምት 2009	157.2	146.0	171.3	184.1	151.8	199.9	139.0	174.0	126.0	100.0	196.6	100.0	143.2	156.8	October "
ህዳር 2009	163.3	150.9	179.0	197.9	147.2	211.9	145.7	178.1	126.0	100.0	196.6	100.0	144.2	162.8	November "
ታህሳስ 2009	168.5	149.6	192.3	208.8	147.6	247.5	139.4	172.1	126.0	100.0	196.6	100.0	147.9	160.7	December "
ጥር 2009	172.2	152.4	197.1	209.2	145.9	261.8	141.0	176.6	126.0	100.0	201.3	100.0	147.9	162.5	January 2017
የካቲት 2009	179.1	156.3	207.7	237.9	147.4	272.4	140.4	174.1	126.0	100.0	196.6	100.0	148.4	161.1	February "
መጋቢት 2009	183.0	161.2	210.4	241.8	147.7	277.5	140.8	173.9	126.0	100.0	196.6	100.0	148.1	161.7	February "

ሠንጠረዥ 13ሀ፣ ጠቅላላ የሽግግር ዋጋ መመዘኛ ኢንዱክሽን ቢሥሩ የተካተቱ ክፍሎች ስትግራይ ክልላዊ መንግስት
 ታህሳስ 2004 =100

Table 13a: General Consumer Price Index and Its Components for Tigray Regional State
 December 2011 = 100

ወርና ዓመት	ጠቅላላ ኢንዱክሽን	ምግብና አልኮሎል ያልሆኑ መጠባባቂ	ምግብ ነክ ያልሆኑ ኢንዱክሽን	Non-food Consumer Price Index Components											Month an Year
				መጠጥ ሲጃራና ትምባህ	ላብስና መጫጫያ	የቤት ኪራይ፣ የቤት መሥሪያ ስቃዎች+ውሃ፣ ነዳጅናሃይል	የቤት ስቃዎች የቤት ግብአቶች የቤት ቁሳቁስና የቤት ሠራተኛ ደመወዝ	ሕክምና	ትራንስፖርት	መገናኛ	መዝናኛና ባህል	ትምህርት	ሬስቶራንትና ሆቴሎች	ሌሎች ስቃዎች አገገሎቶች	
Month an Year	General Index	Food and Non-Alcoholic Beverages	Non-Food Index	Alcoholic Beverages and Tobacco	Clothing and Footwear	Housing, Water, Electricity, Gas and Other Fuels	Furnishings, Household Equipment and Routine Maintenance of the House	Health	Transport	Communication	Recreation and Culture	Education	Restaurants and Hotels	Misellaneous Goods and services	Month an Year
ታህሳስ 2004	100.0	100.0	100.0	100.0	100.0	100.0	100.0	100.0	100.0	100.0	100.0	100.0	100.0	100.0	December 2011
ሐምሌ 2004 - ሰኔ 2005	120.8	121.3	120.3	110.1	124.2	124.1	116.1	111.5	102.2	100.0	134.4	100.0	134.0	112.0	July 2012 - June 2013
ሐምሌ 2005 - ሰኔ 2006	131.1	130.2	131.9	123.3	142.1	136.2	130.7	120.1	103.3	100.0	147.0	100.8	145.4	117.7	July 2013 - June 2014
ሐምሌ 2006 - ሰኔ 2007	137.6	129.5	145.6	137.5	152.7	166.5	136.0	137.0	108.9	100.0	150.2	108.4	147.5	123.2	July 2014 - June 2015
ሐምሌ 2007 - ሰኔ 2008	154.2	145.6	162.6	138.4	164.2	210.9	143.8	142.7	106.1	104.9	163.7	114.8	150.8	127.2	July 2015 - June 2016
2008															2015/2016
ጥር 2008	155.2	148.2	162.2	139.7	167.8	207.5	144.3	140.3	106.9	107.5	163.5	115.3	151.7	123.6	January 2016
የካቲት 2008	157.1	145.2	168.8	153.6	161.6	230.3	143.4	129.3	105.3	105.9	176.9	115.3	151.5	125.7	February "
መጋቢት 2008	156.5	145.9	167.0	138.7	164.1	222.6	151.9	144.8	104.9	105.9	165.4	115.9	150.4	126.7	March "
ግድሃም 2008	162.4	146.1	178.5	136.7	167.4	262.4	143.2	145.2	107.6	105.9	164.7	116.6	153.0	127.8	April "
ግንቦት 2008	165.6	149.1	181.7	140.5	167.7	269.6	146.2	149.6	104.6	105.6	163.7	117.2	157.3	127.5	May "
ሰኔ 2008	167.5	155.1	179.7	140.2	166.9	266.3	147.7	179.9	104.9	105.6	171.8	117.8	142.8	131.0	June "
2009															2016/2017
ሐምሌ 2008	169.9	154.6	184.9	142.3	171.4	280.8	151.3	149.3	106.2	105.9	168.0	118.4	143.5	130.2	July 2016
ኔሐሴ 2008	166.3	158.8	173.7	139.7	173.2	245.9	146.6	158.1	104.5	105.0	166.0	118.4	144.1	124.6	August "
መስከረም 2009	173.4	166.3	180.4	139.6	172.6	262.5	146.1	157.2	103.3	105.6	175.0	118.4	155.0	129.7	September "
ጥቅምት 2009	173.1	159.6	186.4	139.5	170.6	288.9	146.4	147.9	103.3	105.9	185.0	119.0	144.8	127.9	October "
ህዳር 2009	175.9	159.2	192.3	136.8	175.9	298.1	159.9	174.2	104.2	105.6	196.6	119.0	143.9	130.5	November "
ታህሳስ 2009	174.2	151.8	196.2	140.4	175.0	294.4	179.2	157.7	104.3	105.6	219.4	119.0	159.2	131.3	December "
ጥር 2009	172.2	149.9	194.1	153.3	169.1	301.9	161.6	140.3	106.1	107.5	215.1	119.6	147.8	129.1	January 2017
የካቲት 2009	167.9	154.3	181.2	140.5	172.0	254.8	169.3	150.6	107.4	104.9	211.5	119.6	144.8	134.7	February "
መጋቢት 2009	164.5	157.4	171.5	136.0	171.0	218.8	168.9	181.2	109.3	105.9	216.3	119.6	151.4	132.1	February "

ሠንጠረዥ 1ለ፣ ጠቅላላ የምግብና የምግብ ክፍሎች የሽያጭ ዋጋ መመዘኛ ኢንዱስትሪ በአገር አቀፍ ደረጃ
 ታህሳስ 2004 =100

Table 1b: General Food Consumer Price Index and Its Components at Country Level
 December 2011 = 100

ወርና ዓመት	የምግብ ክፍሎች										Month an Year
	ምግብና ያልሆኑ መጠጦች	ጸባና እህል	ሥጋ	ወተት ዓይብና ዕንቁላል	ዘይትና ትባቶች	ፍራፍሬ	አትክልትና ጥራጥሬ	ሰጢር ግርና ፕክሌት	ሌሎች ምግቦች	አልኮሎል ያልሆኑ ቤቨጅ	
Month an Year	Food and Non- Alcoholic Beverages	Bread and Cereals	Meat (ND)	Milk, cheese and eggs (ND)	Oils and fats (ND)	Fruit (ND)	Vegetables	Sugar, jam, honey, chocolate.	Food products n.e.c. (ND)	Non-Alcoholic Beverages and coffee	Month an Year
ታህሳስ 2004	100.0	100.0	100.0	100.0	100.0	100.0	100.0	100.0	100.0	100.0	December 2006
ሐምሌ 2004 - ሰኔ 2005	117.6	119.4	141.0	127.8	107.7	125.5	121.4	108.9	117.0	83.0	July 2012 - June 2013
ሐምሌ 2005 - ሰኔ 2006	124.5	127.5	154.7	140.8	110.9	124.5	128.0	112.8	122.3	83.0	July 2013 - June 2014
ሐምሌ 2006 - ሰኔ 2007	133.8	126.1	164.6	159.8	132.4	137.1	139.8	114.9	147.7	97.0	July 2014 - June 2015
ሐምሌ 2007 - ሰኔ 2008	148.7	134.8	184.0	185.9	142.0	158.6	159.9	121.7	196.1	84.5	July 2015 - June 2016
2008											2015/2016
ጥር 2008	146.6	136.1	185.3	186.3	141.2	164.8	156.2	116.4	180.2	81.8	January 2016
የካቲት 2008	144.6	134.6	183.1	191.6	136.9	166.8	154.3	125.7	171.2	80.9	February "
መጋቢት 2008	146.2	134.3	182.1	191.9	134.7	163.9	161.2	132.0	171.5	80.6	March "
ግንቦት 2008	148.0	136.3	184.5	189.7	139.1	162.6	162.2	125.0	176.3	83.0	April "
ግንቦት 2008	151.9	138.4	193.6	204.8	144.7	159.1	167.3	128.4	175.3	84.1	May "
ሰኔ 2008	153.8	140.6	193.8	194.2	142.3	160.4	173.8	131.0	174.3	85.3	June "
2009											2016/2017
ሐምሌ 2008	153.8	142.0	196.1	191.6	141.2	165.9	171.7	132.4	171.7	87.6	July 2016
ነሐሴ 2008	156.0	144.7	195.7	194.4	140.7	164.1	173.4	131.9	176.2	92.2	August "
መስከረም 2009	161.5	148.5	205.6	199.2	145.2	165.4	177.1	132.7	192.6	97.1	September "
ጥቅምት 2009	157.8	148.4	200.4	196.0	141.8	166.1	164.8	137.5	193.8	98.3	October "
ህዳር 2009	154.5	144.9	198.5	200.9	140.0	166.2	160.9	142.9	179.7	99.7	November "
ታህሳስ 2009	153.2	141.0	197.7	196.1	142.4	167.3	163.0	152.7	172.2	100.0	December "
ጥር 2009	153.9	141.2	202.7	201.6	146.6	166.1	160.9	152.7	176.9	98.2	January 2017
የካቲት 2009	155.9	139.6	200.6	205.7	147.0	173.0	170.3	140.9	180.6	98.2	February "
መጋቢት 2009	160.2	143.9	199.6	203.5	148.6	179.8	179.4	141.1	186.6	98.1	March "
	9.6	7.2	9.6	6.0	10.3	9.8	11.3	6.9	8.8	21.8	

ሠንጠረዥ 3ለ፣ ጠቅላላ የምግብ የሽያጭ ዋጋ መመዘኛ ኢንዱክስ በሥሩ የተካተቱ ክፍሎች ለአዲስ አበባ ከተማ አስተዳደር

ታላላቅ 2004 = 100

Table 3b: General Food Consumer Price Index and Its Components for Addis Ababa City Administration

December 2011 = 100

ወርና ዓመት	የምግብ ክፍሎች Food Consumer Price Index Components										
	ምግብና አልኮሎል ያልሆኑ መጠባቂያ	ዳቦና ለህል	ሥጋ	ወተት ዓይብና ዕንቁላል	ዘይትና ቅባቶች	ፍራፍሬ	አትክልትና ጥራጥሬ	ስኳር ግርና ቸካሌት	ሌሎች ምግቦች	አልኮሎል ያልሆኑ መጠባቂያ	Month an Year
Month an Year	Food and Non-Alcoholic Beverages	Bread and Cereals	Meat (ND)	Milk, cheese and eggs (ND)	Oils and fats (ND)	Fruit (ND)	Vegetables	Sugar, jam, honey, chocolate.	Food products n.e.c. (ND)	Non-Alcoholic Beverages and Coffee	Month an Year
ታላላቅ 2004	100.0	100.0	100.0	100.0	100.0	100.0	100.0	100.0	100.0	100.0	December 2006
ሐምሌ 2004 - ሰኔ 2005	119.3	128.1	133.8	127.0	108.7	130.1	119.9	100.1	97.2	89.8	July 2012 - June 2013
ሐምሌ 2005 - ሰኔ 2006	124.9	131.3	144.1	135.5	112.6	141.4	127.5	102.0	102.1	90.6	July 2013 - June 2014
ሐምሌ 2006 - ሰኔ 2007	140.1	132.6	151.6	152.5	135.2	156.9	147.6	106.4	170.1	103.4	July 2014 - June 2015
ሐምሌ 2007 - ሰኔ 2008	163.4	143.2	179.1	179.8	144.4	181.0	181.5	116.4	257.5	97.2	July 2015 - June 2016
2008											2015/2016
ጥር 2008	157.7	147.0	179.9	182.0	141.7	184.2	174.8	108.5	191.8	94.8	January 2016
የካቲት 2008	151.6	138.7	180.7	179.7	135.7	189.7	165.0	126.8	174.0	94.4	February "
መጋቢት 2008	155.1	147.6	174.0	178.0	133.4	200.0	175.7	128.7	169.4	96.6	March "
ግንቦት 2008	157.4	148.3	179.1	175.2	134.6	201.1	183.1	128.8	164.8	98.5	April "
ግንቦት 2008	164.5	151.4	187.1	186.6	143.6	193.1	199.9	128.5	165.3	98.4	May "
ሰኔ 2008	164.9	155.1	183.1	183.7	141.5	180.1	202.4	129.0	163.0	98.1	June "
2009											2016/2017
ሐምሌ 2008	170.1	156.6	183.9	185.5	140.1	182.2	223.8	129.1	164.2	101.2	July 2016
ክሐሴ 2008	169.4	159.0	188.4	184.9	141.0	178.6	213.6	123.3	163.4	102.8	August "
መስከረም 2009	174.4	165.1	191.8	187.3	143.9	161.0	223.8	122.5	165.5	105.9	September "
ጥቅምት 2009	168.1	170.7	191.5	185.0	142.5	161.3	186.8	122.3	162.0	106.6	October "
ህዳር 2009	161.6	165.4	185.2	189.7	141.1	159.4	178.2	122.3	134.8	106.6	November "
ታላላቅ 2009	160.6	162.5	186.1	188.0	137.5	168.3	180.2	129.0	125.8	111.0	December "
ጥር 2009	159.0	160.6	183.4	194.0	141.1	176.5	174.8	129.0	125.0	108.2	January 2017
የካቲት 2009	157.3	157.6	183.4	192.1	141.0	193.7	175.0	129.3	113.0	107.7	February "
መጋቢት 2009	165.8	161.1	178.3	190.9	142.2	213.2	213.0	129.2	114.4	108.2	February "

ሠንጠረዥ 4ብ፣ ጠቅላላ የምግብ የሽግግር ዋጋ መመዘኛ ኢንዱክስ በሥሩ የተካተቱ ክፍሎች ለአፋር ክልል መገንባት
 ታህሳስ 2004 =100

Table 4b: Consumer Price Index of Total Food and Its Components for Afar Regional State
 December 2011 = 100

ወርና ዓመት	የምግብ ክፍሎች Food Consumer Price Index Components										ወርና ዓመት
	ምግብና አልኮሎል ያልሆኑ መጠባባቾች	ዳቦና አህል	ሥጋ	ወተት ዓይብና ዕንቁላል	ዘይትና ቅባቶች	ፍራፍሬ	አትክልትና ጥራጥሬ	ስኬር ግርና ቸክሊት	ሌሎች ምግቦች	አልኮሎል ያልሆኑ መጠባባቾች	
Month an Year	Food and Non-Alcoholic	Bread and Cereals	Meat (ND)	Milk, cheese and eggs (ND)	Oils and fats (ND)	Fruit (ND)	Vegetables	Sugar, jam, honey, chocolate	Food products n.e.c. (ND)	Non-Alcoholic Beverages and coffee	Month an Year
ታህሳስ 2004	100.0	100.0	100.0	100.0	100.0	100.0	100.0	100.0	100.0	100.0	December 2006
ሐምሌ 2004 - ሰኔ 2005	116.4	113.5	166.9	130.8	102.6	117.3	124.3	117.0	105.6	93.6	July 2012 - June 2013
ሐምሌ 2005 - ሰኔ 2006	124.7	123.6	188.5	143.1	106.6	135.3	132.9	120.1	106.7	91.4	July 2013 - June 2014
ሐምሌ 2006 - ሰኔ 2007	131.9	119.2	202.0	145.0	122.1	155.2	146.5	139.7	171.9	105.2	July 2014 - June 2015
ሐምሌ 2007 - ሰኔ 2008	150.4	127.3	216.0	165.0	136.1	179.6	196.8	118.7	273.2	101.0	July 2015 - June 2016
2008											2015/2016
ጥር 2008	147.3	128.2	213.4	165.2	127.7	180.7	200.5	118.1	217.5	101.1	January 2016
የካቲት 2008	146.6	132.6	205.9	168.1	125.3	188.8	179.7	118.7	201.5	100.9	February "
መጋቢት 2008	147.9	134.5	214.7	167.1	131.2	185.1	182.9	120.0	201.0	100.8	March "
ጊያዝያ 2008	154.4	126.2	211.2	208.7	132.7	180.1	193.2	122.4	200.8	101.4	April "
ግንቦት 2008	149.0	127.8	250.7	161.9	136.6	175.5	226.7	121.4	195.1	101.3	May "
ሰኔ 2008	147.6	129.0	252.6	168.2	126.2	190.2	222.4	118.7	159.1	99.2	June "
2009											2016/2017
ሐምሌ 2008	151.6	131.1	234.0	168.1	138.7	186.4	242.4	118.3	169.4	103.1	July 2016
ክሐሴ 2008	152.6	132.4	236.0	167.7	134.5	182.3	244.7	119.3	179.1	101.8	August "
መስከረም 2009	157.3	133.2	256.4	182.2	142.2	175.8	246.7	120.2	187.4	101.2	September "
ጥቅምት 2009	158.3	135.3	236.2	197.9	132.0	180.7	224.0	122.6	172.1	108.6	October "
ህዳር 2009	154.4	137.0	248.6	192.7	145.3	182.4	192.2	127.5	147.2	107.9	November "
ታህሳስ 2009	147.9	133.6	247.3	177.8	148.2	180.3	180.2	140.1	129.6	104.5	December "
ጥር 2009	149.3	129.2	242.3	183.2	152.6	191.5	191.7	145.4	131.1	109.4	January 2017
የካቲት 2009	147.9	129.8	236.2	187.8	152.0	180.1	176.4	139.1	126.2	105.4	February "
መጋቢት 2009	148.9	133.2	228.6	178.2	154.5	179.8	195.4	139.1	121.1	105.7	February "

ሠንጠረዥ 5A1፡ ጠቅላላ የምግብ የሽግግር ዋጋ መመዘኛ ኢንዱክስ በሥሩ የተካተቱ ክፍሎች ለአማራ ክልላዊ መንግስት
 ታህሳስ 2004 =100

Table 5b: Consumer Price Index of Total Food and Its Components for Amhara Regional State
 December 2011 = 100

ወርና ዓመት	የምግብ ክፍሎች Food Consumer Price Index Components										
	ምግብና አልኮሎል ያልሆኑ መጠቦች	ዳቦና እህል	ሥጋ	ወተት ዓይብና ዕንቁላል	ዘይትና ትባቶች	ፍራፍሬ	አትክልትና ጥራጥሬ	ስኳር ግርና ቸካሌት	ሌሎች ምግቦች	አልኮሎል ያልሆኑ መጠቦች	Month an Year
Month an Year	Food and Non-Alcoholic Beverages	Bread and Cereals	Meat (ND)	Milk, cheese and eggs (ND)	Oils and fats (ND)	Fruit (ND)	Vegetables	Sugar, jam, honey, chocolate.	Food products n.e.c. (ND)	Non-Alcoholic Beverages and Coffee	Month an Year
ታህሳስ 2004	100.0	100.0	100.0	100.0	100.0	100.0	100.0	100.0	100.0	100.0	December 2006
ሐምሌ 2004 - ሰኔ 2005	120.0	123.8	138.2	131.0	107.5	131.4	107.5	99.5	140.7	85.3	July 2012 - June 2013
ሐምሌ 2005 - ሰኔ 2006	125.6	130.6	146.5	146.7	110.9	150.1	108.1	99.8	152.9	84.5	July 2013 - June 2014
ሐምሌ 2006 - ሰኔ 2007	128.7	128.2	153.6	162.1	129.7	161.6	111.2	100.1	151.4	99.8	July 2014 - June 2015
ሐምሌ 2007 - ሰኔ 2008	141.4	137.9	169.5	181.1	146.4	191.1	133.0	110.4	160.9	91.5	July 2015 - June 2016
2008											2015/2016
ጥር 2008	141.9	140.4	170.8	179.8	139.2	196.2	132.2	100.5	162.6	92.4	January 2016
የካቲት 2008	141.2	139.4	169.5	187.1	141.7	199.3	131.6	124.7	160.5	88.1	February "
መጋቢት 2008	140.5	138.2	166.9	188.0	137.2	199.3	130.7	124.9	162.3	90.8	March "
ግንቦት 2008	142.5	138.3	171.6	181.8	141.7	197.6	132.2	125.1	168.0	89.7	April "
ግንቦት 2008	146.1	138.9	185.9	195.8	148.2	194.3	140.9	124.7	162.7	90.3	May "
ሰኔ 2008	144.9	139.9	179.8	193.0	144.9	190.1	140.4	123.5	161.3	87.4	June "
2009											2016/2017
ሐምሌ 2008	146.7	142.7	186.0	197.0	143.1	200.2	140.9	125.1	161.4	87.6	July 2016
ክሐሴ 2008	152.0	146.3	184.2	194.1	141.6	218.5	145.6	119.0	178.2	96.3	August "
መስከረም 2009	163.0	149.6	202.3	200.7	144.7	218.0	149.4	117.3	219.2	99.0	September "
ጥቅምት 2009	160.4	147.7	191.7	197.6	142.0	210.1	138.7	116.8	230.9	100.9	October "
ህዳር 2009	154.1	142.0	192.7	199.6	137.7	209.0	132.8	116.1	212.3	102.6	November "
ታህሳስ 2009	151.9	139.9	193.4	196.7	142.2	214.3	130.6	121.9	204.4	102.5	December "
ጥር 2009	154.5	141.0	199.1	207.9	142.8	215.6	131.3	125.2	211.1	104.4	January 2017
የካቲት 2009	154.8	140.1	192.9	206.8	144.4	215.3	131.0	124.9	218.9	104.0	February "
መጋቢት 2009	160.7	144.4	194.8	198.4	147.8	222.6	137.8	125.4	233.9	104.5	February "

ሠንጠረዥ 6ቤ፣ ጠቅላላ የምግብ የሽግግር ዋጋ መመዘኛ ኢንዱክስ በሥሩ የተካተቱ ክፍሎች ለበኒሻንጉል ጉሙዝ ክልላዊ መንግስት
 ታህሳስ 2004 =100

Table 6b: Consumer Price Index of Total Food and Its Components for Benishangul-Gumuz Regional State
 December 2011 = 100

ወርና ዓመት	የምግብ ክፍሎች Food Consumer Price Index Components										ወርና ዓመት
	ምግብና አልኮሎል ያልሆኑ መጠጦች	ጸባና እህል	ሥጋ	ወተት ዓይብና ዕንቁላል	ዘይትና ትባቶች	ፍራፍሬ	አትክልትና ጥራጥሬ	ስኳር ግርና ቸካሌት	ሌሎች ምግቦች	አልኮሎል ያልሆኑ መጠጦች	
Month an Year	Food and Non- Alcoholic	Bread and Cereals	Meat (ND)	Milk, cheese and eggs (ND)	Oils and fats (ND)	Fruit (ND)	Vegetables	Sugar, jam, honey, chocolate	Food products n.e.c. (ND)	Non-Alcoholic Beverages and Coffees	Month an Year
ታህሳስ 2004	100.0	100.0	100.0	100.0	100.0	100.0	100.0	100.0	100.0	100.0	December 2006
ሐምሌ 2004 - ሰኔ 2005	107.5	102.8	134.7	126.9	112.2	174.6	101.4	108.5	128.9	75.4	July 2012 - June 2013
ሐምሌ 2005 - ሰኔ 2006	114.9	119.6	139.3	146.2	111.3	173.2	101.8	104.9	128.0	80.6	July 2013 - June 2014
ሐምሌ 2006 - ሰኔ 2007	114.0	100.0	145.4	137.1	113.7	169.0	115.3	100.5	147.9	88.4	July 2014 - June 2015
ሐምሌ 2007 - ሰኔ 2008	127.5	96.5	173.7	139.8	114.2	198.3	138.9	110.3	213.7	77.5	July 2015 - June 2016
2007											2014/2015
2008											2015/2016
ጥር 2008	127.2	99.0	177.0	130.7	111.9	232.4	134.9	104.0	210.3	77.1	January 2016
የካቲት 2008	124.3	97.0	170.4	132.5	114.5	202.8	136.0	113.3	192.9	76.2	February "
መጋቢት 2008	121.1	91.5	178.5	131.7	114.7	192.8	129.9	120.7	186.7	76.8	March "
ግንቦት 2008	122.8	87.8	173.9	147.0	116.0	199.7	132.9	120.7	211.6	75.6	April "
ግንቦት 2008	126.5	90.0	181.3	161.3	117.9	189.3	142.7	120.9	207.3	76.2	May "
ሰኔ 2008	128.3	93.9	186.7	156.1	117.5	212.5	145.3	120.0	198.8	77.8	June "
2009											2016/2017
ሐምሌ 2008	128.0	93.3	183.8	160.5	113.4	226.7	147.2	120.5	195.3	80.7	July 2016
ክለሌ 2008	131.7	98.2	191.8	158.9	113.7	247.0	151.7	115.8	190.1	87.1	August "
መስከረም 2009	134.5	100.4	186.9	159.6	117.4	210.8	156.9	115.9	200.8	88.2	September "
ጥቅምት 2009	132.9	103.3	182.5	165.2	114.8	221.7	137.7	114.5	213.8	96.2	October "
ህዳር 2009	131.2	105.6	182.6	157.8	115.9	219.1	127.8	111.3	212.6	95.5	November "
ታህሳስ 2009	131.2	103.4	182.1	155.4	114.5	239.8	133.8	111.3	208.1	95.6	December "
ጥር 2009	132.2	102.6	188.2	160.1	121.9	215.7	132.2	117.8	224.2	82.1	January 2017
የካቲት 2009	131.8	100.9	184.9	159.0	123.1	230.4	134.0	118.8	229.4	75.1	February "
መጋቢት 2009	134.0	102.7	175.8	173.8	128.9	238.9	139.7	120.9	229.3	80.8	February "

ሠንጠረዥ 7ሰፊ፣ ጠቅላላ የምግብ የሽግግር ዋጋ መመዘኛ ኢንዱክስ በሥሩ የተካተቱ ክፍሎች ስድራላዋ ከተማ አስተዳደር
 ታህሳስ 2004 =100

Table7b: Consumer Price Index of Total Food and Its Components for Dire Dawa City Administration
 December 2011 = 100

ወርና ዓመት	የምግብ ክፍሎች Food Consumer Price Index Components										ወርና ዓመት
	ምግብና አልኮሎል ያልሆኑ መጠባባቾች	ዳቦና አህል	ሥጋ	ወተት ዓይብና ዕንቁላል	ዘይትና ቅባቶች	ፍራፍሬ	አትክልትና ጥራጥሬ	ስኬር ግርና ቸካሌት	ሌሎች ምግቦች	አልኮሎል ያልሆኑ መጠባባቾች	
Month an Year	Food and Non-Alcoholic	Bread and Cereals	Meat (ND)	Milk, cheese and eggs (ND)	Oils and fats (ND)	Fruit (ND)	Vegetables	Sugar, jam, honey, chocolate	Food products n.e.c. (ND)	Non-Alcoholic Beverages and Coffees	Month an Year
ታህሳስ 2004	100.0	100.0	100.0	100.0	100.0	100.0	100.0	100.0	100.0	100.0	December 2006
ሐምሌ 2004 - ሰኔ 2005	111.8	109.7	149.4	127.1	87.6	125.5	117.3	102.1	130.4	127.8	July 2012 - June 2013
ሐምሌ 2005 - ሰኔ 2006	119.7	118.0	151.0	130.7	86.9	132.7	130.7	106.2	148.5	133.6	July 2013 - June 2014
ሐምሌ 2006 - ሰኔ 2007	129.2	122.8	168.9	155.0	108.9	143.8	150.4	108.8	148.7	131.7	July 2014 - June 2015
ሐምሌ 2007 - ሰኔ 2008	134.1	125.5	205.1	179.9	91.3	164.4	168.0	119.0	152.0	128.4	July 2015 - June 2016
2008											2015/2016
ጥር 2008	134.8	127.3	206.2	175.8	91.3	170.1	169.3	113.7	151.8	123.9	January 2016
የካቲት 2008	132.1	127.5	206.9	178.8	91.2	169.6	151.6	113.5	149.2	122.2	February "
መጋቢት 2008	133.3	128.0	204.6	179.1	91.0	168.2	149.9	132.7	157.1	125.2	March "
ጊዳር 2008	135.5	126.7	202.9	182.7	91.1	172.4	162.4	135.6	154.4	139.6	April "
ግንቦት 2008	145.9	128.0	222.3	190.9	92.1	171.7	221.0	133.5	157.1	135.8	May "
ሰኔ 2008	141.7	127.9	218.8	198.8	91.1	172.1	192.7	133.6	151.7	139.5	June "
2009											2016/2017
ሐምሌ 2008	141.7	129.5	233.2	199.8	90.8	189.3	183.8	134.0	154.7	138.8	July 2016
ክለሴ 2008	145.3	136.0	216.8	198.4	101.3	171.4	179.4	134.2	152.4	146.2	August "
መስከረም 2009	149.3	132.9	225.6	198.4	101.8	167.3	215.3	134.6	159.9	139.5	September "
ጥቅምት 2009	148.9	129.0	230.3	202.0	101.4	163.2	217.8	133.9	193.4	137.3	October "
ህዳር 2009	146.2	133.0	229.4	198.4	101.5	164.0	186.3	134.0	195.6	141.1	November "
ታህሳስ 2009	144.3	130.1	224.8	198.3	101.4	163.9	184.8	134.2	195.4	139.7	December "
ጥር 2009	141.6	128.2	226.3	200.6	101.5	166.4	173.8	134.6	197.9	134.7	January 2017
የካቲት 2009	140.3	127.2	228.2	198.4	101.7	183.4	157.6	141.9	218.1	144.7	February "
መጋቢት 2009	149.5	127.9	229.5	197.4	101.5	198.9	204.4	147.7	237.2	151.5	February "

ሠንጠረዥ 8A: ጠቅላላ የምግብ የሽግግር ዋጋ መመዘኛ ኢንዱስትሪ ቢሮ የተካተቱ ክፍሎች ስጋምሌ ክልል መገንባት
 ታህሳስ 2004 =100

Table 8b: Consumer Price Index of Total Food and Its Components for Gambella Regional State
 December 2011 = 100

ወርና ዓመት	የምግብ ክፍሎች Food Consumer Price Index Components										
	ምግብና አልኮሎል ያልሆኑ መጠጦች	ዳቦና እህል	ሥጋ	ወተት ዓይብና ዕንቁላል	ዘይትና ትባቶች	ፍራፍሬ	አትክልትና ጥራጥሬ	ስኳር ግርና ቸካሌት	ሌሎች ምግቦች	አልኮሎል ያልሆኑ መጠጦች	Month an Year
Month an Year	Food and Non-Alcoholic Beverages	Bread and Cereals	Meat (ND)	Milk, cheese and eggs (ND)	Oils and fats (ND)	Fruit (ND)	Vegetables	Sugar, jam, honey, chocolate.	Food products n.e.c. (ND)	Non-Alcoholic Beverages and Coffee	Month an Year
ታህሳስ 2004	100.0	100.0	100.0	100.0	100.0	100.0	100.0	100.0	100.0	100.0	December 2006
ሐምሌ 2004 - ሰኔ 2005	114.8	104.4	132.8	125.3	104.0	130.7	126.6	107.8	130.6	77.9	July 2012 - June 2013
ሐምሌ 2005 - ሰኔ 2006	124.2	115.1	146.5	147.2	104.2	107.6	134.7	112.1	136.4	82.2	July 2013 - June 2014
ሐምሌ 2006 - ሰኔ 2007	129.9	111.4	155.9	163.9	99.9	131.8	148.6	116.4	141.1	99.5	July 2014 - June 2015
ሐምሌ 2007 - ሰኔ 2008	142.9	116.8	180.1	204.8	101.2	145.1	178.0	131.8	145.7	80.1	July 2015 - June 2016
2008											2015/2016
ጥር 2008	137.8	109.3	175.1	207.1	99.9	145.8	172.3	125.0	149.4	72.7	January 2016
የካቲት 2008	140.5	118.2	177.4	207.2	100.2	145.6	167.9	125.0	143.6	72.7	February "
መጋቢት 2008	140.4	117.9	180.2	207.1	99.5	145.3	165.8	137.0	136.2	71.6	March "
ጊያዝያ 2008	142.8	119.8	186.3	208.4	99.5	145.9	163.5	146.2	143.0	73.8	April "
ግንቦት 2008	148.1	121.3	178.4	215.7	104.8	146.3	194.5	152.8	155.5	77.1	May "
ሰኔ 2008	150.1	128.8	178.0	215.8	107.5	145.3	190.0	155.5	154.1	77.1	June "
2009											2016/2017
ሐምሌ 2008	151.7	129.5	176.5	226.6	108.3	145.3	192.3	174.2	160.7	77.7	July 2016
ክሐሴ 2008	148.3	124.7	176.2	226.7	91.4	146.3	182.5	180.0	159.7	86.0	August "
መስከረም 2009	154.9	122.7	199.2	227.5	97.9	145.2	189.1	150.5	173.5	95.4	September "
ጥቅምት 2009	151.5	122.9	193.5	215.7	91.4	146.2	182.2	155.5	163.3	97.2	October "
ህዳር 2009	146.1	116.9	190.2	216.1	93.0	146.2	161.9	166.9	163.5	98.9	November "
ታህሳስ 2009	150.0	120.1	189.5	246.2	95.1	146.2	170.2	165.4	165.9	97.2	December "
ጥር 2009	150.1	120.2	192.2	216.3	97.7	145.4	173.3	152.7	172.9	101.3	January 2017
የካቲት 2009	150.2	119.4	193.8	222.9	93.3	139.2	165.9	154.3	200.9	97.3	February "
መጋቢት 2009	153.1	121.0	191.7	216.4	90.3	144.9	188.8	152.7	202.9	93.5	February "

ሠንጠረዥ 9ብ፣ ጠቅላላ የምግብ የሽግግር ዋጋ መመዘኛ ኢንዱክስ በሥሩ የተካተቱ ክፍሎች ስሐረሬ ክልላዊ መገንባት
 ታህሳስ 2004 =100

Table 9b: Consumer Price Index of Total Food and Its Components for Harari Regional State
 December 2011 = 100

ወርና ዓመት	የምግብ ክፍሎች Food Consumer Price Index Components										
	ምግብና አልኮሎል ያልሆኑ መጠጦች	ዳቦና እህል	ሥጋ	ወተት ዓይብና ዕንቁላል	ዘይትና ትባቶች	ፍራፍሬ	አትክልትና ጥራጥሬ	ስኳር ግርና ቸካሌት	ሌሎች ምግቦች	አልኮሎል ያልሆኑ መጠጦች	
	Food and Non- Alcoholic Beverages	Bread and Cereals	Meat (ND)	Milk, cheese and eggs (ND)	Oils and fats (ND)	Fruit (ND)	Vegetables	Sugar, jam, honey, chocolate.	Food products n.e.c. (ND)	Non-Alcoholic Beverages and Coffee	Month an Year
ታህሳስ 2004	100.0	100.0	100.0	100.0	100.0	100.0	100.0	100.0	100.0	100.0	December 2006
ሐምሌ 2004 - ሰኔ 2005	119.0	116.7	148.7	114.8	96.6	115.5	127.3	101.3	117.7	109.6	July 2012 - June 2013
ሐምሌ 2005 - ሰኔ 2006	131.5	128.4	173.6	128.7	94.7	122.2	154.6	100.9	116.7	103.7	July 2013 - June 2014
ሐምሌ 2006 - ሰኔ 2007	145.6	141.8	193.7	143.1	96.6	152.1	183.4	100.7	133.0	96.0	July 2014 - June 2015
ሐምሌ 2007 - ሰኔ 2008	156.5	142.8	213.3	165.7	97.5	150.5	210.3	110.3	221.0	88.6	July 2015 - June 2016
2008											2015/2016
ጥር 2008	157.6	145.1	206.8	165.7	98.4	147.9	221.0	99.0	219.8	83.8	January 2016
የካቲት 2008	155.5	143.3	206.7	165.4	98.4	154.5	209.4	125.4	201.6	82.4	February "
መጋቢት 2008	154.1	142.9	206.7	165.1	98.4	151.6	192.8	125.4	214.2	84.8	March "
ግድሃ 2008	158.7	142.5	216.9	173.3	96.3	152.1	209.2	125.4	239.7	95.7	April "
ግንቦት 2008	165.4	138.1	234.5	176.2	96.6	192.7	267.7	125.4	241.2	99.1	May "
ሰኔ 2008	166.5	139.2	244.6	187.0	96.6	183.4	259.5	125.4	226.6	101.6	June "
2009											2016/2017
ሐምሌ 2008	167.2	142.3	249.1	168.9	96.6	157.6	264.5	125.4	226.7	97.7	July 2016
ክሐሴ 2008	169.8	151.2	244.8	188.1	96.5	164.6	246.0	126.7	186.5	104.1	August "
መስከረም 2009	178.5	154.0	253.6	208.7	96.4	147.0	292.1	126.7	177.3	109.8	September "
ጥቅምት 2009	169.6	153.2	239.6	194.6	96.5	151.8	240.3	126.7	160.6	118.5	October "
ህዳር 2009	169.9	146.2	246.7	204.3	96.5	149.0	260.3	126.7	167.6	118.6	November "
ታህሳስ 2009	168.0	150.5	245.8	203.6	96.4	159.4	222.7	118.6	173.1	118.1	December "
ጥር 2009	160.7	138.2	259.7	203.8	96.6	154.5	195.4	121.4	189.1	114.4	January 2017
የካቲት 2009	163.5	139.7	246.3	200.2	98.3	163.3	222.1	123.2	202.7	118.9	February "
መጋቢት 2009	173.2	140.7	253.4	203.6	98.4	176.6	295.4	121.4	187.9	138.0	February "

ሠንጠረዥ 10ሀ፣ ጠቅላላ የምግብ የሽግግር ዋጋ መመዘኛ ኢንዱክስ በሥሩ የተካተቱ ክፍሎች ለአርጊያ ክልላዊ መንግስት
 ታህሳስ 2004 =100

Table 10b: Consumer Price Index of Total Food and Its Components for Oromia Regional State
 December 2011 = 100

ወርና ዓመት	የምግብ ክፍሎች Food Consumer Price Index Components										
	ምግብና አልኮሎል ያልሆኑ መጠጦች	ዳቦና እህል	ሥጋ	ወተት ዓይብና ዕንቁላል	ዘይትና ትባቶች	ፍራፍሬ	አትክልትና ጥራጥሬ	ስኳር ግርና ቸኩሊት	ሌሎች ምግቦች	አልኮሎል ያልሆኑ መጠጦች	Month an Year
Month an Year	Food and Non- Alcoholic Beverages	Bread and Cereals	Meat (ND)	Milk, cheese and eggs (ND)	Oils and fats (ND)	Fruit (ND)	Vegetables	Sugar, jam, honey, chocolate.	Food products n.e.c. (ND)	Non-Alcoholic Beverages and Coffee	Month an Year
ታህሳስ 2004	100.0	100.0	100.0	100.0	100.0	100.0	100.0	100.0	100.0	100.0	December 2006
ሐምሌ 2004 - ሰኔ 2005	115.6	117.2	145.8	131.6	107.8	128.7	118.1	111.3	96.4	80.1	July 2012 - June 2013
ሐምሌ 2005 - ሰኔ 2006	123.3	125.4	160.9	144.9	111.6	132.0	123.1	123.3	96.3	80.2	July 2013 - June 2014
ሐምሌ 2006 - ሰኔ 2007	139.5	126.9	175.9	167.8	140.2	138.1	143.1	125.9	149.2	90.0	July 2014 - June 2015
ሐምሌ 2007 - ሰኔ 2008	158.1	135.5	199.7	200.1	150.1	157.8	165.0	130.9	222.5	78.4	July 2015 - June 2016
2008											2015/2016
ጥር 2008	153.4	137.1	201.5	201.7	151.8	162.7	149.5	123.4	186.7	76.7	January 2016
የካቲት 2008	152.9	135.5	198.8	205.4	145.0	160.6	157.9	134.7	169.4	75.0	February "
መጋቢት 2008	155.7	133.6	200.0	203.6	142.2	161.3	170.0	145.6	170.0	74.0	March "
ጊያዝያ 2008	156.4	136.5	198.0	203.6	147.3	161.4	172.3	126.2	168.9	77.9	April "
ግንቦት 2008	156.9	137.9	206.4	227.8	153.8	162.2	174.2	133.9	168.5	79.3	May "
ሰኔ 2008	158.4	139.4	209.9	210.9	152.1	164.2	182.7	140.4	164.2	81.6	June "
2009											2016/2017
ሐምሌ 2008	159.9	140.8	211.3	207.1	150.6	164.9	185.9	144.4	159.7	85.3	July 2016
ክሐሴ 2008	159.0	145.1	210.2	206.2	151.2	154.9	182.2	144.7	159.0	89.1	August "
መስከረም 2009	163.0	148.5	216.6	212.3	156.0	157.7	187.7	144.5	157.4	95.3	September "
ጥቅምት 2009	159.1	150.4	212.8	205.3	152.4	157.5	167.8	150.7	149.4	96.6	October "
ህዳር 2009	155.6	146.7	207.1	209.8	151.5	161.3	157.2	154.0	138.9	99.2	November "
ታህሳስ 2009	153.2	141.1	212.3	204.0	153.4	158.7	157.1	172.6	124.0	100.9	December "
ጥር 2009	156.0	140.2	215.3	210.8	158.0	161.5	158.7	173.3	129.2	96.9	January 2017
የካቲት 2009	153.7	136.6	215.3	215.7	156.8	166.8	162.8	142.7	126.6	95.4	February "
መጋቢት 2009	157.1	141.7	209.9	211.1	155.9	169.3	173.4	142.9	125.6	95.0	February "

ሠንጠረዥ 11A: ጠቅላላ የምግብ የሽግግር ዋጋ መመዘኛ ኢንዱስትሪ በሥሩ የተካተቱ ክፍሎች ለደቡብ ህዝቦች ክልላዊ መገንባት
 ታህሳስ 2004 =100

Table 12b: Consumer Price Index of Total Food and Its Components for SNNP Regional State
 December 2011 = 100

ወርና ዓመት	የምግብ ክፍሎች Food Consumer Price Index Components										
	ምግብና አልኮሎል ያልሆኑ መጠቦች	ዳቦና እህል	ሥጋ	ወተት ዓይብና ዕንቁላል	ዘይትና ትባቶች	ፍራፍሬ	አትክልትና ጥራጥሬ	ስኳር ግርና ቸካሌት	ሌሎች ምግቦች	አልኮሎል ያልሆኑ መጠቦች	Month an Year
Month an Year	Food and Non- Alcoholic Beverages	Bread and Cereals	Meat (ND)	Milk, cheese and eggs (ND)	Oils and fats (ND)	Fruit (ND)	Vegetables	Sugar, jam, honey, chocolate.	Food products n.e.c. (ND)	Non-Alcoholic Beverages and Coffee	Month an Year
ታህሳስ 2004	100.0	100.0	100.0	100.0	100.0	100.0	100.0	100.0	100.0	100.0	December 2006
ሐምሌ 2004 - ሰኔ 2005	123.2	117.0	144.6	121.6	109.1	119.0	135.2	100.5	105.2	84.4	July 2012 - June 2013
ሐምሌ 2005 - ሰኔ 2006	131.8	123.3	163.8	136.8	112.5	112.5	146.1	100.4	108.7	84.3	July 2013 - June 2014
ሐምሌ 2006 - ሰኔ 2007	139.1	119.7	176.4	157.0	125.7	125.1	153.4	103.7	128.0	108.9	July 2014 - June 2015
ሐምሌ 2007 - ሰኔ 2008	152.1	128.9	196.4	176.2	133.1	144.1	167.5	106.4	199.5	88.1	July 2015 - June 2016
2008											2015/2016
ጥር 2008	152.9	127.6	196.8	174.7	132.4	152.4	173.0	99.9	192.1	79.8	January 2016
የካቲት 2008	148.1	126.5	194.4	180.0	128.3	157.6	162.9	104.9	183.4	82.9	February "
መጋቢት 2008	151.5	128.5	194.6	187.2	128.3	143.9	169.2	109.6	187.0	81.5	March "
ጊያዝያ 2008	153.8	132.4	201.3	178.2	135.7	139.4	167.6	111.9	209.6	83.7	April "
ግንቦት 2008	158.3	138.9	201.4	188.3	138.4	132.8	171.0	113.1	222.4	85.5	May "
ሰኔ 2008	163.8	142.6	206.1	191.2	133.2	139.2	179.1	112.3	235.7	88.6	June "
2009											2016/2017
ሐምሌ 2008	158.7	144.2	205.2	183.9	132.2	151.0	167.3	113.9	224.4	89.4	July 2016
ክሐሴ 2008	160.4	138.0	205.8	193.2	129.2	148.9	176.0	112.5	211.7	94.4	August "
መስከረም 2009	163.4	144.9	210.3	188.4	137.9	160.0	174.9	112.5	218.9	99.0	September "
ጥቅምት 2009	161.5	141.6	210.0	188.5	131.0	166.6	173.6	113.3	216.8	99.2	October "
ህዳር 2009	161.5	139.9	209.0	193.1	126.6	163.9	178.7	115.6	192.5	96.1	November "
ታህሳስ 2009	164.8	141.1	202.9	194.1	132.4	163.4	185.9	107.4	201.4	93.3	December "
ጥር 2009	164.6	143.8	211.1	195.2	142.4	153.6	180.0	113.6	208.7	92.6	January 2017
የካቲት 2009	174.4	143.4	212.1	198.0	139.6	164.0	202.6	112.8	216.0	96.1	February "
መጋቢት 2009	178.4	146.8	214.5	201.7	146.4	173.6	207.5	115.8	220.9	96.1	February "

ሠንጠረዥ 12ለ1 ጠቅላላ የምግብ የሽግግር ዋጋ መመዘኛ ኢንዱክስ በሥሩ የተካተቱ ክፍሎች ለሱማሌ ክልላዊ መንግስት
 ታህሳስ 2004 =100

Table 12b: Consumer Price Index of Total Food and Its Components for Somali Regional State
 December 2011 = 100

ወርና ዓመት	የምግብ ክፍሎች Food Consumer Price Index Components										ወርና ዓመት
	ምግብና አልኮሎል የልሆኑ መጠቦች	ጸብና እህል	ሥጋ	ወተት ዓይብና ዕንቁላል	ዘይትና ቅባቶች	ፍራፍሬ	አትክልትና ጥራጥሬ	ስኳር ግርና ቸካሌት	ሌሎች ምግቦች	አልኮሎል የልሆኑ መጠቦች	
Month an Year	Food and Non- Alcoholic Beverages	Bread and Cereals	Meat (ND)	Milk, cheese and eggs (ND)	Oils and fats (ND)	Fruit (ND)	Vegetables	Sugar, jam, honey, chocolate.	Food products n.e.c. (ND)	Non-Alcoholic Beverages and Coffee	Month an Year
ታህሳስ 2004	100.0	100.0	100.0	100.0	100.0	100.0	100.0	100.0	100.0	100.0	December 2006
ሐምሌ 2004 - ሰኔ 2005	115.5	109.8	142.1	117.6	101.1	135.6	125.4	116.0	126.7	179.4	July 2012 - June 2013
ሐምሌ 2005 - ሰኔ 2006	123.0	121.0	149.2	125.2	97.4	169.2	143.2	111.5	149.1	201.0	July 2013 - June 2014
ሐምሌ 2007 - ሰኔ 2008	137.3	132.1	163.8	154.8	105.8	239.0	164.7	120.8	158.4	214.8	July 2015 - June 2016
2008											2015/2016
ጥር 2008	137.7	132.4	162.2	153.5	107.5	236.7	166.6	123.1	153.8	215.6	January 2016
የካቲት 2008	140.4	134.6	164.1	170.0	104.4	266.6	149.8	119.7	170.6	212.8	February "
መጋቢት 2008	141.2	135.4	164.8	172.4	104.2	266.9	146.5	124.2	156.9	211.9	March "
ግንቦት 2008	139.9	134.3	172.9	162.9	104.8	266.9	156.0	124.7	156.0	207.9	April "
ግንቦት 2008	141.7	130.7	178.7	164.2	99.7	227.2	220.8	125.8	156.1	212.7	May "
ሰኔ 2008	136.5	130.9	173.5	137.5	99.3	240.3	209.0	126.9	148.0	206.8	June "
2009											2016/2017
ሐምሌ 2008	139.8	129.9	190.8	139.4	106.8	249.0	245.1	123.7	183.4	198.8	July 2016
ክለሌ 2008	141.6	134.1	177.3	157.5	105.5	226.8	182.9	127.1	172.4	217.7	August "
መስከረም 2009	145.5	135.6	185.3	166.9	103.2	220.4	203.7	129.8	177.4	214.3	September "
ጥቅምት 2009	146.0	133.8	178.2	169.9	106.0	206.5	189.9	139.9	167.8	218.8	October "
ህዳር 2009	150.9	131.7	185.8	186.8	106.2	212.4	174.3	155.2	182.8	226.3	November "
ታህሳስ 2009	149.6	131.7	175.6	175.1	115.5	213.5	166.6	160.8	179.2	209.8	December "
ጥር 2009	152.4	137.7	171.6	177.9	117.7	216.8	159.6	159.7	177.8	222.6	January 2017
የካቲት 2009	156.3	136.5	173.7	190.6	133.8	247.0	170.7	160.1	189.2	223.7	February "
መጋቢት 2009	161.2	141.4	175.5	202.7	136.3	241.9	183.0	159.0	195.1	220.7	February "

ሠንጠረዥ 13ለ1 ጠቅላላ የምግብ የሽግግር ዋጋ መመዘኛ ኢንዱክስ በሥሩ የተካተቱ ክፍሎች ስትግራይ ክልላዊ መገንኘት
 ታህሳስ 2004 =100

Table 13b: Consumer Price Index of Total Food and Its Components for Tigray Regional State
 December 2011 = 100

ወርና ዓመት	የምግብ ክፍሎች Food Consumer Price Index Components										
	ምግብና አልኮሎል ያልሆኑ መጠጦች	ዳቦና እህል	ሥጋ	ወተት ዓይብና ዕንቁላል	ዘይትና ትባቶች	ፍራፍሬ	አትክልትና ጥራጥሬ	ስኳር ግርና ቸኩሊት	ሌሎች ምግቦች	አልኮሎል ያልሆኑ መጠጦች	Month an Year
Month an Year	Food and Non- Alcoholic Beverages	Bread and Cereals	Meat (ND)	Milk, cheese and eggs (ND)	Oils and fats (ND)	Fruit (ND)	Vegetables	Sugar, jam, honey, chocolate.	Food products n.e.c. (ND)	Non-Alcoholic Beverages and Coffee	Month an Year
ታህሳስ 2004	100.0	100.0	100.0	100.0	100.0	100.0	100.0	100.0	100.0	100.0	December 2006
ሐምሌ 2004 - ሰኔ 2005	121.3	133.6	135.3	129.1	108.0	113.3	99.6	101.1	130.6	79.3	July 2012 - June 2013
ሐምሌ 2005 - ሰኔ 2006	130.2	146.8	151.2	138.6	110.1	72.6	108.3	99.3	130.6	77.2	July 2013 - June 2014
ሐምሌ 2006 - ሰኔ 2007	129.5	133.6	150.7	148.0	114.9	96.2	122.4	99.3	138.8	91.7	July 2014 - June 2015
ሐምሌ 2007 - ሰኔ 2008	145.6	143.7	155.9	158.0	117.8	117.6	155.6	109.7	195.1	82.2	July 2015 - June 2016
2008											2015/2016
ጥር 2008	148.2	146.7	159.9	161.0	117.7	125.7	155.6	100.1	205.2	79.4	January 2016
የካቲት 2008	145.2	143.7	154.2	164.7	112.9	125.7	148.0	118.6	207.0	79.3	February "
መጋቢት 2008	145.9	144.3	151.2	153.0	113.2	125.7	157.7	118.6	200.3	79.7	March "
ግንቦት 2008	146.1	145.3	147.4	133.9	112.9	125.7	159.9	124.1	201.7	80.2	April "
ግንቦት 2008	149.1	147.0	169.1	157.4	116.3	125.7	157.5	124.2	196.0	78.0	May "
ሰኔ 2008	155.1	152.4	169.5	163.1	117.8	125.7	178.5	122.5	196.5	77.1	June "
2009											2016/2017
ሐምሌ 2008	154.6	151.5	173.7	164.4	118.7	125.7	174.0	125.5	194.7	78.4	July 2016
ክሳራ 2008	158.8	163.5	172.0	159.6	116.4	125.7	168.5	120.1	201.4	77.5	August "
መስከረም 2009	166.3	164.4	189.3	173.8	117.1	125.7	184.6	130.3	215.5	80.9	September "
ጥቅምት 2009	159.6	162.0	178.6	176.0	117.1	125.7	157.3	127.3	218.8	79.9	October "
ህዳር 2009	159.2	159.5	180.7	170.9	120.4	125.7	151.5	129.3	225.5	87.6	November "
ታህሳስ 2009	151.8	145.3	170.9	158.9	118.2	125.7	149.5	133.1	230.4	87.6	December "
ጥር 2009	149.9	142.9	180.6	175.0	114.1	125.7	142.0	122.0	219.2	92.0	January 2017
የካቲት 2009	154.3	149.6	173.5	170.8	126.6	125.7	141.6	126.8	235.4	95.0	February "
መጋቢት 2009	157.4	152.7	174.6	142.4	129.1	125.7	151.6	127.8	238.3	95.1	February "