

## ክፍል መ. ስለግብርና

ሠንጠረዥ መ.1 ከ2002-2004 ዓ.ም መረጃ ለዋና ዋና ሰብሎች የታረሰው መሬት ስፋት የምርት ውጤትና ጠቅላላ ምርት መጠን በመኸር ወቅት ለማዘጋጀት የተቻለው የማዕከላዊ ስታቲስቲክስ ኤጀንሲ ካካሄደው ጥናት በተገኘው መረጃ ነው ።

የምርት ውጤት መጠን እና የታረሰው መሬት ስፋት የሚያሳየው በዋናው መኸር ወቅት በግል ገበሬዎች የተገኘውን ምርትና የታረሰውን መሬት ብቻ ነው ።

ሠንጠረዥ መ.2 ከ2002 - 2004 ዓ.ም በስኳር ፋብሪካዎች በሸንኮራ አገዳ የተያዘ መሬት ስፋትና የተመረተ ምርት መጠን መረጃ ነው። መረጃው የሚያመለክተው የፊንጫና የመተሐራ ስኳር ፋብሪካዎችን ብቻ ነው።

ሠንጠረዥ መ.3 ከ1996-2004 ዓ.ም ለከብት ሕክምና የተቀመመ መድሃኒት መጠን ነው ።

ሠንጠረዥ መ.4-መ.6 ከ2002-2004 ዓ.ም. የዳልጋ ከብቶች የሌሎች ከብቶች ዶሮዎችና የንብ ቀፎ ብዛት መረጃ የተገኘው የማዕከላዊ ስታቲስቲክስ ኤጀንሲ ከ2000-2004 ዓ.ም. ካካሄደው ጥናት ነው። መረጃ የቀረበው የግል ገበሬዎች የሚመለከት ብቻ ነው ።

ሠንጠረዥ መ.7 ከ2002/2003 - 2004/2005 ዓ.ም ድረስ በኢትዮጵያ ግብርና ምርት ማሳደጊያ አቅራቢ ድርጅት በኩል የተሸጠ የማዳበሪያ መጠንን ነው።

ሠንጠረዥ መ.8-መ.10 በኢትዮጵያ በዋናው መኸር ወቅት በግብርና ሥራ የተሰማሩ ጠቅላላ ባለይዞታ ብዛት፣ በሰብል የተያዘ መሬት ጠቅላላ ስፋትና የአንድ ባለይዞታ በሰብል የተያዘ መሬት ስፋት ስርጭት በይዞታ መጠን የ2002 - 2004 ዓ.ም. የሚያሳይ ነው ።

ሠንጠረዥ መ.11-መ.13 በኢትዮጵያ በዋናው መኸር ወቅት በግብርና ሥራ የተሰማሩ ቤተሰቦች፣ ባለይዞታዎች፣ የቤተሰብ አባላት ብዛት እና ስርጭት አማካኝ አንድ ባለይዞታ በይዞታ መጠን ከ2002 - 2004 ዓ.ም. የሚያሳይ ነው ።

ሠንጠረዥ መ.14-መ.16 በኢትዮጵያ በዋናው መኸር ወቅት በግብርና ሥራ የተሰማሩ ቤተሰቦች፣ ጠቅላላ ብዛት በይዞታ መጠንና የቤተሰብ አባላት ብዛት ከ2002 - 2004 ዓ.ም. የሚያሳይ ነው ።

ሠንጠረዥ መ.17-መ.19 በኢትዮጵያ በዋናው መኸር ወቅት በግብርና ሥራ የተሰማሩ ቤተሰቦች፣ ጠቅላላ ብዛት በይዞታ መጠንና የቤተሰብ አባላት ብዛት ከ2002 - 2004 ዓ.ም. የሚያሳይ ነው ።

ሠንጠረዥ መ.20-መ.22 በኢትዮጵያ በዋናው መኸር ወቅት በግብርና ሥራ የተሰማሩ ጠቅላላ ባለይዞታዎች ብዛት በጾታና በተሰማሩበት የግብርና አይነት ከ2002 - 2004 ዓ.ም. የሚያሳይ ነው ።

ሠንጠረዥ መ.23-መ.25 በኢትዮጵያ በዋናው መኸር ወቅት በስብል የተያዘ የመሬት ስፋትና ሥርጭት በመቶኛ፣ በስብል አይነትና በይዞታ መጠን ከ2002 - 2004 ዓ.ም. የሚያሳይ ነው።

ሠንጠረዥ መ.26-መ.28 በኢትዮጵያ በዋናው መኸር ወቅት በግብርና ስራ የተሰማሩ፣ ጠቅላላ ባለይዞታዎች ብዛት በስብል የተያዘ መሬት ስፋትና አማካይ የአንድ ባለይዞታ የይዞታ መጠን ከ2002 - 2004 ዓ.ም. የሚያሳይ ነው ።

ሠንጠረዥ መ.29-መ.31 በኢትዮጵያ በዋናው መኸር ወቅት በጊዜያዊ ስብሎች የተያዘ የመሬት ስፋትና ስርጭት በመቶኛ በስብል አይነትና በይዞታ መጠን ከ2002 - 2004 ዓ.ም. የሚያሳይ ነው ።

ሠንጠረዥ መ.32-መ.34 በኢትዮጵያ በዋናው መኸር ወቅት በምርጥ ዘር በመስኖ ዘዴ በፀረ-ተባይ መድሃኒት እና ማዳበሪያ በመጠቀም የታረሰ ጠቅላላ መሬት ስፋት በሄክታር/ለግል ባለይዞታዎች ብቻ ከ2002 - 2004 ዓ.ም. የሚያሳይ ነው ።

ሠንጠረዥ መ.35-መ.37 በኢትዮጵያ በዋናው መኸር ወቅት ማዳበሪያ የተደረገበት መሬት ስፋት በማዳበሪያ አይነት ለግል ባለይዞታዎች ከ2002 - 2004 ዓ.ም. የሚያሳይ ነው ።

ሠንጠረዥ መ.38-መ.40 በኢትዮጵያ በዋናው መኸር ወቅት በጥቅም ላይ የዋለ የማዳበሪያ መጠንና ዓይነት በግል ባለይዞታዎች ከ2002 - 2004 ዓ.ም. የሚያሳይ ነው።

ማስታወሻ ሠንጠረዥመ1 እና መ4-መ40 የቀረቡት መረጃዎች በሙሉ ለግል ባለይዞታዎች ብቻ ነው ።

## **SECTION E D. AGRICULTURE**

Table D.1. estimates on area yield and production of major crops for 2009/2010 -2010/11 main seasons are based on the results of the crop production surveys conducted by Central Statistical Agency. The production and area figures are for private peasant holdings for main seasons.

Table D.2 refers to *Fincha, Metehara and Wonji/Showa* sugar factories total crop area covered by sugar cane and total production in tones.

Table D.3 refers to vaccine production 2003/2004- 2011/12.

Table D.4 – D.6. Data on the number of cattle, other livestock poultry and beehives are based on the results of the survey conducted by the Central Statistical Agency for 2009/10-2011/12. The figures given are for private peasant holdings only.

Table D.7 refers to sell of fertilizers in Regions by Ethiopian Agricultural Inputs Enterprise for the period 2009/2010 - 2010/2011.

Tables D.8 – D.10 refers to data on the distribution of total number of Agricultural Households, Holders, Total Crop Area and Crop Area Per Holder by Size of Holding and Size of Households Ethiopia (Main season) , 2009/10 - 2011/12.

Tables D.11 – D.13 refers to data on the distribution of total number of Agricultural Households, Holders, Total Members and Average Household Size by Size of Holding in Ethiopia (Main season) , 2009/10 - 2011/12.

Tables D.14 – D.16 refers to data on the distribution of total number of Agricultural Households by Size of Holding and Size of Household in Ethiopia (Main season) , 2009/10- 2011/12.

Tables D.17-D.19 Data on number of agricultural holders by age of holder, and type of holding in Ethiopia (Main season), 2009/10- 2011/12.

Tables D.20-D.22 Data on number of agricultural holders by sex of holder, and type of Holding in Ethiopia (Main season), 2009/10- 2011/12.

Tables D.23-D25 refers to estimates of total crop area and their percentage distribution by crop type and size of holding in Ethiopia (Main season), 2009/10- 2011/12.

Tables D.26-D.28 refers to data on number of agricultural holders, total crop area and average area per holder by crop type and size of holding in Ethiopia (Main season), 2009/10- 2011/12.

Tables D.29-D31 refers to Estimates of crop area under temporary crop by size of holding in Ethiopia ( Main season), 2009/10- 2011/12.

Tables D.32-D.34. refers to estimates of improved seed. , irrigation, pesticide and fertilizer applied area and their percentage distribution by crop for main season of private holdings in Ethiopia, 2009/10- 2011/12.

Tables D.35 – D.37. refers to estimates of fertilizer applied area by type of fertilizer for main season (*Meher*) crops of private holdings in Ethiopia, 2009/10- 2011/12.

Tables D.38 – D.39. refers to estimates of quantity of commercial fertilizer applied by type of fertilizer for main season crops of private holdings in Ethiopia, 2009/10- 2011/12.

**Note:-**

**All data on Tables D.1 and from D.4 – D.40 are for Private Peasant Holdings only.**

Created with

በኢትዮጵያ\*\* የታረሰ መሬት ስፋትና የዋና ዋና ሰብሎች ምርት ግምት (መኸር 2002 - 2004 ዓ.ም)

AREA UNDER CULTIVATION, YIELD AND PRODUCTION OF MAJOR CROPS FOR 2008/09- 2010/11 MAIN (MEHER) SEASON ETHIOPIA\*\*

ሠንጠረዥ መ.1.1

TABLE D.1.1

	2009/10(2002)	2010/11(2003)	2011/12(2004)						
<b>Cereals</b>	<b>155342279.9</b>	<b>177613365.8</b>	<b>188,099,616.95</b>						
Barley	17,504,436.37	17,033,465.36	15,852,869.21						
Maize	38,971,630.66	49,861,254.95	60,694,130.14						
Sorghum	29,712,655.24	39,598,973.86	39,512,942.36						
Finger Millet	5,241,910.54	6,348,257.88	6,518,509.00						
Teff	31,793,742.81	34,834,826.26	34,976,894.64						
Wheat	30,756,435.71	28,556,817.43	29,163,336.88						
Oats	330,191.19	475,650.57	494,749.24						
Rice	1,031,277.37	904,119.53	886,185.47						
<b>Oil Seeds</b>	<b>6,436,143.98</b>	<b>6,339,987.49</b>	<b>7,308,800.29</b>						
Linseed (Flax)	1,506,285.24	654,205.76	1,127,607.00						
Neug	1,578,466.66	1,448,474.82	1,863,205.76						
Sesame	2,605,343.05	3,277,409.22	2,447,833.59						
Ground Nuts	464,248.46	716,068.37	1,034,787.88						
Sufflower	55,523.82	50,667.88	88,702.51						
Rapeseed	226,276.75	193,161.43	746,663.56						
<b>Pulses</b>	<b>18,980,472.57</b>	<b>19,531,935.01</b>	<b>23,162,012.43</b>						
Chick-Peas	2,846,397.78	3,228,388.27	4,002,077.19						
Field Peas	2,358,721.47	2,570,314.09	2,632,663.87						
Haricot Beans	3,628,903.15	3,402,795.18	3,878,023.01						
Faba Beans	6,108,452.94	6,977,983.87	7,147,960.23						
Lentils	1,237,771.88	809,517.33	1,280,087.87						
Grass Pea	2,040,196.10	2,009,485.58	3,055,753.10						
Soya Beans	*	158,244.22	358,802.94						
Fenugreek	271,220.46	179,052.29	362,939.17						
Gibto	416,759.21	196,154.18	443,705.05						
Sugar Cane	6,724,393.51	11,877,738.33	10,335,863.41						

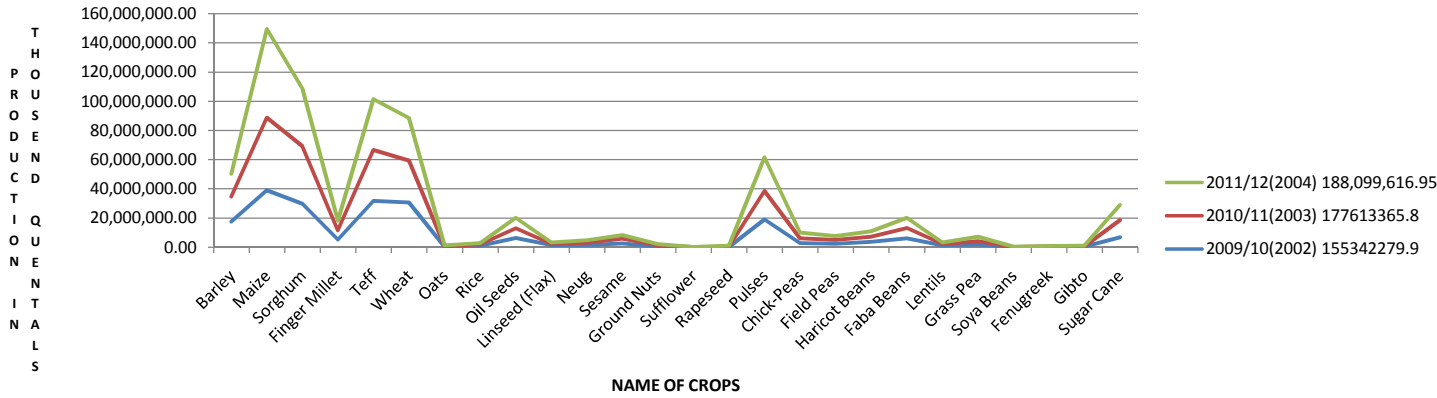
	AREA (ha)	YIELD (qt/ha)	PRODUCTION (qt)						

አርብክ አደር አካባቢዎችን አይጨምርም  
\*\* Excluding Nomadic Areas

ማስታወሻ:- የግል ጠሬዎች ይዞታን ብቻ ነው  
NOTE: Data is for private holdings only

- መረጃ አልተገኘም  
- Data not available.

Fig:1.1 A PRODUCTION OF MAJOR CROPS FOR MAIN(MEHER)SEASON 2011/12(2004E.C)



ሠንጠረዥ መ.1 በኢትዮጵያ\*\* የታረሰ መሬት ስፋትና የዋና ዋና ሰብሎች ምርት ግምት (መኸር 2002 - 2004 ዓ.ም)

Table D.1 Area Under Cultivation, Yield and Production of Major Crops for 2009/10- 2011/12 Main ( Meher ) Season Ethiopia\*\*

የሰብል ዓይነት	2002 ዓ.ም			2003 ዓ.ም			2004 ዓ.ም			
	የታረሰው መሬት ስፋት (በሄክታር)	የአያኝ/ንዳኝ/ሄ/ር ምርት (በኩንታል)	ጠቅላላ ምርት (በኩንታል)	የታረሰው መሬት ስፋት (በሄክታር)	የአያኝ/ንዳኝ/ሄ/ር ምርት (በኩንታል)	ጠቅላላ ምርት (በኩንታል)	የታረሰው መሬት ስፋት (በሄክታር)	የአያኝ/ንዳኝ/ሄ/ር ምርት (በኩንታል)	ጠቅላላ ምርት (በኩንታል)	
<b>የብርዕና አገዳ እህሎች</b>	<b>9,233,025.14</b>		<b>155,342,279.88</b>	<b>9,690,733.96</b>		<b>177,613,365.84</b>	<b>9,588,923.71</b>		<b>188,099,616.95</b>	<b>Cereals</b>
ገብስ	1,129,112.36	15.5	17,504,436.37	1,046,555.30	16.28	17,033,465.36	948,107.43	16.72	15,852,869.21	Barley
በቆሎ	1,772,253.11	21.99	38,971,630.66	1,963,179.51	25.4	49,861,254.95	2,054,723.69	29.54	60,694,130.14	Maize
ማሽላ	1,618,677.24	18.36	29,712,655.24	1,897,733.98	20.87	39,598,973.86	1,923,717.49	20.54	39,512,942.36	Sorghum
ዳጉላ	368,999.15	14.21	5,241,910.54	408,110.31	15.56	6,348,257.88	432,561.00	15.07	6,518,509.00	Finger Millet
ጤፍ	2,588,661.14	12.28	31,793,742.81	2,761,190.05	12.62	34,834,826.26	2,731,111.67	12.81	34,976,894.64	Teff
ስንዴ	1,683,565.26	18.27	30,756,435.71	1,553,239.89	18.39	28,556,817.43	1,437,484.73	20.29	29,163,336.88	Wheat
አጃ	24,017.99	13.75	330,191.19	30,858.76	15.41	475,650.57	30,568.39	16.18	494,749.24	Oats
ሩዝ	47,738.88	21.6	1,031,277.37	29,866.16	30.27	904,119.53	30,649.30	28.91	886,185.47	Rice
<b>የቅባት እህሎች</b>	<b>780,915.89</b>		<b>6,436,143.98</b>	<b>774,529.55</b>		<b>6,339,987.49</b>	<b>880,870.81</b>		<b>7,308,800.29</b>	<b>Oil Seeds</b>
የተልባ ፍሬ	140,800.92	10.7	1,506,285.24	73,687.70	8.88	654,205.76	116,541.40	9.68	1,127,607.00	Linseed(Flax)
ነጎጉግ	256,794.20	6.15	1,578,466.66	247,611.17	5.85	1,448,474.82	309,010.72	6.03	1,863,205.76	Neug
ሰሊጥ	315,842.80	8.25	2,605,343.05	384,682.79	8.52	3,277,409.22	337,505.41	7.25	2,447,833.59	Sesame
ለውዝ	41,578.79	11.17	464,248.46	49,602.97	14.44	716,068.37	64,476.52	16.05	1,034,787.88	Ground Nuts
ሱፍ	4,652.53	11.93	55,523.82	5,489.79	9.23	50,667.88	8,168.96	10.86	88,702.51	Sufflower
ጎመን ዘር	21,246.65	10.65	226,276.75	13,455.12	14.36	193,161.43	45,167.81	16.53	746,663.56	Rapeseed
<b>ጥሬጥሬዎች</b>	<b>1,489,308.45</b>		<b>18,980,472.57</b>	<b>1,357,522.68</b>		<b>19,531,935.01</b>	<b>1,616,809.37</b>		<b>23,162,012.43</b>	<b>Pulses</b>
ሽምብራ	213,187.14	13.35	2,846,397.78	208,388.62	15.49	3,228,388.27	231,298.54	17.30	4,002,077.19	Chick-peas
አተር	226,532.57	10.41	2,358,721.47	203,990.64	12.6	2,570,314.09	212,890.15	12.37	2,632,663.87	Field Peas
አደንጓሬ	244,012.88	14.87	3,628,903.15	237,366.39	14.34	3,402,795.18	331,708.15	11.69	3,878,023.01	Haricot Beans
ባቄላ	512,067.20	11.93	6,108,452.94	459,183.51	15.2	6,977,983.87	457,559.94	15.62	7,147,960.23	Faba Beans
ምስር	105,956.04	11.68	1,237,771.88	77,334.22	10.47	809,517.33	109,895.27	11.65	1,280,087.87	Lentils
ጓያ	135,657.67	15.04	2,040,196.10	131,043.99	15.33	2,009,485.58	179,866.13	16.99	3,055,753.10	Grass Pea
ቦላቄ	*	*	*	11,261.12	14.05	158,244.22	19,397.16	18.50	358,802.94	Soya Beans
አብሽ	21,183.02	12.8	271,220.46	14,670.04	12.21	179,052.29	39,964.58	9.08	362,939.17	Fenugreek
ግብጦ	25,033.25	16.65	416,759.21	14,284.15	13.73	196,154.18	34,229.45	12.96	443,705.05	Gibto
<b>ሌሎች አዝርዕት</b>										<b>Other Crops</b>
ሽንኩራ አገዳ	18,908.42	355.63	6,724,393.51	23,341.51	508.87	11,877,738.33	22,119.93	467.26	10,335,863.41	Sugar Cane
	Area (ha)	Yield (qt/ha)	Production (qt)	Area (ha)	Yield (qt/ha)	Production (qt)	Area (ha)	Yield (qt/ha)	Production (qt)	Crop Type
	2009/2010			2010/2011			2011/2012			



ሠንጠረዥ መ.2 የስኬር ፋብሪካዎች በሸንኮራ አገዳ የተያዘ የመሬት ስፋትና የተመረተ ምርት መጠን በቶን: 2003-2004 ዓ.ም

Table D.2 Total Average and Production of Sugar Cane by Sugar Industries, 2010/11 -2011/12

የፋብሪካው ስም	የሸንኮራ አገዳ የተያዘው የመሬት ስፋት በሐክባር		የተመረተው የአገዳ ምርት መጠን በቶን		Factory Name
	Area Covered by Sugarcane		Production in Ton		
	2003	2004	2003	2004	
መተሐራ ስኳር ፋብሪካ	10,231	10,228	1,001,400	982,966	Methara Sugar Factory
ፊንጫላ ስኳር ፋብሪካ	14,311.46	15,897	877,940	867,014	Fincha Sugar Factory
ወንጂ/ሸዋ ስኳር ፋብሪካ	7,000	10,000	640,790.7	621,037.2	Wonji/Shoa Sugar Factory
ድምር	31,542.46	36,125	2,520,130.7	2,471,017.2	Total
	2010/11	2011/12	2010/11	2011/12	Year



ሠንጠረዥ መ.3 በብሔራዊ የእንስሳት ጤና ጥበቃ ኢንስቲትዩት የእንስሳትን በሽታዎች ለመከላከል ባለፉት 10 ዓመታት የተመረቱ የክትባት ምርቶች በሚሊዮን ዶዝ

Table D.3 Vaccines Produced at NVI to Prevent Animal Diseases During the Past Ten Years Million Dozes

የተመረተ የክትባት ዓይነት	የተመረተበት ዓመት ምህረት									Type of Vaccine
	1995	1996	1997	1998	1999	2000	2001	2002	2003	
የዳልጋ ከብት ሣምባ	1,209,400	2,022,000	2,338,100	5,731,500	9,641,400	4,234,900	1,661,600	5,201,400	18,076,500	CBPP
የበግና የፍየል ሣምባ	65,200	183,000	341,600	362,300	419,400	315,400	59,100	686,912	656'200	CCPP
አባ ሰንጋ	5,511,200	5,716,600	5,773,200	863,900	6,629,700	8,027,800	2,013,100	9,171,100	7,758,300	Anthrax
አባ ጎርባ	4,668,250	4,951,050	4,266,950	5,728,650	7,365,150	6,421,450	718,250	6,458,450	5,736,350	Black leg
የዳልጋ ከብት ጎርሮሣ	4,473,350	4,066,450	3,443,000	5,135,450	5,424,900	2,526,350	1,246,300	5,124,200	4,901,800	B.Pasteurellosis
የበግና የፍየል ጎርሮሣ	3,400,250	2,791,400	3,888,550	5,485,500	6,008,400	3,299,700	856,800	6,241,900	6,089,550	O. Pasteurellosis
የዶሮ ታፎይድ	-	560,900	782,600	-	-	-	1,426,500	839,700	1'843'000	Fowl Typhoid
የዳልጋ ከብት ጉርብርብ	2,317,250	2,561,800	2,118,910	3,195,600	6,222,470	8,755,260	1,856,600	5,081,610	8'366'650	LSD
የበግ ፈንጣጣ	1,411,600	2,092,800	1,299,500	3,185,200	4,008,255	4,945,220	1,525,500	10,066,340	9,800,000	sheep pox
የፍየል የደስታ በሽታ	219,711	233'555	6,688,425	2,744,785	2,933,030	4,944,650	4,303,400	17,953,850	18'691'450	PPR
የአፍተግር	46,535	35,264	55,400	57,715	75,010	81,190	45'505	348,370	55'405	FMD
የአፍራካ የጋማ ከብት	316,600	713,880	566,100	1,097,660	1,122,200	1,168,970	1'128'600	1,206,660	3,622,150	AHS
ኒውካስትል ኮንቬንሽናል	5,160,900	-	6,440,950	8,349,100	-	2,106,600	2'069'750	2,460,940	7'039'000	NCD
ኒውካስል ቴርሞስክላል	1,185,750	-	1,198,010	2,247,550	-	36,809,580	4,699,900	3,007,213	25,703,000	NCD
ኒውካስል ኢንክትቪዩስ	190,200	235,700	487,600	81'800	-	-	-	-	-	NCD
የዶሮ ፈንጣጣ	-	310,876	1,048,120	1,169,850	-	447,010	311'850	586,210	1,232,000	Fowl Pox
ጉምቦሮ	-	-	-	-	-	-	-	2'100'900	2'981'250	

ሠንጠረዥ መ.4 የዳሊጋ ከብት፣ በግና ፍየል ብዛት ግምት በክልል \*\*2002 - 2004 ዓ.ም.

( የግል ገበሬዎች ይዞታ በገጠር ብቻ )

Table D.4 Estimated Number of Cattle, Sheep & Goat by Region \*\* 2009/2010 - 2011/2012

( Private Peasant Holdings for Rural Only )

በሺህ				('000)					
ክልል	2002			2003			2004		
	የዳሊጋ ከብት	በግ	ፍየል	የዳሊጋ ከብት	በግ	ፍየል	የዳሊጋ ከብት	በግ	ፍየል
ትግራይ	3,243	1,150		3,630.957	1,255.403	3,049.486	3,539,395	1,121,537	2,874,520
አፋር	550	604		899.078	990.378	1,774.875	910,797	1,042,163	1,713,660
አማራ	12,747	8,597		13,371.486	8,679.879	176.309	13,354,797	8,227,862	5,189,432
ኦሮሚያ	22,475	9,453		22,958.489	8,815.290	7,531.445	22,481,530	8,618,970	7,226,944
ሶማሌ	591	1,067		610.514	1,054.287	1,411.481	503,821	1,134,856	1,365,265
ቤንሻንጉል ጉሙዝ	422	89		502.857	105.724	446.484	552,106	98,058	454,460
ደ/ብ/ብ/ሀ	10,543	4,935		11,060.053	4,497.169	3,086.531	10,437,409	3,865,819	3,506,210
ጋምቤላ	221	26		253.389	39.564	83.897	251,367	50,602	79,623
ሀረሪ	45	5		52.245	5.631	45.256	48,331	5,122	41,964
አዲስ አበባ	0	0		0	0	0	0	0	0
ድሬዳዋ	47	55		43.128	65.678	181.181	49,465	56,397	161,027
ድምር	50,884	25,980		53,382.196	25,509.003	22,703.048	52,129,017	24,221,384	22,613,105
	Cattle	Sheep	Goat	Cattle	Sheep	Goat	Cattle	Sheep	Goat
	2008/9			2010/11					2011/12

\* These estimates could not be reported in this table because of high coefficient of variation (i.e. less reliable). However, they are consolidated in the total estimates.

\*\* መረጃው የአርብቶ አደር አካባቢችን አይጨምርም

ሠንጠረዥ መ.5 የፈረስ፣ በቅሎና አህያ ብዛት ግምት በክልል \*\* 2002 - 2004 ዓ.ም.

( የግል ገበሬዎች ይዞታ በገጠር ብቻ )

Table D.5 Estimated Number of Horse, Mule & Donkey by Region \*\* 2009/10/ - 2011/2012

( Private Peasant Holdings for Rural Only)

በሺህ

('000)

ክልል	2002 ዓ.ም			2003 ዓ.ም			2004 ዓ.ም		
	ፈረስ	በቅሎ	አህያ	ፈረስ	በቅሎ	አህያ	ፈረስ	በቅሎ	አህያ
ትግራይ	*	0	456	2.108	4.229	568.121	3,974	3,752	578,273
አፋር	-	-	37	*	*	65.951	*729	*	57,796
አማራ	353	128	2,108	396.231	120.459	2,241.741	432,209	136,292	2,309,433
ኦሮሚያ	1,299	175	2,495	1,176.301	181.381	2,617.107	1,143,865	150,893	2,776,094
ሶማሌ	-	-	118	*	*	100.367	*	*	102,971
ቤንሻንጉል ጉሙዝ	*	0.758	53	-	2.624	64.639	*	1,774	67,102
ደ/ብ/ብ/ሀ	336	57	425	451.799	75.331	526.621	376,402	74,131	521,257
ጋምቤላ	0.375	*	*	-	-	-	729	*	*
ሀረሪ	-	-	0	-	-	9.679	*	*	9,170
አዲስ አበባ	-	-	-	-	-	*	*	*	*
ድሬዳዋ	-	-	0	-	-	14.992	*	*	102,971
ድምር	1,988	360.59	5,691.73	2026.439	384.024	6,209.218	1,961,949	368,781	6,438,435
	Horse	Mule	Donkey	Horse	Mule	Donkey	Horse	Mule	Donkey
		2009/10			2010/11			20011/12	

\* These estimates could not be reported in this table because of high coefficient of variation (i.e. less reliable). However, they are consolidated in the total estimates.

\*\*መረጃው የአርብቶ አደር አካባቢችን አይጨምርም

\*\* Excluding pastoralists' areas.

**ሠንጠረዥ መ.6 የግመል፡ ዶሮና ንብ የያዙ ቀፎች ብዛት ግምት በክልል 2002-2004ዓ.ም**  
**( የግል ገበሬዎች ይዞታ በገጠር ብቻ )**

**Table D.6 Estimated Number Of camel, Poultry & Beehive by Region \*\*2008/2009 -2011/2012**  
**( Private Peasant Holdings for Rural Only )**

በሺህ ('000)

ክልል	2002			2003			2004		
	ግመል	ዶሮ	የንብ ቀፎ	ግመል	ዶሮ	የንብ ቀፎ	ግመል	ዶሮ	የንብ ቀፎ
ትግራይ	32	4,266	196	34.205	4,308.595	213.133	3,752	5,003,126	219,036
አፋር	218	29	*	379.228	67.319	*	*	57,993	*
አማራ	35	12,740	822	51.472	14,048.486	911.986	136,292	14,116,725	965,293
ኦሮሚያ	257	15,337	2,486	326.069	18,762.281	2,761.204	150,893	16,345,099	2,738,127
ሶማሌ	255	56	0	301.323	106.114	0.620	*	113,004	*
ቤንሻንጉል ጉሙዝ	-	821	233	-	1,149.069	259.005	1,774	1,140,816	230,241
ደ/ብ/ብ/ህ	-	8,504	775	-	10,407.807	922.420	74,131	7,690,931	779,235
ጋምቤላ	-	210	83	-	303.019	59.327	*	301,735	58,402
ሀረሪ	*	39	0.731	-	53.277	1.043	*	43,235	928
አዲስ አበባ	NA	NA	NA	NA	NA	NA	NA	NA	NA
ድሬዳዋ	8	51	0.534	6.425	80.963	0.897	*	80,345	756
<b>ድምር</b>	805	42,053	4,596	1,098.722	49,286.930	512.963	368,781	44,893,009	4,993,815
	Camel	Poultry	Beehive	Camel	Poultry	Beehive	Camel	Poultry	Beehive
	<b>2009/2010</b>			<b>2010/2011</b>			<b>2011/2012</b>		

\* These estimates could not be reported in this table because of high coefficient of variation (i.e. less reliable). However, they are consolidated in the total estimates.

**መረጃው የአርብቶ አደር አካባቢችን አይጨምርም**

\*\* Excluding Pastoralist Areas.

ሠንጠረዥ መ.7

የማዳበሪያ ሽያጭ በክልል

Table D.7

Sell of Fertilizers in Regions

	2002/2003			2003/2004			2004/2005			Region
	ዳኝ	ዩሪያ	ድምር	ዳኝ	ዩሪያ	ድምር	ዳኝ	ዩሪያ	ድምር	
ትግራይ	209,450	147,550	357,000				213,386	157,152.50	370,538.5	<i>Tigray</i>
አማራ	42,810	49,890	92,700	7,632	10,715	18,347	15,857	22,752.5	38,609.5	<i>Amhara</i>
ኦሮሚያ	30280	143,990	174,270	174,270	66,956	90,243	25,111.5	22,728	47,839.5	<i>Oromia</i>
ደቡብ							1,472	645	2,117	<i>S.N.N.P</i>
ቤንሻንጉል										<i>Benshangule</i>
ሀረሪ										<i>Harari</i>
አዲስ አበባ	136,890	189,270	326,160	789,865	767,614	1,557,479	108,597.5	118,987	227,584.5	<i>Addis Ababa</i>
ሶማሌ	2,790	1,642	4,432							<i>Somali</i>
ድረዳዋ							1,492	21,840	23,332	<i>Dere Dawa</i>
ሌሎች										<i>Others</i>
ድምር	422,220	532,342	954,562	820,784	845,285	1,666,069	365,916	344,105	710,021	<b>Total</b>

\*2003/2004 ለትግራይና ለደቡብ ክልል ሽያጭ የተካሄደው በዋናው መ/ቤት ስለሆነ አዲስ አበባ ሽያጭ ላይ ተካቷል፡፡

ሠንጠረዥ መ.8 በኢትዮጵያ\*\* በዋናው መዝና የሰብል ምርት ዘመን በግብርና ሥራ የተሰማሩ ጠቅላላ ባለይዞታ ብዛት፣ በሰብል የተያዘ መሬት ጠቅላላ ስፋት፣ የአንድ ባለይዞታ በሰብል የተያዘ መሬት ስፋትና ሥርጭት በይዞታ ስፋት መጠን 2002 ዓ.ም

Table D.8 Distribution of Total Number of Holders, Total Crop Area and Crop Area Per Holder by Size of Holding, Main Season 2009/2010 ETHIOPIA\* \*

የባለይዞታ ብዛትና የመሬት ስፋት መጠን	የይዞታ መጠን (በኬንታር)								
	ከ0.10 በታች	0.10- 0.50	0.51-1.00	1.01-2.00	2.01-5.00	5.01-10.00	ከ10.00 በላይ	ጠቅላላ	
በግብርና ሥራ የተሰማሩ የባለይዞታ ብዛት	970,466	3,207,094	3,209,759	3,540,914	2,129,048	180,820	14,537	13,252,639	Number Of Agricultural Holders
የባለይዞታ ብዛት ከምዕራብ መቶኛ	7.32	24.20	24.22	26.72	16.07	1.36	0.11	100.00	Cummulative Percent of Holders
በሰብል የተያዘ ማሣ ጠቅላላ ስፋት	28,118	798,597	1,970,514	4,246,116	4,933,811	840,787	135,692	12,953,636	Total Crop Area (ha)
የመሬት ስፋት ከምዕራብ መቶኛ	0.22	6.17	15.21	32.78	38.09	6.49	1.05	100.00	Cummulative Percent of Total Crop Area
አማካይ የአንድ ባለይዞታ የማሣ ስፋት (በኬንታር)	0.04	0.30	0.73	1.43	2.87	6.30	12.75	1.20	Average Crop Area Per Holder (ha)
	Under 0.10	0.10- 0.50	0.51-1.00	1.01-2.00	2.01-5.00	5.01-10.00	10.01+	Total	N.o of Holders and Size of Holding
	Size of Holding(Hectares)								

ሠንጠረዥ መ.9 በኢትዮጵያ\*\* በዋናው መኸር የሰብል ምርት ዘመን በግብርና ሥራ የተሰማሩ ጠቅላላ ባለይዞታ ብዛት፣ በሰብል የተያዘ መሬት ጠቅላላ ስፋት፣ የአንድ ባለይዞታ በሰብል የተያዘ መሬት ስፋትና ሥርጭት በይዞታ ስፋት መጠን 2003 ዓ.ም

Table D.9 Distribution of Total Number of Holders, Total Crop Area and Crop Area Per Holder by Size of Holding, Main Season 2010/2011 ETHIOPIA\* \*

የባለይዘታ ብዛትና የመሬት ስፋት መጠን	የይዘታ መጠን (በሄክታር)								
	ከ0.10 በታች	0.10- 0.50	0.51-1.00	1.01-2.00	2.01-5.00	5.01-10.00	ከ10.00 በላይ	ጠቅላላ	
በግብርና ሥራ የተሰማሩ									
የባለይዘታ ብዛት	1,350,569	3,966,473	3,527,455	3,551,457	2,122,980	242,612	27,525	14,789,071	Number of Agricultural Holders
የባለይዘታ ብዛት ከ-ምሴቲ-ቭ መቶኛ	9.13	26.82	23.85	24.01	14.36	1.64	0.19	100	Cumm Percent of Holders
በሰብል የተያዘ ማሣ ጠቅላላ ስፋት	36,795	933,931	2,119,805	4,147,939	4,799,322	1,079,700	241,391	13,358,883	Total Crop Area (Hectares)
የመሬት ስፋት ከ-ምሴቲ-ቭ መቶኛ	0.28	6.99	15.86	31.05	35.93	8.08	1.81	100	Cumm Percent of Total Crop Area
አማካይ የአንድ ባለይዘታ የማሣ ስፋት (በሄክታር)	0.04	0.29	0.73	1.42	2.9	6.46	12.8	1.15	Average Crop Area Per Holder (ha)
	UNDER 0.10	0.10- 0.50	0.51-1.00	1.01-2.00	2.01-5.00	5.01-10.00	10.00+	Total	N.o Holders and Size of Holding
	Size Of Holding(Hectares)								

\*\* የአርብቶአደር አካባቢዎችን አይጨምርም

\*\* Excluding Pastrolist areas



ሠንጠረዥ መ.10 በኢትዮጵያ የዋናው መሀር የሰብል ምርት ዘመን በግብርና ሥራ የተሰማሩ ጠቅላላ ባለይዞታ ብዛት፣ በሰብል የተያዘ መሬት ጠቅላላ ስፋት፣ የአንድ ባለይዞታ በሰብል የተያዘ መሬት ስፋትና ሥርጭት በይዞታ ስፋት መጠን 2004 ዓ.ም

Table D.10 Distribution of Total Number of Holders, Total Crop Area and Crop Area Per Holder by Size of Holding, Main Season 2011/2012 ETHIOPIA\* \*

የባለይዞታ ብዛትና የመሬት ስፋት መጠን	የይዞታ መጠን (በሄክታር)								
	ከ0.10 በታች	0.10- 0.50	0.51-1.00	1.01-2.00	2.01-5.00	5.01-10.00	ከ10.00 በላይ	ጠቅላላ	
የባለይዞታ ብዛት	1,328,644	3,844,426	3,346,715	3,609,997	2,362,049	228,527	27,080	14,747,439	Number of Agricultural Holders
የባለይዞታ ብዛት ከ-ምሉቲቭ መቶኛ	9	35.07775	57.77128	82.25009	98.26676	99.81637	99.99999		Cumm Percent of Holders
በሰብል የተያዘ ማሳ ጠቅላላ ስፋት	36,497	899,633	2,000,058	4,219,353	5,270,385	1,006,127	258,066	13,690,119	Total Crop Area (Hectares)
የመሬት ስፋት ከ-ምሉቲቭ መቶኛ	0.266594	6.837998	21.4475	52.26792	90.76565	98.11495	100		Cumm Percent of Total Crop Area
አማካይ የአንድ ባለይዞታ የማሳ ስፋት (በሄክታር)	0.04	0.24	0.6	1.17	2.24	4.42	9.57	0.96	Average Crop Area Per Holder (ha)
	Under 0.10	0.10- 0.50	0.51-1.00	1.01-2.00	2.01-5.00	5.01-10.00	10.00+	TOTAL	No of Holders and Size of Holding
	Size of Holding (Hectares)								

\*\* የአርብቶአደር አካባቢችን አይጨምርም፡

\*\* Excluding Pastralist Areas.

ሠንጠረዥ መ. 11 በኢትዮጵያ **\*\*በዋናው** የመኸር ወቅት በግብርና ሥራ የተሰማሩ ቤተሰቦች፣ ባለይዞታዎች፣ የቤተሰብ አባላት ብዛትና ሥርጭት አማካኝ የአንድ ቤተሰብ የአባላት ብዛት በይዞታ መጠን 2002 ዓ.ም.

Table D.11 Distribution of Total Number of Agricultural Households , Holders ,Total Members and Average Household Size by Size of Holding, Main Season 2009/2010 ETHIOPIA\*\*

	የይዞታ መጠን (በሄክታር)								
	ከ0.10 በታች	0.10-50	0.51-1.00	1.01-2.00	2.01-5.00	5.01-10.00	ከ10.00 በላይ	ጠቅላላ	
በግብርና ሥራ የተሰማሩ የቤተሰብ ብዛት	886,707	3,040,058	3,124,932	3,490,060	2,152,529	193,127	14,537	12,901,952	Number of Households
የቤተሰብ ብዛት ከምሌቲቭ መቶኛ	6.87	23.56	24.22	27.05	16.68	1.50	0.11	100.00	Cumm % of Households
የባለይዞታ ብዛት	970,466	3,207,094	3,209,759	3,540,914	2,129,048	180,820	14,537	13,252,639	Number of Holders
የባለይዞታ ብዛት ከምሌቲቭ መቶኛ	7.32	24.20	24.22	26.72	16.07	1.36	0.11	100.00	Cumm % of Holders
	Under 0.10	0.10-50	0.51-1.00	1.01-2.00	2.01-5.00	5.01-10.00	10.00+	Total	Households & Members
	Size of Holding (Hectares)								

የአርብቶስደር አካባቢችን አይጨምርም፡

\*\* Excluding Pastralist Areas.

ሠንጠረዥ መ. 12 በኢትዮጵያ **\*\*በዋናው** የመኸር ወቅት በግብርና ሥራ የተሰማሩ ቤተሰቦች፣ ባለይዞታዎች፣  
የቤተሰብ አባላት ብዛትና ሥርጭት አማካኝ የአንድ ቤተሰብ የአባላት ብዛት  
በይዞታ መጠን 2003 ዓ.ም.

Table D.12 Distribution of Total Number of Agricultural Households , Holders ,Total Members and Average Household  
Size by Size of Holding, Main Season 2010/2011 ETHIOPIA\*\*

ቤተሰብና የቤተሰብ አባላት	የይዞታ መጠን (በኬንታር)								
	ከ0.10 በታች	0.10-0.50	0.51-1.00	1.01-2.00	2.01-5.00	5.01-10.00	ከ10.00 በላይ	ጠቅላላ	
በግብርና ሥራ የተሰማሩ የቤተሰብ ብዛት	1 233 779	3 786 735	3 439 182	3 531 303	2 129 303	255 759	28 790	14,404,851	Number of Households
የቤተሰብ ብዛት ከምሌቲቭ መቶኛ	8.57	26.29	23.88	24.51	14.78	1.78	0.20	100	Cumm % of Households
የባለይዞታ ብዛት	1,350,569	3,966,473	3,527,455	3,551,457	2,122,980	242,612	27,525	14,789,071	Number of Holders
የባለይዞታ ብዛት ከምሌቲቭ መቶኛ	9.13	26.82	23.85	24.01	14.36	1.64	0.19	100	Cumm % of Holders
	Under 0.10	0.10-0.50	0.51-1.00	1.01-2.00	2.01-5.00	5.01-10.00	10.00+	Total	Households & Members
	Size Of Holding (Hectares)								

\*\* የአርብቶስጢክ አካባቢዎችን አይጨምርም፡

\*\* Excluding Pastralist Areas.

ሠንጠረዥ መ. 13 በኢትዮጵያ \*\*በዋናው የመኸር ወቅት በግብርና ሥራ የተሰማሩ ቤተሰቦች፣ ባለይዞታዎች፣ የቤተሰብ አባላት ብዛትና ሥርጭት አማካኝ የአንድ ቤተሰብ የአባላት ብዛት በይዞታ መጠን 2004 ዓ.ም.

Table D.13 Distribution of Total Number of Agricultural Households , Holders ,Total Members and Average Household Size by Size of Holding, Main Season 2011/2012 ETHIOPIA\*\*

ቤተሰብና የቤተሰብ አባላት	የይዞታ መጠን (በሄክታር)								
	ከ0.10 በታች	0.10-0.50	0.51-1.00	1.01-2.00	2.01-5.00	5.01-10.00	ከ10.00 በላይ	ጠቅላላ	
በግብርና ሥራ የተሰማሩ የቤተሰብ ብዛት	1,259,155	3,612,995	3,251,554	3,553,509	2,375,876	245,420	29,286	14,327,794	Number of Households
የቤተሰብ ብዛት ከምሌቲቭ መቶኛ	8.788199	34.00489	56.69892	81.50042	98.08271	99.79561	100		Cumm % of Households
የባለይዞታ ብዛት	1,328,644	3,844,426	3,346,715	3,609,997	2,362,049	228,527	27,080	14,747,439	Number of Holders
የባለይዞታ ብዛት ከምሌቲቭ መቶኛ	9	35.07775	57.77128	82.25009	98.26676	99.81637	99.99999		Cumm % of Holders
	Under 0.10	0.10-0.50	0.51-1.00	1.01-2.00	2.01-5.00	5.01-10.00	10.00+	Total	Households & Members
	Size of Holding (Hectares)								

የአርብቶስደር አካባቢዎችን አይጨምርም፡

\*\* Excluding Pastralist Areas.

ሠንጠረዥ መ.14 በኢትዮጵያ **\*\*በዋናው መኸር ወቅት በግብርና የተሰማሩ ቤተሰቦች ጠቅላላ ብዛት በይዘታ መጠንና በቤተሰብ አባላት ብዛት 2002 ዓ.ም.**

Table D.14 Total Number of Agricultural Households by Size of Holding and Size of Household  
2009/2010 ETHIOPIA\*\*

የይዘታ መጠን በኬታር	የቤተሰብ ብዛት										
	አንድ የቤተሰብ አባል	መቶኛ	ከ2-3 የቤተሰብ አባላት	መቶኛ	ከ4-5 የቤተሰብ አባላት	መቶኛ	ከ6-9 የቤተሰብ አባላት	መቶኛ	10ና ከዚያ በላይ	መቶኛ	
ከ0.10 በታች	683,326	8.27	50,740	4.04	37,923	3.53	76,024	4.52	38,695	6.18	Under 0.10
ከ0.10 - 0.50	2,064,327	24.98	226,197	18.00	237,595	22.13	387,736	23.04	124,204	19.85	0.10 - 0.50
ከ0.51 - 1.00	2,031,597	24.59	293,787	23.38	257,569	23.99	407,303	24.20	134,676	21.52	0.51 - 1.00
ከ1.01 - 2.00	2,146,107	25.97	405,114	32.25	318,126	29.63	453,439	26.94	167,274	26.73	1.01 - 2.00
ከ2.01 - 5.00	1,230,324	14.89	258,136	20.55	199,461	18.58	324,743	19.29	139,866	22.35	2.01 - 5.00
ከ5.01 - 10.00	102,268	1.24	20,838	1.66	20,037	1.87	30,123	1.79	19,861	3.17	5.01 - 10.00
10.01 እና በላይ	4,989	0.06	*	0.00	2,890	0.27	3,870	0.23	*	0.00	10.01 and Over
ጠቅላላ	8,262,937	100	1,256,310	100	1,073,601	100	1,683,236	100	625,867	100	Total
	One Member	Percent	2-3 Member	Percent	4-5 Member	Percent	6-9 Member	Percent	10 and Above	Percent	Size Of Holding (In Hectares)
	Size of House Hold										

\* These estimates could not be reported in this table because of high coefficient of variation (i.e less reliable).However they are consolidated in the total estimate.

\*\* የአርብቶአደር አካባቢ ምርመራ

ሠንጠረዥ መ.15 በኢትዮጵያ በዋናው መኸር ወቅት በግብርና የተሰማሩ ቤተሰቦች ጠቅላላ ብዛት በይዞታ መጠንና በቤተሰብ አባላት ብዛት 2003 ዓ.ም.

Table D.15 Total Number of Agricultural Households by Size of Holding and Size of Household  
2010/2011 ETHIOPIA\*\*

የይዞታ መጠን በሄክታር	የቤተሰብ ብዛት										
	አንድ የቤተሰብ አባል	መቶኛ	ከ2-3 የቤተሰብ አባላት	መቶኛ	ከ4-5 የቤተሰብ አባላት	መቶኛ	ከ6-9 የቤተሰብ አባላት	መቶኛ	10ና ከዚያ በላይ	መቶኛ	
ከ0.10 በታች	874 245	9.73	86 982	5.61	76 104	6.50	133 778	6.93	62 670	8.19	Under 0.10
ከ0.10 - 0.50	2 459 029	27.37	299 395	19.30	287 299	24.53	525 369	27.20	215 644	28.18	0.10 - 0.50
ከ0.51 - 1.00	2 182 228	24.29	379 806	24.48	294 370	25.13	420 328	21.76	162 450	21.23	0.51 - 1.00
ከ1.01 - 2.00	2 127 824	23.68	451 397	29.10	288 809	24.66	485 711	25.15	177 562	23.20	1.01 - 2.00
ከ2.01 - 5.00	1 202 738	13.39	303 884	19.59	191 910	16.39	309 280	16.01	121 490	15.87	2.01 - 5.00
ከ5.01 - 10.00	124 965	1.39	27 823	1.79	29 749	2.54	50 517	2.62	22 705	2.97	5.01 - 10.00
10.01 እና በላይ	14 496	0.16	2 147	0.14	2 937	0.25	6 393	0.33	2 816	0.37	10.01 and Over
ጠቅላላ	8 985 525	100	1 551 433	100	1 171 179	100	1 931 377	100	765 337	100	TOTAL
	One Member	Percent	2-3 Member	Percent	4-5 Member	Percent	6-9 Member	Percent	10 and Above	Percent	Size of Holding (In Hectares)
	Size of House Hold										

\* These estimates could not be reported in this table because of high coefficient of variation (i.e less reliable). However they are consolidated in the total estimate.

\*\* የአርብቶአደር አካባቢችን አይጨምርም

\*\* Excluding Pastralist Areas.

**ሠንጠረዥ መ.16 በኢትዮጵያ \*\*በዋናው መኸር ወቅት በግብርና የተሰማሩ ቤተሰቦች ጠቅላላ ብዛት በይዞታ መጠንና በቤተሰብ አባላት ብዛት 2004 ዓ.ም.**

Table D.16 Total Number of Agricultural Households by Size of Holding and Size of Household 2011/2012 ETHIOPIA\*\*

የይዞታ መጠን በኬታር	የቤተሰብ ብዛት										
	አንድ የቤተሰብ	መቶኛ	ከ2-3 የቤተሰብ	መቶኛ	ከ4-5 የቤተሰብ	መቶኛ	ከ6-9 የቤተሰብ	መቶኛ	10ና ከዚያ	መቶኛ	
	አባል		አባላት		አባላት		አባላት		በላይ		
ከ0.10 በታች	749,149	9.93	70,479		64,313	5.54	108,489	6.05	266,724	10.28	Under 0.10
ከ0.10 - 0.50	2,028,202	26.90	209,366		262,486	16.47	460,541	25.69	652,400	25.13	0.10 - 0.50
ከ0.51 - 1.00	1,735,183	23.01	281,790		278,174	22.16	410,829	22.91	545,579	21.02	0.51 - 1.00
ከ1.01 - 2.00	1,820,693	24.14	384,897		280,404	30.27	439,532	24.51	627,982	24.19	1.01 - 2.00
ከ2.01 - 5.00	1,100,116	14.59	287,369		210,482	22.60	327,697	18.28	450,212	17.34	2.01 - 5.00
ከ5.01 - 10.00	99,981	1.33	33,985		27,622	2.67	39,639	2.21	44,192	1.70	5.01 - 10.00
10.01 እና በላይ	7,409	0.10	3,571		3,294	0.28	6,292	0.35	8,720	0.34	10.01 and Over
ጠቅላላ	7,540,734	100.00	1,271,457		1,126,775	100.00	1,793,020	100.00	2,595,808	100.00	Total
	One Member	Percent	2-3 Members	Percent	4-5 Members	Percent	6-9 Members	Percent	10 and Above	Percent	Size of Holding (in Hectares)
	Size of House Hold										

\* These estimates could not be reported in this table because of high coefficient of variation (i.e less reliable).However they are consolidated in the total estimate.

\*\* የአርብቶአደር አካባቢችን አይጨምርም

\*\* Excluding Pastralist Areas.



ሠንጠረዥ መ.17 በኢትዮጵያ\*\* በዋናው መኸር ወቅት በግብርና ሥራ የተሰማሩ ባለይዞታዎች ብዛት በዕድሜና በተሰማሩበት የግብርና ሥራ ዓይነት 2002 ዓ.ም.

Table D.17 Number of Holders by Age of Holder and Type of Holding 2009/2010 ETHIOPIA\*\*

የባለይዞታው ዕድሜ በዓመት	ሰብል ብቻ	በመቶኛ	ከብት እርባታ ብቻ	በመቶኛ	ሰብል ማምረትና ከብት እርባታ	በመቶኛ	ጠቅላላ የባለይዞታዎች ብዛት	መቶኛ	
ከ18 በታች	46,798	26.83	69,088	39.62	58,508	33.55	174,394	100	Under 18
ከ18 - 20	89,333	23.94	57,950	15.53	225,876	60.53	373,159	100	18 - 20
ከ21 - 24	114,549	16.54	42,483	6.13	535,658	77.33	692,690	100	21 - 24
ከ25 - 29	202,451	11.62	54,832	3.15	1,484,499	85.23	1,741,782	100	25 -29
ከ30 - 39	286,338	8.04	77,574	2.18	3,197,742	89.78	3,561,654	100	30 - 39
ከ40 - 49	158,213	6.00	52,578	2.00	2,424,333	92.00	2,635,124	100	40 - 49
ከ50 - 59	139,753	7.25	38,985	2.02	1,748,597	90.73	1,927,335	100	50 - 59
60 እና ከዚያ በላይ	274,265	11.76	73,561	3.15	1,985,209	85.09	2,333,035	100	60 & Above
ጠቅላላ	1,311,700	9.76	467,050	3.48	11,660,424	86.76	13,439,174	100	Total
	With Crop Only	Percent	With Livestock Only	Percent	With Crop And Livestock	Percent	Total Number of Holders	PERCENT	Age of Holders in Years

ሠንጠረዥ መ.18 በኢትዮጵያ\*\* በዋናው መኸር ወቅት የግብርና ሥራ የተሰማሩ ባለይዞታዎች ብዛት በዕድሜና በተሰማሩበት የግብርና ሥራ ዓይነት 2003 ዓ.ም.

Table D.18 Number of Holders by Age of Holder and Type of Holding 2010/2011 ETHIOPIA\*\*

የባለይዞታው ዕድሜ በዓመት	ሰብል ብቻ	በመቶኛ	ከብት እርባታ ብቻ	በመቶኛ	ሰብል ማምረትና ከብት እርባታ	በመቶኛ	ጠቅላላ የባለይዞታዎች ብዛት	በመቶኛ	
ከ18 በታች	32,784	18.30	85,368	47.66	60,972	34.04	179,124	100	Under 18
ከ18 - 20	97,875	24.82	63,706	16.15	232,802	59.03	394,384	100	18 - 20
ከ21 - 24	125,563	17.62	52,011	7.30	535,124	75.08	712,698	100	21 - 24
ከ25 - 29	242,049	12.47	87,502	4.50	1,612,888	83.03	1,942,440	100	25 - 29
ከ30 - 39	364,307	9.15	118,050	2.97	3,498,415	87.88	3,980,772	100	30 - 39
ከ40 - 49	208,973	7.04	71,643	2.41	2,686,634	90.54	2,967,250	100	40 - 49
ከ50 - 59	170,182	7.77	40,113	1.83	1,980,990	90.40	2,191,285	100	50 - 59
60 እና ከዚያ በላይ	274,186	10.42	76,265	2.90	2,281,530	86.68	2,631,982	100	60 & Above
ጠቅላላ	1,515,920	10.11	594,658	3.96	12,889,356	85.92	14,999,933	100	Total
	With Crop Only	Percent	With Livestock Only	Percent	With Crop and Livestock	Percent	Total Number of Holders	Percent	Age of Holders in Years

ሠንጠረዥ መ.19 በኢትዮጵያ\*\* በዋናው መኸር ወቅት በግብርና ሥራ የተሰማሩ ባለይዞታዎች ብዛት በዕድሜና በተሰማሩበት የግብርና ሥራ ዓይነት 2004 ዓ.ም.

Table D.19 Number of Holders by Age of Holder and Type of Holding 2011/12 ETHIOPIA\*\*

የባለይዞታው ዕድሜ በዓመት	ሰብል ብቻ	በመቶኛ	ከብት እርባታ ብቻ	በመቶኛ	ሰብል ማምረትና ከብት እርባታ	በመቶኛ	ጠቅላላ የባለይዞታዎች ብዛት	በመቶኛ	
ከ18 በታች	46,690	2.96	91,596	15.89	100,755	0.78	239,041	1.59	Under 18
ከ18 - 20	111,920	7.09	63,929	11.09	240,622	1.87	416,471	2.77	18 - 20
ከ21 - 24	146,875	9.30	51,608	8.95	548,062	4.26	746,544	4.97	21 - 24
ከ25 - 29	254,906	16.15	66,841	11.59	1,598,345	12.41	1,920,092	12.77	25 - 29
ከ30 - 39	347,537	22.02	100,004	17.35	3,410,764	26.49	3,858,305	25.67	30 - 39
ከ40 - 49	201,779	12.78	73,506	12.75	2,696,694	20.94	2,971,979	19.77	40 - 49
ከ50 - 59	176,547	11.18	47,096	8.17	1,939,576	15.06	2,163,218	14.39	50 - 59
60 እና ከዚያ በላይ	292,349	18.52	81,937	14.21	2,341,498	18.18	2,715,785	18.07	60 & Above
ጠቅላላ	1,578,603	100.00	576,517	100.00	12,876,315	100.00	15,031,435	100.00	Total
	With Crop Only	Percent	With Livestock Only	Percent	With Crop and Livestock	Percent	Total Number of Holders	Percent	Age of Holders in Years

ሠንጠረዥ መ.20 በኢትዮጵያ\*\* በዋናው መኸር ወቅት በግብርና ሥራ የተሰማሩ ባለይዞታዎች ብዛት በፆታና በተሰማሩበት የግብርና ሥራ ዓይነት 2002 ዓ.ም.

Table D.20 Number of Holders by Sex of Holder and Type of Holding, 2009/2010 ETHIOPIA\*\*

የባለይዞታው ፆታ	ሰብል ብቻ	በመቶኛ	ከብት እርባታ ብቻ	በመቶኛ	ሰብል ማምረትና ከብት እርባታ	በመቶኛ	ጠቅላላ የባለይዞታዎች ብዛት	በመቶኛ	
ወንድ	912,929	8.42	256,607	2.37	9,670,614	89.21	10,840,150	100	Male
ሴት	398,771	15.34	210,443	8.10	1,989,809	76.56	2,599,024	100	Female
ጠቅላላ	1,311,700	9.76	467,050	3.48	11,660,424	86.76	13,439,174	100	Total
	With Crop Only	Percent	With Livestock Only	Percent	With Crop and Livestock	Percent	Total Number of Holders	Percent	Sex of Holder

\*\* የአርብቶአደር አካባቢችን አይጨምርም፡፡

\*\* Excluding Pastralist Areas.

ሠንጠረዥ መ.21 በኢትዮጵያ\*\* በዋናው መኸር ወቅት በግብርና ሥራ የተሰማሩ ባለይዞታዎች ብዛት በፆታና በተሰማሩበት የግብርና ሥራ ዓይነት 2003 ዓ.ም.

Table D.21 Number of Holders by Sex of Holder and Type of Holding, 2010/2011 ETHIOPIA\*\*

የባለይዞታው ፆታ	ሰብል ብቻ	በመቶኛ	ከብት እርባታ ብቻ	በመቶኛ	ሰብል ማምረትና ከብት እርባታ	በመቶኛ	ጠቅላላ የባለይዞታዎች ብዛት	በመቶኛ	
ወንድ	1,103,126	8.96	371,094	3.01	10,836,801	88.03	12,311,020	100	Male
ሴት	412,794	15.35	223,564	8.31	2,052,555	76.33	2,688,913	100	Female
ጠቅላላ	1,515,920	10.11	594,658	3.96	12,889,356	85.93	14,999,933	100	Total
	With Crop Only	Percent	With Livestock Only	Percent	With Crop and Livestock	Percent	Total Number of Holders	Percent	Sex of Holder

\*\* የአርብቶአደር አካባቢችን አይጨምርም::

\*\* Excluding Pastoralist Areas.

ሠንጠረዥ መ.22 በኢትዮጵያ\*\* በዋጋው መኸር ወቅት በግብርና ሥራ የተሰማሩ ባለይዞታዎች ብዛት በጾታና በተሰማሩበት የግብርና ሥራ ዓይነት 2004 ዓ.ም.

Table D.22 Number of Holders by Sex of Holder and Type of Holding, 2011/2012 ETHIOPIA\*\*

የባለይዞታው ይታ	ሰብል ብቻ	በመቶኛ	ከብት እርባታ ብቻ	በመቶኛ	ሰብል ማምረት ከብት እርባታ	በመቶኛ	የባለይዞታዎች ብዛት	በመቶኛ	
ወጪ	1109	2.31	341,680	59.27	10,651,712	82.72	12,103,038	80.51	Male
ሴት	46895	97.67	234,837	40.73	2,224,604	17.28	2,928,397	19.49	Female
ጠቅላላ	48004	100	576,517	100	12,876,316	100	15,031,435	100	Total
	With Crop Only	Percent	With Livestock Only	Percent	With Crop and Livestock	Percent	Total Number of Holders	Percent	Sex of Holder

\*\*አርብቶ አደር አካባቢዎችን አይጨምርም

\*\* Excluding Pastoralist Areas.

ሠንጠረዥ መ.23 በኢትዮጵያ **\*\*በዋናው መኸር ወቅት** በሰብል የተያዘ የመሬት **ስፋትና ሥርጭት**  
በመቶኛ፣ በሰብል **ዓይነትና** በይዘታ መጠን 2002 ዓ.ም

Table D.23 Estimates and Percentages of Total Crop Area by Crop Type and Size of Holding 2009/2010 ETHIOPIA\*\*

የሰብል ዓይነት	የይዘታ መጠን ( በሄክታር)								
	ከ0.10 በታች	ከ0.10 - 0.50	ከ0.51- 1.00	ከ1.01- 2.00	ከ2.01- 5.00	ከ5.01- 10.00	ከ10.00 በላይ	ጠቅላላ	
ጊዜያዊ ሰብሎች በሄክታር	20087	613834	1701848	3928709	4713907	810554	128139	11917078	Temporary Crops (in Hectares)
በመቶኛ	0.17	5.15	14.28	32.97	39.56	6.80	1.08	100.00	Percent
ቋሚ ሰብሎች በሄክታር	8031	184763	268666	317407	219904	30233	*	1036558	Permanent Crops (in Hectares)
በመቶኛ	0.77	17.82	25.92	30.62	21.21	2.92		100	Percent
ጠቅላላ በሰብል የተያዘ ማሣ ስፋት በሄክታር	28118	798597	1970514	4246116	4933811	840787	135692	12953636	Total Crop Land (in Hectares)
በመቶኛ	0.22	6.17	15.21	32.78	38.09	6.49	1.05	100	Percent
	Under 0.10	0.10-0.50	0.51-1.00	1.01-2.00	2.01-5.00	5.01-10.00	10.00+	Total	Crop Type
	Size of Holding( Hectares)								

\* These estimates could not be reported in this table because of high coefficient of variation (i.e less reliable). However they are consolidated in the total estimates.

\*\* አርብቶአደር አካባቢችን አይጨምርም፡፡

\*\*Excluding Pastoralists Area



ሠንጠረዥ መ.24 በኢትዮጵያ \*\*በዋናው መኸር ወቅት በሰብል የተያዘ የመሬት ስፋትና ሥርጭት  
በመቶኛ፡ በሰብል ዓይነትና በይዘታ መጠን 2003 ዓ.ም

Table D.24 Estimates and Percentages of Total Crop Area by Crop Type and Size of Holding 2010/2011 ETHIOPIA\*\*

የሰብል ዓይነት	የይዘታ መጠን ( በሄክታር)								
	ከ0.10 በታች	ከ0.10- 0.50	ከ0.51 - 1.00	ከ1.01- 2.00	ከ2.01- 5.00	ከ5.01- 0.00	ከ10.00 በላይ	ጠቅላላ	
ጊዜያዊ ሰብሎች በሄክታር በመቶኛ	24,016 0.20	715,820 5.85	1,861,356 15.21	3,850,052 31.45	4,542,238 37.11	1,017,702 8.31	230,083 1.88	12,241,268 100	Temporary Crops (in Hectares) Percent
ቋሚ ሰብሎች በሄክታር በመቶኛ	12,779 1.14	218,111 19.52	258,448 23.12	297,886 26.65	257,084 23.00	61,998 5.55	* 1,117,613 100		Permanent Crops (in Hectares) Percent
ጠቅላላ በሰብል የተያዘ ማሣ ስፋት በሄክታር በመቶኛ	36,795 0.28	933,931 6.99	2,119,805 15.87	4,147,939 31.05	4,799,322 35.93	1,079,700 8.08	241,391 1.81	13,358,881 100	Total Crop Land (in Hectares) Percent
	Under 0.10	0.10-0.50	0.51-1.00	1.01-2.00	2.01-5.00	5.01- 10.00	10.00+	Total	Crop Type
	Size of Holding( Hectares)								

\* These estimates could not be reported in this table because of high coefficient of variation (i.e less reliable).

However they are consolidated in the total estimates.

\*\* አርብ-ቶአደር አካባቢችን አይጨምርም፡፡

\*\* Excluding Pastoralists Areas.

ሠንጠረዥ መ.25 በኢትዮጵያ \*\*በዋናው መኸር ወቅት በሰብል የተያዘ የመሬት ስፋትና ሥርጭት በመቶኛ፣ በሰብል ዓይነትና በይዞታ መጠን 2004ዓ.ም  
Table D.25 Estimates and Percentages of Total Crop Area by Crop Type and Size of Holding 2011/2012 ETHIOPIA\*\*

የሰብል ዓይነት	የይዞታ መጠን ( በሄክታር)								
	ከ0.10 በታች	ከ0.10 - 0.50	ከ0.51-1.00	ከ1.01-2.00	ከ2.01- 5.00	ከ5.01- 10.00	ከ10.0 በላይ	ጠቅላላ	
ጊዜያዊ ሰብሎች በሄክታር	24,824	686,347	1,748,680	3,907,316	4,995,847	948,958	245,665	12,557,637	Temporary Crops (in Hectares)
በመቶኛ	0.198	5.466	13.925	31.115	39.783	7.557	1.956	100.000	Percent
ቋሚ ሰብሎች በሄክታር	11,673	213,286	251,379	312,037	274,539	57,169	12,401	1,132,483	Permanent Crops (in Hectares)
በመቶኛ	1.03	18.83	22.20	27.55	24.24	5.05	1.10	100.000	Percent
ጠቅላላ በሰብል የተያዘ ማሳ ስፋት በሄክታር	36,497	899,633	2,000,058	4,219,353	5,270,385	1,006,127	258,066	13,690,119	Total Crop Land (in Hectares)
በመቶኛ	0.27	6.57	14.61	30.82	38.50	7.35	1.89	100.00	Percent
	Under 0.10	0.10-0.50	0.51-1.00	1.01-2.00	2.01-5.00	5.01-10.00	10.00+	Total	Crop Type
	Size of Holding( Hectares)								

\* These estimates could not be reported in this table because of high coefficient of variation (i.e less reliable). However they are consolidated in the total estimates.

\*\* አርብቶአደር አካባቢችን አይጨምርም፡፡

\*\* Excluding Pastoralist Areas.

ሠንጠረዥ መ.26 በኢትዮጵያ በዋናው መኸር ወቅት በግብርና ሥራ የተሰማሩ ጠቅላላ ባለይዞታዎች ብዛት በሰብል የተያዘ መሬት ስፋት ግምትና አማካይ በአንድ ባለይዞታ በሰብል የተያዘ መሬት መጠን 2002 ዓ.ም.

Table D.26 Number of Holders, Total Crop Area and Average Area Per Holder by Crop Type and Size of Holding 2009/2010 ETHIOPIA\*\*

የሰብል ዓይነት	የይዞታ መጠን ( '000 <b>በሄክታር</b> )								
	ከ0.10 በታች	ከ0.10 - 0.50	ከ0.51 - 1.00	ከ1.01 - 2.00	ከ2.01 - 5.00	ከ5.01 - 10.00	ከ10.00 በላይ	ጠቅላላ	
ጊዜያዊ ሰብል	609960.00	3040419.00	3166745.00	3516654.00	2120428.00	179099.00	14537.00	12647843.00	Temporary
የባለይዞታ ብዛት	4.82	24.04	25.04	27.80	16.77	1.42	0.11	100	Number of Holders
የባለይዞታ ብዛት በመቶኛ	20087.00	613834.00	1701848.00	3928709.00	4713907.00	810554.00	128139.00	11917078.00	Percentage of Holders
በሰብል የተያዘ ማሣ ስፋት (በሄክታር)	0.17	5.15	14.28	32.97	39.56	6.80	1.08	100	Total Crop Area in Hectares
በሰብል የተያዘ ማሣ ስፋት በመቶኛ	0.03	0.20	0.54	1.12	2.22	4.53	8.81	0.94	Percentage of Area
አማካይ የባለይዞታ ይዞታ(በሄክታር)									Average Area Per Holder (ha)
ቋሚ ሰብል	309705.00	1871955.00	1800422.00	1819176.00	1037717.00	96522.00	5749.00	6941246.00	Permanent
የባለይዞታ ብዛት	4.46	26.97	25.94	26.21	14.95	1.39	0.08	100	Number of Holders
የባለይዞታ ብዛት በመቶኛ	8031.00	184763.00	268666.00	317407.00	219904.00	30233.00	*	1036558.00	Percentage of Holders
በሰብል የተያዘ ማሣ ስፋት (በሄክታር)	0.77	17.82	25.92	30.62	21.21	2.92		100	Total Crop Area in Hectares
በሰብል የተያዘ ማሣ ስፋት በመቶኛ	0.03	0.10	0.15	0.17	0.21	0.31	*	0.15	Percentage of Area
አማካይ የባለይዞታ ይዞታ (በሄክታር)									Average Area Per Holder (ha)
ጠቅላላ	28118.00	798597.00	1970514.00	4246116.00	4933811.00	840787.00	135692.00	12953636.00	Total
በሰብል የተያዘ ማሣ ስፋት (በሄክታር)	609960.00	3040419.00	3166745.00	3516654.00	2120428.00	179099.00	14537.00	12647843.00	Crop Area in Hectares
በሰብል የተያዘ ማሣ ስፋት በመቶኛ	4.82	24.04	25.04	27.80	16.77	1.42	0.11	100	Percentage of Area
	Under 0.10	0.10-0.50	0.51-1.00	1.01-2.00	2.01-5.00	5.01-10.00	10.00+	Total	Crop Type
	Size of Holding('000 Hectares)								

\* These estimates could not be reported in this table because of high coefficient of variation (i.e less reliable). However they are consolidated in the total estimates.

\*\* አርብቶአዲር ኦካባቢችን አይጨምርም::

\*\* Excluding Pastoralist Area.

ሠንጠረዥ መ.27 በኢትዮጵያ በዋናው መኸር ወቅት በግብርና ሥራ የተሰማሩ ጠቅላላ ባለይዞታዎች ብዛት በሰብል የተያዘ መሬት ስፋት ግምትና አማካይ በአንድ ባለይዞታ በሰብል የተያዘ መሬት መጠን 2003 ዓ.ም.

Table D.27 Number of Holders, Total Crop Area and Average Area Per Holder by Crop Type and Size of Holding 2010/2011 ETHIOPIA\*\*

የሰብል ዓይነት	የይዞታ መጠን ( '000 በሄክታር)								
	ከ0.10 በታች	ከ0.10 - 0.50	ከ0.51 - 1.00	ከ1.01 - 2.00	ከ2.01 - 5.00	ከ5.01 - 10.00	ከ10.00 በላይ	ጠቅላላ	
<b>ጊዜያዊ ሰብል</b>	<b>891,008</b>	<b>3,695,894</b>	<b>3,455,009</b>	<b>3,498,910</b>	<b>2,099,754</b>	<b>241,672</b>	<b>27,114</b>	<b>13,909,361</b>	Temporary
የባለይዞታ ብዛት	6.41	26.57	24.84	25.16	15.10	1.74	0.19	100	Number of Holders
የባለይዞታ ብዛት በመቶኛ በሰብል የተያዘ ማሣ	24,016	715,820	1,861,356	3,850,052	4,542,238	1,017,702	230,083	12,241,268	Percentage of Holders
ስፋት (በሄክታር)	0.20	5.85	15.21	31.45	37.11	8.31	1.88	100	Total Crop Area in Hectares
በሰብል የተያዘ ማሣ	0.03	0.19	0.54	1.1	2.16	4.21	8.49	0.88	Percentage of Area
አማካይ የባለይዞታ ይዞታ (በሄክታር)									Average Area Per Holder (ha)
<b>ቋሚ ሰብል</b>	<b>533,683</b>	<b>2,545,561</b>	<b>2,010,383</b>	<b>1,860,923</b>	<b>1,032,150</b>	<b>109,152</b>	<b>9,837</b>	<b>8,101,689</b>	Permanent
የባለይዞታ ብዛት	6.59	31.42	24.81	22.97	12.79	1.35	0.12	100	Number of Holders
የባለይዞታ ብዛት በመቶኛ በሰብል የተያዘ ማሣ	12,779	218,111	258,448	297,886	257,084	61,998	*	1,117,613	Percentage of Holders
ስፋት (በሄክታር)	1.14	19.52	23.12	26.65	23.00	5.55		100	Total Crop Area in Hectares
በሰብል የተያዘ ማሣ	0.02	0.09	0.13	0.16	0.25	0.57	*	0.14	Percentage of Area
አማካይ የባለይዞታ ይዞታ (በሄክታር)									Average Area Per Holder (ha)
<b>ጠቅላላ</b>	<b>36,795</b>	<b>933,931</b>	<b>2,119,805</b>	<b>4,147,939</b>	<b>4,799,322</b>	<b>1,079,700</b>	<b>241,391</b>	<b>13,358,881</b>	Total
በሰብል የተያዘ ማሣ	0.28	6.99	15.87	31.05	35.93	8.08	1.81	100	Crop Area in Hectares
በሰብል የተያዘ ማሣ	891,008	3,695,894	3,455,009	3,498,910	2,099,754	241,672	27,114	13,909,361	Percentage of Area
	Under 0.10	0.10-0.50	0.51-1.00	1.01-2.00	2.01-5.00	5.01-10.00	10.00+	Total	Crop Type
	Size of Holding ('000 Hectares)								

\* These estimates could not be reported in this table because of high coefficient of variation (i.e less reliable). However they are consolidated in the total estimates.

\*\* አርብቶጵር አካባቢ ስር አይጨምርም::

\*\* Excluding Pastoralist Areas.

ሠንጠረዥ መ.28 በኢትዮጵያ በዋናው መኸር ወቅት በግብርና ሥራ የተስማሩ ጠቅላላ ባለይዞታዎች ብዛት በሰብል የተያዘ መሬት ስፋት ግምትና አማካይ በአንድ ባለይዞታ በሰብል የተያዘ መሬት መጠን 2004 ዓ.ም.

Table D.28 Number of Holders, Total Crop Area and Average Area Per Holder by Crop Type and Size of Holding 2011/2012 ETHIOPIA\*\*

የሰብል ዓይነት	የይዞታ መጠን ( '000 (ሺካታር)								
	ከ0.10 በታች	ከ0.10-0.50	ከ0.51 - 1.00	ከ1.01 - 2.00	ከ2.01 - 5.00	ከ5.01 -10.00	ከ10.00 በላይ	ጠቅላላ	
ጊዜያዊ ሰብል	24,824	686,347	1,748,680	3,907,316	4,995,847	948,958	245,665	12,557,637	Temporary
የባለይዞታ ብዛት	832,419	3,617,757	3,297,838	3,578,761	2,350,266	227,136	26,980	13,931,157	Number of Holders
የባለይዞታ ብዛት በመቶኛ	5.98	25.97	23.67	25.69	16.87	1.63	0.19	100.00	Percentage of Holders
በሰብል የተያዘ ማሣ ስፋት (በሺካታር)	-	-	-	-	-	-	-	-	Total Crop Area in Hectares
በሰብል የተያዘ ማሣ ስፋት በመቶኛ	-	-	-	-	-	-	-	-	Percentage of Area
አማካይ የባለይዞታ ይዞታ (በሺካታር)	0.03	0.19	0.53	1.09	2.13	4.18	9.11	0.9	Average Area Per Holder (ha)
ቋሚ ሰብል	11,673	213,286	251,379	312,037	274,539	57,169	12,401	1,132,483	Permanent
የባለይዞታ ብዛት	480,730	2,425,143	2,012,773	1,979,383	1,258,062	112,917	13,511	8,282,520	Number of Holders
የባለይዞታ ብዛት በመቶኛ	5.80	29.28	24.30	23.90	15.19	1.36	0.16	100.00	Percentage of Holders
በሰብል የተያዘ ማሣ ስፋት (በሺካታር)	-	-	-	-	-	-	-	-	Total Crop Area in Hectares
በሰብል የተያዘ ማሣ ስፋት በመቶኛ	-	-	-	-	-	-	-	-	Percentage of Area
አማካይ የባለይዞታ ይዞታ (በሺካታር)	0.02	0.09	0.12	0.16	0.22	0.51	0.92	0.14	Average Area Per Holder (ha)
ጠቅላላ	36,497	899,633	2,000,058	4,219,353	5,270,385	1,006,127	258,066	13,690,119	Total
በሰብል የተያዘ ማሣ ስፋት (በሺካታር)	-	-	-	-	-	-	-	-	Crop Area in Hectares
በሰብል የተያዘ ማሣ ስፋት በመቶኛ	-	-	-	-	-	-	-	-	Percentage of Area
	Under 0.10	0.10-0.50	0.51-1.00	1.01-2.00	2.01-5.00	5.01-10.00	10.00+	Total	Crop Type
	Size of Holding ('000 Hectares)								

\* These estimates could not be reported in this table because of high coefficient of variation (i.e less reliable). However they are consolidated in the total estimates.

\*\* አርብቶራር አካባቢ ላይ የሚገኙትን አይጨምርም::  
\*\*Excluding Pastoralist Areas.

ሠንጠረዥ መ.29 በኢትዮጵያ \*\* በዋናው የመኸር ወቅት በጊዜያዊ ሰብሎች የተያዘ የመሬት ስፋት ግምት በይዞታ መጠን 2002 ዓ.ም.

Table D.29 Estimates of Area Under Temporary Crops by Size of Holding 2009/2010 ETHIOPIA\*\*.

ስፋት በኪላታር

AREA IN HECTARES

የሰብል ዓይነት	የይዞታ መጠን (በኪሃታር)								
	ከ0.10 በታች	ከ0.10-0.50	ከ0.51-1.00	ከ1.01-2.00	ከ2.01-5.00	ከ5.01-10.00	ከ10.00 በላይ	ጠቅላላ	
የብርና የአገዳ እህሎች	12,737	476,450	1,336,331	3,044,950	3,306,833	528,786	64,031	8,770,118	Cereals
ጤፍ	1,017	100,407	328,737	871,679	1,030,246	135,575	13,672	2,481,333	Teff
ገብስ	1,263	55,632	152,103	316,493	373,205	75,316	3,746	977,757	Barley
ስንዴ	1,207	69,706	192,140	461,990	580,854	127,081	20,839	1,453,817	Wheat
በቆሎ	7,986	142,655	317,555	620,618	579,181	81,725	18,402	1,768,122	Maize
ማሽላ	1,222	94,494	283,111	596,838	551,958	83,214	4,460	1,615,297	Sorghum
ዳጉላ	*	11,379	51,742	152,708	169,752	19,874	*	408,099	Finger Millet
አጃ	-	1,026	3,391	8,014	14,315	3,569	*	30,605	Oats
ሩዝ	*	1,152	*	16,611	7,320	*	-	35,088	Rice
ጥሬ-ጥሬዎች	1,893	86,044	236,664	548,311	610,872	90,104	11,347	1,585,236	Pulses
ባቂላ	820	33,386	87,374	191,343	196,159	28,335	1,403	538,820	Faba Beans
አተር	135	12,561	36,944	85,817	82,963	11,540	*	230,749	Field Peas
ቦሎቂ	627	26,301	53,114	94,880	73,763	12,977	*	267,069	Haricot Beans
ሽንብራ	46	4,235	22,139	73,207	114,588	17,215	*	233,440	Chick Peas
ምሥር	*	4,113	12,639	29,930	39,220	8,223	*	94,946	Lentils
ጓያ	*	3,544	16,698	51,182	78,244	9,693	*	159,731	Grass Pea
አኩራ አተር	*	154	844	1,786	*	259	-	6,236	Soya Beans
አብሽ	*	1,598	5,439	12,051	13,586	939	*	33,774	Fenugreek
ግብጦ	*	*	1,474	8,114	9,157	*	*	20,469	Gibto
የቅባት እህሎች	360	16,131	65,238	247,950	404,130	105,911	15,427	855,147	Oil Seeds
ኑግ	*	4,363	21,797	87,854	163,397	33,674	2,324	313,445	Neug
ተልባ	*	5,268	16,266	51,930	85,224	20,488	*	180,873	Linseed
ለውዝ	12	1,977	6,308	19,376	13,226	860	*	41,761	Ground Nut
ሱፍ	13	376	768	2,836	3,481	*	-	7,853	Sufflower
ሰሊጥ	*	2,610	16,713	75,346	123,989	48,218	*	277,992	Sesame
ጎመንዘር	147	1,538	3,387	10,607	14,813	2,290	*	33,223	Rape Seed
ጠቅላላ ጊዜያዊ ሰብሎች	Under 0.10	0.10-0.50	0.51-1.00	1.01-2.00	2.01-5.00	5.01-10.00	10.00+		All Temporary Crops
	Size of Holding (Hectares)								

\* These estimates could not be reported in this table because of high coefficient of variation(i.e less reliable).However they are consolidated in the total estimates.

Totals may not be equal with totals Table D.1.1 due to rounding errors

\*\* የአርብቶ አደር አካባቢን አይጨምርም

\*\*EXCLUDING Pastoralist Areas.

- መረጃ አልተገኘም

- Data not available

Created with

ሠንጠረዥ መ.30 በኢትዮጵያ \*\* በዋናው የመኸር ወቅት በጊዜያዊ ሰብሎች የተያዘ የመሬት ስፋት ግምት በይዞታ መጠን 2003 ዓ.ም.

Table D.30 Estimates of Area Under Temporary Crops by Size of Holding 2010/2011 ETHIOPIA\*\*.

ስፋት በካራት									Area in Hectares
የሰብል ዓይነት	የይዞታ መጠን (በካራት)								
	ከ0.10 በታች	ከ0.10-0.50	ከ0.51-1.00	ከ1.01-2.00	ከ2.01-5.00	ከ5.01-10.00	ከ10.00 በላይ	ጠቅላላ	
የብርና የአገዳ እህሎች	16 931	543 472	1 484 726	3 101 230	3 629 733	764 012	150 631	9 690 734	Cereals
ጤፍ	1 649	113 117	386 306	871 292	1 120 074	215 233	53 518	2 761 190	Teff
ገብስ	1 692	67 956	161 729	327 073	378 897	101 750	7 458	1 046 555	Barley
ስንዴ	1 513	79 217	218 261	501 278	578 558	156 689	17 724	1 553 240	Wheat
በቆሎ	9 417	144 200	322 673	613 299	681 850	158 319	33 421	1 963 180	Maize
ማሽላ	2 306	121 997	335 155	635 382	666 677	101 909	34 308	1 897 734	Sorghum
ዳጉሳ	312	14 161	53 368	136 064	176 597	23 833	3 775	408 110	Finger Millet
አጃ	*	1 679	3 136	6 393	13 237	5 970	*	30 859	Oats
ሩዝ	*	1 144	4 097	10 448	*	*	-	29 866	Rice
ጥሬ-ጥሬዎች	1 828	87 362	215 868	429 502	504 119	100 977	17 867	1 357 523	Pulses
ባቱላ	615	32 321	72 924	142 567	168 635	39 335	2 788	459 184	Faba Beans
አተር	162	9 606	33 978	67 056	77 580	13 981	1 627	203 991	Field Peas
ቦሎቱ	825	32 306	57 051	68 527	61 701	12 317	4 639	237 366	Haricot Beans
ሽንብራ	*	5 539	19 911	63 522	90 154	23 436	*	208 389	Chick Peas
ምሥር	*	2 829	11 529	23 781	33 266	5 114	*	77 334	Lentils
ጓያ	*	2 976	15 086	48 557	56 742	5 483	*	131 044	Grass Pea
አኩሪ አተር	*	600	1 399	5 248	3 412	*	-	11 261	Soya Beans
አብሽ	*	1 159	2 530	4 723	5 588	509	*	14 670	Fenugreek
ግብጦ		*	1 460	5 521	7 040	*	-	14 284	Gibto
የቅባት እህሎች	253	12 588	62 888	194 328	315 209	132 610	56 653	774 530	Oil Seeds
ኑግ	*	3 035	12 347	52 059	123 792	40 802	15 540	247 611	Neug
ተልባ	*	2 513	9 050	25 289	26 083	8 215	*	73 688	Linseed
ለውዝ	*	1 353	7 448	17 283	18 832	4 530	*	49 603	Ground Nut
ሱፍ	7	206	829	1 541	2 307	*	*	5 490	Sufflower
ሰሊጥ	88	4 729	31 234	93 371	139 186	77 602	38 472	384 683	Sesame
ጐመንዘር	57	752	1 980	4 785	5 009	864	*	13 455	Rape Seed
ጠቅላላ ጊዜያዊ ሰብሎች	Under 0.10	0.10-0.50	0.51-1.00	1.01-2.00	2.01-5.00	5.01-10.00	10.00+	Total	All Temporary Crops
	Size of Holding (Hectares)								

\* These estimates could not be reported in this table because of high coefficient of variation(i.e less reliable).However they are consolidated in the total estimates.  
Totals may not be equal with totals Table D.1.1 due to rounding errors

\*\* የአርብቶ አደር አካባቢውን አይጨምርም::  
\*\*Excluding Pastoralist Areas.  
- መረጃ አልተገኘም



ሠንጠረዥ መ.31 በኢትዮጵያ በዋናው የመኸር ወቅት በግዜያዊ ሰብሎች የተያዘ የመሬት ስፋት ግምት ይዞታ መጠን 2004 ዓ.ም

Table D.31 Estimates of Area Under Temporary Crops by Size of Holding 2011/2012 ETHIOPIA\*\*.

ሠንጠረዥ መ.31

ስፋት በካቴር

Area in Hectars

Table D.31

የሰብል ዓይነት		የይዞታ መጠን (በካቴር)							ጠቅላላ	
		ከ0.10 በታች	ከ0.10-0.50	ከ0.51-1.00	ከ1.01-2.00	ከ2.01-5.00	ከ5.01-10.00	ከ10.00 በላይ		
የሰብል የአገዳ አህሎች		16,522	511,086	1,368,496	3,029,987	3,798,567	684,074	180,191	9,588,924	Cereals
ጤፍ		1,123	100,555	336,871	866,306	1,166,413	203,593	56,251	2,731,112	Teff
ገብስ		1,794	62,214	139,801	295,253	351,900	82,816	14,330	948,107	Barley
ስንዴ		1,175	73,278	183,647	430,057	595,944	131,317	22,067	1,437,485	Wheat
በቆሎ		10,439	151,329	323,344	617,989	756,475	142,646	52,502	2,054,724	Maize
ማሽላ		1,804	110,148	329,891	658,916	698,187	94,249	*	1,923,717	Sorghum
ዳጉላ		136	12,021	46,456	144,241	202,103	23,638	3,966	432,561	Finger millet
አጃ		*	1,012	2,603	6,112	15,915	4,326	*	30,568	Oats / 'Aja'
ሩዝ		*	529	*	11,113	11,632	*	-	30,649	Rice
ጥራጥሬዎች		2,450	90,167	214,431	507,703	646,520	125,442	30,096	1,616,809	Pulses
ባቱሊ		992	29,374	61,717	147,720	178,598	34,289	4,870	457,560	Horse beans
አተር		179	8,486	26,339	68,721	83,759	19,083	6,323	212,890	Field peas
ቦሎቱ		861	34,011	63,660	102,343	102,123	18,271	*	331,708	Haricot beans
ሽንብራ		*	5,222	19,889	67,665	114,614	20,540	*	231,299	Chickpeas
ምሥር		*	5,948	15,161	31,992	43,942	11,972	*	109,895	Lentils
ጓያ		*	4,408	18,192	61,781	81,225	12,975	*	179,866	Grass peas/vetch
አኩራ አተር		1	220	1,229	4,154	6,278	*	*	19,397	Soya beans
አብሽ		210	2,302	5,665	11,743	16,872	2,251	*	39,965	Fenugreek
ግብጦ		-	195	2,580	11,584	19,110	*	-	34,229	Gibto
የቅባት አህሎች		904	18,640	70,145	229,057	418,357	119,429	24,340	880,871	Oilseeds
ኑግ		38	4,102	18,903	71,761	152,517	48,387	13,303	309,011	Neug
ተልባ		40	3,086	10,081	29,567	51,553	18,972	3,241	116,541	Linseed
ሰውዝ		55	1,757	7,314	19,402	31,209	3,999	*	64,477	Groundnuts
ሱፍ		*	388	939	2,518	3,704	591	*	8,169	Safflower
ሰሊጥ		358	6,948	27,443	91,837	160,350	43,866	*	337,505	Sesame
ግመዝር		383	2359	5464	13972	19025	3613	352	45168	
ጠቅላላ ጊዜያዊ ሰብል የተያዘ		Under 0.10	0.10-0.50	0.51-1.00	1.01-2.00	2.01-5.00	5.01-10.00	10.00+	Total	All Temporary Crops
		Size of Holding (Hectars)								

\* These estimates could not be reported in this table because of high coefficient of variation(i.e less reliable).However they are consolidated in the total estimates.  
 . Totals may not be equal with totals Table D.1.1 due to rounding errors

\*\* የአርብቶ አደር አካባቢዎችን አይጨምርም::  
 \*\*Excluding Pastoralist Areas.  
 - መረጃ አልተገኘም  
 - Data not available

ሠንጠረዥ መ.32 በኢትዮጵያ\*\* ውስጥ በዋናው መዝና ወቅት በምርጥ ዘር፣ በመስኖ ዘዴ፣ በፀረ-ተባይ መድኃኒት እና ማዳበሪያ በመጠቀም የታረሰ ጠቅላላ መሬት ስፋት በሂክታር (ለግል ባለይዞታዎች ብቻ) 2002 ዓ.ም.

Table D.32 Estimates of Improved Seed, Irrigation, Pesticide and Fertilizer Applied Area and Their Percentage Distribution by Crop for Meher Season of Private Holdings in \*\* ETHIOPIA, 2009/2010 (In Hectares)

የሰብል ዓይነት	የምርት ማግኘቢያ ዘዴና አጠቃቀም															
	ጠቅላላ የታረሰ			በምርጥ ዘር በመጠቀም			በመስኖ ዘዴ በመጠቀም			በፈተብይ መድኃኒት በመጠቀም			በማዳበሪያ በመጠቀም			
	ስፋት	ስፋት	%	ስፋት	ስፋት	%	ስፋት	ስፋት	%	ስፋት		ስፋት	%			
የብርባሪ አገዳ እባሳሎች	9,233,024	322,819	3.50		96,109	1.04		1,241,060	13.44		1,401,114	15.18	Cereals			
ጤፍ	2,588,661	44,755	1.73		19,117	0.74		432,078	16.69		597,851	23.09	Teff			
ገብስ	1,129,112	8,698	0.77		6,514	0.58		140,519	12.45		72,287	6.40	Barley			
ስንዴ	1,683,565	37,888	2.25		9,934	0.59		396,016	23.52		420,411	24.97	Wheat			
በቆሎ	1,772,253	209,850	11.84		32,195	1.82		84,282	4.76		242,639	13.69	Maize			
ማሸላ	1,618,677	16,390	1.01		26,188	1.62		128,798	7.96		33,245	2.05	Sorghum			
ዳጉላ	368,999	3,500	0.95		1,613	0.44		51,771	14.03		33,359	9.04	Finger Millet			
አጃ	24,018	-	-		-	-		3,881	16.16		728	3.03	Oats			
ሩዝ	47,739	-	-		-	-		-	-		-	-	Rice			
ጥራጥሬዎች	1,489,309	12,912	0.87		7,891	0.53		143,451	9.63		112,194	7.53	Pulses			
ባቄላ	512,067	4,413	0.86		2,016	0.39		48,836	9.54		30,767	6.01	Horse Beans			
አተር	226,533	2,022	0.89		-	-		22,836	10.08		16,870	7.45	Field Peas			
ቦሎቂ	244,013	3,524	1.44		-	-		14,837	6.08		6,430	2.64	Haricot Bean			
ሽምብራ	213,187	2,043	0.96		1,961	0.92		27,267	12.79		28,910	13.56	Chick Peas			
ምሥር	105,956	-	-		313	0.30		8,449	7.97		15,592	14.72	Lentils			
ጓዩ	135,658	-	-		-	-		20,237	14.92		12,436	9.17	Vetch			
አኩራ አተር	5,679	115	2.03		-	-		-	-		36	0.63	Soya bean			
አብሽ	21,183	-	-		-	-		586	2.77		841	3.97	Fenugreek			
ግብጦ	25,033	-	-		-	-		-	-		-	-	Gibto			
የቅባት እባሳሎች	780,917	9,139	1.17		971	0.12		67,726	8.67		36,261	4.64	Oil Seeds			
ኑግ	256,794	7,411	2.89		164	0.06		28,444	11.08		18,818	7.33	Neug			
ተልባ	140,801	-	-		-	-		32,487	23.07		9,779	6.95	Linseed			
ለውዝ	41,579	-	-		165	0.40		-	-		-	-	Ground Nuts			
ሱፍ	4,653	-	-		-	-		-	-		-	-	Safflower			
ሰሊጥ	315,843	-	-		-	-		5,483	1.74		-	-	Sesame			
ጎመን ዘር	21,247	148	0.70		-	-		-	-		6,539	30.78	Rape Seed			
አትክልት	138,236	2,788	2.01		5,090	3.68		5,701	4.12		16,149	11.67	Vegetables			
ሰላጣ	-	-	-		-	-		-	-		-	-	Lettuce			
ጥቅል ጎመን	2,562	-	-		-	-		-	-		-	-	Head Cabbage			
የአበሻ ጎመን	32,782	76	0.23		333	1.02		664	2.03		-	-	Ethiopian Cabbage			
ተማቲም	4,953	-	-		637	12.86		-	-		-	-	Tomatoes			
ቃሪያ	7,850	116	1.48		1,490	18.98		120	1.53		484	6.17	Green Peppers			
በርበሬ	89,862	-	-		1,966	2.19		4,460	4.96		14,285	15.90	Red Peppers			
ቆስጣ	227	21	9.25		-	-		-	-		-	-	Swiss Chard			
ሥራሥር	370,951	-	-		-	-		-	-		-	-	Root Crops			
ቀይ ሥር	212,208	3,721	1.75		11,408	5.38		8,370	3.94		11,996	5.65	Beet root			
ካርት	1,096	-	-		-	-		-	-		-	-	Carrot			
ሽንኩርት	2,713	-	-		-	-		-	-		-	-	Onions			
ድንች	17,588	-	-		3,116	17.72		1,636	9.30		2,759	15.69	Potatoes			
ኑጭ ሽንኩርት	69,784	1,726	2.47		3,929	5.63		4,722	6.77		6,511	9.33	Garlic			
ጎደሬ	15,361	97	0.63		779	5.07		404	2.63		-	-	Taro('Godere')			
ስቧር ድንች	52,201	241	0.46		-	-		998	1.91		210	0.40	Sweet Potatoes			
ሌሎች ጊዜያዊ ሰብሎች	53,465	462	0.86		3,089	5.78		217	0.41		896	1.68	Other Temporary			
ቋሚ ሰብሎች	106,054	-	-		1,042	1.64		1,431	2.26		1,106	1.74	Permanent crops			
አቡካዶ	53,086	-	-		6,726	12.67		778	1.47		-	-	Avocados			
መዝ	5,694	-	-		-	-		8	0.14		-	-	Bananas			
ዘይቱን	29,409	-	-		3,489	11.86		-	-		-	-	Guavas			
ሎማ	1,944	-	-		376	19.34		-	-		-	-	Lemons			
ማንጎ	753	-	-		262	34.79		-	-		-	-	Mangoes			
ብርቱካን	8,630	-	-		781	9.05		19	0.22		-	-	Oranges			
ፓፓያ	3,471	-	-		697	20.08		-	-		-	-	Papayas			
አናናስ	3,067	-	-		877	28.59		-	-		-	-	Pineapples			
ንቃት ሰጪ ሰብሎች	-	-	-		-	-		-	-		-	-	Stimulant Crops			
ጫት	557,813	9,852	1.77		14,843	2.66		20,101	3.60		-	-	Chat			
ቡና	138,811	-	-		8,266	5.95		5,950	4.29		-	-	Coffee			
ጌሾ	395,003	7,952	2.01		6,577	1.67		14,151	3.58		-	-	Hops(Gesh o)			
ሌሎች ቋሚ ሰብሎች	414,540	-	-		-	-		-	-		-	-	Other Permanent			
አባላት	-	-	-		-	-		-	-		-	-	Enset			
ሽንኩራ አገዳ	395,632	-	-		3,438	0.87		2,968	0.75		-	-	Sugar Cane			
ሌሎች	18,908	-	-		3,079	16.28		418	2.21		-	-	Others			
ጠቅላላ ሰብሎች ድምር													All Crops			
	Area	Area	%		Area	%		Area	%		Area	%				
	Total Crop	Improved Seed Applied			Irrigated			Pesticide Applied			Fertilizer Applied		Crop Name			

\* These estimates could not be reported in this table because of high coefficient of variation (i.e less reliable). However they are consolidated in the total estimates.

\*\* Excluding Pastoralist Areas.

\*\* የአርብ-ዩኤስሪ አካባቢዎችን አይጨምርም፡፡

- መረጃ አልተገኘም

- Data not available.

Created with

ሆንጠረዥ መ.33 በኢትዮጵያ\*\* ውስጥ በዋናው መኸር ወቅት በምርጥ ዘር፣ በመስኖና ዘዴ፣ በፀረ-ተባይ መድኃኒት እና ማዳበሪያ በመጠቀም የታረሰ ጠቅላላ መሬት ስፋት በሄክታር (ለግል ባለይዞታዎች ብቻ) 2003 ዓ.ም.

Table D.33 Estimates of Improved Seed, Irrigation, Pesticide and Fertilizer Applied Area and Their Percentage Distribution by Crop for Meher Season of Private Holdings in \*\* ETHIOPIA, 2010/2011 (In Hectares)

የሰብል ዓይነት	የምርጥ ማሳደጊያ ዘዴና አጠቃቀም									
	ጠቅላላ የታረሰ	በምርጥ ዘር	በመጠቀም	በመስኖ ዘዴ	በመጠቀም	ፀረ-ተባይ መድኃኒት	በመጠቀም	በማያበረድ በመጠቀም		
	ስፋት	ስፋት	%	ስፋት	%	ስፋት	%	ስፋት	%	
የብርዕና አገዳ ህክምና	9,690,734	704,599	7.27	85,097	0.88	2,150,919	22.20	2,310,395	23.84	Cereals
ጤፍ	2,761,190	39,972	1.45	12,155	0.44	966,213	34.99	981,319	35.54	Teff
ገብስ	1,046,555	*	*	7,207	0.69	231,813	22.15	98,921	9.45	Barley
ሸንዬ	1,553,240	96,710	6.23	5,102	0.33	700,893	45.12	556,218	35.81	Wheat
በቆሎ	1,963,180	551,631	28.10	28,577	1.46	88,061	4.49	565,368	28.80	Maize
ማሽላ	1,897,734	910	0.05	31,147	1.64	102,474	5.40	55,798	2.94	Sorghum
ዳጉሳ	408,110	*	*	893	0.22	48,451	11.87	48,929	11.99	Finger Millet
አጃ	30,859	*	*	*	*	11,515	37.31	701	2.27	Oats
ሩዝ	29,866	*	*	*	*	1,498	5.02	3,141	10.52	Rice
ጥራጥሬዎች	1,357,523	6,933	0.51	*	*	51,991	3.83	36,074	2.66	Pulses
ባቂላ	459,184	1,037	0.23	1,012	0.22	13,270	2.89	10,131	2.21	Horse Beans
አተር	203,991	*	*	*	*	8,757	4.29	8,701	4.27	Field Peas
ቦሎቂ	237,366	1,952	0.82	2,175	0.92	4,036	1.70	9,007	3.79	Haricot Bean
ሽምብራ	208,389	1,304	0.63	2,206	1.06	13,851	6.65	1,325	0.64	Chick Peas
ምሥር	77,334	2,130	2.75	*	*	7,587	9.81	4,580	5.92	Lentils
ጓያ	131,044	*	*	*	*	*	*	327	0.25	Vetch
አኩሪ አተር	11,261	*	*	*	*	-	-	914	8.12	Soya bean
አብሽ	14,670	-	-	*	*	*	*	999	6.81	Fenugreek
ግብጦ	14,284	-	-	-	-	*	*	*	*	Gibto
የቅባት ህክምና	774,530	*	*	*	*	4,518	0.58	9,832	1.27	Oil Seeds
ኑግ	247,611	*	*	-	-	929	0.38	483	0.20	Neug
ተልባ	73,688	*	*	158	0.21	2,329	3.16	*	*	Linseed
ለውዝ	49,603	*	*	*	*	*	*	*	*	Ground Nuts
ሱፍ	5,490	-	-	*	*	*	*	508	9.25	Safflower
ሰሊጥ	384,683	*	*	*	*	588	0.15	2,281	0.59	Sesame
ጎመን ዘር	13,455	*	*	*	*	*	*	4,465	33.18	Rape Seed
አቅጣጫ	126,675	*	*	5,112	4.04	4,179	3.30	34,545	27.27	Vegetables
ሰላጣ	49	*	*	*	*	-	-	*	*	Lettuce
ጥቅል ጎመን	2,138	173	8.09	187	8.75	*	*	181	8.47	Head Cabbage
የአበሻ ጎመን	29,815	*	*	389	1.30	329	1.10	326	1.09	Ethiopian Cabbage
ተማተም	5,338	*	*	2,811	52.66	*	*	1,354	25.37	Tomatoes
ቃሪያ	5,789	*	*	503	8.69	84	1.45	167	2.88	Green Peppers
በርበሬ	83,416	*	*	1,192	1.43	2,279	2.73	32,510	38.97	Red Peppers
ቆስጣ	130	4	3.08	16	12.31	-	-	*	*	Swiss Chard
										Others
ሥራሥር	214,347	2,035	0.95	13,575	6.33	21,560	10.06	12,921	6.03	Root Crops
ቀይ ሥር	1,430	59	4.13	42	2.94	*	*	*	*	Beet root
ካሮት	2,215	*	*	*	*	*	*	*	*	Carrot
ሽንኩርት	22,036	941	4.27	6,006	27.26	*	*	3,804	17.26	Onions
ድንች	54,007	248	0.46	2,451	4.54	13,471	24.94	7,495	13.88	Potatoes
ኑጭ ሽንኩርት	10,690	*	*	1,689	15.80	*	*	721	6.74	Garlic
ጎደሬ	42,271	*	*	*	*	*	*	*	*	Taro('Godere')
ሸከር ድንች	81,698	*	*	2,905	3.56	157	0.19	697	0.85	Sweet Potatoes
ሌሎች ጊዜያዊ ሰብሎች	77,927	*	*	2,434	3.12	1,435	1.84	2,257	2.90	Other Temporary
ቋሚ ሰብሎች	54,648			11,603	21.23	142	0.26			Permanent crops
አቡካዶ	7,212			*	*	*	*			Avocados
መዝ	31,886			8,508	26.68	*	*			Bananas
ዘይቱን	1,835			370	20.16	*	*			Guavas
ሎሚ	496			215	43.35	*	*			Lemons
ማንጎ	7,513			*	*	*	*			Mangoes
ብርቱካን	3,229			729	22.58	*	*			Oranges
ፓፓያ	2,239			350	15.63	*	*			Papayas
አናናስ	238			*	*	-	-			Pineapples
ንቃት ሰብሎች	724,936	23,319	3.22	38,327	5.29	7,387	1.02			Stimulant Crops
ጫት	204,649			26,975	13.18	5,524	2.70			Chat
ቡና	498,618	23,263	4.67	11,352	2.28	1,863	0.37			Coffee
ጌሾ	21,669			2,720	12.55	101	0.47			Hops(Gesh'o)
ሌሎች ቋሚ ሰብሎች	338,121			10,126						Other Permanent
አግሳት	301,979			2,493	0.83	1,230	0.41			Enset
ሸንኩራ አገዳ	23,342			6,767	28.99	*	*			Sugar Cane
ሌሎች	12,800			866	6.77	*	*			Others
የጠቅላላ ሰብሎች ድምር	13,359,441									All Crops
	Area	Area	%	Area	%	Area	%	Area	%	
	Total Crop	Improved Seed Applied		Irrigated		Pesticide Applied		Fertilizer Applied		Crop Name

\* These estimates could not be reported in this table because of high coefficient of variation (i.e less reliable). However they are consolidated in the total estimates.

\*\* Excluding Pastoralist Areas.

\*\* የኦርቶዶክስ አካባቢዎችን አይጨምርም::

- መረጃ አልተገኘም

- Data not available.

Created with

ሠንጠረዥ መ.34 በኢትዮጵያ\*\* ውስጥ በዋናው መዝር ወቅት በምርጥ ዘር፣ በመስኖ ዘዴ፣ በፀረ-ተባይ መድኃኒት እና ማዳበሪያ በመጠቀም የታረሰ ጠቅላላ መሬት ስፋት በዜጎች (ለግል ባለቤቶች ብቻ) 2004 ዓ.ም.

Table D.34 Estimates of Improved Seed, Irrigation, Pesticide and Fertilizer Applied Area and Their Percentage Distribution by Crop for Meher Season of Private Holdings in \*\* ETHIOPIA, 2011/2012 (In Hectares)

የሰብል ዓይነት	የምርት ማሳደጊያ ዘዴና አጠቃቀም										
	ጠቅላላ የታረሰ		በምርጥ ዘር በመጠቀም		በመስኖ ዘዴ በመጠቀም		ፀረ-ተባይ መድኃኒት በመጠቀም		በማዳበሪያ በመጠቀም		
	ስፋት	ስፋት	ዘር	%	ስፋት	%	ስፋት	%	ስፋት	%	
የብርዕና አገዳ እባላት	9,588,923	815,621	8.51%	74,647	1%	2,124,307	22%	15,783	0.16	Cereals	
ጤፍ	2,731,112	49,859	1.83%	10,126	0%	986,489	36%	2,494	0.09	Teff	
ገብስ	948,107	9,212	0.97%	3,771	0%	196,857	21%	*		Barley	
ሰንደ	1,437,485	120,649	8.39%	5,085	0%	661,947	46%	10,408	0.72	Wheat	
በቆሎ	2,054,724	629,589	30.64%	30,023	1%	72,884	4%	530	0.03	Maize	
ማሽላ	1,923,717	4,091	0.21%	24,628	1%	118,651	6%	*		Sorghum	
ዳጉሳ	432,561	*		743	0%	72,534	17%	*		Finger Millet	
አጃ	30,568	-		*		12,729	42%	-		Oats	
ሩዝ	30,649	*		*		*		*		Rice	
ጥራጥራዎች	1,616,809	8,824	0.55%	6,356	0%	79,122	5%	*		Pulses	
ባቂላ	457,560	1,443	0.32%	704	0%	17,614	4%	-		Horse Beans	
አተር	212,890	*		254	0%	8,862	4%	-		Field Peas	
ቦሎቂ	331,708	4,334	1.31%	2,026	1%	16,249	5%	-		Haricot Bean	
ሽምብራ	231,299	1,568	0.68%	766	0%	15,392	7%	-		Chick Peas	
ምሥር	109,895	612	0.56%			12,616	11%	-		Lentils	
ጓያ	179,866	*		1,079	1%	*		*		Vetch	
አኩሪ አተር	19,397	*		*		*		-		Soya bean	
አብሽ	39,965	-		526	1%	178	0%	-		Fenugreek	
ግብጦ	34,229	*		-		*		-		Gibto	
የቅባት እእባላት	880,871	3,773	0.43%	*		21,627	2%	*		Oil Seeds	
ኑግ	309,011	*		*		*		*		Neug	
ተልባ	116,541	*		60	0%	15,816	14%	-		Linseed	
ለውዝ	64,477	*		*		*		-		Ground Nuts	
ሱፍ	8,169	-		*		*		-		Safflower	
ሰሊጥ	337,505	1,944	0.58%	211	0%	2,707	1%	*		Sesame	
ጎመን ዘር	45,168	819	1.81%	*		*		*		Rape Seed	
አትክልት	160,052	2,451	1.53%	7,835	5%	9,120	6%	*		Vegetables	
ሰላጣ	164	*		*		-		-		Lettuce	
ጥቅል ጎመን	4,803	335	6.97%	723	15%	195	4%	*		Head Cabbage	
የአበሻ ጎመን	31,784	31	0.10%	693	2%	*		*		Ethiopian Cabbage	
ተማቲም	7,256	*		*		*		*		Tomatoes	
ቃሪያ	6,971	*		905	13%	112	2%	*		Green Peppers	
በርበሬ	108,806	1,727	1.59%	1,514	1%	4,902	5%	*		Red Peppers	
ቆስጣ	268	*		23	9%	*		*		Swiss Chard	
ሥራሥር	196,760	*		16,243	8%	21,613	11%	*		Root Crops	
ቀይ ሥር	2,485	112	4.51%	95	4%	75	3%	-		Beet root	
ካሮት	*	*		107		*		*		Carrot	
ሽንኩርት	30,478	*		7,527	25%	10,693	35%	*		Onions	
ድንች	59,509	212	0.36%	3,930	7%	10,091	17%	*		Potatoes	
ኑጭ ሽንኩርት	13,279	14	0.11%	1,318	10%	614	5%	*		Garlic	
ጎደሬ	39,696	*		80	0%	*		-		Taro('Godere')	
ስኳር ድንች	51,313	143	0.28%	3,186	6%	65	0%	-		Sweet Potatoes	
ሌሎች ጊዜያዊ ሰብሎች	111,175	*		5,371	5%	*		*		Other Temporary	
ቋሚ ሰብሎች	61,472		0.00%	8,532	14%	90	0%		0.00	Permanent crops	
አቡካዶ	9,024		0.00%	260	3%	*			0.00	Avocados	
መዝ	35,869		0.00%	5,703	16%	26	0%		0.00	Bananas	
ዘይቱን	1,357		0.00%	420	31%	*			0.00	Guavas	
ሎሚ	894		0.00%	283	32%	*			0.00	Lemons	
ማንጎ	8,058		0.00%	851	11%	*			0.00	Mangoes	
ብርቱካን	3,610		0.00%	700	19%	*			0.00	Oranges	
ፓፓያ	2,496		0.00%	308	12%	*			0.00	Papayas	
አናናስ	164		0.00%	*		*			0.00	Pineapples	
ንቃት ሰጪ ሰብሎች	718,222	24,210	3.37%	33,047	5%	6,775	1%			Stimulant Crops	
ጫት	179,776		0.00%	23,561	13%	6,019	3%		0.00	Chat	
ቡና	515,882	24,021	4.66%	9,486	2%	757	0%	*		Coffee	
ኔሾ	22,564		0.00%	2,680	12%	134	1%		0.00	Hops(Gesh o)	
ሌሎች ቋሚ ሰብሎች	352,920		0.00%		0%	442	0%		0.00	Other Permanent	
እንሰት	312,172		0.00%		0%	442	0%		0.00	Enset	
ሸንኩራ አገዳ	22,120		0.00%		0%	*			0.00	Sugar Cane	
ሌሎች	18,628		0.00%		0%	*			0.00	Others	
የጠቅላላ ሰብሎች ድምር	13,687,204	860,801	6.29%	165,604	1%	2,270,709	17%	17,005	0.12	All Crops	
	Area	Area	%	Area	%	Area	%	Area	%		
	Total Crop	Improved Seed Applied		Irrigated		Pesticide Applied		Fertilizer Applied		Crop Name	

\* These estimates could not be reported in this table because of high coefficient of variation (i.e less reliable). However they are consolidated in the total estimates.

\*\* Excluding Pastoralist Areas.

\*\* የአርብቶአደር አካባቢዎችን አይጨምርም::

- መረጃ አልተገኘም

- Data not available.

ሠንጠረዥ መ.35 በኢትዮጵያ \*\* ውስጥ በዋናው መከር ወቅት ማዳበሪያ የተደረገበት መሬት ስፋት  
በማዳበሪያ ዓይነት ለግል ባለይዞታዎች 2003 ዓ.ም.

Table D.35 'Estimates of Fertilizer Applied Area by Type of Fertilizer for  
Meher Season Crops of Private Holdings in ETHIOPIA \*\* 2010/2011  
(በካቴካር) (in Hectars)

የሰብል ዓይነት	ጠቅላላ	የተፈጥሮ	ዳፕ	ዩሪያ	ዳፕና ዩሪያ	
<b>የብርዕና አገዳ ስብሰታ</b>	5,614,619	1,150,106	1,903,658	<b>250,460</b>	<b>2,310,395</b>	<b>Cereals</b>
ጤፍ	1,866,446	112,007	652,729	120,391	981,319	<i>Teff</i>
ገብስ	566,046	161,415	296,165	9,545	98,921	Barley
ስንዴ	1,182,095	107,221	496,304	22,352	556,218	Wheat
በቆሎ	1,269,419	419,655	247,855	36,541	565,368	Maize
ማሽላ	476,450	317,518	56,978	46,157	55,798	Sorghum
ዳጉላ	233,039	26,294	143,456	14,360	48,929	Finger Millet
አጃ	13,828	3,072	9,967	*	701	Oats
ሩዝ	7,296	*	*	*	3,141	Rice
<b>ጥራጥሬዎች</b>	<b>349,018</b>	<b>178,134</b>	<b>128,966</b>	<b>5,843</b>	<b>36,074</b>	<b>Pulses</b>
ባቄላ	155,549	90,266	53,301	1,851	10,131	Faba Beans
አተር	60,837	23,123	28,265	748	8,701	Field Peas
ቦሎቄ	93,104	38,600	43,613	1,884	9,007	Haricot Bean
ሽምብራ	12,074	8,736	1,713	300	1,325	Chick Peas
ምሥር	12,166	5,818	1,253	516	4,580	Lentils
ጓያ	7,381	6,872	*	*	327	Grass Pea
አኩሪ አተር	3,488	2,509	*	-	914	Soya bean
አብሽ	3,894	2,084	517	294	999	Fenugreek
ግብጦ	525	*	*	*	*	<i>Gibto</i>
<b>የቅባት አብሰታ</b>	<b>73,562</b>	<b>38,219</b>	<b>14,717</b>	<b>10,794</b>	<b>9,832</b>	<b>Oil Seeds</b>
ኑግ	11,592	6,427	3,963	*	483	<i>Neug</i>
ተልባ	9,693	5,620	*	187	*	Linseed
ለውዝ	11,277	5,365	378	*	*	Ground Nuts
ሱፍ	2,325	555	*	618	508	Safflower
ሰሊጥ	28,368	16,461	5,167	4,459	2,281	Sesame
ጎመን ዘር	10,307	3,792	1,832	217	4,465	Rape Seed
<b>አትክልት</b>	<b>90,994</b>	<b>39,209</b>	<b>10,658</b>	<b>6,583</b>	<b>34,545</b>	<b>Vegetables</b>
ሰላጣ	25	20	-	-	*	Lettuce
ጥቅል ጎመን	1,510	1,033	*	*	181	Head Cabbage
የአበሻ ጎመን	22,741	21,966	365	85	326	Ethiopian Cabbage
ተማተም	2,366	721	97	*	1,354	Tomatoes
ቃሪያ	2,952	2,435	194	*	167	Green Peppers
በርበሬ	61,317	12,953	9,785	6,069	32,510	Red Peppers
ቆስጣ	83	81	*	-	*	Swiss Chard
<b>ሥራሥር</b>	<b>127,986</b>	<b>81,712</b>	<b>29,371</b>	<b>3,982</b>	<b>12,921</b>	<b>Root Crops</b>
ቀይ ሥር	1,011	810	100	-	*	Beet root
ካሮት	*	*	*	19	*	Carrot
ሽንኩርት	15,870	4,486	*	*	3,804	Onions
ድንች	42,151	14,620	18,746	1,290	7,495	Potatoes
ነጭ ሽንኩርት	7,513	6,303	*	171	721	Garlic
ጎደሬ	20,459	20,149	182	*	*	Taro('Godere')
ሰኳር ድንች	39,291	34,023	3,211	1,360	697	Sweet Potatoes
ሌሎች ጊዜያዊ	33,423	27,556	2,551	1,059	2,257	Others Temporary
<b>ቋሚ ሰብሰታ</b>	<b>18,591</b>	<b>17,360</b>				<b>Permanent crops</b>
አቡካዶ	3,511	3,425				Avocados
ሙዝ	10,546	9,842				Bananas
ዘይቱን	292	259				Guavas
ሎሚ	157	154				Lemons
ማንጎ	1,645	1,463				Mangoes
ብርቱካን	1,295	1,242				Oranges
ፓፓያ	989	953				Papayas
አናናስ	*	22				Pineapples
<b>ንቃት ሰጪ ሰብሰታ</b>	<b>213,765</b>	<b>158,929</b>				<b>Stimulant Crops</b>
ጫት	113,842	69,811				<i>Chat</i>
ቡና	90,003	80,387				Coffee
ኒሾ	9,920	8,731				Hops(Gesho)
<b>ሌሎች ቋሚ ሰብሰታ</b>						<b>Other Permanent</b>
አብሰታ	209,476	208,047				<i>Enset</i>
ሽንገራ አገዳ	9,685	6,788				Sugar Cane
ሌሎች	2,898	2,186				Others
<b>የጠቅላላ ሰብሰታ ድምር</b>	<b>13,230,705</b>	<b>3,567,545</b>	<b>4,166,057</b>	<b>548,135</b>	<b>4,807,395</b>	<b>All Crops</b>
	Total	Natural	Dap	Urea	Dap #NAME?	Crop Name

\* These estimates could not be reported in this table because of high coefficient of variation (i.e less reliable). However they are consolidated in the total estimates.

\*\* የአርብቶ አደር አካባቢዎችን አይጨምርም::

\*\*Excluding Pastoralist Areas

Created with

ሠንጠረዥ መ.36 በኢትዮጵያ \*\*ውስጥ በዋናው መኸር ወቅት ማዳበሪያ የተደረገበት መሬት ስፋት  
በማዳበሪያ ዓይነት ለግል ባለይዞታዎች 2004 ዓ.ም.

Table D.36 'Estimates of Fertilizer Applied Area by Type of Fertilizer for  
Meher Season Crops of Private Holdings in ETHIOPIA \*\* 2011/2012  
(በካሊታር) (IN Hectars)

የሰብል ዓይነት	ጠቅላላ	የተፈጥሮ	ዳፕ	ዩሪያ	ዳፕና ዩሪያ	
<b>የብርሶና አገዳ ስህላት</b>	<b>5,575,224</b>	<b>1,109,306</b>	<b>1,790,913</b>	<b>291,369</b>	<b>2,383,636</b>	<b>Cereals</b>
ጤፍ	1,886,369	105,155	632,205	130,468	1,018,542	Teff
ገብስ	520,112	151,701	233,597	13,548	121,266	Barley
ስንዴ	1,114,188	89,913	460,218	27,129	536,928	Wheat
በቆሎ	1,347,355	477,950	250,425	49,024	569,956	Maize
ማሸለ	436,515	263,931	49,698	52,272	70,613	Sorghum
ዳጉሳ	250,369	18,041	154,751	15,972	61,606	Finger Millet
አጃ	12,850	2,017	9,777	*	803	Oats
ሩዝ	7,466	*	*	*	3,922	Rice
<b>ጥፋጥፊዎች</b>	<b>389,357</b>	<b>172,656</b>	<b>159,373</b>	<b>8,464</b>	<b>48,863</b>	<b>Pulses</b>
ባቱላ	158,205	83,930	58,955	1,809	13,511	Faba Beans
አተር	61,453	19,050	32,997	562	8,844	Field Peas
በሎቂ	119,008	45,328	57,272	2,810	13,597	Haricot Bean
ሽምብራ	14,081	8,858	1,995	*	2,658	Chick Peas
ምሥር	13,341	4,673	2,665	760	5,242	Lentils
ጓያ	6,272	4,644	*	*	185	Grass Pea
አኩሪ አተር	2,294	744	*	*	*	Soya bean
አብሽ	13,030	4,932	*	683	3,793	Fenugreek
ግብጦ	1,674	497	412	*	634	Gibto
<b>የቅባት አባህላት</b>	<b>108,584</b>	<b>36,421</b>	<b>26,198</b>	<b>13,946</b>	<b>32,019</b>	<b>Oil Seeds</b>
ኑግ	14,898	5,299	7,461	*	1,866	Neug
ተልባ	10,658	5,417	3,411	577	1,254	Linseed
ለውዝ	11,372	4,842	1,169	*	*	Ground Nuts
ሱፍ	2,544	1,016	291	435	803	Safflower
ሰሊጥ	34,719	8,117	9,118	7,110	10,374	Sesame
ጎመን ዘር	34,393	11,730	4,749	974	16,940	Rape Seed
<b>አትክልት</b>	<b>113,945</b>	<b>46,288</b>	<b>12,990</b>	<b>10,876</b>	<b>43,792</b>	<b>Vegetables</b>
ሰላጣ	72	37	-	*	*	Lettuce
ጥቅል ጎመን	3,286	2,083	424	*	510	Head Cabbage
የአበሻ ጎመን	24,379	22,692	823	*	608	Ethiopian Cabbage
ተማቲም	5,071	1,091	661	*	*	Tomatoes
ቃሪያ	4,197	3,247	394	216	339	Green Peppers
በርበሬ	76,778	16,986	10,687	9,871	39,234	Red Peppers
ቆስጣ	163	152	*	*	*	Swiss Chard
<b>ጾራ ሥር</b>	<b>122,545</b>	<b>65,908</b>	<b>30,261</b>	<b>5,346</b>	<b>21,031</b>	<b>Root Crops</b>
ቀይ ሥር	1,707	1,192	340	66	*	Beet root
ካሮት	*	*	*	*	*	Carrot
ሽንኩርት	21,006	4,325	*	2,231	7,579	Onions
ድንች	47,292	15,484	20,102	1,413	10,292	Potatoes
ነጭ ሽንኩርት	9,929	7,276	495	445	1,713	Garlic
ጎደሬ	18,877	17,972	421	*	*	Taro('Godere')
ስኳር ድንች	21,494	17,605	1,943	849	1,097	Sweet Potatoes
ሌሎች ጊዜያዊ	49,366	31,816	5,976	5,189	6,386	Others Temporary
<b>ቋሚ ስብሎች</b>	<b>21,426</b>	<b>19,002</b>				<b>Permanent crops</b>
አቡካዶ	4,193	4,063				Avocados
ሙዝ	12,315	10,557				Bananas
ዘይቱን	422	372				Guavas
ሎሚ	288	277				Lemons
ማንጎ	1,806	1,543				Mangoes
ብርቱካን	1,361	1,227				Oranges
ፓፓያ	1,024	948				Papayas
አናናስ	17	17				Pineapples
<b>ንቃት ሰጪ ስብሎች</b>	<b>192,784</b>	<b>140,951</b>				<b>Stimulant Crops</b>
ጫት	93,367	56,740				Chat
ቡና	88,294	74,568				Coffee
ጌሾ	11,124	9,643				Hops(Gesho)
<b>ሌሎች ቋሚ ስብሎች</b>	<b>230,369</b>	<b>220,870</b>				<b>Other Permanent</b>
አግሳስ	216,826	214,968				Enset
ሽንኩራ አገዳ	7,634	5,902				Sugar Cane
ሌሎች	5,909	*				Others
<b>የጠቅላላ ስብሎች ድምር</b>	<b>6,803,601</b>	<b>1,848,304</b>	<b>2,048,444</b>	<b>348,973</b>	<b>2,557,880</b>	<b>All Crops</b>
	Total	Natural	Dap	Urea	Dap + Urea	Crop Name

\* These estimates could not be reported in this table because of high coefficient of variation  
(i.e less reliable).However they are consolidated in the total estimates.

\*\* የአርብቶ አደር አካባቢዎችን አይጨምርም::

\*\*Excluding Pastoralist Areas

- መረጃ አልተገኘም

- Data not available.

Created with



nitroPDF

professional

download the free trial online at [nitropdf.com/professional](http://nitropdf.com/professional)



ሆ.ጋ.ጠረገር መ.37 በኢትዮጵያ\*\* ውስጥ በዋናው መሽር ወቅት በጥቅም ላይ የዋለ የማዳበሪያ መጠንና ዓይነት ለግል ባለይዞታዎች 2002 ዓ.ም.

Table D.37' Estimates of Quantity of Commercial Fertilizer Applied by Type of Fertilizer for Meher Season Crops of Private Holdings in ETHIOPIA \* \* 2009/2010 (በኩንጥራት)

የሰብል ስም	ጠቅላላ	ዳፕ	ዩሪያ	ዳፕና ዩሪያ	
<b>የብርዕና አገዳ አባላት</b>	3,345,830	949,731	166,397	2,229,702	<b>Cereals</b>
ጤፍ	1,121,472	255,850	77,469	788,154	<i>Teff</i>
ገብስ	303,346	173,234	12,083	118,029	Barley
ስንዴ	954,573	246,992	31,715	675,866	Wheat
በቆሎ	745,770	153,849	35,457	556,465	Maize
ማሽላ	93,759	34,499	6,487	52,773	Sorghum
ዳጉሳ	115,911	79,777	2,342	33,792	Finger Millet
አጃ	8,683	5,371	*	2,976	Oats
ሩዝ	2,316	*	*	*	Rice
<b>ጥራጥሬዎች</b>	410,534	111,134	13,311	286,090	<b>Pulses</b>
ባቂላ	141,462	49,033	6,181	86,248	Faba Beans
አተር	62,199	27,768	1,027	33,404	Field Peas
ቦሎቂ	48,176	23,139	*	22,424	Haricot Bean
ሽምብራ	65,693	3,650	1,265	60,777	Chick Peas
ምሥር	51,906	3,275	*	48,399	Lentils
ጓያ	35,084	2,227	*	31,277	Grass Pea
አኩሪ አተር	307	67	*	239	Soya bean
አብሽ	3,568	772	*	2,511	Fenugreek
ግብጦ	2,139	*	*	810	<i>Gibto</i>
<b>የቅባት አባላት</b>	176,981	69,165	5,351	102,465	<b>OilSeeds</b>
ኑግ	64,947	29,129	907	34,912	Neug
ተልባ	33,766	21,871	554	11,341	Linseed
ለውዝ	3,043	1,754	760	*	Ground Nuts
ሱፍ	1,696	*	*	*	Safflower
ሰሊጥ	4,082	*	340	*	Sesame
ጎመን ዘር	69,447	13,129	*	54,314	Rape Seed
<b>አትክልት</b>	79,657	24,238	9,397	46,023	<b>Vegetables</b>
ሰላጣ	*	-	*	*	Lettuce
ጥቅል ጎመን	1,516	419	*	867	Head Cabbage
የአበሻ ጎመን	12,527	6,979	*	5,184	Ethiopian Cabbage
ተማቲም	2,119	*	*	*	Tomatoes
ቃሪያ	5,792	1,613	797	3,382	Green Peppers
በርበሬ	57,513	14,737	7,845	34,932	Red Peppers
ቆስጣ	*	-	*	*	Swiss Chard
<b>ሥራሥር</b>	97,916	36,447	8,110	53,359	<b>Root Crops</b>
ቀይ ሥር	1,627	*	*	1,044	Beet root
ካሮት	2,059	942	*	*	Carrot
ሽንኩርት	18,411	2,453	*	*	Onions
ድንች	45,519	24,301	*	17,405	Potatoes
ነጭ ሽንኩርት	18,316	4,157	1,488	12,671	Garlic
ጎደሬ	2,603	1,165	34	1,405	Taro('Godere')
ስኳር ድንች	9,380	2,856	*	5,547	Sweet Potatoes
ሌሎች ጊዜያዊ	19,986	4,905	*	12,026	Others Temporary
<b>ቋሚ ስብሎች</b>	-	-	-	-	<b>Permanent crops</b>
ፍራፍሬዎች	-	-	-	-	Fruit Crops
አቡካዶ	-	-	-	-	Avocados
ሙዝ	-	-	-	-	Bananas
ዘይቱን	-	-	-	-	Guavas
ለሙሊ	-	-	-	-	Lemons
ማንጎ	-	-	-	-	Mangoes
ብርቱካን	-	-	-	-	Oranges
ፓፓያ	-	-	-	-	Papayas
አናናስ	-	-	-	-	Pineapples
ሌሎች	-	-	-	-	Others
<b>ንቃት ሰጪ ስብሎች</b>	-	-	-	-	<b>Stimulant Crops</b>
ጫት	-	-	-	-	Chat
ቡና	-	-	-	-	Coffee
ጌሾ	-	-	-	-	Hops(Gesho)
ሌሎች	-	-	-	-	Others
<b>ሌሎች ቋሚ ስብሎች</b>	-	-	-	-	<b>Other Permanent</b>
አንሰት	-	-	-	-	<i>Enset</i>
ሽንኩራ አገዳ	-	-	-	-	Sugar Cane
ሌሎች	-	-	-	-	Others
	4,227,495	1,229,530	213,026	2,784,939	<b>All Crops</b>
<b>የጠቅላላ ስብሎች ድምር</b>	Total	Dap	Urea	Dap + Urea	Crop Name

\* These estimates could not be reported in this table because of high coefficient of variation

(i.e less reliable).However they are consolidated in the total estimates.

\*\* የአርብቶ አደር አካባቢዎችን አይጨምርም::

\*\*Excluding Pastoralist Areas

Created with

Table D.38' Estimates of Quantity of Commercial Fertilizer Applied by Type of Fertilizer for Meher Season Crops of Private Holdings in ETHIOPIA \* \* 2010/2011 (in Quintals)

የሰብል ስም	ጠቅላላ	ዳፕ	ዩሪያ	ዳፕና ዩሪያ	
<b>የብርዕና አገዳ አባላት</b>	4,574,906	1,305,165	161,211	3,108,531	<b>Cereals</b>
ጤፍ	1,486,845	386,909	63,686	1,036,249	Teff
ጉበስ	334,448	217,001		110,585	Barley
ስንዴ	1,238,204	389,066	18,219	830,919	Wheat
በቆሎ	1,266,221	186,750	36,269	1,043,201	Maize
ማሽላ	106,917	26,721	29,913	50,282	Sorghum
ዳጉላ	131,504	93,814	5,500	32,189	Finger Millet
አጃ	7,374	4,731	*	*	Oats
ሩዝ	3,394	*	*	2,519	Rice
<b>ጥራጥሬዎች</b>	<b>171,094</b>	<b>98,275</b>	<b>6,513</b>	<b>66,306</b>	<b>Pulses</b>
ባቂላ	71,483	45,587	1,117	24,779	Faba Beans
አተር	30,762	20,127	476	10,159	Field Peas
ቦሎቂ	57,490	30,741	3,983	22,766	Haricot Bean
ሽምብራ	2,357	835	*	1,185	Chick Peas
ምሥር	4,856	567	203	4,086	Lentils
ጓያ	436	*	*	394	Grass Pea
አኩሪ አተር	1,241	*	-	1,196	Soya bean
አብሽ	1,689	119	156	1,414	Fenugreek
ግብጦ	780	217	*	*	Gibto
<b>የቅባት አባላት</b>	<b>81,205</b>	<b>13,733</b>	<b>8,231</b>	<b>59,241</b>	<b>Oil Seeds</b>
ኑግ	2,615	1,244	*	*	Neug
ተልባ	*	1,215	*	*	Linseed
ለውዝ	*	436	*	*	Ground Nuts
ሱፍ	4,192	*	870	1,785	Safflower
ሰሊጥ	8,681	2,144	1,809	*	Sesame
ጎመን ዘር	55,892	7,158	696	48,038	Rape Seed
<b>አቅክልቲ</b>	<b>111,316</b>	<b>17,204</b>	<b>11,487</b>	<b>82,625</b>	<b>Vegetables</b>
ሰላጣ	*	-	-	*	Lettuce
ጥቅል ጎመን	1,421	*	125	593	Head Cabbage
የአበሻ ጎመን	4,040	983	*	2,511	Ethiopian Cabbage
ተማተም	3,486	*	*	3,190	Tomatoes
ቃሪያ	545	185	86	274	Green Peppers
በርበሬ	101,760	15,138	10,629	75,993	Red Peppers
ቆስጣ	*	*	-	*	Swiss Chard
<b>ሥራሥር</b>	<b>79,943</b>	<b>34,733</b>	<b>6,726</b>	<b>38,483</b>	<b>Root Crops</b>
ቀይ ሥር	*	287	-	*	Beet root
ካሮት	*	*	18	*	Carrot
ሽንኩርት	21,060	4,770	*	14,273	Onions
ድንች	43,017	24,795	2,044	16,178	Potatoes
ጎጭ ሽንኩርት	4,440	636	586	3,219	Garlic
ጎደሬ	737	191	*	*	Taro('Godere')
ስኳር ድንች	8,674	3,349	1,793	3,533	Sweet Potatoes
ሌሎች ጊዜያዊ	18,236	3,803	2,037	12,396	Others Temporary
<b>ቋሚ ሰብሎች</b>	-	-	-	-	<b>Permanent crops</b>
ፍራፍረዎች	-	-	-	-	Fruit Crops
አቡካዶ	-	-	-	-	Avocados
መዝ	-	-	-	-	Bananas
ዘይቱን	-	-	-	-	Guavas
ለሚ	-	-	-	-	Lemons
ማንጎ	-	-	-	-	Mangoes
ብርቱካን	-	-	-	-	Oranges
ፓፓያ	-	-	-	-	Papayas
አናናስ	-	-	-	-	Pineapples
ሌሎች	-	-	-	-	Others
<b>ንቃት ሰጪ ሰብሎች</b>	-	-	-	-	<b>Stimulant Crops</b>
ጫት	-	-	-	-	Chat
ቡና	-	-	-	-	Coffee
ጌሾ	-	-	-	-	Hops(Gesho)
ሌሎች	-	-	-	-	Others
<b>ሌሎች ቋሚ ሰብሎች</b>	-	-	-	-	<b>Other Permanent</b>
አግሰት	-	-	-	-	Enset
ሸንኮራ አገዳ	-	-	-	-	Sugar Cane
ሌሎች	-	-	-	-	Others
<b>የጠቅላላ ሰብሎች ድምር</b>	<b>10,043,261</b>	<b>2,938,629</b>	<b>374,383</b>	<b>6,709,092</b>	<b>All Crops</b>
	Total	Dap	Urea	Dap + Urea	Crop Name

\* These estimates could not be reported in this table because of high coefficient of variation (i.e less reliable).However they are consolidated in the total estimates

\*\* የአርብቶ አደር አካባቢዎችን አይጨምርም::

\*\*Excluding Pastoralist Areas



ሠንጠረዥ መ.39 በኢትዮጵያ\*\* ውስጥ በዋናው መኸር ወትት በጥቅም ላይ የዋለ የማዳበሪያ መጠንቻና ዓይነት ለግል ባለይዞታዎች 2004 ዓ.ም.

Table D.39 Estimates of Quantity of Commercial Fertilizer Applied by Type of Fertilizer for Meher Season Crops of Private Holdings in ETHIOPIA \*\* 2011/2012 (በኩንታል) (in Quintals)

የሰብል ስም	ጠቅላላ	ዳፕ	ዩሪያ	ዳፕና ዩሪያ	
<b>የብርሶና አገዳ አበሃሎች</b>	3,807,014	4,001,672	729,494	265,385	<b>Cereals</b>
ጤፍ	1,471,172	2,812,134	388,400	135,714	Teff
ገብስ	313,891	947,058	11,284	19,754	Barley
ስንዴ	719,527	282,853	33,708	94,798	Wheat
በቆሎ	*	591,021	131,356	9,258	Maize
ማሽላ	*	*	*	3,869	Sorghum
ዳጉላ	146,331	85,278	15,479	1,785	Finger Millet
አጃ	*	129,067	*	*	Oats
ሩዝ	*	*	*	*	Rice
<b>ጥሬጥሬዎች</b>	219,444	*	11,958	6,385	<b>Pulses</b>
ባቄላ	93,311	201,101	2,714	1,202	Faba Beans
አተር	31,962	89,395	474	*	Field Peas
ቦሎቄ	81,652	30,267	6,149	709	Haricot Bean
ሽምብራ	3,466	74,795	*	*	Chick Peas
ምሥር	4,728	1,126	486	*	Lentils
ጓያ	*	2,756	*	*	Grass Pea
አኩራ አተር	661	*	164	-	Soya bean
አብሽ	1,374	*	386	*	Fenugreek
ግብጦ	1,144	821	*	-	Gibto
<b>የቅባት አበሃሎች</b>	*	977	33,090	1,759	<b>Oil Seeds</b>
ኑግ	2,735	*	*	*	Neug
ተልባ	*	2,071	*	*	Linseed
ለውዝ	*	2,428	*	-	Ground Nuts
ሱፍ	*	1,301	*	*	Safflower
ሰሊጥ	7,277	*	3,054	*	Sesame
ጎመን ዘር	*	4,008	5,943	995	Rape Seed
<b>አትክልት</b>	*	*	25,314	2,946	<b>Vegetables</b>
ሰላጣ	*	*	*	-	Lettuce
ጥቅል ጎመን	1,536	-	*	*	Head Cabbage
የአበሻ ጎመን	4,907	889	*	*	Ethiopian Cabbage
ተማተም	*	3,492	*	*	Tomatoes
ቃሪያ	1,968	852	471	*	Green Peppers
በርበሬ	*	1,101	18,918	*	Red Peppers
ቆስጣ	*	*	*	*	Swiss Chard
<b>ሥራሥር</b>	215,470	*	*	*	<b>Root Crops</b>
ቀይ ሥር	616	122,353	163	*	Beet root
ካሮት	208	447	*	*	Carrot
ሽንኩርት	*	106	*	*	Onions
ድንች	84,496	*	3,383	1,086	Potatoes
ነጭ ሽንኩርት	8,305	*	*	*	Garlic
ጎደሬ	*	1,137	2,360	-	Taro('Godere')
ስኳር ድንች	*	*	1,380	*	Sweet Potatoes
ሌሎች ጊዜያዊ	71,452	*	20,043	*	Others Temporary
<b>ቋሚ ሰብሎች</b>					<b>Permanent crops</b>
<b>ፍራፍረዎች</b>					<b>Fruit Crops</b>
አቡካዶ					Avocados
ሙዝ					Bananas
ዘይቱን					Guavas
ሎማ					Lemons
ማንጎ					Mangoes
ብርቱካን					Oranges
ፓፓያ					Papayas
አናናስ					Pineapples
ሌሎች					Others
<b>ንቃት ሰጪ ሰብሎች</b>					<b>Stimulant Crops</b>
ሜት					Chat
ቡና					Coffee
ጊሾ					Hops(Gesho)
ሌሎች					Others
<b>ሌሎች ቋሚ ሰብሎች</b>					<b>Other Permanent</b>
አበጎሰት					Enset
ሽንኩራ አገዳ					Sugar Cane
ሌሎች					Others
<b>የጠቅላላ ሰብሎች ድምር</b>	<b>5,246,541</b>	<b>4,001,672</b>	<b>959,866</b>	<b>285,004</b>	<b>All Crops</b>
	<b>Total</b>	<b>Dap</b>	<b>Urea</b>	<b>Dap + Urea</b>	<b>Crop Name</b>

\* These estimates could not be reported in this table because of high coefficient of variation (i.e less reliable).However they are consolidated in the total estimates.

\*\* የአርብቶ አደር አካባቢዎችን አይጨምርም::

\*\*Excluding Pastoralist Areas

Created with - መሪ  
- Dat

Fig:1.1 A Production Of Major Crops For Main(meher)season 2011/12(2004E.C)

