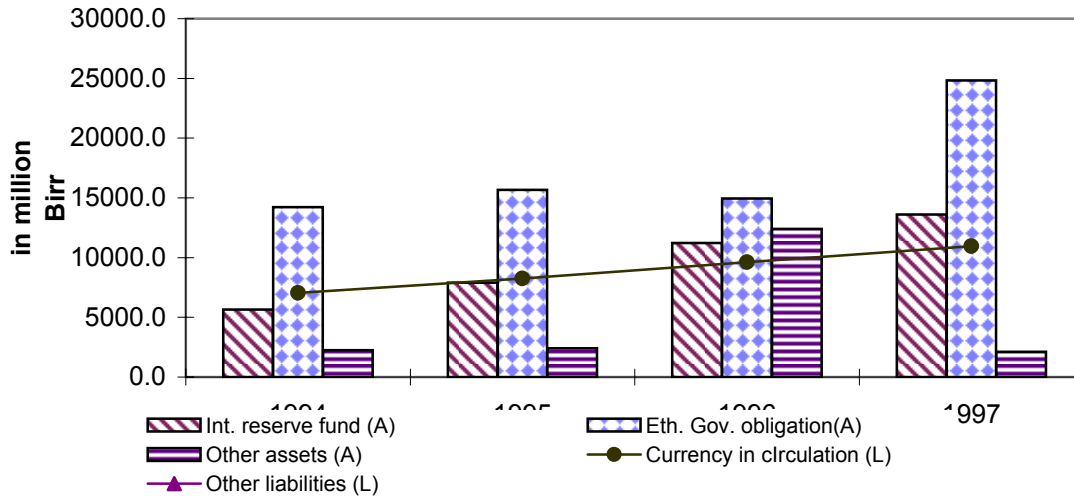
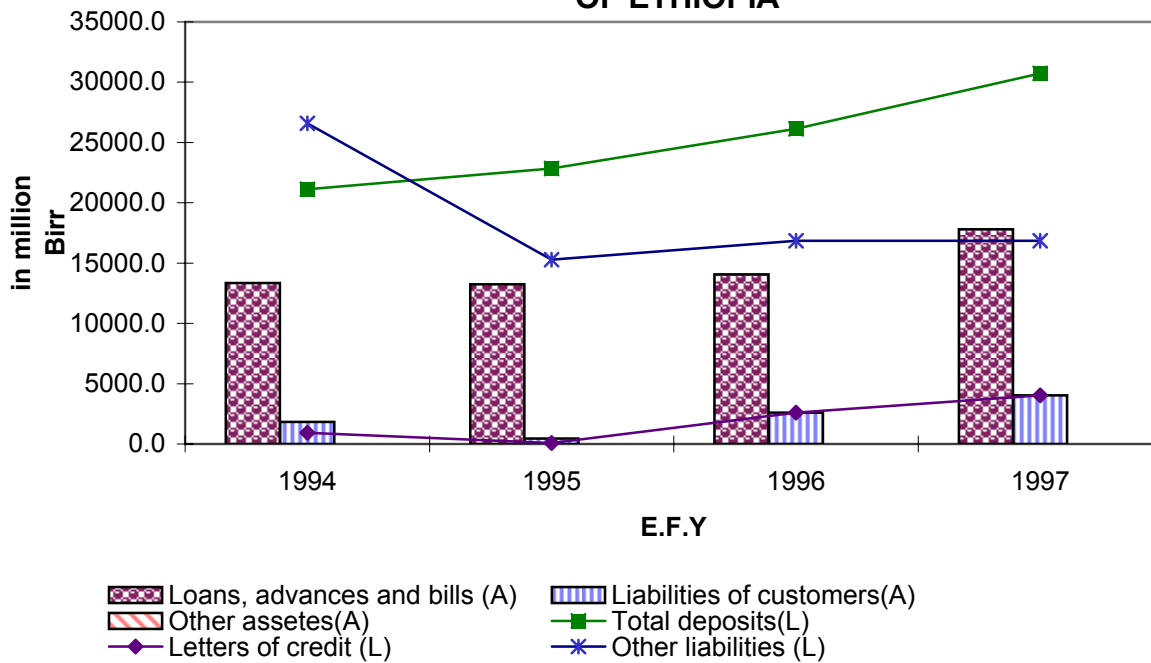


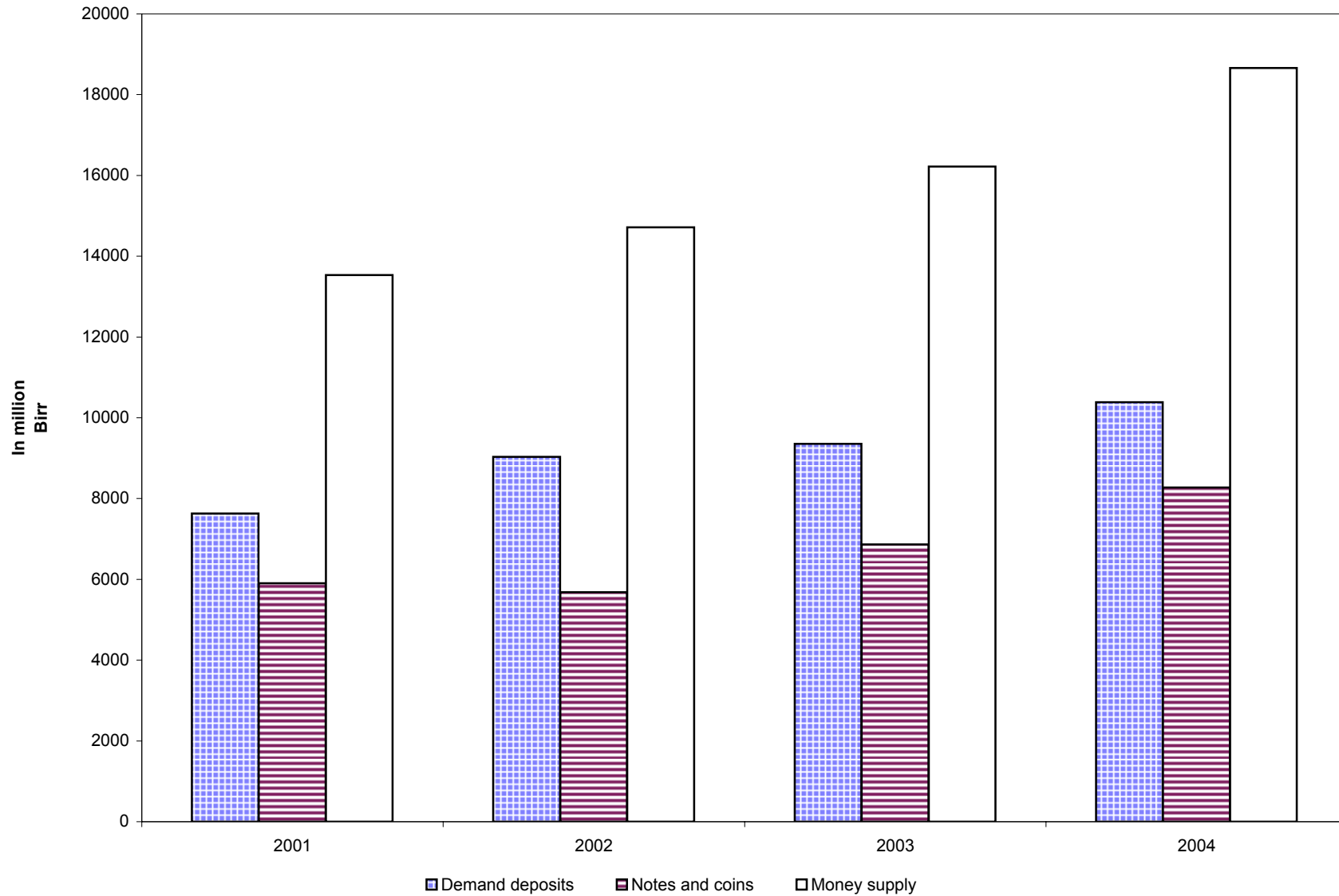
L1. CONDITION OF NATIONAL BANK OF ETHIOPIA



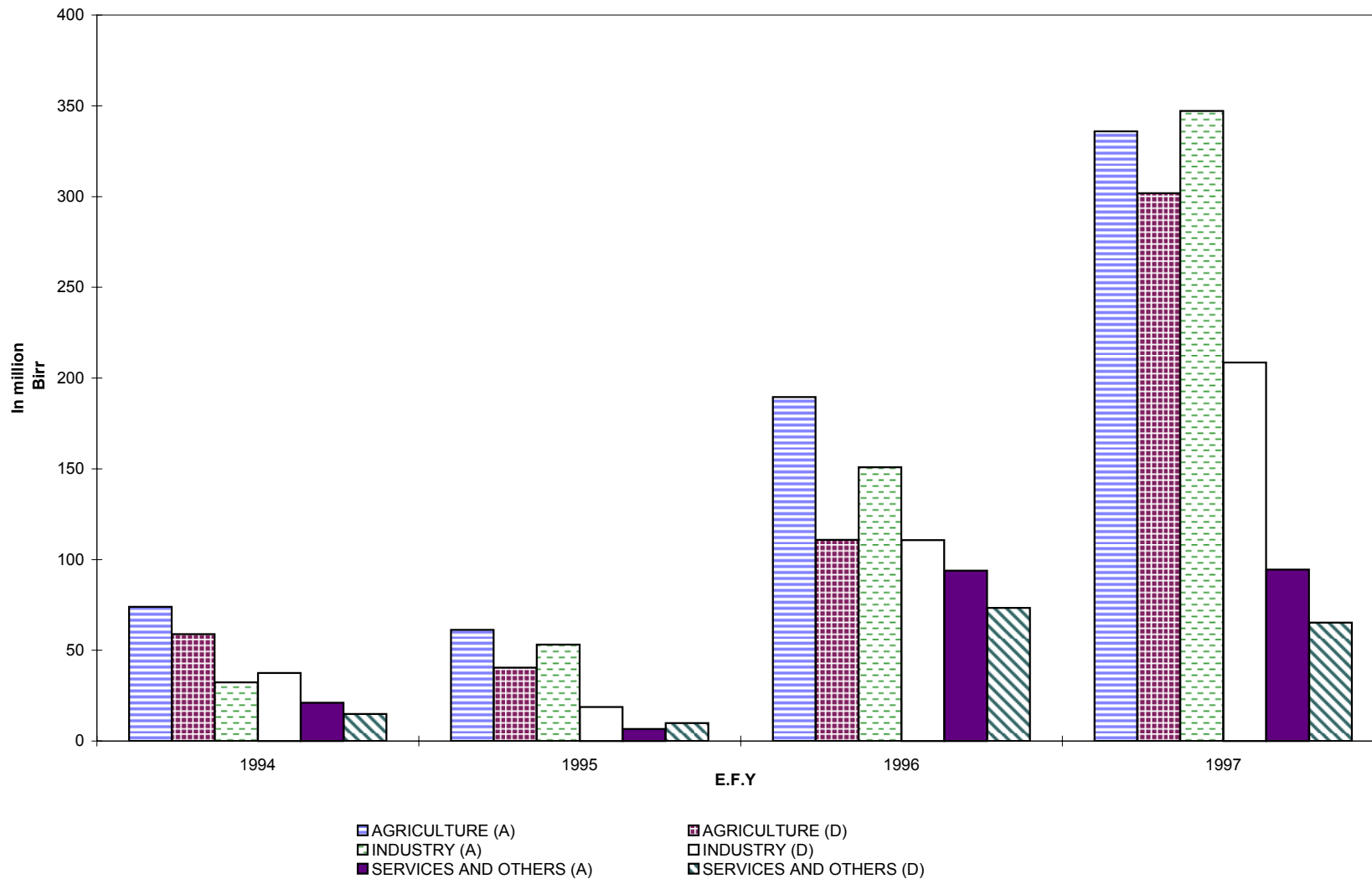
L2. CONDITION OF COMMERCIAL BANK OF ETHIOPIA



L3. COMPOSITION OF MONEY SUPPLY



L4. LOANS APPROVED AND DISBURSED BY THE DEVELOPMENT BANK OF ETHIOPIA



አጠቃላይ የብሔራዊ ባንክ የሂሳብ መግለጫ
CONSOLIDATED STATEMENT OF CONDITION
OF NATIONAL BANK OF ETHIOPIA

ሠንጠረዥ ት.1 TABLE L.1

በሚሊዮን ብር IN MILLION BIRR

	1994		1995		1996		1997		
	ታህሳስ	ሰኔ	ታህሳስ	ሰኔ	ታህሳስ	ሰኔ	ታህሳስ	ሰኔ	
ሀብቶች									ASSETS
አንተርናሽናል መጠበቂያ ሂሳብ	3654.6	5663.0	7705.4	7902.2	9159.0	11215.7	13537.4	13613.6	INTERNATIONAL RESERVE FUND
ቅድሚያ ክፍያዎችና ያልተጣሩ ሂሳቦች	394.3	394.3	394.3	394.3	113.7	53.7	53.7	-	ADVANCES AND UNCLEARED EFFECTS
በአለም አቀፍ ድርጅቶች የተደረገ ኢንቨስትመንት	519.3	519.3	519.3	519.3	519.3	519.3	616.2	616.2	INVESTMENT IN INTERNATIONAL INSTITUTIONS
የንግድ ውል ሰነድ	-	-	-	-	-	-	-	-	CUSTOMERS LIABILITY ON DOCUMENTARY CREDITS
የኢትዮጵያ መንግስት ግዳጅ	12524.9	14219.9	15100.4	15664.4	15665.4	14957.3	22726.2	24842.2	ETHIOPIAN GOVERNMENT OBLIGATION
የብር ማንቲሞች	8.3	8.2	8.2	8.7	2.8	0.0	-	0.0	SILVER COINS
የማይንቀሳቀሱ ሀብቶች	100.7	113.4	126.0	140.6	146.8	155.9	169.5	172.1	FIXED ASSETS
ሌሎች ሂሳቦች	1233.4	1213.2	1130.9	1347.6	1328.1	1592.6	1483.0	1333.4	OTHER ACCOUNTS
የሀብት ድምር	18435.5	22131.3	24984.5	25977.1	26935.1	28494.5	38586.0	40577.5	TOTAL ASSETS
ዕዳዎች									LIABILITIES
በሥራ ላይ የሚገኝ ገንዘብ	6406.4	7034.1	7301.0	8240.2	8592.3	9606.0	8986.0	10961.7	CURRENCY OUT SIDE BANK
ሌሎች በቅርብ ተጠያቂ ዕዳዎች	-	-	-	-	-	-	-	-	OTHER SIGHT LIABILITIES
የዱቤ ሰነዶች	196.0	105.9	113.3	114.2	206.2	145.1	158.1	104.3	COMMERCIAL LETTERS OF CREDIT
የአለም አቀፍ ድርጅቶች በስም የማይዘዋወሩ የውጭ ሰነዶች	996.6	996.6	996.6	996.6	996.6	996.6	996.6	996.6	INTERNATIONAL INSTITUTIONS (NON-TRANSFERABLE PROMISSARY NOTES)
መጠበቂያዎች	310.4	302.6	300.9	319.7	38.1	38.2	38.6	40.2	PROVISIONS
ሌሎች ሂሳቦች	1311.8	1736.2	1667.4	1820.5	2246.1	2059.1	3743.7	3355.3	OTHER ACCOUNTS
የካፒታልና የጠቅላላ መጠበቂያ ሂሳብ	1980.5	2209.3	2544.3	2762.1	2849.3	3208.7	3302.7	3266.9	CAPITAL AND GENERAL RESERVE FUND
ተቀማጭ	7233.7	9746.7	12061.1	11723.8	12006.5	12440.7	21360.3	21852.3	DEPOSITS
የዕዳዎች ድምር	18435.4	22131.4	24984.6	25977.1	26935.1	28494.4	38586.0	40577.3	TOTAL LIABILITIES
	DEC.	JUNE	DEC.	JUNE	DEC.	JUNE	DEC.	JUNE	
	2001	2002	2003	2004	2005				

ከኢትዮጵያ ብሔራዊ ባንክ ሂሳብ መምሪያ የተገኘ
 SOURCE : NATIONAL BANK OF ETHIOPIA, ACCOUNTS DEPARTMENT

አጠቃላይ የንግድ ባንኮች የሂሳብ ሁኔታ መግለጫ
 CONSOLIDATED STATEMENT OF CONDITION
 OF COMMERCIAL BANK OF ETHIOPIA

ሠንጠረዥ ቸ.2 TABLE L.2

በሚሊዮን ብር IN MILLION BIRR

	1994		1995		1996*		1997			
	ታህሳስ	ሰኔ	ታህሳስ	ሰኔ	ታህሳስ	ሰኔ	ታህሳስ	ሰኔ		
ሀብቶች									ASSETS	
በእጅ ያለ ጥራ ገንዘብ	800.1	768.4	827.7	852.9	929.7	848.9	989.8	1335.3	CASH ON HAND	
ያልተጣሩ የአገር ውስጥ ሂሳቦች	5744.2	7466.2	7781.7	10412.1	6879.8	11548.2	12123.3	14085.9	DOMESTIC UNCLEARED EFFECTS	
ያልተጣሩ የውጭ አገር ሂሳቦች	689.6	770.9	501.2	447.8	442.9	617.8	448.0	737.8	FOREIGN UNCLEARED EFFECTS	
የኢትዮጵያ መንግስት የግምጃ ቤት ሰነዶች	2391.7	3405.5	7029.1	8062.9	8511.5	11078.0	3510.3	4994.7	ETHIOPIAN GOVERNMENT TREASURY BILLS	
ብድሮች በቅድሚያ የተከፈሉ ሂሳቦችና ቅናሽ የተደረገባቸው ሰነዶች	13420.7	13348.7	13058.6	13235.9	14011.6	14057.8	16684.3	17795.2	CLAIMS ON NON-CENTRAL GOV'T - LOANS, ADVANCES AND BILLS DISCOUNTED	
አንበሳት መንገድ	7.7	7.7	37.8	40.2	106.1	206.0	911.7	3270.1	- INVESTMENTS	
ንግድ ባንኮች	161.2	128.2	114.5	98.3	96.8	92.4	78.2	61.3	-COMMERCIAL BANKS	
አንጥልጥል ሂሳቦች	580.8	472.5	32.6	27.3	30.9	29.6	28.5	28.9	SUSPENSE ACCOUNTS	
የባንክ ቤት የቢሮ ስቃዎችና ሌሎች ቋሚ ንብረቶች	565.8	613.7	639.0	652.5	678.3	735.9	775.7	810.8	PREMISES FURNITURE AND OTHER ASSETS	
ሌሎች ከውጭ አገር የሚገኙ ሀብቶች	47.9	69.4	45.7	48.9	33.1	25.5	26.2	22.5	OTHER FOREIGN ASSETS	
ለንግድ ክሬዲቶች የደንበኞች ስዳ	1861.7	1825.7	502.1	454.7	3448.1	2592.2	3362.3	4023.2	LIABILITIES OF CUSTOMERS FOR LETTERS OF CREDIT, ACCEPTANCE ETC.	
ሌሎች ሂሳቦች	215.8	377.3	2963.4	4242.7	2516.5	2720.9	2645.1	2848.7	OTHER CONTINGENT ASSETS	
በብሔራዊ ባንክ ተቀማጭ ገንዘብ	1716.7	2696.4	3255.1	3816.9	4232.4	4789.7	13528.1	12739.7	DEPOSITS WITH NATIONAL BANK	
በውጭ አገር ባንኮች ተቀማጭ ገንዘብ	1933.1	2284.4	2828.9	3338.9	4336.7	2999.8	2137.2	2726.6	DEPOSIT WITH FOREIGN BANKS	
በኢርትራ ባንኮች ተቀማጭ ገንዘብ	2369.7	2369.7	2369.7	2369.7	2369.7	2369.7	2369.7	2369.7	DEPOSIT WITH ERITREAN BANKS	
ከአገር ውስጥና ከውጭ አገር ባንኮች ተቀማጭ ሂሳቦች	214.3	420.6	274.8	388.8	255.8	421.8	418.9	499.4	DUE FROM OTHER DOMESTIC AND FOREIGN BANKS	
ከመንግስት የሚሰበሰቡ	5107.8	5107.8	2213.8	2480.7	2480.7	2665.2	2549.7	2264.1	CLAIMS ON GOVERNMENT	
የሀብት ድምር	37828.8	42133.1	44475.7	50971.2	51360.6	57799.4	62587.0	70613.9	TOTAL ASSETS	
ስዳዎች									LIABILITIES	
የማዕከላዊ መንግስት ያልሆኑ ተቀማጭ									NON-CENTRAL GOV'T DEPOSITS	
ተንቀሳቃሽ ሂሳብ	7815.4	8984.6	9035.1	9214.3	9352.6	10559.3	10713.3	11808.2	DEMAND DEPOSITS	
የቁጠባና የጊዜ ገደብ ተቀማጮች	11551.5	12139.5	12878.6	13643.4	14576.5	15590.0	17219.1	18920.7	SAVING AND TIME DEPOSITS	
የተቀማጭ ገንዘብ ድምር	19366.9	21124.1	21913.7	22857.7	23929.1	26149.3	27932.4	30728.9	TOTAL DEPOSITS	
የመንግስት ተቀማጭ ገንዘብ	1287.1	1514.9	2044.7	2701.4	3187.9	3933.3	5079.8	5124.8	GOV'T DEPOSITS	
የውጭ ስዳ	1592.9	1703.3	1654.3	1674.7	1848.4	1889.5	1680.8	1979.8	FOREIGN LIABILITIES	
የካፒታል ሂሳቦች									CAPITAL ACCOUNT	
አክሲዮን	1152.6	1218.8	1245.8	1282.2	1336.0	1364.4	1430.5	1461.2	SHARES	
የባንኮች ተቀማጭ ገንዘብ	88.0	73.6	79.8	66.9	72.6	708.3	746.1	837.8	RESERVES	
ሌሎች	1313.1	925.7	1203.2	815.1	1392.9	557.9	911.0	560.6	OTHER	
ሌሎች ስዳዎች	-	-	-	-	-	-	-	-	-	OTHER LIABILITIES
የካፒታል ሂሳቦች	-	-	-	-	-	-	-	-	-	CAPITAL FUNDS
ሌሎች ሂሳቦች	11700.5	14423.5	16010.0	21271.0	15775.3	20430.4	21288.7	25763.1	OTHER ACCOUNTS	
የዱቤ ሰነዶች	1064.2	922.4	97.3	75.7	3636.7	2592.2	3362.3	4023.2	LETTERS OF CREDIT, ACCEPTANCE, ETC.	
ብድሮች	263.4	226.7	226.7	226.7	181.6	173.9	155.4	134.1	BORROWINGS	
የስዳዎችና የካፒታል ድምር	37828.7	42133.0	44475.5	50971.4	51360.5	57799.2	62587.0	70613.5	TOTAL LIABILITIES AND CAPITAL	
DEC.	JUNE	DEC.	JUNE	DEC.	JUNE	DEC.	JUNE			
2001	2002		2003		2004*		2005			

ከኢትዮጵያ ብሔራዊ ባንክ ሂሳብ መምሪያ የተገኘ

SOURCE : NATIONAL BANK OF ETHIOPIA, ACCOUNTS DEPARTMENT

* የታረመ

* REVISED

የሌሎች ገንዘብ ነክ ድርጅቶች የሂሳብ ሁኔታ መግለጫ
STATEMENT OF CONDITION OF OTHER FINANCIAL INSTITUTIONS

ሠንጠረዥ ቸ.3 TABLE L.3

በሚሊዮን ብር

IN MILLION BIRR

	1994		1995		1996		1997		
	ታህሳስ	ሰኔ	ታህሳስ	ሰኔ	ታህሳስ	ሰኔ	ታህሳስ	ሰኔ	
ሀብቶች									ASSETS
በጥራ ገንዘብና በአገር ውስጥ ባንኮች ያለ ሂሳብ	100.8	110.2	136.4	168.6	146.6	179.5	229.0	281.9	CASH AND BALANCE WITH DOMESTIC BANKS
በውጭ አገር ያሉ ሀብቶች	4.9	4.1	11.2	10.9	22.0	24.1	54.7	79.4	FOREIGN ASSETS
በማዕከላዊ መንግስት ላይ ያለ ገንዘብ መንግስታዊ ባልሆኑ ድርጅቶች ላይ ያለ ገንዘብ	34.0	34	34.0	34	104.6	104.6	96.6	96.6	CLAIMS ON CENTRAL GOVERNMENT GOVERNMENT
ሌሎች ሀብቶች	2309.7	2270.5	2233.7	2231.1	2142.1	3424.5	3704.4	4074.6	OTHER ASSETS
የሀብቶች ድምር	3118.5	3163.2	3244.6	3355.3	3333.2	4812.4	5032.2	5288.1	TOTAL ASSETS
ዕዳዎች									LIABILITIES
የቁጠባና የጊዜ ገደብ ተቀማጮች	678.3	684.3	742.3	743	711.7	711.2	698.6	693.8	TIME AND SAVING DEPOSITS
የካፒታል ሂሳብ	429.3	438.2	425.9	438.6	524.9	524.4	520.3	1758.4	CAPITAL ACCOUNTS
የባንኮች ብድር	844.1	846.3	827.3	815.4	861.5	939	1018.6	1297.3	CREDIT FROM BANKS
ከሌሎች ገንዘብ ድርጅቶች ብድር	-	-	-	-	-	-	-	-	CREDIT FROM OTHER FINANCIAL INSTITUTIONS
የመንግስት ብድር	13.8	13.8	13.8	13.8	0.7	1162.2	1195.2	0.7	CREDIT FROM GOVERNMENT
የውጭ አገር ብድር	247.5	246.2	253.1	253.1	254.2	284.3	284.3	284.3	FOREIGN ADVANCES AND LOANS
ሌሎች ሂሳቦች	905.6	934.4	982.4	1091.5	980.3	1191.3	1315.4	1253.8	OTHER ITEMS (NET)
የዕዳዎች ድምር	3118.6	3163.2	3244.8	3355.4	3333.3	4812.4	5032.4	5288.3	TOTAL LIABILITIES
	DEC.	JUNE	DEC.	JUNE	DEC.	JUNE	DEC.	JUNE	
	201	2002		2003		2004		2005	

ከኢትዮጵያ ብሔራዊ ባንክ የኢኮኖሚ ጥናትና የፕላን መምሪያ የተገኘ

SOURCE : NATIONAL BANK OF ETHIOPIA,
ECONOMIC RESEARCH AND PLANNING DEPARTMENT

የገንዘብ መጠንና ዝርዝር
SIZE AND COMPOSITION OF MONEY

ሠንጠረዥ ች.4 TABLE L.4

	ጠቅላላ ገንዘብ /በሚሊዮን ብር/			በጥርስነት		
	ጅምር	ጠቅላላ በሥራ ላይ ያሉ የቶችና ቅንስናሽ ገንዘቦች	የግል ተጠያቂ ተቀማጭ	የቶችና ቅንስናሽ ገንዘቦች	100/ ተቀማጭ	
ታህሳስ 22 1994	13532.0	5903.5	7628.5	43.6	56.4	2001 DECEMBER
ታህሳስ 22 1995	16437.5	7910.8	9034.9	46.7	53.3	2002 DECEMBER
ጥር 22 1995	16170.3	7331.0	8839.3	45.3	54.7	2003 JANUARY
የካቲት	16005.6	7343.4	8662.2	45.9	54.1	FEBRUARY
መጋቢት	16000.4	7439.6	8560.8	46.5	53.5	MARCH
ሚያዝያ	15740.8	7420.1	8320.7	47.1	52.9	APRIL
ግንቦት	15865.0	7452.9	8412.1	47.0	53.0	MAY
ሰኔ	16453.3	7618.5	8834.8	46.3	53.7	JUNE
ሐምሌ	16638.5	7486.6	9151.9	45.0	55.0	JULY
ነሐሴ	17102.3	7492.9	9609.4	43.8	56.2	AUGUST
መስከረም	16482.3	7352.2	9130.1	44.6	55.4	SEPTEMBER
ጥቅምት	15994.3	7261.0	8733.3	45.4	54.6	OCTOBER
ኅዳር	16372.2	7402.6	8969.6	45.2	54.8	NOVEMBER
ታህሳስ	16945.7	7910.8	9034.9	46.7	53.3	DECEMBER
ጥር 22 1996	17533.6	8230.4	9303.2	46.9	53.1	2004 JANUARY
የካቲት	17847.9	8409.8	9438.1	47.1	52.9	FEBRUARY
መጋቢት	17683.2	8438.4	9244.8	47.7	52.3	MARCH
ሚያዝያ	18061.9	8421.6	9640.3	46.6	53.4	APRIL
ግንቦት	18005.6	8540.5	9465.1	47.4	52.6	MAY
ሰኔ	19072.5	8880.4	10192.1	46.6	53.4	JUNE
ሐምሌ	16638.5	7486.6	9151.9	45.0	55.0	JULY
ነሐሴ	17102.3	7492.9	9609.4	43.8	56.2	AUGUST
መስከረም	16482.3	7352.2	9130.1	44.6	55.4	SEPTEMBER
ጥቅምት	15994.3	7261.0	8733.3	45.4	54.6	OCTOBER
ኅዳር	16372.2	7402.6	8969.6	45.2	54.8	NOVEMBER
ታህሳስ	16945.7	7910.8	9034.9	46.7	53.3	DECEMBER
ጥር 22 1997	19575.6	8374.6	11201.0	42.8	57.2	2005 JANUARY
የካቲት	18037.0	8120.7	9916.3	45.5	55.0	FEBRUARY
መጋቢት	19122.5	8541.6	10580.9	44.7	55.3	MARCH
ሚያዝያ	19545.2	9300.3	10244.9	47.6	52.4	APRIL
ግንቦት	20568.5	9416.3	11152.2	45.8	54.2	MAY
ሰኔ	21291.1	10026.0	11265.1	47.1	52.9	JUNE
	TOTAL	CIRCULATING CURRENCY	PRIVATE DEMAND DEPOSIT	CURRENCY	DEPOSIT	
	MONEY (MILLION BIRR)			PERCENT (TOTAL MONEY = 100)		

ከኢትዮጵያ ብሔራዊ ባንክ የኢኮኖሚ ጥናትና የጥላን መምሪያ የተገኘ

SOURCE : NATIONAL BANK OF ETHIOPIA,
ECONOMIC RESEARCH AND PLANNING DEPARTMENT

አንዳንድ የቁጠባና ጊዜያዊ ተቀማጭ ሂሳቦች
SELECTED DEPOSIT ITEMS

ሠንጠረዥ ች.5 TABLE L.5 በሚሊዮን ብር IN MILLION BIRR

	የቁጠባ ተቀማጭ	ጊዜያዊ ተቀማጭ /30 ቀናትና በላይ/	የመንግስት ተቀማጭ		
			ከብሔራዊ ባንክ	ከንግድ ባንክ	
ታህሳስ 22 1994	10484.7	1066.8	4070.3	1287.1	2001 DECEMBER
ታህሳስ 22 1995	11737.8	1140.7	7267.5	2044.7	2002 DECEMBER
ጥር 22 1995	11787.2	1124.3	7024.8	2147.4	2003 JANUARY
የካቲት	11901.3	1155.0	7285.9	2266.2	FEBRUARY
መጋቢት	12032.3	1128.8	7043.5	2606.0	MARCH
ሚያዝያ	12156.3	1142.9	6631.5	2729.3	APRIL
ግንቦት	12378.7	1134.3	6209.6	2638.3	MAY
ሰኔ	12502.7	1140.7	6276.8	2701.4	JUNE
ሐምሌ	12735.8	1177.8	5379.1	2532.8	JULY
ነሐሴ	12896.1	1176.9	5616.2	2502.0	AUGUST
መስከረም 1996	13034.0	1141.1	5645.7	2371.4	SEPTEMBER
ጥቅምት	13137.2	1155.7	5762.0	3017.8	OCTOBER
ኅዳር	13295.3	1196.4	6128.3	3173.1	NOVEMBER
ታህሳስ	13352.3	1224.2	6051.6	3187.9	DECEMBER
ጥር 22 1996	13412.9	1264.1	6207.4	3727.8	2004 JANUARY
የካቲት	13532.9	1276.9	5894.4	3803.4	FEBRUARY
መጋቢት	13718.3	1306.1	7100.4	4289.8	MARCH
ሚያዝያ	13974.5	1225.5	5875.4	4606.9	APRIL
ግንቦት	14189.3	1212.7	5477.0	4508.1	MAY
ሰኔ	14369.6	1220.3	5568.0	3933.3	JUNE
ሐምሌ	14726.9	1242.0	5145.4	3623.9	JULY
ነሐሴ	15054.8	1241.7	4786.2	3807.4	AUGUST
መስከረም 1997	15273.8	1254.8	4888.5	4098.7	SEPTEMBER
56868	15500.1	1267.7	4479.5	4830.1	OCTOBER
ኅዳር	15790.8	1292.7	4529.2	5082.3	NOVEMBER
ታህሳስ	15849.0	1370.2	4629.9	5079.8	DECEMBER
ጥር 22 1997	15924.2	1384.2	4984.0	5483.7	2005 JANUARY
የካቲት	16016.4	1439.8	5226.1	5877.2	FEBRUARY
መጋቢት	16252.0	1479.5	5076.7	5602.7	MARCH
ሚያዝያ	16660.0	1539.4	5012.2	5572.7	APRIL
ግንቦት	16421.2	1560.5	5523.6	5895.1	MAY
ሰኔ	17308.9	1611.8	5302.2	5124.8	JUNE
	SAVING DEPOSITS	TIME DEPOSITS 30 DAYS AND OVER	NATIONAL BANK	COMMERCIAL BANK	
			GOVERNMENT DEPOSIT WITH		

ከኢትዮጵያ ብሔራዊ ባንክ የኢኮኖሚ ጥናትና የጥላቻ መምሪያ የተገኘ
SOURCE : NATIONAL BANK OF ETHIOPIA,
ECONOMIC RESEARCH AND PLANNING DEPARTMENT

በሥራ ላይ ያሉ የወረቀትና የቅንስናሽ ገንዘቦች ዝርዝር
CIRCULATING NOTES AND COINS BY DENOMINATIONS

ሠንጠረዥ ቸ.6 TABLE L.6

በሚሊዮን ብር

IN MILLION BIRR

	1994		1995		1996		1997		
	ታህሳስ	ሰኔ	ታህሳስ	ሰኔ	ታህሳስ	ሰኔ	ታህሳስ	ሰኔ	
ሀ/ የወረቀት ገንዘቦች									A) NOTES
1 ብር	234.5	243.1	272.0	266.4	292.2	309.4	349.1	349.4	1 BIRR
5 ብር	116.9	115.0	137.2	133.2	133.4	126.9	122.2	154.0	5 BIRR
10 ብር	975.2	1092.2	1251.7	1299.7	1394.3	1562.6	1691.2	1808.0	10 BIRR
50 ብር	745.6	833.8	1036.5	1499.4	1455.9	1606.8	1598.4	1825.7	50 BIRR
100 ብር	3334.4	3658.7	3862.4	3981.0	4062.7	4902.9	5259.9	6739.2	100 BIRR
ለ/ ቅንስናሽ ገንዘቦች									B) COINS
1 ሣንቲም	0.6	0.6	0.6	0.7	0.7	0.7	0.7	0.7	1 CENT
5 ሣንቲም	20.5	20.9	21.4	22.0	22.5	22.7	23.4	24.4	5 CENTS
10 ሣንቲም	45.0	47.1	48.3	49.6	51.0	51.1	52.8	55.5	10 CENTS
25 ሣንቲም	16.5	18.4	19.6	20.8	21.1	21.1	23.3	25.5	25 CENTS
50 ሣንቲም	23.3	25.2	26.5	28.0	29.6	30.1	33.4	35.7	50 CENTS
ጠቅላላ ድምር	5512.5	6055.0	6676.2	7300.8	7463.4	8634.3	9154.4	11018.1	TOTAL NOTES AND COINS
	DEC.	JUNE	DEC.	JUNE	DEC.	JUNE	DEC.	JUNE	
	2001	2002	2002	2003	2003	2004	2004	2005	

ከኢትዮጵያ ብሔራዊ ባንክ የኢኮኖሚ ጥናትና የፕላን መምሪያ የተገኘ

SOURCE : NATIONAL BANK OF ETHIOPIA,
 ECONOMIC RESEARCH AND PLANNING DEPARTMENT

በሥራ ላይ ያለ ገንዘብ መጠን
COMPONENTS AND DETERMINANTS OF MONEY SUPPLY

ሠንጠረዥ ቸ.7

TABLE L.7

በሚሊዮን ብር

IN MILLION BIRR

	1995		1995		
	መስከረም 20	ኃምሳሪ 23	መጋቢት 23	ሰኔ 22	
በሥራ ላይ ያሉ ናቶችና ቅንሰናሽ ገንዘቦች	6358.5	5679.7	7439.6	7611.9	Notes and coins in circulation
የሩብ ዓመት ልዩነት	-133.3	-678.8	947.8	172.3	Quarterly change
ተጠያቂ ተቀማጭ	9384.9	9035.1	8878.0	9214.3	Demand deposit
የሩብ ዓመት ልዩነት	400.3	-349.8	-106.6	336.3	Quarterly change
የገንዘብ መጠን	15743.4	14714.8	16317.6	16826.2	Money supply
የሩብ ዓመት የተጣራ ልዩነት	267	-1028.6	841.2	508.6	Net Quarterly change
<u>ልዩነት በዝርዝር</u>					<u>COMPOSITION OF CHANGE</u>
<u>የማዕከላዊ መንግስት ያልሆነ</u>					<u>NON-CENTRAL GOVERNMENT</u>
የክሬዲት ዕድገት	-525.1	403.5	179.2	-31.2	Increase in Credit
ሲቀንስ ባስቸኳይ ተቀማጭ ገንዘብ ጭማሪ	469.7	269.3	282.6	482.2	Less increase in non Sight Deposit
<u>የማዕከላዊ መንግስት</u>					<u>CENTRAL GOVERNMENT</u>
የክሬዲት ዕድገት	415.4	-1369.5	133.1	2065.7	Increase in Credit
ሲቀንስ ተቀማጭ ገንዘብ ጭማሪ	1210.9	1353.3	282.6	48.2	Less increase in Deposit
የአገር ውስጥ ክሬዲት	27419.1	26453.0	26765.3	28799.8	Domestic Credit
መጠባበቂያዎች	8785.1	10364.5	10660.4	10963.1	External Reserves
ሌሎች	8051.8	9513.7	8264.1	9293.4	Other items
በገንዘብ መጠን የሩብ ዓመት የተጣራ ልዩነት	267	-1028.6	841.2	508.6	Net Quarterly change
	30 SEP.	30 DEC.	31 MARCH	30 JUNE	
	2002		2003		

ከኢትዮጵያ ብሔራዊ ባንክ በተገኘው መረጃ መሠረት

* BASED ON DATA OBTAINED FROM
 NATIONAL BANK OF ETHIOPIA

በሥራ ላይ ያለ ገንዘብ መጠን
COMPONENTS AND DETERMINANTS OF MONEY SUPPLY

ሠንጠረዥ ቸ.7 /የቀጠለ/

TABLE L.7 (CONT'D)

በሚሊዮን ብር

IN MILLION BIRR

	1996		1996		
	መስከረም 20	ኃህሣም 23	መጋቢት 23	ሰኔ 22	
	በሥራ ላይ ያሉ ናቶችና ቅንሰናሽ ገንዘቦች	7352.2	6867.7	7408.0	
የሩብ ዓመት ልዩነት	-259.7	-484.5	534.2	435.4	Quarterly change
ተጠያቂ ተቀማጭ	9484.8	9352.6	9244.8	10192.1	Demand deposit
የሩብ ዓመት ልዩነት	270.5	-132.2	210	947.3	Quarterly change
የገንዘብ መጠን	16837.0	16220.3	16653.3	18036	Money supply
የሩብ ዓመት የተጣራ ልዩነት	10.8	-616.7	744.1	1382.7	Net Quarterly change
<u>ልዩነት በዝርዝር</u>					<u>COMPOSITION OF CHANGE</u>
<u>የማዕከላዊ መንግስት ያልሆነ</u>					<u>NON-CENTRAL GOVERNMENT</u>
የክሬዲት ዕድገት	-1160.5	1081.5	1111.2	-662.3	Increase in Credit
ሲቀንስ ባስቸኳይ ተቀማጭ ገንዘብ ጭማሪ	531.8	401.4	447.8	565.6	Less increase in non Sight Deposit
<u>የማዕከላዊ መንግስት</u>					<u>CENTRAL GOVERNMENT</u>
የክሬዲት ዕድገት	108.3	79.9	581.6	1461.3	Increase in Credit
ሲቀንስ ተቀማጭ ገንዘብ ጭማሪ	27747.6	401.4	2150.6	-188.9	Less increase in Deposit
የአገር ውስጥ ክሬዲት	11470.2	28909.1	28451.3	31138.8	Domestic Credit
መጠባበቂያዎች	8205.6	12656.8	13882.3	12997.8	External Reserves
ሌሎች	8051.8	10769	10656	10510.7	Other items
በገንዘብ መጠን የሩብ ዓመት የተጣራ ልዩነት	10.8	-616.7	744.1	1382.7	Net Quarterly change
	30 SEP.	30 DEC.	31 MARCH	30 JUNE	
	2003		2004		

ከኢትዮጵያ ብሔራዊ ባንክ በተገኘው መረጃ መሠረት

* BASED ON DATA OBTAINED FROM NATIONAL BANK OF ETHIOPIA

በሥራ ላይ ያለ ገንዘብ መጠን
COMPONENTS AND DETERMINANTS OF MONEY SUPPLY

TABLE L.7 (CONT'D)

በሚሊዮን ብር

IN MILLION BIRR

	1997		1997		
	መስከረም 20	ታህሣሥ 23	መጋቢት 23	ሰኔ 22	
በሥራ ላይ ያሉ የቶችና ቅንሾች ገንዘቦች	7314.3	8274.5	8541.6	10026.0	Notes and coins in circulation
የሩብ ዓመት ልዩነት	-529.6	960.2	267	1484.4	Quarterly change
ተጠያቂ ተቀማጭ	10792.8	10388.4	10580.9	11265.1	Demand deposit
የሩብ ዓመት ልዩነት	600.7	-404	192.6	684.2	Quarterly change
የገንዘብ መጠን	18107.1	18662.9	19122.5	21291.1	Money supply
የሩብ ዓመት የተጣራ ልዩነት	71.1	555.8	459.6	2168.6	Net Quarterly change
<u>ልዩነት በዝርዝር</u>					<u>COMPOSITION OF CHANGE</u>
<u>የማዕከላዊ መንግስት ያልሆነ</u>					<u>NON-CENTRAL GOVERNMENT</u>
የክራዲት ዕድገት	873.7	2721.6	3096.6	275.6	Increase in Credit
ሲቀንስ ባስቸኳይ ተቀማጭ ገንዘብ ጭማሪ	844.1	690.6	512.4	1189.2	Less increase in non Sight Deposit
<u>የማዕከላዊ መንግስት</u>					<u>CENTRAL GOVERNMENT</u>
የክራዲት ዕድገት	1139.2	-1053.5	723.6	2591.1	Increase in Credit
ሲቀንስ ተቀማጭ ገንዘብ ጭማሪ	-514.1	722.4	969.8	-252.4	Less increase in Deposit
የአገር ውስጥ ክሬዲት	33397.7	34343.4	37193.8	40312.9	Domestic Credit
መጠባበቂያዎች	13082.3	13590.5	14108.4	13868	External Reserves
ሌሎች	11844.3	12051.9	14448.2	13969.1	Other items
በገንዘብ መጠን የሩብ ዓመት የተጣራ ልዩነት	71.1	555.8	459.6	2168.6	Net Quarterly change
	30 SEP.	30 DEC.	31 MARCH	30 JUNE	
	2004		2005		

ከኢትዮጵያ ብሔራዊ ባንክ በተገኘው መረጃ መሠረት

* BASED ON DATA OBTAINED FROM NATIONAL BANK OF ETHIOPIA

በብሔራዊ ባንክና በንግድ ባንኮች የተደረገ የአገር ውስጥ ክሬዲት
DOMESTIC CREDIT BY THE NATIONAL BANK AND COMMERCIAL BANK

ሠንጠረዥ ቸ.8 TABLE L.8 በሚሊዮን ብር IN MILLION BIRR

	ደምር	የመንግስት ግዳጅ		የመንግስት ያልሆኑ ግዳጅ			2001 DECEMBER 2002 December 2003 JANUARY FEBRUARY MARCH APRIL MAY JUNE JULY AUGUST SEPTEMBER OCTOBER NOVEMBER DECEMBER 2004 JANUARY FEBRUARY MARCH APRIL MAY JUNE 2005 JANUARY FEBRUARY MARCH APRIL MAY JUNE
		ለብሔራዊ ባንክ	ለንግድ ባንክ	ብድሮችና በቅድሚያ የተከፈሉ ሂሳቦች	ቅናሽ የተደረገባቸው ሰነዶች	ኢንቨስትመንት	
ታህሳስ 22 1994	33615.5	12524.9	7499.5	13581.8	-	9.3	
ታህሳስ 22 1995	37554.1	15100.4	9242.8	13173.1	-	37.8	
ጥር 22 1995	37817.0	15447.4	9016.1	13315.7	-	37.8	
የካቲት	38013.4	15599.4	8951.7	13424.5	-	37.8	
መጋቢት	38179.1	15850.4	8963.2	13327.7	-	37.8	
ሚያዝያ	38178.2	15568.4	9287.7	13283.9	-	38.2	
ግንቦት	38325.1	15319.4	9458.2	13509.2	-	38.3	
ሰኔ	39582.5	15664.4	10543.6	13334.3	-	40.2	
ሐምሌ	38397.7	15232.4	10109.5	13015.6	-	40.2	
ነሐሴ	38915.5	15747.4	10223.1	12889.8	-	55.2	
መስከረም 1996	38472.4	14581.3	10773.7	13062.2	-	55.2	
ጥቅምት	39264.4	12392.4	13573.6	13245.1	-	53.3	
ኅዳር	40102.8	15300.4	11105.4	13592.3	-	104.7	
ታህሳስ	40872.2	15665.4	10992.2	14108.5	-	106.1	
ጥር 22 1996	42397.5	16678.4	11007.8	14555.2	-	156.1	
የካቲት	42988.5	16299.4	11612.9	14920.1	-	156.1	
መጋቢት	42600.4	14970.4	12268.8	15205.1	-	156.1	
ሚያዝያ	43713.2	15842.4	12569.7	15145.0	-	156.1	
ግንቦት	43275.1	14898.4	13135.4	15035.2	-	206.1	
ሰኔ	43056.8	14957.3	13743.2	14150.3	-	206.0	
ሐምሌ	42439.8	14523.3	13967.0	13741.6	-	207.9	
ነሐሴ	43648.9	15668.2	13370.1	14351.9	-	258.7	
መስከረም 1997	44786.9	15353.2	14486.5	14687.8	-	259.4	
ጥቅምት	44938.9	17850.2	11457.8	15370.8	-	260.1	
ኅዳር	45623.4	20882.2	8332.6	16148.5	-	260.1	
ታህሳስ	46460.4	22726.2	6060.0	16762.5	-	911.7	
ጥር 22 1997	49122.4	24038.2	5694.8	16979.3	-	2410.1	
የካቲት	49875.5	24899.2	4915.3	17550.9	-	2510.1	
መጋቢት	50282.5	21831.2	7678.6	17809.9	-	2962.8	
ሚያዝያ	51661.2	22007.2	8758.7	17928.5	-	2966.8	
ግንቦት	52654.9	21741.2	9571.4	18125.5	-	3216.8	
ሰኔ	53227.5	24842.2	7258.7	17856.5	-	3270.1	
	TOTAL	NATIONAL BANK	COMMERCIAL BANK	LOANS AND ADVANCES	BILLS DISCOUNTED	INVESTMENT	
		CLAIMS ON CENTRAL GOVERNMENT		CLAIMS ON OTHER THAN CENTRAL GOVERNMENT			

ከኢትዮጵያ ብሔራዊ ባንክ የኢኮኖሚ ጥናትና የጥገና መምሪያ የተገኘ

SOURCE:- NATIONAL BANK OF ETHIOPIA,
ECONOMIC RESEARCH AND PLANNING DEPARTMENT

የተጣራ የወርቅና የውጭ አገር ምንዛሪ ተቀማጭ
NET GOLD AND FOREIGN EXCHANGE HOLDINGS

ሠንጠረዥ ቸ.9 TABLE L.9 በሚሊዮን ብር IN MILLION BIRR

	የተጣራ የውጭ አገር ምንዛሪ ተቀማጭ			
	ድምር	ብሔራዊ ባንክ	ንግድ ባንክ	
ታህሳስ 22 1994	5994.2	2242.9	3751.3	2001 DECEMBER
ታህሳስ 22 1995	10447.2	6104.2	4343.0	2002 December
ጥር 22 1995	10202.7	6207.9	3994.8	2003 JANUARY
የካቲት	10583.0	6234.4	4348.6	FEBRUARY
መጋቢት	10743.5	6268.7	4474.8	MARCH
ሚያዝያ	11147.3	6636.1	4511.2	APRIL
ግንቦት	11495.0	6854.2	4640.8	MAY
ሰኔ	11049.1	6284.8	4764.3	JUNE
ሐምሌ	11304.2	6242.9	5061.3	JULY
ከሐሴ	11271.2	6150.1	5121.1	AUGUST
መስከረም 1996	11557.2	6545.8	5011.4	SEPTEMBER
ጥቅምት	11668.7	6574.7	5094.0	OCTOBER
ኅዳር	12254.5	7012.7	5241.8	NOVEMBER
ታህሳስ	12747.1	7164.1	5583.0	DECEMBER
ጥር 22 1996	12711.2	7149.7	5561.5	2004 JANUARY
የካቲት	12652.2	7217.6	5434.6	FEBRUARY
መጋቢት	13882.3	8541.3	5341.0	MARCH
ሚያዝያ	14338.0	8679.7	5658.3	APRIL
ግንቦት	14210.6	8844.0	5366.6	MAY
ሰኔ	12997.9	8744.9	4253.0	JUNE
ሐምሌ	13700.3	9085.4	4614.9	JULY
ከሐሴ	13163.6	8848.6	4315.0	AUGUST
መስከረም 1997	13082.3	8880.0	4202.3	SEPTEMBER
ጥቅምት	13400.8	9077.5	4323.3	OCTOBER
ኅዳር	12957.3	8876.9	4080.4	NOVEMBER
ታህሳስ	13590.6	10009.3	3581.3	DECEMBER
ጥር 22 1997	12985.2	9281.7	3703.5	2005 JANUARY
የካቲት	13555.2	8434.3	5120.9	FEBRUARY
መጋቢት	14108.4	9215.1	4893.3	MARCH
ሚያዝያ	14263.1	9253.7	5009.4	APRIL
ግንቦት	14263.2	9458.0	4805.2	MAY
ሰኔ	13868.0	9589.2	4278.8	JUNE
	TOTAL	NATIONAL BANK	BANK	
	NET FOREIGN EXCHANGE HOLDING			

ከኢትዮጵያ ብሔራዊ ባንክ የኢኮኖሚ ጥናትና የፕላን መምሪያ የተገኘ

SOURCE : NATIONAL BANK OF ETHIOPIA,
 ECONOMIC RESEARCH AND PLANNING DEPARTMENT

የኢትዮጵያ ንግድ ባንክ ያልተመለሰ የብድር መጠን በኢኮኖሚ ዘርፍ

COMMERCIAL BANK OF ETHIOPIA
OUTSTANDING BALANCES OF LOANS AND ADVANCES

ሠንጠረዥ ቸ.10 TABLE L.10

IN '000 Birr

የኢኮኖሚ ዘርፍ	1994+	1995+	1996+	1997*	ECONOMIC SECTOR
	ሰኔ 23	ሰኔ 23	ሰኔ 23	ሰኔ 23	
ከእርሻ	549,167	482,931	481,692	1,023,242	AGRICULTURE
ሰብል	314,023	284,772	295,319	588,317	CROPS
ተክል	194,702	165,150	159,464	153,664	PLANTATION
አትክልትና ፍራፍሬ	4,517	4,146	3,998	4,039	HORTICULTURE
ከብት እርባታ	18,336	16,723	10,679	9,519	LIVESTOCK
ሌሎች	17,589	12,140	12,232	267,703	OTHERS
ከኢንዱስትሪ	1,074,858	1,092,720	1,103,793	1,233,263	MANUFACTURING
ከትላልልቅ ኢንዱስትሪ	950,033	992,260	1,001,421	1,142,578	LARGE SCALE INDUSTRIES
ምግብና መጠጥ	239,224	224,404	181,976	282,253	FOOD & BEVERAGE
ጨርቃ ጨርቅ	55,137	47,384	50,433	50,552	TEXTILE & CLOSING
ቆዳና ጫማ	24,678	27,095	26,334	27,724	LEATHER & SHOE
ወረቀትና እትመት	41,973	36,843	44,092	78,560	PAPER & PRINTING
ኬሚካል	19,844	41,473	44,419	36,938	CHEMICALS
ህንፃ መሣሪያዎች	133,506	260,251	310,035	326,662	BUILDING MATERIALS
ሌሎች	435,671	354,810	344,132	339,888	OTHERS
ከአነስተኛ ኢንዱስትሪ	124,825	100,460	102,372	90,685	SMALL SCALE INDUSTRIES
ሸክላ ስራ	5,903	6,136	4,404	4,404	POTTERY
ቆዳ ስራ	38,041	27,601	24,279	1,331	TANNERY
ሸመና	53	31	14	17,118	WEAVING
ልብስ ስፈት	9,910	7,052	21,296	-	TAILORING
የአናሚ ሥራ	6,923	3,160	6,895	20,370	CARPENTRY
ሌሎች	63,995	56,480	45,484	6,942	OTHERS
ከአገር ውስጥ ንግድና አገልግሎት	2,768,248	3,940,164	3,251,150	3,496,567	DOMESTIC TRADE & SERVICES
አገር ውስጥ ንግድ	1,362,247	2,812,075	1,679,230	1,506,829	DOMESTIC TRADE
ሰብል	273,979	268,800	240,846	287,040	CROPS
ቆዳና ሌጦ	9,585	7,978	8,794	8,433	HIDE & SKIN
ቡና	271,637	242,554	232,693	220,282	COFFEE
ኢንዱስትሪ ውጤቶች	950,351	786,566	801,745	775,842	INDUSTRIAL PRODUCTS
ሌሎች	(143,305)	361,451	395,151	215,231	OTHERS
ትራንስፖርት	670,510	508,336	565,170	583,035	TRANSPORT
ሆቴሎችና ቱሪዝም	239,359	158,648	136,016	125,190	HOTEL & TOURISM
ሌሎች አገልግሎቶች	496,132	461,105	870,734	1,281,513	OTHER SERVICES
ከአለም አቀፍ ንግድ	2,953,857	1,923,522	2,342,376	2,871,769	INTERNATIONAL TRADE
ወደ ውጭ አገር ከተሸጡ ዕቃዎች	1,071,278	764,203	871,384	870,078	EXPORT
ቡና	814,752	584,809	713,851	746,756	COFFEE
ቆዳና ሌጦ	60,135	54,207	32,515	40,260	HIDE & SKIN
ሌሎች	196,391	125,187	125,018	83,062	OTHERS
ከውጭ ለተገዙ ዕቃዎች	1,882,579	1,159,319	1,470,992	2,001,691	IMPORT
ምግብ መጠጥና ትምህርት	54,403	36,706	26,760	23,253	FOOD, BEVERAGE & TOBACCO
ጨርቃ ጨርቅ	101,913	73,451	54,689	23,173	TEXTILE
መሳሪያዎችና መሣሪያዎች	388,771	296,692	412,626	448,301	MACHINERY & EQUIPMENT
ነዳጅ	706	94,442	29,571	9,216	PETROLEUM
ማዳበሪያ	496,466	181,557	550,604	1,068,521	FERTILIZERS
ተባይማጥፊያ	12,958	210	233	212	INSECTICIDES
የፋርማሲ ቁሳቁስ	47,975	7,578	15,913	5,901	PHARMACEUTICALS
ሌሎች	779,387	468,683	380,596	423,114	OTHERS
ህንፃና ከንቅት-ክሸንጎ	729,119	733,830	688,489	547,262	BUILDING & CONSTRUCTION
የግል ብድር	24,316	31,100	43,379	44,130	PERSONAL LOAN
የገንዘብ ድርጅቶች	569,336	467,738	425,052	340,188	FINANCIAL INSTITUTION
የፕሮጀክቶች ከፋይናንስ ንግድ	1,073,997	1,031,314	453	-	COFINANCING OF PROJECTS
አይ ኤፍ ኤ ዲ ብድር	8,213	6,677	-	-	IFAD LOAN
ጉዳያቸው በሕግ የተያዙ					LOANS IN LEGAL (ALD)**
ለካሳ ክፍያ የተዘጋጁ					LOANS IN REALIZATION (LIR)**
ጠቅላላ ድምር	9,751,111	9,709,996	8,336,384	9,556,421	GRAND TOTAL
	30 June	30 June	30 June	30 June	
	2002+	2003+	2004+	2005*	

ከኢትዮጵያ ንግድ ባንክ የተገኘ

+ የተመረመረና የታረመ

* ያልተመረመረ

SOURCE : COMMERCIAL BANK OF ETHIOPIA

+ Audited & Revised

* Unaudited

** The balance of ALD for the three consecutive years and that of LIR for 2002 are included in their respective Economic Sectors, Audited Report of the year.

የመንግስት የአገር ውስጥ ስጋ በአባዳሪዎች
INTERNAL DEBT OF GOVERNMENT BY HOLDERS

አባዳሪዎች	1994		1995		1996		1997		በሚሊዮን ብር IN MILLION BIRR
	ታህሣሥ	ሰኔ	ታህሣሥ	ሰኔ	ታህሣሥ	ሰኔ	ታህሣሥ	ሰኔ	
<u>ከኢትዮጵያ ብሔራዊ ባንክ</u>	12524.9	14219.9	15100.4	15664.4	15665.4	14957.3	22726.2	24842.2	<u>NATIONAL BANK OF ETHIOPIA</u>
በቀጥታ በቅድሚያ የተከፈለ	2210.0	3905.0	4916.0	5480.0	5481.0	4821.0	12638.0	14754.0	DIRECT ADVANCES
በቃል ኪዳን ሰነድ	-	-	-	-	-	-	-	-	PROMISARY NOTES
የመንግስት ቦንዶች									SECURITIES (BONDS)
ወለድ ያለው	998.9	998.9	998.9	998.9	998.9	902.7	902.7	902.7	NONINTEREST BEARING(1)
ወለድ የሌለው	9316.0	9316.0	9185.5	9185.5	9185.5	9185.5	9185.5	9185.5	INTERESET BEARING(1)
<u>ከንግድ ባንክ</u>	7499.5	8513.3	8963.1	10543.6	10992.2	13743.2	6060	7258.7	<u>COMMERCIAL BANKS</u>
የመንግስት ቦንዶች	5107.8	5107.8	2215.6	2480.7	2480.7	2665.2	2549.7	2264.1	GOV'T BONDS
በግምጃ ቤት ሰነድ	2391.7	3405.5	6747.5	8062.9	8511.5	11078.0	3510.3	4994.7	TREASURY BILLS(2)
<u>ከመንግሥታዊ ድርጅቶች</u>									<u>INTER GOVERNMENT DEPARTMENT</u>
/ ቦንዶች / ሌሎች	1789.9	1471.3	1459.3	1367.2	1660.8	1448.2	1312.3	1748.6	<u>DEBT (BONDS) OTHERS</u>
በግምጃ ቤት ሰነድ	1403.1	1107.7	1097.8	1005.7	1307.7	1066.5	938.5	1400.0	TREASURY BILLS
የመንግስት ግዴታ	352.8	328.6	327.5	327.5	-	-	-	-	GOV'T DEBT BONDS
የመንግስት ቦንዶች	34.0	35.0	34	34	353.1	381.7	373.8	348.6	GOV'T BONDS
ድምር	21814.3	24204.5	25522.8	27575.2	28318.4	30148.7	30098.5	33849.5	TOTAL GOV'T INDEBTEDNESS
	DEC.	JUNE	DEC.	JUNE	DEC.	JUNE	DEC.	JUNE	HOLDERS
	2001	2002		2003		2004		2005	

(1) በብሔራዊ ባንክ ያሉ የመንግስት ቦንዶች በባንኩ ሠራተኞች የጡረታ ፈንድ የተገዙትን አይጨምርም
NOTE:-(1) GOVERNMENT BONDS HELD BY THE NATIONAL BANK OF ETHIOPIA
DO NOT INCLUDE THE AMOUNT BOUGHT WITH THE BANK'S STAFF PENSION FUND

(2) በኢትዮጵያ ንግድ ባንክ የሠራተኞች የጡረታ ፈንድ የተገዙትን ሰነዶች አይጨምርም
(2) EXCLUDES DISCOUNTS AND BILLS PURCHASED WITH THE STAFF PENSION FUND OF C.B.E.

ከኢትዮጵያ ብሔራዊ ባንክ የኢኮኖሚ ጥናትና ፕላን መምሪያ የተገኘ
SOURCE : NATIONAL BANK OF ETHIOPIA,
ECONOMIC RESEARCH AND PLANNING DEPARTMENT

ከልማት ባንክ የተፈቀዱና የተሰጡ ብድሮች ብዛትና መጠን
NUMBER AND AMOUNT OF LOANS APPROVED AND DISBURSED BY
THE DEVELOPMENT BANK

ሠንጠረዥ ቸ.12 TABLE L.12

የሥራው ክፍል	1994						1995						1996*						1997						SECTOR
	የተፈቀደ ብድር			የተሰጠ ብድር	የተፈቀደ ብድር			የተሰጠ ብድር	የተፈቀደ ብድር			የተሰጠ ብድር	የተፈቀደ ብድር			የተሰጠ ብድር									
	ብዛት	የገንዘብ ልክ	ብዛት		የገንዘብ ልክ	ብዛት	የገንዘብ ልክ		ብዛት	የገንዘብ ልክ	ብዛት		የገንዘብ ልክ	ብዛት	የገንዘብ ልክ										
	በቁጥር	በብር	በብር	በቁጥር	በብር	በብር	በቁጥር	በብር	በብር	በቁጥር	በብር	በብር	በቁጥር	በብር	በብር										
ለእርሻ	246	73.9	58.9	140	61.2	40.4	191	189.5	110.9	181	335.8	301.9	AGRICULTURAL												
ለኢንዱስትሪ	259	32.3	37.5	103	53.1	18.7	141	150.9	110.7	132	347.2	208.5	INDUSTRIAL												
ለአገልግሎቶችና ለሌሎች ሥራዎች ድምር	186	21.1	14.9	173	6.6	9.9	266	93.9	73.4	359	94.5	65.2	SERVICES												
	691	127.3	111.3	416	120.9	69	598	434.3	295	672	777.5	575.6	TOTAL												
	NUMBER	AMOUNT	DISBURSED	NUMBER	AMOUNT	DISBURSED	NUMBER	AMOUNT	DISBURSED	NUMBER	AMOUNT	DISBURSED													
	LOANS APPROVED			LOANS APPROVED			LOANS APPROVED			LOANS APPROVED															
	2001/02			2002/03			2003/04*			2004/05															

የተፈቀዱ ብድሮች በሥራ ዓይነታቸው
LOANS APPROVED BY ACTIVITIES

ሠንጠረዥ ቸ.13 TABLE L.13

የሥራው ዓይነቶች	1994	1995	1996*	1997	IN MILLION BIRR
ሀ. ለእርሻና ለከብት					A. AGRICULTURE AND LIVESTOCK
እርባታ	73.9	61.2	189.5	335.9	
ለ. ለፍብረት ኢንዱስትሪዎች	32.3	53.1	150.9	347.2	B. MANUFACTURING INDUSTRIES
1. ለምግብ ሥራ	1. FOOD STUFFS
2. ለመጠጦች ሥራ	2. BEVERAGES
3. ለጨርቃ ጨርቅና ለመሳሰሉት ሥራዎች	3. TEXTILES AND ALLIED INDUSTRIES
4. ለእንጨት ሥራ	4. WOOD
5. ለወረቀትና ለማተሚያ ሥራዎች	5. PAPER AND PRINTING
6. ለቅመማ /ኬሚካል/ ሥራ	6. CHEMICALS
7. ለብርድቆ ለሽክላና ለድንጋይ ሥራ	7. GLASS, CLAY AND STONE
8. ለብረታ ብረት ሥራ	8. METAL WORKING
9. ለቆዳና ለቆዳ ማልፋት ሥራ	9. LEATHER AND TANNING
10. ሌሎች	10. OTHERS
ሐ. ለከንቋዎች ሥራ	C. CONSTRUCTION
መ. ለመጓጓዣ /ለትራንስፖርት/	D. TRANSPORTATION
ሠ. ለህዝብ አገልግሎት ለሚሰጡ ድርጅቶች	E. SERVICES
ረ. ለሌሎች ልዩ ልዩ ሥራዎች ድምር	21.1	6.6	93.9	94.5	F. MISCELLANEOUS
	127.3	120.9	434.3	777.6	TOTAL
	2001/02	2002/03	2003/04*	2004/05	ACTIVITIES

የዓመቱ መጨረሻ ሰኔ 30 ነው

YEAR ENDING JULY 7

ከልማት ባንክ የተገኘ

SOURCE: DEVELOPMENT BANK

**ከ ፣ መ ፣ ሠ እና ረ ን ያጠቃልላል

** INCLUDES "C", "D", "E AND "F"

... ዝርዝር መረጃ አልተገኘም

...DETAIL DATA NOT AVAILABLE

* የታረመ

* REVISED

በተበዳሪዎች ላይ ያሉ ብድሮች በየሥራ ዓይነታቸው
OUTSTANDING LOANS DISTRIBUTED BY ACTIVITIES

ወንጠረዥ ቸ. 14 TABLE L.14 በሚሊዮን ብር IN MILLION BIRR

የሥራው ዓይነቶች	1994	1995	1996	1997	
<u>ሀ. ለእርሻና ለከብት</u>					<u>A. AGRICULTURE AND LIVESTOCK</u>
እርሻ	1052.5	1046.2	895.1	1169.9	
<u>ለ. ለፋብሪካ እንዳስትረዎች **</u>	1358.9	1381.0	2788.7	3016.5	<u>B. MANUFACTURING INDUSTRIES**</u>
1. ለምግብ ሥራ	1. FOOD STUFFS
2. ለመጠጦች ሥራ	2. BEVERAGES
3. ለጨርቃ ጨርቅና ለመሳሉት ሥራዎች	3. TEXTILES AND ALLIED INDUSTRIES
4. ለእንጨት ሥራ	4. WOOD
5. ለወረቀትና ለማተሚያ ሥራዎች	5. PAPER AND PRINTING
6. ለቅመማ / ለኬሚካል /	6. CHEMICALS
7. ለብርጭቆ ለሸክላና ለድንጋይ ሥራ	7. GLASS, CLAY AND STONE
8. ለብረታ ብረት ሥራ	8. METAL WORKING
9. ለቆዳና ለቆዳ ማልፋት ሥራ	9. LEATHER AND TANNING
10. ሌሎች	10. OTHERS
ሐ. ለስንጸዎች ሥራ	221.8	230.5	242.3	...	<u>C. CONSTRUCTION</u>
መ. ለመጓጓዣ / ለትራንስፖርት /	18.6	19.9	20.9	...	<u>D. TRANSPORTATION</u>
ሠ. ለሕዝብ አገልግሎት ለሚሰጡ ድርጅቶች	259.8	259.9	268.7	...	<u>E. SERVICES</u>
ረ. ለሌሎች ልዩ ልዩ ሥራዎች	38.6	31.1	86.4	725.4	<u>F. MISCELLANEOUS</u>
ሰ. ለቋሚ ንብረት	-	-	-	-	<u>G. REAL ESTATE</u>
ሸ. ማዕድንና የሀይል ምንጮች	26.7	27.8	28.9		<u>H. MINES AND ENERGY RESOURCES</u>
ድምር	2976.9	2996.4	4331.0	4911.8	TOTAL
	2001/02	2002/03	2003/04	2004/05	ACTIVITIES

የዓመቱ መጨረሻ ሰኔ 30 ነው።

YEAR ENDING JULY 7

...መረጃ አልተገኘም

... DATA NOT AVAILABLE

** ከ1-10 ላሉት የሥራ አይነቶች የተሰጠ ጠቅላላ ብድር ነው።

**REPRESENT TOTAL OUTSTANDING FOR MANUFACTURING INDUSTRIES LISTED FROM 1-10

ከልማት ባንክ የተገኘ

SOURCE: DEVELOPMENT BANK

በተበዳሪዎች ላይ ያሉ ብድሮች በየሥራ ክፍላቸው
OUTSTANDING LOANS DISTRIBUTED BY SECTORS

ወንጠረዥ ቸ. 15 TABLE L.15 በሚሊዮን ብር IN MILLION BIRR

የሥራ ክፍሎች	1994	1995	1996	1997	
ሀ. ለእርሻ	1052.5	1046.2	895.0	1170.0	A. AGRICULTURE
1. ለመንግሥት	-	-	-	-	1. STATE
2. ለማህበራት	384.5	395.3	199.0	210.4	2. COOPERATIVES
3. ለግል	668.0	650.9	696.0	959.6	3. PRIVATE
ለ. ለኢንዱስትሪዎች	1358.9	1381.0	2788.7	3017.0	B. INDUSTRIES
1. ለመንግሥት	264.6	273.9	254.6	268.2	1. STATE
2. ለማህበራት	11.4	8.5	9.1	8.8	2. COOPERATIVES
3. ለግል	1082.9	1098.6	2525.0	2740.0	3. PRIVATE
ሐ. ለስንጻዎች	221.8	230.4	242.3		C. CONSTRUCTION
1. ለመንግሥት	17.6	17.8	18.1		1. STATE
2. ለማህበራት	-	-	-	-	2. COOPERATIVES
3. ለግል	204.2	212.6	224.2		3. PRIVATE
መ. ለመጓጓዣ	18.6	19.9	20.9		D. TRANSPORT
1. ለመንግሥት	13.2	14.4	15.7		1. STATE
2. ለማህበራት	-	-	-	-	2. COOPERATIVES
3. ለግል	5.4	5.5	5.2		3. PRIVATE
ሠ. ለአገልግሎቶች	298.4	291.1	355.2	725.4	E. SERVICES
1. ለመንግሥት	0.6	0.7	0.7	65.8	1. STATE
2. ለማህበራት	-	-	-	114.3	2. COOPERATIVES
3. ለግል	259.2	259.3	268.0	545.3	3. PRIVATE
4. ሌሎች	38.6	31.1	86.5	0.0	4. OTHERS*
ረ. ለማዕድንና ሃይል ማመንጫ	26.7	27.8	28.9		F. MINES AND ENERGY RESOURCES
1. ለመንግሥት	26.7	27.8	28.9		1. STATE
2. ለማህበራት	-	-	-	-	2. COOPERATIVES
3. ለግል	-	-	-	-	3. PRIVATE
ድምር	2976.9	2996.4	4331.0	4912.4	TOTAL
	2001/02	2002/03	2003/04	2004/05	SECTOR

የዓመቱ መጨረሻ ሰኔ 30 ነው

* YEAR ENDING JULY 7

ከልማት ባንክ የተገኘ

SOURCE: DEVELOPMENT BANK

Outstanding loan position is the aggregate of principal and interest amounts as at June 30 of the respective years. Besides it includes the arrears balance as well.

* Others include Microfinance

ኢትዮጵያ ከሌሎች አገሮች ጋር ያላት የገንዘብ ክፍያ ሚዛን ማጠቃለያ
SUMMARY OF THE BALANCE OF PAYMENT OF ETHIOPIA

ሠንጠረዥ ቸ.16

TABLE L.16

የተጣራ ልዩነት በሚሊዮን ብር

NET TRANSACTIONS IN MILLION BIRR

ዓመተ ምዕራት	ጊዜያዊ ሂሳብ				የካፒታል ሂሳብ			በገንዘብ ነክ ድርጅቶች ተቀማጭ ሂሳብና ል			የተጣራ ግድፈትና ስህተት	ዓመት
	የዕቃዎች ንግድ	ግልጋሎቶች	የተዛወሩ ክፍያዎች	የተጣራ ብልጫ/ጌድለት	ጠቅላላ	የግል	የመንግሥት	ጠቅላላ	በዋና ዋናዎች	በሌሎች		
1983	-1558.2	-62.0	-	-1620.2	330.2	140.6	1990/91
1984	-1491.7	27.4	-	-1464.3	-238.1	-270.6	1991/92
1987	-3814.7	406.3	9.4	-3399.0	186.6	-83.1	1994/95
1988	-4621.2	832.5	4448.7	660.0	280.6	-451.9	732.5	-189.0	-1873.9	1684.9	-928.4	1995/96
1989	-3886.4	825.7	3126.5	65.8	23.5	-61.8	85.2	1777.8	2274.4	-496.6	-1703.0	1996/97
1990	-5196.4	715.7	3974.9	-505.8	633.2	380.6	252.6	87.4	1006.1	-918.7	-827.2	1997/98
1991	-8065.7	462.7	3771.3	-3831.7	-1084.8	883.1	-1967.9	-256.9	-356.3	99.4	1363.6	1998/99
1992	-9157.6	722.5	510.4	-7924.7	1235.6	1315.6	-80.0	1281.3	554.5	726.8	-1490.8	1999/00
1993	-9101.1	647.5	6447.5	-2006.1	2153.4	537.3	1616.1	-29.5	273.7	-303.2	-1035.4	2000/01
1994	-10621.0	867.9	6690.4	-3062.7	4349.2	228.7	4120.5	-3022.5	-2105.1	-917.4	2264.6	2001/02
1995	-11787.2	1021.0	9394.4	-1371.8	2629.0	-454.0	3083.0	-3226.3	-2485.8	-740.5	2416.4	2002/03
1996	-17097.7	2121.9	10669.9	-4305.9	3273.3	1297.8	1975.5	-1934.0	-2449.9	515.9	2264.3	2003/04
1997	-24356.7	2089.5	11277.6	-10989.6	6339.8	2814.8	3525.0	631.0	656.6	-25.6	3294.1	2004/05
	TRADE BALANCE F.O.B.	SERVICES	TRANSFER PAYMENTS	NET SURPLUS /DEFICIT/	TOTAL	PRIVATE	CENTRAL GOVERNMENT	TOTAL	CENTRAL MONETARY	OTHER INSTITUTIONS	NET ERRORS AND OMISSION	YEAR
	CURRENT ACCOUNT				CAPITAL ACCOUNT			RESERVES IN				

የዓመቱ መጨረሻ ሰኔ 30 ነው

YEAR ENDING JULY 7

ከኢትዮጵያ ብሔራዊ ባንክ የኢኮኖሚ ጥናትና ፕላን መምሪያ የተገኘ

SOURCE : NATIONAL BANK OF ETHIOPIA,

ECONOMIC RESEARCH AND PLANNING DEPARTMENT

...መረጃ አልተገኘም

... DATA NOT AVAILABLE

ሠንጠረዥ ቸ.16/የቀጠለ/ TABLE L.16 Cont'd

የተጣራ በሚሊዮን የአሜሪካን ዶላር
NET TRANSACTIONS IN MILLION USD

ዓመተ ምዕራብ	ጊዜያዊ ሂሳብ				የካፒታል ሂሳብ			በገንዘብ ነክ ድርጅቶች ተቀማጭ ሂሳብና ል			የተጣራ ግድፈትና ስዕተት	2001/02 2002/03 2003/04 YEAR
	የዕቃዎች ንግድ	ግልጋሎቶች	የተዛወሩ ክፍያዎች	የተጣራ ብልጫ/ጉድለት	ጠቅላላ	የግል	የመንግሥት	ጠቅላላ	በዋና ዋናዎች	በሌሎች		
1994	-1243.3	104.5	783.3	-355.5	502.1	19.2	482.9	1339.1	670.5	668.6	271.6	2001/02
1995	-1373.7	121.9	1095.3	-156.4	349.5	-9.9	359.4	1677.6	928.9	748.7	156.2	2002/03
1996	-1986.7	252.7	1237.8	-496.3	388.3	190.3	198.0	2020.0	1309.2	710.8	127.2	2003/04
	TRADE BALANCE F.O.B.	SERVICES	TRANSFER PAYMENTS	NET SURPLUS /DEFICIT/	TOTAL	PRIVATE	CENTRAL GOVERNMENT	TOTAL	CENTRAL MONETARY	OTHER INSTITUTIONS	NET ERRORS AND OMISSION	YEAR
	CURRENT ACCOUNT				CAPITAL ACCOUNT			RESERVES IN				

የዓመቱ መጨረሻ ሰኔ 30 ነው

YEAR ENDING JULY 7

ከኢትዮጵያ ብሔራዊ ባንክ የኢኮኖሚ ጥናትና ፕላን መምሪያ የተገኘ

SOURCE : NATIONAL BANK OF ETHIOPIA,

ECONOMIC RESEARCH AND PLANNING DEPARTMENT

ኢትዮጵያ ከሌሎች አገሮች ጋር ያላት የገንዘብ ክፍያ ሚዛን
BALANCE OF PAYMENTS OF ETHIOPIA

ሠንጠረዥ ቸ.17	TABLE L.17				በሚሊዮን ብር		IN MILLION BIRR	
	1994	1995	1996+	1997				
1. የዕቃዎች የንግድ ሚዛን	-10621.2	-11653.3	-17161.4	-24356.8	1. TRADE BALANCE			
ወጪ ንግድ ኤፍ.ኤ.ቢ.	3864.3	4143.0	5194.9	7074.9	EXPORT F.O.B.			
ቡና	1393.8	1418.3	1933.2	2901.4	COFFEE			
ከቡና ሌላ	2470.5	2724.7	3261.7	4173.5	NON-COFFEE			
በገንዘብ ያልተለወጠ ወርቅ	300.7	361.0	421.4	454.2	NON-MONETARY GOLD			
ገቢ ንግድ ሲ.አይ.ኤፍ ከዘ.ሀ.	14485.5	15796.3	22356.3	31431.7	IMPORT C.I.F. OF WHICH			
ለዕቃዎች ማስጫኛና					FREIGHT AND			
ኢንሹራንስ የዋለ	INSURANCE			
2. ግልጋሎቶች					2. SERVICES			
ጉዞ	170.6	335.5	870.6	986.6	TRAVEL			
ገቢ	531.4	729.9	1340.8	1556.1	CREDIT			
ወጪ	360.9	394.4	470.2	569.6	DEBIT			
ሌላ ትራንስፖርት	658.1	714.5	495.8	611.7	OTHER TRANSPORT			
ገቢ	2062.8	2315.6	2800.7	3600.6	CREDIT			
ወጪ	1404.7	1601.1	2304.9	2988.9	DEBIT			
የመንግስት ሂሳብ ሌ.ቢ.ያ	962.4	1004.7	1503.8	1530.0	GOVERNMENT N.I.E			
ገቢ	1072.4	1246.0	1684.8	1712.0	CREDIT			
ወጪ	110.0	241.3	181.1	182.0	DEBIT			
ሥራ ላይ የዋለ ገንዘብ	-438.2	-399.2	-550.1	-309.6	INVESTMENT INCOME			
ገቢ	103.3	150.0	200.8	322.2	CREDIT			
ወጪ	541.5	549.2	750.9	631.7	DEBIT			
ሌሎች ግልጋሎቶች	-485.3	609.9	-190.3	-729.2	OTHER SERVICES			
ገቢ	863.4	1344.5	1939.7	1880.7	CREDIT			
ወጪ	1348.7	1954.4	2130.0	2610.0	DEBIT			
ግልጋሎቶች /የተጣራ/	867.5	2265.4	2129.8	2089.5	SERVICES (NET)			
3. የተጣራ የዕቃዎችና ግልጋሎቶች ገቢ	-9753.7	-9387.9	-15031.6	-22267.3	3. NET GOODS AND SERVICES (1+2)			
4. የተጣራ ክፍያዎች					4. TRANSFER			
ከግል	2594.8	4247.0	5808.2	7016.2	PRIVATE			
ገቢ	2715.3	4387.1	5972.2	7166.1	CREDIT			
ወጪ	120.5	140.1	164.0	149.9	DEBIT			
ከመንግስት	3323.8	5147.4	4901.5	6486.9	PUBLIC			
ገቢ	3382.5	5182.0	4959.1	6532.7	CREDIT			
ወጪ	58.7	34.6	57.6	45.8	DEBIT			
የተጣራ የተጣራ ክፍያዎች	5918.6	9394.4	10709.7	13503.1	TRANSFER (NET)			
5. የጊዜያዊ ሂሳብ የተጣራ ብልጫ	-3835.1	6.5	-4321.9	-8764.2	5. BALANCE ON C/A (3+4)			
6. ጥራ ገንዘብ ያልሆነ የረጅም ዘመን ከመንግስት	3947.1	2890.1	3360.1	3812.1	6. NON MONETARY LONG TERM CAPITAL			
ገቢ	4697.9	4815.0	4418.2	4938.7	GOVERNMENT			
ወጪ	750.8	1924.9	1058.1	1126.6	DEBIT			
7. የመሠረታዊ ሂሳቦች ሚዛን	112.0	2896.6	-961.8	-4952.1	7. BASIC BALANCES (5+6)			
8. የአጭር ዘመን የግል ክፍያ	63.8	-522.4	-224.3	-47.8	8. SHORT-TERM CAPITAL (NET)			
9. የተጣራ ስህተት ወይም ግድገዳ	2264.6	2272.9	1868.2	2830.4	9. NET ERRORS AND OMISSIONS			
10. የተቀማጭ ዋጋ ጭማሪ	10. REVALUATION OF RESERVES			
11. ኤ.ቢ.ዲ.አር ተቀማጭ	11. S.D.R. ALLOCATION			
12. የአጠቃላይ ሂሳቦች ሚዛን	2440.4	4647.1	682.1	-2169.5	12. OVBREALL BALANCE (7+8+9+10+11)			
13. የተጣራ የገንዘብ እንቅስቃሴ	13. NET MONETARY MOVEMENTS			
	2001/02	2002/03	2002/03+	2004/05				

የዓመቱ መጨረሻ ሰኔ 30 ነው

YEAR ENDING JULY 7

ከኢትዮጵያ ብሔራዊ ባንክ የኢኮኖሚ ጥናትና ፕላን መምሪያ የተገኘ

+ የታሪክ

+ REVISED

SOURCE : NATIONAL BANK OF ETHIOPIA,

ECONOMIC RESEARCH AND PLANNING DEPARTMENT