

በኢትዮጵያ ፌዴራላዊ ዲሞክራሲያዊ ሪፐብሊክ
 በብሔራዊ ፕላን ኮሚሽን
 የማዕከላዊ ስታቲስቲክስ ኤጀንሲ



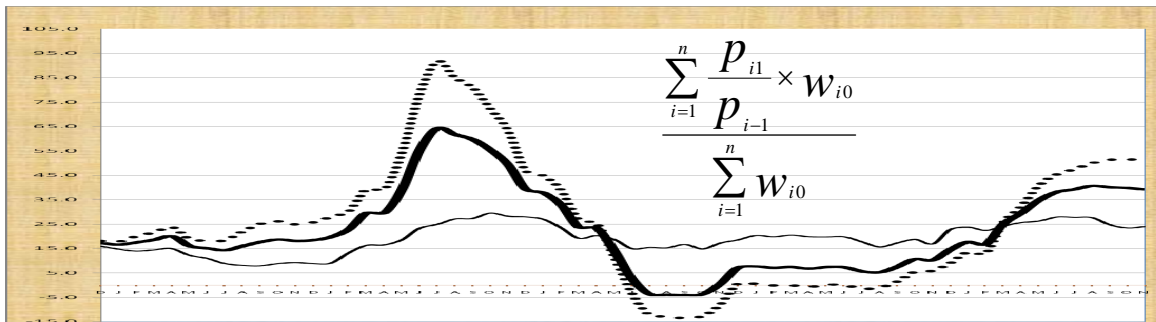
THE FEDERAL DEMOCRATIC REPUBLIC OF ETHIOPIA
 NATIONAL PLANNING COMMISSION
CENTRAL STATISTICAL AGENCY

የአገር አቀፍና የክልሎች የሽማግቾች ዋጋ መመዘኛ ኢንዱክሶች
 የሚያዝያ ወር 2009 ዓ.ም.

[ታህሳስ 2004= 100]

መረጃ ቁጥር 50

COUNTRY AND REGIONAL LEVEL CONSUMER PRICE INDICES



[December 2011 =100]

For the month of April 2017

Information No. 50

አዲስ አበባ

ሚያዝያ 26 ቀን 2009 ዓ.ም.

Tel: 251-11-1 553011

Fax: 251-11-1550334.

Web-site: www.csa.gov.et

ADDIS ABABA

04 May 2017

መግቢያ..... 1
 የወሩ ዋጋ ግሽበት ሁኔታ 7

የዘንድሮውና የአምናው ተመሳሳይ ወሮች የሽማግሌት ዋጋ መመዘኛ ጠቋሚ አሀዝ ንፅፅር በአገር አቀፍ ደረጃ 10

የዘንድሮውና የአምናው ተመሳሳይ ወሮች የሽማግሌት ዋጋ መመዘኛ ጠቋሚ አሀዝ ንፅፅር በአገር አቀፍና በክልሎች ደረጃ..... 11

የሠንጠረዦች ዝርዝር

ሠንጠረዥ ሀ: በጥናቱ የተሸፈኑ ገበያዎችና በኢንዱስትሪ ማዕቀፍ የተካተቱ ዕቃዎችና በዕቃዎች/አገልግሎቶች ብዛት በክልል..... 2

ሠንጠረዥ 1ሀ: ጠቅላላ የሽማግሌት ዋጋ መመዘኛ ኤንዱስትሪ በስሩ የተካተቱ ክፍሎች በአገር አቀፍ ደረጃ..... 13

ሠንጠረዥ 1ለ: ጠቅላላ ምግብና የምግብ ክፍሎች የሽማግሌት ዋጋ መመዘኛ ኤንዱስትሪ በአገር አቀፍ ደረጃ..... 14

ሠንጠረዥ 1ሐ: አገር አቀፍ የቤት ኪራይ፣ የቤት መስሪያ ዕቃዎች፣ ጤሃና እርዳታ የሽማግሌት ዋጋ መመዘኛ ኤንዱስትሪ 15

ሠንጠረዥ 2ሀ: ጠቅላላ የሽማግሌት ዋጋ መመዘኛ ኤንዱስትሪ በአገር አቀፍና በክልሎች ደረጃ 16

ሠንጠረዥ 2ለ: የምግብ ዋጋ መመዘኛ ኤንዱስትሪ ማጠቃለያ በአገር አቀፍ እና በክልሎች ደረጃ 18

ሠንጠረዥ 3ሀ: ጠቅላላ የሽማግሌት ዋጋ መመዘኛ ኤንዱስትሪ በስሩ የተካተቱ ክፍሎች ለአዲስ አበባ ከተማ መስተዳድር 20

ሠንጠረዥ 3ለ: ጠቅላላ ምግብና የምግብ ክፍሎች የሽማግሌት ዋጋ መመዘኛ ኤንዱስትሪ ለአዲስ አበባ ከተማ መስተዳድር 21

ሠንጠረዥ 4ሀ: ጠቅላላ የሽማግሌት ዋጋ መመዘኛ ኤንዱስትሪ በስሩ የተካተቱ ክፍሎች ለአፋር ክልላዊ መንግስት..... 22

ሠንጠረዥ 4ለ: ጠቅላላ ምግብና የምግብ ክፍሎች የሽማግሌት ዋጋ መመዘኛ ኤንዱስትሪ ለአፋር ክልላዊ መንግስት..... 23

ሠንጠረዥ 5ሀ: ጠቅላላ የሽማግሌት ዋጋ መመዘኛ ኤንዱስትሪ በስሩ የተካተቱ ክፍሎች ለአማራ ክልላዊ መንግስት..... 24

ሠንጠረዥ 5ለ: ጠቅላላ ምግብና የምግብ ክፍሎች የሽማግሌት ዋጋ መመዘኛ ኤንዱስትሪ ለአማራ ክልላዊ መንግስት..... 25

ሠንጠረዥ 6ሀ: ጠቅላላ የሽማግሌት ዋጋ መመዘኛ ኤንዱስትሪ በስሩ የተካተቱ ክፍሎች ለቤንሻንጉል-ጉሙዝ ክልላዊ መንግስት..... 26

ሠንጠረዥ 6ለ: ጠቅላላ ምግብና የምግብ ክፍሎች የሽማግሌት ዋጋ መመዘኛ ለቤንሻንጉል-ጉሙዝ ክልላዊ መንግስት..... 27

<p>ወንጠረዥ 7ሀ: ጠቅላላ የሽማግሌት ዋጋ መመዘኛ ኤንደክስና በስሩ የተካተቱ ክፍሎች ለድሬደዋ አስተዳደር ካውንስል</p>	28
<p>ወንጠረዥ 7ለ: ጠቅላላ ምግብና የምግብ ክፍሎች የሽማግሌት ዋጋ መመዘኛ ለድሬደዋ አስተዳደር ካውንስል</p>	29
<p>ወንጠረዥ 8ሀ: ጠቅላላ የሽማግሌት ዋጋ መመዘኛ ኤንደክስና በስሩ የተካተቱ ክፍሎች ለጋምቤላ ህዝቦች ክልላዊ መንግስት</p>	30
<p>ወንጠረዥ 8ለ: ጠቅላላ ምግብና የምግብ ክፍሎች የሽማግሌት ዋጋ መመዘኛ ለጋምቤላ ህዝቦች ክልላዊ መንግስት</p>	31
<p>ወንጠረዥ 9ሀ: ጠቅላላ የሽማግሌት ዋጋ መመዘኛ ኤንደክስና በስሩ የተካተቱ ክፍሎች ለለሐረር ህዝብ ክልላዊ መንግስት</p>	32
<p>ወንጠረዥ 9ለ: ጠቅላላ ምግብና የምግብ ክፍሎች የሽማግሌት ዋጋ መመዘኛ ኤንደክስ ለለሐረር ህዝብ ክልላዊ መንግስት</p>	33
<p>ወንጠረዥ 10ሀ: ጠቅላላ የሽማግሌት ዋጋ መመዘኛ ኤንደክስና በስሩ የተካተቱ ክፍሎች ለአሮሚያ ክልላዊ መንግስት</p>	34
<p>ወንጠረዥ 10ለ: ጠቅላላ ምግብና የምግብ ክፍሎች የሽማግሌት ዋጋ መመዘኛ ኤንደክስ ለአሮሚያ ክልላዊ መንግስት</p>	35
<p>ወንጠረዥ 11ሀ: ጠቅላላ የሽማግሌት ዋጋ መመዘኛ ኤንደክስና በስሩ የተካተቱ ክፍሎች ለደ.ኢ.ብ.ብ.ህ ክልላዊ መንግስት</p>	36
<p>ወንጠረዥ 11ለ: ጠቅላላ ምግብና የምግብ ክፍሎች የሽማግሌት ዋጋ መመዘኛ ኤንደክስ ለደ.ኢ.ብ.ብ.ህ ክልላዊ መንግስት</p>	37
<p>ወንጠረዥ 12ሀ: ጠቅላላ የሽማግሌት ዋጋ መመዘኛ ኤንደክስና በስሩ የተካተቱ ክፍሎች ለሶማሌ ክልላዊ መንግስት</p>	38
<p>ወንጠረዥ 12ለ: ጠቅላላ ምግብና የምግብ ክፍሎች የሽማግሌት ዋጋ መመዘኛ ኤንደክስ ለሶማሌ ክልላዊ መንግስት</p>	39
<p>ወንጠረዥ 13ሀ: ጠቅላላ የሽማግሌት ዋጋ መመዘኛ ኤንደክስና በስሩ የተካተቱ ክፍሎች ለትግራይ ክልላዊ መንግስት</p>	38
<p>ወንጠረዥ 13ለ: ጠቅላላ ምግብና የምግብ ክፍሎች የሽማግሌት ዋጋ መመዘኛ</p>	41

CONTENTS

	Page
Introduction.....	4
Inflation Rate.....	8
Comparison of CPI Movements, Current Vs Last Year's Similar Months, at country Level.....	10
Comparison of CPI Movements, Current Vs Last Year's Similar Months, at country and Regional Levels.....	11

List of Tables

Table a: Number of Markets Covered and Basket of Commodities by Region.....	2
Table 1a: General Consumer Price Index and Its Components at Country Level.....	13
Table 1b: Consumer Price Index of Total Food and Its Components at Country Level.....	14
Table 1c: Consumer Price Index of House Rent, Construction Materials, Water, Fuel and Power and Its Components at Country Level.....	15
Table 2a: Summary of General Consumer Price Indices at Country and Regional Levels.....	16
Table 2b: Summary of Consumer Price Indices of Food at Country and Regional Levels.....	18
Table 3a: General Consumer Price Index and Its Components for the City of Addis Ababa Administration.....	20
Table 3b: Consumer Price Index of Total Food and Its Components for the City of Addis Ababa Administration.....	21
Table 4a: General Consumer Price Index and Its Components for the Afar Regional State.....	22
Table 4b: Consumer Price Index of Total Food and Its Components for the Afar Regional State.....	23

Table 5a: General Consumer Price Index and Its Components for the Amhara Regional State.....	24
Table 5b: Consumer Price Index of Total Food and Its Components for the Amhara Regional State.....	25
Table 6a: General Consumer Price Index and Its Components for the Benishangul-Gumuz Regional State.....	26
Table 6b: Consumer Price Index of Total Food and Its Components for the Benishangul-Gumuz Regional State.....	27
Table 7a: General Consumer Price Index and Its Components for the Dire Dawa Administrative Council.....	28
Table 7b: Consumer Price Index of Total Food and Its Components for the Dire Dawa Administrative Council.....	29
Table 8a: General Consumer Price Index and Its Components for the Gambela Peoples Regional State.....	30
Table 8b: Consumer Price Index of Total Food and Its Components for the Gambela Peoples Regional State.....	31
Table 9a: General Consumer Price Index and Its Components for the Harari Peoples Regional State.....	32
Table 9b: Consumer Price Index of Total Food and Its Components for the Harari Peoples Regional State.....	33
Table 10a: General Consumer Price Index and Its Components for the Oromia Regional State.....	34
Table 10b: Consumer Price Index of Total Food and Its Components for the Oromia Regional State.....	35
Table 11a: General Consumer Price Index and Its Components for the SNNP Regional State.....	36
Table 11b: Consumer Price Index of Total Food and Its Components for the SNNP Regional State.....	37
Table 12a: General Consumer Price Index and Its Components for the Somali Regional State.....	38
Table 12b: Consumer Price Index of Total Food and Its Components for the Somali Regional State.....	39
Table 13a: General Consumer Price Index and Its Components for the Tigray Regional State.....	40
Table 13b: Consumer Price Index of Total Food and Its Components for the Tigray Regional State.....	41

መግቢያ

የሽማግሌት ዋጋ መመዘኛ ኢንዱክስ ማለት ሽማግሌት ለተወሰኑ ዕቃዎችና አገልግሎቶች የከፈሉትን አማካይ የዋጋ ለውጥ ለመለካት የሚያገለግል ጠቋሚ አህዝ ነው። የዋጋ መመዘኛ ኢንዱክስ አብዛኛውን ጊዜ መሠረት የሚያደርገው የቤተሰብ ገቢ፣ ፍጆታና ወጪ ጥናት ውጤት በሆነው ቤተሰቦች በዕቃዎችና ግልጋሎቶች ላይ ባወጡት የመቶኛ ድርሻ መጠንና የወቅቱ የገበያ ዋጋ ላይ ነው። በዚህ ሪፖርት ውስጥ የተካተቱት 12 ኢንዱክሶች (የ11 ክልሎችና የአገር አቀፍ) መሠረት ያደረጉት የማዕከላዊ ስታቲስቲክስ ኤጀንሲ በ2003 በጀት ዓመት በመላ አገሪቱ በናሙና በተመረጡ ቦታዎች ያካሄደውን የቤተሰብ ገቢ፣ ፍጆታና ወጪ ጥናት ውጤት ነው።

ይህ ታህሳስ ወር 2004 ዓ.ምን መሠረት ያደረገው (ታህሳስ 2004=100) የሽማግሌት ዋጋ መመዘኛ ኢንዱክስ በክልል ደረጃ ሲዘጋጅ በዓይነቱ ለሦስተኛ ጊዜ የተዘጋጀ ሲሆን በታህሳሥ 1999 ዓ.ም. መሠረት ያደረገውን የሽማግሌት መመዘኛ ኢንዱክስ የሚተካ ነው።

የሚያዝያ ወር 2009 ዓ.ም. የዋጋ ግሽበት ሁኔታ

ሀ) የ12 ወራት ተንከባላይ አማካይ አገራዊ የዋጋ ግሽበት

ከሠንጠረዥ #ሐ; መረዳት እንደሚቻለው የሚያዝያ ወር 2009 ዓ.ም. የተመዘገበው የ12 ወራት ተንከባላይ አማካይ አገራዊ አጠቃላይ የዋጋ ግሽበት ካለፈው ዓመት ተመሳሳይ ወቅት ጋር ሲነጻጸር በ7.0 በመቶ ጭማሪ አሳይቶአል። በሚያዝያ ወር 2009 ዓ.ም. አገራዊ የ12 ወራት ተንከባላይ አማካይ የምግብ የዋጋ ግሽበት በ6.6 ከመቶ ዕድገት አሳይቶአል። የ12 ወራት ተንከባላይ አማካይ አገራዊ ምግብ ነክ ያልሆኑ የዋጋ ግሽበትም በ7.4 ከመቶ ጭማሪ አሳይቶአል። የ12 ወራት ተንከባላይ አማካይ የዋጋ ግሽበት ረዘም ያለ ጊዜ የዋጋ ግሽበት ሁኔታ የሚያሳይ ነው።

ለ) የዋጋ ግሽበት ሁኔታ ካለፈው ዓመት ተመሳሳይ ወር ጋር በማነፃፀር

የዋጋ ግሽበት ሁኔታ ካለፈው ዓመት ተመሳሳይ ወር ጋር በማነፃፀር የሚገኘው ውጤት ወቅታዊ የዋጋ ግሽበት ሁኔታን ይገልጻል። ሠንጠረዥ (መ) የሚያሳየው የዋጋ ግሽበት ሁኔታ ካለፈው ዓመት ተመሳሳይ ወር ጋር በማነፃፀር ነው። ከሠንጠረዥ መረዳት እንደሚቻለው የሚያዝያ ወር 2009 ዓ.ም. አጠቃላይ የዋጋ ግሽበት ካለፈው ዓመት በሚያዝያ ወር 2008 ዓ.ም. ጋር ሲነጻጸር በ8.6 ከመቶ ከፍ ብሎአል። ለዚህ ጭማሪ ምክንያቱ በሚያዝያ ወር 2009 ዓ.ም. የተመዘገበው አጠቃላይ የዋጋ መመዘኛ ኢንዱክስ 163.4 ከመቶ በሚያዝያ ወር 2008 ከተመዘገበው 150.5 ከመቶ አጠቃላይ የዋጋ መመዘኛ ኢንዱክስ በልጦ በመገኘቱ ነው። የምግብ ዋጋ ግሽበት የሚያዝያ ወር 2009 ዓ.ም. ካለፈው ዓመት የሚያዝያ ወር 2008 ዓ.ም. ጋር ሲነጻጸር በ12.2 ከመቶ ጭማሪ አሳይቶአል። ለዚህ ጭማሪ ምክንያቱ በሚያዝያ ወር 2009 ዓ.ም. የተመዘገበው የምግብ ዋጋ መመዘኛ ኢንዱክስ 166.2 ከመቶ በሚያዝያ ወር 2008 ዓ.ም. ከተመዘገበው 148.0 ከመቶ የምግብ ዋጋ መመዘኛ ኢንዱክስ በልጦ በመገኘቱ ነው። በያዝነው ወር በእህል ክፍሎች (በተለይ ጤፍ፣ ስንዴ፣በቆሎ፣ ማሽላና ገብስ) ላይ ጭማሪ ታይቶአል። በእህሎች ላይ የታየው የዋጋ ጭማሪ ጠንከር ያለ በመሆኑ የምግብ ዋጋ ግሽበት ከፍ እንዲል አድርጓል። ሆኖም በአትክልትና ፍራፍሬ፣ በጥራጥሬና ድንችና ስረስሮች እና ቡና ዋጋ ላይ ቅናሽ ታይቷል። ምግብ ነክ ያልሆኑ የኢንዱክሱ ክፍሎች የዋጋ ግሽበት የሚያዝያ ወር 2009 ዓ.ም. ካለፈው ዓመት የሚያዝያ ወር 2008 ዓ.ም. ጋር ሲነጻጸርም የ4.3 በመቶ አነስተኛ ጭማሪ አሳይቶአል። ምግብ ነክ ያልሆኑ የኢንዱክሱ ክፍሎች የዋጋ ግሽበት ካለፈው ተመሳሳይ ወቅት ጋር ሲነጻጸር ከፍ እንዲል ካደረጉት ዋና ምክንያቶች ውስጥ ልብስና መጫሚያ፣ የማገዶ እንጨት፣ የቤት ዕቃዎችና የቤት ማሰገጫዎች ላይ የታየው የዋጋ ጭማሪ ነው። የወሩ የጫት ዋጋ ግን ቅናሽ አሳይቷል። በክልል ደረጃ ሲታይ በኒሻንጉል ጉሙዝ፣ ጋምቤላ፣ ኦሮሚያ እና ደቡብ ፈጣን የዋጋ ጭማሪ አሳይተዋል።

ሐ) የዋጋ ግሽበት ሁኔታ የአሁኑን ወር ካለፈው ወር ጋር በማነፃፀር

የሚያዝያ ወር 2009 ዓ.ም. አጠቃላይ የዋጋ ግሽበት ካለፈው ወር ጋር ሲነጻጸር በ1.6 ከመቶ ጭማሪ አሳይቶአል። ወርሃዊ የዋጋ ግሽበት ምጣኔው በመጨረሻዎቹ ሁለት ተከታታይ ወራት መካከል ያለውን የዋጋ ለውጥ ለመለካት ያገለግላል። ወርሃዊ የዋጋ ግሽበት ምጣኔው የወቅቱን ሁኔታ የሚሳይ በመሆኑ የአጭር ጊዜ ክስተቱን ብቻ ያመለክታል።

April 2017 Country Level Inflation Rate

a) 12 months Moving Average Inflation at Country Level

As it is indicated in Table 'C' below the country level overall inflation rate (annual change based on 12 months Moving Average) rose by 7.0 percent in April 2017 as compared to the one observed in a similar period a year ago. The country level food inflation increased by 6.6 percent as compared to the one observed a year ago. The country level Non-food inflation rate increased by 7.4 percent in April 2017 as compared to the one observed in April 2016. The 12 months moving average inflation rate shows the longer term inflationary situation.

b) Inflation based on comparison of Current vs. Last year's similar month at Country Level (Year-on-Year Change)

Inflation based on comparison of Current vs. Last year's similar month shows the current inflation situation. Table (D) shows Inflation rate based on last year's similar month comparison. As can be seen from the table the April 2017 General year-on-year inflation has increased by 8.6 percent as compared to the one observed in April 2016. The 8.6 percent rise in General inflation rate is due to the fact that the General Consumer Price Index (CPI) of 163.4 percent observed in April 2017 was higher than the corresponding 150.5 percent General Consumer Price Index (CPI) observed in April 2016. The year-on-year Food inflation has increased by 12.2 percent in April 2017 as compared to the one observed in April 2016. The reason for the increase in the food Inflation rate was that the 166.2 percent Food Consumer Price Index (CPI) observed in April 2017 was greater than the corresponding 148.0 percent Food Consumer Price Index (CPI) observed in April 2016. There was increase in food prices of Cereals (Specially Teff, Maize, Wheat, Sorghum and Barely) during the month under review. The stronger rise in the prices of cereals tended to push up the food inflation rate. On the other hand, Vegetables and Fruits, Pulses, Potatoes and other Tubers and coffee showed a decline in their prices. The Non-Food inflation also increased slowly i.e. by 4.6 percent in April 2017 as compared to the one observed in April 2016. The rise in Inflation in the Non-food component is mainly due to rise in the prices of Clothing and Footwear, Firewood, and Household goods and furnishings. Chat prices showed a decline in the current month. Region wise, Benishangul-Gumuz, Gambella, Oromia and SNNP showed rapid increase in their prices.

Inflation based on comparison of Current vs. Last month at Country Level (month-on-month)

The month-on-month General CPI for April 2017 has showed an increase of 1.6 percent as compared to the preceding month. The monthly inflation rate measures the price change between the two latest months. Although up to date, it can be affected by seasonal and other short term effects.

ሠንጠረዥ ሐ: በአገር አቀፍ ደረጃ የ12 ወራት ተንከባላይ አማካይ የዋጋ ግሽበት ሁኔታ

Table C: The Country Level 12 months Moving Average Inflation Rate

በጀት ዓመት (ወር)	የዋጋ ግሽበት ሁኔታ			Budget Year and months
	አጠቃላይ የዋጋ ግሽበት	የምግብ የዋጋ ግሽበት	የምግብ ነክ ያልሆኑ የዋጋ ግሽበት	
ዓመታዊ አማካይ ሐምሌ 2004 - ሰኔ 2005	22.9	26.6	18.4	Annual Average July 2012 – June 2013
ዓመታዊ አማካይ ሐምሌ 2005 - ሰኔ 2007	8.9	6.7	11.6	Annual Average July 2013 – June 2014
ዓመታዊ አማካይ ሐምሌ 2006 - ሰኔ 2007	7.6	6.1	9.3	Annual Average July 2014 – June 2015
ዓመታዊ አማካይ ሐምሌ 2007 - ሰኔ 2008	9.6	11.1	8.0	Annual Average July 2015 – June 2016
የካቲት 2008	10.3	12.5	8.0	February 2016
መጋቢት 2008	10.2	12.2	8.1	March 2016
ሚያዝያ 2008	10.1	11.8	8.2	April 2016
ግንቦት 2008	9.9	11.6	8.1	May 2016
ሰኔ 2008	9.7	11.2	8.0	June 2016
ሐምሌ 2008	9.2	10.3	7.9	July 2016
ከሐሴ 2008	8.7	9.4	7.9	August 2016
መስከረም 2009	8.3	8.6	8.0	September 2016
ጥቅምት 2009	7.8	7.5	8.0	October 2016
ህዳር 2009	7.5	7.1	8.0	November 2016
ታህሳስ 2009	7.3	6.5	8.1	December 2016
ጥር 2009	6.9	6.0	8.0	January 2017
የካቲት 2009	6.8	5.9	7.8	February 2017
መጋቢት 2009	6.9	6.1	7.8	March 2017
ሚያዝያ 2009	7.0	6.6	7.4	April 2017
Budget Year	Inflation Rate			
	Overall Inflation Rate	Food Inflation Rate	Non-food Inflation Rate	

ሠንጠረዥ መ: የዘንድሮውና የአምናው ተመሳሳይ ወሮች የሽማግሌት ዋጋ መመዘኛ ኢንዱስትሪ

ለውጥ ንፅፅር በአገር አቀፍ ደረጃ ማጠቃለያ

Table D: Summary of Comparison of CPI Movements, Current vs. Last year's Similar Months at Country Level

በጀት ዓመት (ወር)	የዋጋ ግሽበት ሁኔታ			Budget Year and months
	አጠቃላይ የዋጋ ግሽበት	የምግብ የዋጋ ግሽበት	የምግብ ነክ ያልሆኑ የዋጋ ግሽበት	
ዓመታዊ አማካይ ሐምሌ 2004 - ሰኔ 2005	13.8	13.2	15.0	Annual Average July 2012 – June 2013
ዓመታዊ አማካይ ሐምሌ 2005 - ሰኔ 2007	8.1	5.9	10.5	Annual Average July 2013 – June 2014
ዓመታዊ አማካይ ሐምሌ 2007 - ሰኔ 2007	7.7	7.4	8.0	Annual Average July 2014 – June 2015
ዓመታዊ አማካይ ሐምሌ 2007 - ሰኔ 2008	9.7	11.3	8.1	Annual Average July 2015 – June 2016
የካቲት 2008	8.9	9.2	8.5	February 2016
መጋቢት 2008	7.5	7.3	7.8	March 2016
ሚያዝያ 2008	7.4	6.3	8.7	April 2016
ግንቦት 2008	7.9	8.4	7.4	May 2016
ሰኔ 2008	7.5	7.2	7.8	June 2016
ሐምሌ 2008	6.0	4.1	8.3	July 2016
ነሐሴ 2008	5.9	4.4	7.6	August 2016
መስከረም 2009	6.9	6.1	7.8	September 2016
ጥቅምት 2009	5.6	3.4	8.2	October 2016
ህዳር 2009	7.0	6.1	8.1	November 2016
ታህሳስ 2009	6.7	5.3	8.2	December 2016
ጥር 2009	6.1	5.0	7.4	January 2017
የካቲት 2009	7.0	7.8	6.2	February 2017
መጋቢት 2009	8.5	9.6	7.3	March 2017
ሚያዝያ 2009	8.6	12.2	4.6	April 2017
Budget Year	Inflation Rate			
	Overall Inflation Rate	Food Inflation Rate	Non-food Inflation Rate	

ሠንጠረዥ ሠ: የአሁኑና ያለፈው ወር የሽማግሌት ዋጋ መመዘኛ ኢንዱስትሪ
ለውጥ ንፅፅር በአገር አቀፍ ደረጃ ማጠቃለያ

Table E: Summary of Comparison of CPI Movements, Current vs. Last month at Country Level

በጀት ዓመት (ወር)	የዋጋ ግሽበት ሁኔታ			Budget Year and months
	አጠቃላይ የዋጋ ግሽበት	የምግብ ግሽበት	የምግብ ነክ ያልሆኑ የዋጋ ግሽበት	
ዓመታዊ አማካይ ሐምሌ 2004 - ሰኔ 2005	0.6	0.3	0.9	Annual Average July 2012 – June 2013
ዓመታዊ አማካይ ሐምሌ 2005 - ሰኔ 2007	0.7	0.5	0.8	Annual Average July 2013 – June 2014
ዓመታዊ አማካይ ሐምሌ 2007 - ሰኔ 2007	0.8	1.0	0.6	Annual Average July 2014 – June 2015
ዓመታዊ አማካይ ሐምሌ 2007 - ሰኔ 2008	0.6	0.6	0.6	Annual Average July 2015 – June 2016
የካቲት 2008	-0.1	-1.3	1.3	February 2016
መጋቢት 2008	0.6	1.1	0.1	March 2016
ሚያዝያ 2008	1.5	1.3	1.7	April 2016
ግንቦት 2008	1.3	2.6	-0.1	May 2016
ሰኔ 2008	1.0	1.3	0.7	June 2016
ሐምሌ 2008	0.5	0.0	1.0	July 2016
ነሐሴ 2008	0.4	1.4	-0.8	August 2016
መስከረም 2009	2.0	3.5	0.3	September 2016
ጥቅምት 2009	-1.0	-2.3	0.6	October 2016
ህዳር 2009	-0.7	-2.1	0.9	November 2016
ታህሳስ 2009	-0.3	-0.9	0.4	December 2016
ጥር 2009	0.6	0.5	0.7	January 2017
የካቲት 2009	0.8	1.3	0.2	February 2017
መጋቢት 2009	2.0	2.8	1.1	March 2017
ሚያዝያ 2009	1.6	3.7	-0.8	April 2017
	<i>Inflation Rate</i>			
	Overall Inflation Rate	Food Inflation Rate	Non-food Inflation Rate	

**የዘንድሮውና የአምናው ተመሳሳይ ወሮች የችርቻሮ ዋጋ መመዘኛ ጠቋሚ አሀዝ
ንፅፅር በአገር አቀፍ ደረጃ**

Comparison of CPI Movements, Current vs Last year's Similar Months at Country Level

ከሠንጠረዥ 1(ሀ) መረዳት እንደሚቻለው የሚያዝያ ወር 2009 ዓ.ም የአገር አቀፍ ጠቅላላ የችርቻሮ ዋጋ ኢንዱክስ ከሚያዝያ ወር 2008 ዓ.ም ጠቅላላ ኢንዱክስ ጋር ሲነፃፀር በ8.6 ከመቶ ጭማሪ አሳይቶአል። ለዚህ ጭማሪ ምክንያት የሆኑት ምግብና አልኮል ያልሆኑ መጠጦች 12.2 ከመቶ፣ ልብስና መጫሚያ በ2.6 ከመቶ፣ የቤት ኪራይ፣ የቤት መሥሪያ ዕቃዎች፣ ውሃና ኢነርጂ በ5.0 ከመቶ፣ የቤት ዕቃዎች፣ ቤት ማስገጫዎች፣ የቤት ቁሳቁስና የቤት ሠራተኛ ደመወዝ በ8.7 ከመቶ፣ ህክምና 3.2 ከመቶ፣ ትራንስፖርት 10.4 ከመቶ፣ መገናኛ በ9.4 ከመቶ፣ መዝናኛና ባህል የ9.2 ከመቶ፣ ትምህርት በ0.1 ከመቶ፣ ሬስቶራንትና ሆቴሎች በ4.4 ከመቶ እና ሌሎች ዕቃዎችና አገልግሎቶች በ5.9 ከመቶ በየኢንዱስትሪው ላይ ጭማሪ በማሳየታቸው ነው። በሌላ በኩል መጠጥ፣ሲጃራና ትምባሆ በ1.8 ከመቶ በኢንዱስትሪ ላይ ቅናሽ አሳይቶአል።

The April 2017 Country Level Consumer Price Index has increased by 8.6 percent as compared to April 2016 (Table 1(a)). This increase in the General Consumer Price Index is attributed to the rise observed in the indices of Food and Non-alcoholic beverages 12.2 percent, Clothing and Footwear by 2.6 percent, House Rent, Construction Materials, Water and Fuel and Power by 5.0 percent, Furniture, Furnishings, Household Equipment and Operation by 8.7 percent, Health by 3.2 percent, Transport by 10.4 percent, Communication by 9.4 percent, Recreation and Culture by 9.2 percent, Education by 0.1 percent, Restaurant and Hotels 4.4 percent and Miscellaneous Goods by 5.9 percent. On the other hand, Alcoholic Beverages and Tobacco declined by 1.8 percent.

ሠንጠረዥ 1(ለ) እንደሚያሳየው ካለፈው ዓመት ተመሳሳይ ወር ጋር ሲነፃፀር አብዛኛዎቹ የምግብ ክፍሎች ጭማሪ አሳይተዋል። ዳቦና እህል በ12.3 ከመቶ፣ ሥጋ በ16.8 ከመቶ፣ ወተት፣ አይብና ዕንቁላል በ10.9 ከመቶ፣ ዘይትና ቅባቶች በ13.0 ከመቶ፣ ፍራፍሬ 8.9 ከመቶ፣ አትክልት፣ ጥራጥሬ፣ ድንችና ሌሎች ስራ ስሮች በ10.8 ከመቶ፣ ሰኋር ማርና ጅኮሌት በ14.2፣ ሌሎች ምግቦች በ10.3 ከመቶ እና አልኮል ያልሆኑ መጠጦችና ቡና በ15.4 በየኢንዱስትሪው ላይ ዕድገት አሳይተዋል።

Most of the components of Food index showed increase as compared to similar month last year (Table 1(b)). Bread and Cereals by (12.3 percent), Meat (16.8 percent), Milk, Cheese and Eggs (10.9 percent), oils and Fats by (13.0 percent), Fruits by (8.9 percent), Vegetables and Pulses, Potatoes and Tubers declined by (10.8 percent), Sugar, Jam, Honey, and chocolate by (14.2 percent), Other Food Products and spices n.e.c by (10.3 percent), and Non-Alcoholic beverages and Coffee by (15.4 percent).

**የዘንድሮውና የአምናው ተመሳሳይ ወሮች
የችርቻሮ ዋጋ መመዘኛ ጠቋሚ አሀዝ ንፅፅር በአገር አቀፍና በክልሎች ደረጃ**
Comparison of CPI Movements, Current vs Last year at Country and
Regional Levels

ከሠንጠረዥ 2(ሀ) መረዳት እንደሚቻለው የሚያዝያ ወር 2009 ዓ.ም የአገር አቀፍ ጠቅላላ የችርቻሮ ዋጋ መመዘኛ ኢንዱክስ ከሚያዝያ ወር 2008 ዓ.ም ጠቅላላ ኢንዱክስ ጋር ሲነፃፀር በ8.6 ከመቶ ጭማሪ አሳይቶአል። ለዚህ ጭማሪ አስተዋጽኦ ያደረጉት አዲስ አበባ በ4.7 ከመቶ፣ አፋር 1.9 ከመቶ፣ አማራ 7.9 ከመቶ፣ ቤኔሻንጉል ጉሙዝ በ11.0 ከመቶ፣ ድሬዳዋ 7.2 ከመቶ፣ ጋምቤላ 7.6 ከመቶ፣ ሐረሪ በ9.8 ከመቶ፣ ኦሮሚያ በ5.5 ከመቶ፣ ደቡብ ብሄሮች ብሄረሰቦችና ሕዝቦች 12.5 ከመቶ፣ ሶማሌ በ19.4 ከመቶ እና ትግራይ 1.1 ከመቶ ጭማሪ በማሳየታቸው ነው።

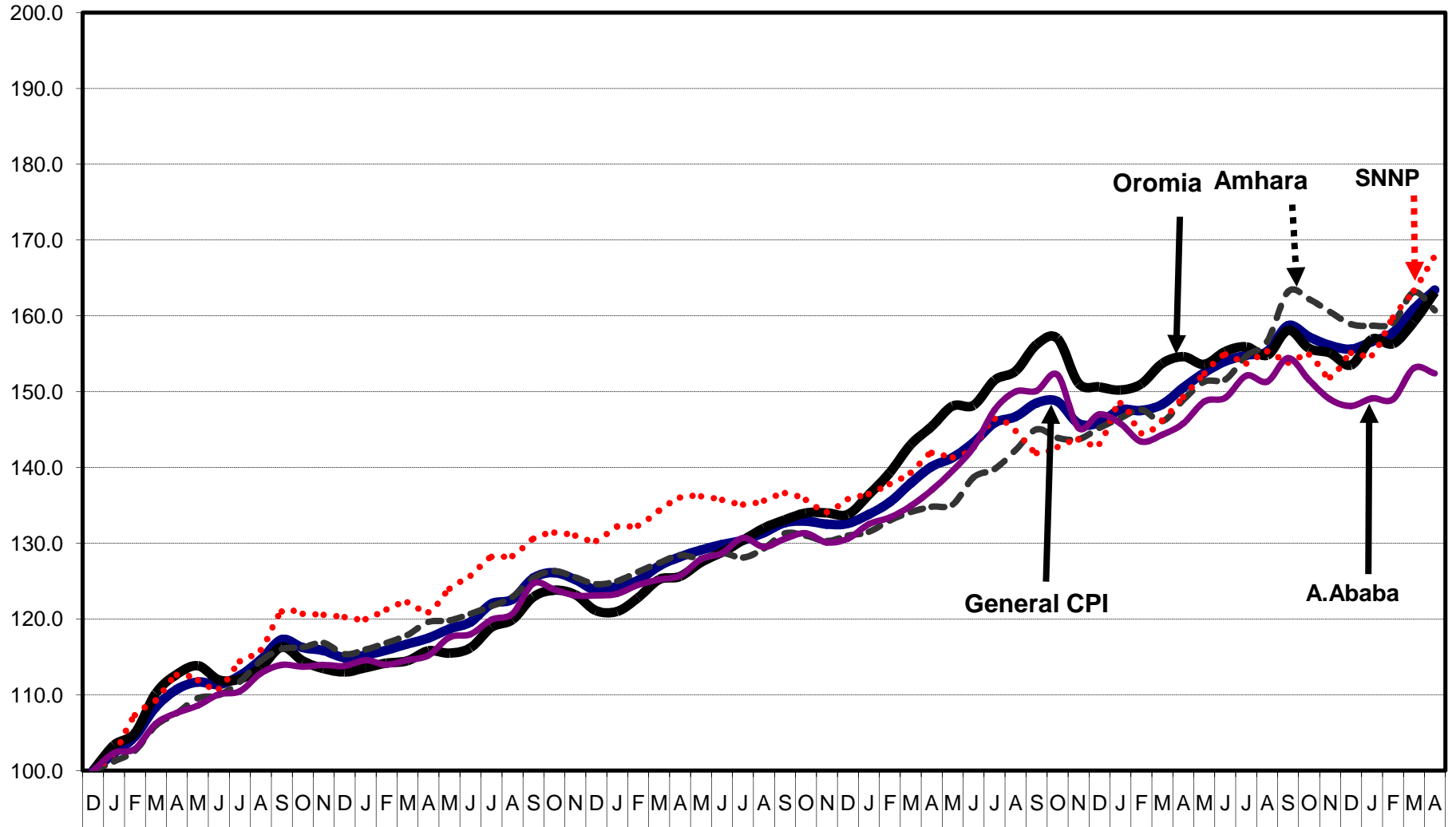
Table 2(a) also displays that the April 2017 Country level General Consumer Price Index has increased by 8.6 percent as compared to April 2016. This increase was attributed to the rise in the indices of its constituent regions; namely: Addis Ababa 4.7 percent , Afar by 1.9 percent, Amhara 7.9 percent, Benishangul Gumuz by 11.0 percent, Dire Dawa 7.2 percent, Gambella 7.6 percent, Harari by 9.8 percent, Oromia 5.5 percent, SNNP by 12.5 percent, Somali by 19.4 percent and Tigray by 1.1 percent.

ሠንጠረዥ 2(ለ) እንደሚያሳየው ለምግብ እንዴክስ በ12.2 ከመቶ መጨመር ምክንያት የሆኑት አዲስ አበባ በ4.8 ከመቶ፣ አማራ በ8.8 ከመቶ፣ ቤኔሻንጉል ጉሙዝ በ15.3 ከመቶ፣ ድሬዳዋ በ13.0 ከመቶ፣ ጋምቤላ በ11.1 ከመቶ፣ ሐረሪ በ9.4 ከመቶ፣ ኦሮሚያ 5.8 ከመቶ፣ ደቡብ ብሄሮች፣ ብሄረሰቦችና ሕዝቦች በ24.9 ከመቶ፣ ሶማሌ 16.2 ከመቶ እና ትግራይ በ11.2 ከመቶ በምግብ ኢንዱክሶቻቸው ላይ ጭማሪ አሳይተዋል። ሆኖም አፋር በ4.2 ከመቶ በምግብ ኢንዱክሱ ላይ ቅናሽ አሳይቷል።

Table 2(b) reveals the rise in the food index by 12.2 percent is due to the rise in the indices of the regions namely: Addis Ababa by 4.8 percent, Amhara 8.8 percent, Benishangul Gumuz by 15.3 percent, Dire Dawa 13.0 percent, Gambella 11.1 percent, Harari 9.4 percent, Oromia 5.8 percent, SNNP 24.9 percent, Somali 16.2 percent and Tigray 11.2 percent. However, Afar declined by 4.2 percent in its food index.

General CPI for Country Level and Major Regions

የሽማቾች ዋጋ ኢንዱክስ ለአገር አቀፍና ለዋና ዋና ክልሎች



የሽማቾች ዋጋ ኢንዱክስ

ሠንጠረዥ 10፣ ጠቅላላ የሽያጭ ዋጋ መመዘኛ ኢንዱስትሪ ቦሌር የተካተቱ ክፍሎች በአገር አቀፍ ደረጃ

ታህሳስ 2004 = 100

Table 1a: General Consumer Price Index and Its Components at Country Level

December 2011 = 100

ወርና ዓመት	ጠቅላላ ኢንዱስትሪ	ምግብና አልኮሎሊክ መጠጦች	ምግብ ነፃ ያልሆኑ ኢንዱስትሪ	Non-food Consumer Price Index Components											Month an Year
				መጠጥ ሲጃራና ትምባሆ	ልሳሳት መጫሚያ	የቤት ኪራይ፣ መሥሪያ ዕቃዎችና ሌሎች ነጻድና ሃይል	የቤት ዕቃዎች የቤት ቁሳቁስና የቤት ሠራተኛ ደመወዝ	ሕክምና	ትራንስፖርት	መገናኛ	መገናኛና ባህል	ትምህርት	ሬስቶራንትና ሆቴሎች	ሌሎች አገገሎቶች	
Month an Year	General Index	Food and Non-Alcoholic Beverages	Non-Food Index	Alcoholic Beverages and Tobacco	Clothing and Footwear	Housing, Water, Electricity, Gas and Other Fuels	Furnishings, Household Equipment and Routine Maintenance of the House	Health	Transport	Communication	Recreation and Culture	Education	Restaurants and Hotels	Misellaneous Goods and services	Month an Year
ታህሳስ 2004	100.0	100.0	100.0	100.0	100.0	100.0	100.0	100.0	100.0	100.0	100.0	100.0	100.0	100.0	December 2011
ሐምሌ 2004 - ሰኔ 2005	116.3	117.6	114.8	109.8	115.7	117.4	117.0	121.6	100.1	100.0	111.2	103.0	120.3	112.0	July 2012 - June 2013
ሐምሌ 2005 - ሰኔ 2006	125.7	124.5	127.0	125.1	128.9	131.2	128.6	138.8	100.9	100.0	119.0	105.0	135.3	118.8	July 2013 - June 2014
ሐምሌ 2006 - ሰኔ 2007	135.4	133.8	137.1	144.1	141.4	142.4	138.1	150.4	101.0	100.7	119.1	105.7	143.3	123.2	July 2014 - June 2015
ሐምሌ 2007 - ሰኔ 2008	148.5	148.7	148.2	153.7	150.1	156.5	149.4	164.4	100.8	101.9	137.0	118.4	158.3	128.7	July 2015 - June 2016
2008															2015/2016
ጥር 2008	147.6	146.6	148.6	159.1	150.2	154.5	150.6	167.8	102.3	102.4	137.2	120.9	160.1	128.6	January 2016
ፕሮቲት 2008	147.4	144.6	150.5	164.3	149.6	158.7	152.1	164.1	100.3	100.8	141.3	120.9	159.8	129.6	February "
መጋቢት 2008	148.3	146.2	150.6	163.0	152.4	157.7	153.5	167.2	99.9	100.5	140.9	120.9	159.9	129.0	March "
ግድም 2008	150.5	148.0	153.3	158.5	151.3	164.6	153.4	170.4	101.8	102.3	142.4	121.0	164.7	130.3	April "
ግንቦት 2008	152.5	151.9	153.1	149.1	152.7	167.5	153.4	174.2	97.7	102.3	140.4	121.0	162.6	131.4	May "
ሰኔ 2008	154.0	153.8	154.2	148.0	152.7	169.2	154.1	173.7	102.2	102.6	142.1	121.0	165.0	130.9	June "
2009															2016/2017
ሐምሌ 2008	154.7	153.8	155.8	149.0	152.2	173.0	154.7	168.3	101.4	100.5	141.9	121.1	167.5	131.8	July 2016
ኦገስት 2008	155.5	156.0	154.9	144.7	151.2	172.3	154.9	166.8	101.6	100.5	142.9	121.1	167.6	131.4	August "
መስከረም 2009	158.6	161.5	155.4	145.3	153.3	170.9	155.1	169.6	102.2	100.6	146.9	121.1	170.9	132.0	September "
ጥቅምት 2009	157.1	157.8	156.3	150.7	152.0	172.0	156.0	174.3	102.7	100.6	148.4	121.1	170.5	131.2	October "
ሀዳር 2009	156.0	154.5	157.7	156.3	153.4	173.2	157.1	174.3	102.6	100.9	151.1	121.1	170.5	132.3	November "
ታህሳስ 2009	155.7	153.2	158.5	160.0	153.8	172.2	158.5	177.4	103.7	100.9	153.5	121.1	172.8	133.8	December "
ጥር 2009	156.6	153.9	159.6	168.0	153.5	174.1	157.1	178.0	106.5	101.0	152.6	121.1	169.6	134.7	January 2017
ፕሮቲት 2009	157.8	155.9	159.9	165.2	155.4	173.0	159.6	182.3	107.3	102.9	152.7	121.1	170.3	136.6	February "
መጋቢት 2009	160.9	160.2	161.6	167.0	159.1	174.2	161.2	184.5	109.0	103.0	153.6	121.1	172.6	136.8	March "
ግድም 2009	163.4	166.2	160.3	155.6	155.2	172.8	166.7	175.9	112.4	112.0	155.6	121.1	171.9	138.0	April "

8.6 12.2 4.6 (1.8) 2.6 5.0 8.7 3.2 10.4 9.4 9.2 0.1 4.4 5.9

ሆንጠረዥ 30፣ ጠቅላላ የሽያጭ ዋጋ መመዘኛ ኢንዱክስ በሥሩ የተከተቱ ክፍሎች ለአዲስ አበባ ከተማ አስተዳደር

ታህሳስ 2004 = 100

Table 3a: General Consumer Price Index and Its Components for Addis Ababa City Administration

December 2011 = 100

ወርና ዓመት	ጠቅላላ ኢንዱክስ	ምግብና አልኮል ያልሆኑ ምግቦች	ምግብ ነፃ ያልሆኑ ኢንዱክስ	Non-food Consumer Price Index Components											Month an Year
				መጠጥ ሲጃራና ትምባሆ	ልብና መጫጫያ	የቤት ኪራይ፣ የቤት መሥሪያ ስቃዎች+ውሃ፣ ነዳጅናሃይል	የቤት ስቃዎች የቤት ግብአቶች የቤት ቁሳቁስና የቤት ሠራተኛ ደመወዝ	ሕክምና	ትራንስፖርት	መገናኛ	መዝናኛና ባህል	ትምህርት	ሬስቶራንትና ሆቴሎች	ሌሎች ስቃዎች አገገሎች	
Month an Year	General Index	Food and Non-Alcoholic Beverages	Non-Food Index	Alcoholic Beverages and Tobacco	Clothing and Footwear	Housing, Water, Electricity, Gas and Other Fuels	Furnishings, Household Equipment and Routine Maintenance of the House	Health	Transport	Communication	Recreation and Culture	Education	Restaurants and Hotels	Misellaneous Goods and services	Month an Year
ታህሳስ 2004	100.0	100.0	100.0	100.0	100.0	100.0	100.0	100.0	100.0	100.0	100.0	100.0	100.0	100.0	December 2011
ሐምሌ 2004 - ሰኔ 2005	114.4	119.3	111.1	111.4	119.4	116.3	111.2	113.2	99.1	100.0	107.9	107.3	110.0	115.9	July 2012 - June 2013
ሐምሌ 2005 - ሰኔ 2006	124.2	124.9	123.7	129.0	131.6	129.8	123.2	118.9	104.8	100.0	124.5	111.9	139.6	125.7	July 2013 - June 2014
ሐምሌ 2006 - ሰኔ 2007	133.6	140.1	129.2	138.6	139.9	134.4	130.8	141.1	102.8	100.0	130.6	111.9	151.7	135.8	July 2014 - June 2015
ሐምሌ 2007 - ሰኔ 2008	147.3	163.4	136.7	144.1	149.3	141.0	142.9	150.7	96.8	100.0	133.3	142.9	166.1	148.0	July 2015 - June 2016
2008															2015/2016
ጥር 2008	145.7	157.7	137.7	144.4	149.0	140.4	144.6	153.2	97.9	100.0	132.2	149.1	171.1	147.2	January 2016
የካቲት 2008	143.3	151.6	137.7	145.0	149.4	141.2	148.4	152.0	95.4	100.0	133.1	149.1	168.0	150.9	February "
መጋቢት 2008	144.1	155.1	136.8	142.8	149.7	138.4	148.2	155.3	95.4	100.0	137.4	149.1	166.8	151.4	March "
ጊዳር 2008	145.6	157.4	137.7	143.8	152.0	139.2	148.9	155.1	95.6	100.0	137.0	149.1	169.3	151.7	April "
ግንቦት 2008	148.7	164.5	138.2	146.1	152.6	140.7	149.0	153.7	95.4	100.0	137.2	149.1	168.0	152.3	May "
ሰኔ 2008	149.2	164.9	138.7	151.1	152.9	139.7	150.1	153.4	95.4	100.0	137.3	149.1	173.9	149.6	June "
2009															2016/2017
ሐምሌ 2008	152.1	170.1	140.2	154.5	153.5	142.3	152.4	155.7	95.4	100.0	139.5	149.1	175.2	151.3	July 2016
ኦገስት 2008	151.6	169.4	139.7	164.6	153.1	141.3	152.8	154.2	95.4	100.0	138.4	149.1	173.9	150.3	August "
መስከረም 2009	154.4	174.4	141.0	163.3	157.8	142.4	153.1	156.5	95.6	100.0	139.6	149.1	176.6	150.1	September "
ጥቅምት 2009	151.5	168.1	140.5	157.4	156.7	142.3	153.3	154.8	95.4	100.0	141.9	149.1	174.4	150.0	October "
ህዳር 2009	149.0	161.6	140.5	156.1	155.8	141.9	151.9	156.3	95.4	100.0	140.7	149.1	177.8	150.1	November "
ታህሳስ 2009	148.1	160.6	139.8	151.6	155.6	139.6	152.7	151.7	95.4	100.0	142.3	149.1	175.9	156.0	December "
ጥር 2009	149.1	159.0	142.6	159.5	157.0	143.7	154.2	159.2	99.8	100.0	140.7	149.1	178.1	156.8	January 2017
የካቲት 2009	149.0	157.3	143.4	156.6	156.2	145.3	155.7	161.1	102.8	100.0	141.6	149.1	175.6	160.0	February "
መጋቢት 2009	153.1	165.8	144.7	153.5	158.6	144.9	158.9	162.1	102.0	100.0	143.0	149.1	180.5	167.7	February "
ጊዳር 2009	152.4	165.0	144.0	149.9	141.2	145.0	162.0	171.4	104.0	112.8	146.1	149.1	178.1	163.4	April "

ሠንጠረዥ 4ሀ፣ ጠቅላላ የሽግግር ዋጋ መመዘኛ ኢንዱስትሪ ቢሥሩ የተካተቱ ክፍሎች ለአፋር ክልላዊ መንግስት

ታህሳስ 2004 =100

Table 4a: General Consumer Price Index and Its Components for Afar Regional State

December 2011 = 100

ወርና ዓመት	ጠቅላላ ኢንዱስትሪ	ምግብና አልኮል ያልሆኑ መጠባበቅ	ምግብ ነክ ያልሆኑ ኢንዱስትሪ	Non-food Consumer Price Index Components											ወርና ዓመት
				መጠጥ ሲጃራና ትምባህ	ልብስና መጫጫያ	የቤት ኪራይ፣ የቤት መሥሪያ ስቃዎች+ውሃ፣ ነጻጅናሃይል	የቤት ስቃዎች የቤት ግብአትዎች የቤት ቁሳቁስና የቤት ሠራተኛ ደመወዝ	ሕክምና	ትራንስፖርት	መገናኛ	መዝናኛና ባህል	ትምህርት	ሬስቶራንትና ሆቴሎች	ሌሎች ስቃዎች አገገሎቶች	
Month an Year	General Index	Food and Non-Food	Non-Food Index	Alcoholic Beverages and Tobacco	Clothing and Footwear	Housing, Water, and Utilities	Furnishings, Household Appliances	Health	Transport	Communication	Recreation and Culture	Education	Restaurants and Hotels	Miscellaneous Goods and Services	Month an Year
ታህሳስ 2004	100.0	100.0	100.0	100.0	100.0	100.0	100.0	100.0	100.0	100.0	100.0	100.0	100.0	100.0	December 2011
ሐምሌ 2004 - ሰኔ 2005	121.2	116.4	128.1	100.6	146.6	156.0	102.6	115.9	123.8	100.0	104.0	0.0	124.8	109.5	July 2012 - June 2013
ሐምሌ 2005 - ሰኔ 2006	134.3	124.7	148.1	105.5	175.6	185.9	115.3	154.6	145.7	100.0	117.2	0.0	141.3	122.4	July 2013 - June 2014
ሐምሌ 2006 - ሰኔ 2007	137.8	131.9	146.4	112.3	180.9	155.0	127.3	170.6	169.8	100.0	123.6	0.0	152.3	126.1	July 2014 - June 2015
ሐምሌ 2007 - ሰኔ 2008	163.6	150.4	182.5	151.1	189.2	240.5	152.4	185.4	174.9	100.0	137.5	0.0	174.8	130.0	July 2015 - June 2016
2008															2015/2016
ጥር 2008	160.9	147.3	180.3	163.2	179.5	228.6	154.8	195.1	186.0	100.0	138.1	0.0	172.7	132.4	January 2016
የካቲት 2008	166.6	146.6	195.4	180.5	181.8	274.7	157.4	190.6	175.7	100.0	138.6	0.0	176.2	128.5	February "
መጋቢት 2008	170.5	147.9	203.0	166.7	185.8	308.6	160.6	189.8	162.1	100.0	142.3	0.0	178.1	131.5	March "
ግንቦት 2008	175.2	154.4	205.1	172.5	188.4	309.5	162.5	186.6	175.7	100.0	139.7	0.0	179.9	126.4	April "
ግንቦት 2008	170.6	149.0	201.8	151.3	184.1	319.3	153.5	186.5	175.7	100.0	134.6	0.0	175.6	129.7	May "
ሰኔ 2008	174.2	147.6	212.5	153.4	210.0	331.4	161.2	188.3	175.7	100.0	150.2	0.0	183.3	127.7	June "
2009															2016/2017
ሐምሌ 2008	176.9	151.6	213.3	159.7	202.2	340.1	159.8	185.0	170.2	100.0	139.4	0.0	180.2	129.6	July 2016
ክሊሴ 2008	175.6	152.6	208.6	140.1	186.9	344.8	161.8	173.1	175.7	100.0	140.8	0.0	183.1	130.2	August "
መስከረም 2009	177.8	157.3	207.2	166.2	188.6	322.1	159.9	166.3	175.7	100.0	139.3	0.0	185.1	130.5	September "
ጥቅምት 2009	176.5	158.3	202.6	173.4	183.6	303.8	160.0	168.0	170.2	100.0	138.8	0.0	185.7	130.9	October "
ህዳር 2009	173.5	154.4	200.8	165.6	192.9	291.0	163.4	164.8	186.0	100.0	133.4	0.0	186.3	133.4	November "
ታህሳስ 2009	171.4	147.9	205.1	159.2	196.9	310.8	157.9	152.6	181.4	100.0	140.8	0.0	190.3	134.3	December "
ጥር 2009	174.6	149.3	210.9	187.1	190.6	319.0	161.5	150.5	170.2	100.0	136.1	0.0	194.8	135.8	January 2017
የካቲት 2009	168.5	147.9	198.1	136.6	195.7	298.4	159.1	161.3	174.2	100.0	142.7	0.0	189.6	133.5	February "
መጋቢት 2009	177.9	148.9	219.7	147.2	193.4	373.9	160.9	184.9	175.7	100.0	146.9	0.0	191.5	132.3	February "
ግንቦት 2009	178.6	147.9	222.7	159.4	192.7	376.6	162.7	185.2	188.3	100.0	148.8	0.0	191.5	127.1	April "

ሠንጠረዥ 5፡፡ ጠቅላላ የሽግግር ዋጋ መመዘኛ ኢንዱስትሪ ቢሥሩ የተካተቱ ክፍሎች ለአማራ ክልላዊ መንግስት
 ታህሳስ 2004 =100

Table 5a: General Consumer Price Index and Its Components for Amhara Regional State
 December 2011 = 100

ወርና ዓመት	ጠቅላላ ኢንዱስትሪ	ምግብና አልኮሎል ያልሆኑ መጠባባቾች	ምግብ ነጻ ያልሆኑ ኢንዱስትሪ	ምግብ ነጻ ያልሆኑ የኢንዱስትሪ ክፍሎች											Non-food Consumer Price Index Components	ወርና ዓመት
				መጠጥ ሲጃራና ትምባሆ	ላብስና መጫጫያ	የቤት ኪራይ፣ የቤት መሥሪያ ስቃዎች+ውሃ፣ ነጻጅናሃይል	የቤት ስቃዎች የቤት ግብአቶች የቤት ቁሳቁስና የቤት ሠራተኛ ደመወዝ	ሕክምና	ትራንስፖርት	መገናኛ	መዝናኛና ባህል	ትምህርት	ሬስቶራንትና ሆቴሎች	ሌሎች ስቃዎች አገገሎቶች		
Month an Year	General Index	Food and Non-Alcoholic Beverages	Non-Food Index	Alcoholic Beverages and Tobacco	Clothing and Footwear	Housing, Water, Electricity, Gas and Other Fuels	Furnishings, Household Equipment and Routine Maintenance of the House	Health	Transport	Communication	Recreation and Culture	Education	Restaurants and Hotels	Misellaneous Goods and services	Month an Year	
ታህሳስ 2004	100.0	100.0	100.0	100.0	100.0	100.0	100.0	100.0	100.0	100.0	100.0	100.0	100.0	100.0	December 2011	
ሐምሌ 2004 - ሰኔ 2005	116.8	120.0	113.5	121.7	107.4	109.1	124.2	118.3	103.7	100.0	108.3	100.0	118.5	111.9	July 2012 - June 2013	
ሐምሌ 2005 - ሰኔ 2006	125.8	125.6	126.0	139.4	114.5	121.3	141.2	146.9	99.1	100.0	113.0	100.0	134.7	120.1	July 2013 - June 2014	
ሐምሌ 2006 - ሰኔ 2007	132.4	128.7	136.2	149.4	125.7	133.5	154.0	161.4	103.2	104.9	115.9	102.1	143.3	123.3	July 2014 - June 2015	
ሐምሌ 2007 - ሰኔ 2008	146.0	141.4	150.7	156.8	130.3	155.3	169.2	164.2	119.0	112.3	121.2	100.0	160.5	125.2	July 2015 - June 2016	
2008															2015/2016	
ጥር 2008	146.5	141.9	151.3	158.0	128.2	154.8	170.5	173.8	123.1	113.0	125.1	100.0	162.4	124.7	January 2016	
የካቲት 2008	147.6	141.2	154.2	163.5	130.5	161.4	171.9	168.0	113.5	113.0	126.7	100.0	162.7	126.4	February "	
መጋቢት 2008	146.1	140.5	151.9	157.8	130.3	155.8	173.4	175.1	112.3	113.0	124.9	100.0	162.9	125.7	March "	
ጊዳር 2008	148.9	142.5	155.6	156.1	130.0	161.4	173.3	181.5	123.1	113.0	127.5	100.0	169.7	127.7	April "	
ግንቦት 2008	151.3	146.1	156.8	163.0	132.1	164.9	175.0	165.3	123.1	113.0	117.8	100.0	166.5	127.2	May "	
ሰኔ 2008	151.6	144.9	158.5	158.2	131.2	171.3	174.0	155.0	123.1	115.0	122.1	100.0	168.5	126.0	June "	
2009															2016/2017	
ሐምሌ 2008	154.7	146.7	163.1	156.6	129.0	181.7	174.7	162.9	127.3	113.0	125.1	100.0	173.9	128.6	July 2016	
ኦገስት 2008	157.1	152.0	162.3	158.0	129.3	178.2	178.1	152.3	123.9	113.0	126.2	100.0	174.7	128.0	August "	
መስከረም 2009	163.2	163.0	163.5	154.0	127.8	181.2	179.0	156.3	123.9	113.0	131.1	100.0	177.1	129.7	September "	
ጥቅምት 2009	162.2	160.4	164.1	156.4	127.7	180.9	179.9	177.6	124.2	113.0	119.2	100.0	178.0	128.7	October "	
ህዳር 2009	160.5	154.1	167.3	161.9	126.0	188.1	180.9	175.3	123.6	115.0	135.8	100.0	178.9	130.7	November "	
ታህሳስ 2009	158.9	151.9	166.2	160.9	126.9	186.1	181.2	177.1	120.8	115.0	130.6	100.0	176.6	133.5	December "	
ጥር 2009	158.7	154.5	163.1	157.1	127.7	179.2	181.5	181.9	131.1	115.0	132.3	100.0	171.7	133.5	January 2017	
የካቲት 2009	159.0	154.8	163.4	158.2	127.8	178.1	183.9	178.4	123.9	115.0	128.6	100.0	174.4	135.6	February "	
መጋቢት 2009	163.1	160.7	165.7	160.2	135.5	181.4	186.1	180.9	123.9	115.0	131.2	100.0	173.4	133.5	February "	
ጊዳር 2009	160.7	155.0	166.7	162.4	139.6	178.1	187.8	153.9	161.7	115.0	141.1	100.0	173.4	133.9	April "	

ሠንጠረዥ 60፤ ጠቅላላ የሽግግር ዋጋ መመዘኛ ኢንዱስትሪ ቢሥሩ የተካተቱ ክፍሎች ለበኒሻንጉል ጉሙዝ ክልላዊ መንግስት
 ታህሳስ 2004 =100

Table 6a: General Consumer Price Index and Its Components for Benishangul-Gumuz Regional State
 December 2011 = 100

ወርና ዓመት	ጠቅላላ ኢንዱስትሪ	ምግብና አልኮል ያልሆኑ ምግብ መጠባበቅ	ምግብ ነክ ያልሆኑ ኢንዱስትሪ	Non-food Consumer Price Index Components											ወርና ዓመት
				መጠጥ ሲጃራና ትምባሆ	ልብና መጫጫያ	የቤት ኪራይ፣ የቤት መሥሪያ ስቃዎች+ውሃ፣ ነጻጅናሃይል	የቤት ስቃዎች የቤት ግንቢዎች የቤት ቁሳቁስና የቤት ሠራተኛ ደመወዝ	ሕክምና	ትራንስፖርት	መገናኛ	መዝናኛና ባህል	ትምህርት	ሬስቶራንትና ሆቴሎች	ሌሎች ስቃዎች አገገሎቶች	
Month an Year	General Index	Food and Non-Food	Non-Food Index	Alcoholic Beverages and Tobacco	Clothing and Footwear	Housing, Water, and Utilities	Furnishings, Household Appliances	Health	Transport	Communication	Recreation and Culture	Education	Restaurants and Hotels	Miscellaneous Goods and Services	Month an Year
ታህሳስ 2004	100.0	100.0	100.0	100.0	100.0	100.0	100.0	100.0	100.0	100.0	100.0	100.0	100.0	100.0	December 2011
ሐምሌ 2004 - ሰኔ 2005	113.2	107.5	121.9	138.3	118.3	140.8	113.3	110.7	105.8	100.0	106.0	0.0	110.6	110.4	July 2012 - June 2013
ሐምሌ 2005 - ሰኔ 2006	123.5	114.9	136.4	167.7	130.4	165.0	119.0	136.3	107.2	100.0	109.8	0.0	121.1	115.8	July 2013 - June 2014
ሐምሌ 2006 - ሰኔ 2007	123.4	114.0	137.6	175.7	144.5	151.2	127.9	131.0	106.5	100.0	111.5	0.0	127.8	116.2	July 2014 - June 2015
ሐምሌ 2007 - ሰኔ 2008	134.1	127.5	144.0	181.5	152.2	156.3	140.2	157.0	106.5	100.0	115.1	0.0	130.6	120.1	July 2015 - June 2016
2007															2014/2015
2008															2015/2016
ጥር 2008	134.9	127.2	146.5	174.8	152.9	167.2	139.6	137.8	117.2	100.0	116.0	0.0	130.2	119.6	January 2016
የካቲት 2008	133.0	124.3	146.1	191.9	152.8	158.4	145.0	135.4	106.3	100.0	116.5	0.0	134.1	120.8	February "
መጋቢት 2008	130.9	121.1	145.7	196.0	152.4	153.0	142.8	170.1	104.7	100.0	116.3	0.0	134.9	120.3	March "
ሚያዝያ 2008	131.9	122.8	145.5	205.4	152.5	150.0	143.8	171.9	104.8	100.0	116.6	0.0	131.5	122.1	April "
ግንቦት 2008	134.0	126.5	145.3	182.3	153.5	150.7	144.2	206.3	104.9	100.0	115.8	0.0	130.5	127.8	May "
ሰኔ 2008	135.0	128.3	145.0	176.6	152.8	147.1	144.7	238.1	105.2	100.0	118.5	0.0	133.8	120.9	June "
2009															2016/2017
ሐምሌ 2008	135.6	128.0	147.0	175.0	149.9	156.8	141.1	232.7	105.4	100.0	119.3	0.0	136.6	123.8	July 2016
ኦገስት 2008	138.3	131.7	148.3	173.1	150.5	167.4	139.6	222.8	105.4	100.0	119.3	0.0	131.9	120.3	August "
መስከረም 2009	139.6	134.5	147.1	173.3	150.8	159.0	141.2	230.5	105.6	100.0	119.9	0.0	133.7	124.7	September "
ጥቅምት 2009	137.3	132.9	143.9	171.8	150.1	152.7	141.6	169.6	116.8	100.0	121.3	0.0	131.9	125.9	October "
ህዳር 2009	138.6	131.2	149.7	186.2	151.7	168.4	142.2	146.6	116.9	100.0	120.9	0.0	137.2	125.6	November "
ታህሳስ 2009	138.3	131.2	149.0	202.7	150.4	162.9	142.8	152.6	105.9	100.0	121.1	0.0	139.7	121.9	December "
ጥር 2009	138.7	132.2	148.5	211.6	153.2	155.5	141.7	169.3	106.2	100.0	120.6	0.0	139.2	122.2	January 2017
የካቲት 2009	140.1	131.8	152.6	192.7	150.9	176.0	143.5	141.2	119.0	100.0	121.1	0.0	139.0	127.1	February "
መጋቢት 2009	142.1	134.0	154.2	190.8	152.8	182.6	147.5	141.3	108.4	100.0	120.7	0.0	137.8	126.8	February "
ሚያዝያ 2009	146.4	141.6	153.7	189.9	146.3	184.7	150.2	141.3	109.1	100.0	121.1	0.0	137.8	116.8	April "

ሠንጠረዥ 701፣ ጠቅላላ የሽግግር ዋጋ መመዘኛ ኢንዱስትሪ ቢሥሩ የተካተቱ ክፍሎች ስርጭታዎች ከተማ አስተዳደር

ታህሳስ 2004 =100

Table 7a: General Consumer Price Index and Its Components for Dire Dawa City Administration

December 2011 = 100

ወርና ዓመት	ጠቅላላ ኢንዱስትሪ	ምግብና አልኮል ያልሆኑ ምግብ አገልግሎት	ምግብ ነጻ ያልሆኑ ኢንዱስትሪ	Non-food Consumer Price Index Components											Month an Year
				መጠጥ ሲጃራና ትምባሆ	ላብስና መጫጫያ	የቤት ኪራይ፣ የቤት መሥሪያ ስቃዎች+ውሃ፣ ነዳጅናሃይል	የቤት ስቃዎች የቤት ግብአት ስቃዎች የቤት ቁሳቁስና የቤት ሠራተኛ ደመወዝ	ሕክምና	ትራንስፖርት	መገናኛ	መዝናኛና ባህል	ትምህርት	ሬስቶራንትና ሆቴሎች	ሌሎች ስቃዎች አገገሎቶች	
Month an Year	General Index	Food and Non-Food	Non-Food Index	Alcoholic Beverages and Tobacco	Clothing and Footwear	Housing, Water, Utilities	Furnishings, Household Appliances	Health	Transport	Communication	Recreation and Culture	Education	Restaurants and Hotels	Misellaneous Goods and Services	Month an Year
ታህሳስ 2004	100.0	100.0	100.0	100.0	100.0	100.0	100.0	100.0	100.0	100.0	100.0	100.0	100.0	100.0	December 2011
ሐምሌ 2004 - ሰኔ 2005	113.3	111.8	114.5	91.3	131.1	123.3	110.3	105.7	117.4	100.0	103.6	100.0	139.1	108.7	July 2012 - June 2013
ሐምሌ 2005 - ሰኔ 2006	132.5	119.7	142.9	122.9	154.0	177.2	123.1	116.5	120.1	100.0	113.1	100.0	155.4	122.3	July 2013 - June 2014
ሐምሌ 2006 - ሰኔ 2007	147.0	129.2	161.7	181.0	165.0	182.0	135.7	122.7	121.8	100.0	123.9	100.0	158.4	138.3	July 2014 - June 2015
ሐምሌ 2007 - ሰኔ 2008	158.1	134.1	177.7	211.5	189.5	185.5	147.9	121.9	117.2	100.0	130.9	100.0	189.3	151.8	July 2015 - June 2016
2008															2015/2016
ጥር 2008	163.1	134.8	186.2	243.8	191.9	186.9	141.1	122.0	115.6	100.0	130.9	100.0	192.9	159.6	January 2016
ፍቅር 2008	167.4	132.1	196.4	290.3	188.9	183.6	149.3	122.0	115.6	100.0	130.9	100.0	194.4	151.0	February "
መጋቢት 2008	159.9	133.3	181.7	225.2	192.7	184.4	149.3	123.6	122.5	100.0	130.9	100.0	189.0	157.7	March "
ግንቦት 2008	165.2	135.5	189.5	259.3	191.5	180.6	153.3	122.1	115.6	100.0	130.9	100.0	197.1	156.9	April "
ግንቦት 2008	165.5	145.9	181.6	212.2	198.7	187.5	153.3	125.0	115.6	100.0	130.9	100.0	200.2	160.2	May "
ሰኔ 2008	161.0	141.7	176.8	191.3	194.6	184.0	152.5	125.0	122.5	100.0	130.9	100.0	210.2	159.7	June "
2009															2016/2017
ሐምሌ 2008	159.6	141.7	174.2	178.0	194.5	186.1	152.9	122.1	122.5	100.0	130.9	100.0	207.9	164.1	July 2016
ኦገስት 2008	162.9	145.3	177.3	194.5	191.2	189.1	146.6	123.5	122.5	100.0	130.9	100.0	202.5	162.8	August "
መስከረም 2009	162.5	149.3	173.3	175.9	196.6	185.7	149.4	125.1	122.5	100.0	130.9	100.0	206.0	164.1	September "
ጥቅምት 2009	168.7	148.9	184.9	214.1	206.2	185.9	155.4	121.4	122.5	100.0	130.9	100.0	212.6	170.3	October "
ህዳር 2009	167.3	146.2	184.5	207.7	205.6	190.8	152.1	123.5	122.5	100.0	130.9	100.0	214.1	167.4	November "
ታህሳስ 2009	168.6	144.3	188.5	227.3	203.3	193.2	154.0	125.1	122.5	100.0	133.7	100.0	204.3	167.3	December "
ጥር 2009	172.5	141.6	197.8	256.9	208.9	198.5	158.4	120.5	122.5	100.0	134.1	100.0	202.6	170.3	January 2017
ፍቅር 2009	172.9	140.3	199.7	276.5	211.4	187.0	154.8	122.0	125.2	100.0	136.2	100.0	203.5	172.8	February "
መጋቢት 2009	180.3	149.5	205.6	289.4	210.8	193.7	160.4	122.0	125.2	100.0	136.2	100.0	209.1	172.0	February "
ግንቦት 2009	177.1	153.1	196.8	249.7	221.2	195.3	151.9	124.9	115.6	115.0	135.3	100.0	208.9	167.6	April "

ሠንጠረዥ 8ሀ፣ ጠቅላላ የሽግግር ዋጋ መመዘኛ ኢንዱስትሪ ቤሥሩ የተካተቱ ክፍሎች ለጋምቤላ ክልል መገንባት

ታህሳስ 2004 =100

Table 8a: General Consumer Price Index and Its Components for Gambella Regional State

December 2011 = 100

ወርና ዓመት	ጠቅላላ ኢንዱስትሪ	ምግብና አልኮሎል ያልሆኑ መጠጦች	ምግብ ነክ ያልሆኑ ኢንዱስትሪ	ምግብ ነክ ያልሆኑ የኢንዱስትሪ ክፍሎች											መገናኛ
				መጠጥ ሲጃራና ትምባሆ	ልብና መጫጫያ	የቤት ኪራይ፣ የቤት መሥሪያ ስቃዎች+ውሃ፣ ነዳጅናሃይል	የቤት ስቃዎች የቤት ግብአቶች የቤት ቁሳቁስና የቤት ሠራተኛ ደመወዝ	ሕክምና	ትራንስፖርት	መገናኛ	መዝናኛና ባህል	ትምህርት	ሬስቶራንትና ሆቴሎች	ሌሎች ስቃዎች አገገሎቶች	
Month an Year	General Index	Food and Non-Alcoholic Beverages	Non-Food Index	Alcoholic Beverages and Tobacco	Clothing and Footwear	Housing, Water, Electricity, Gas and Other Fuels	Furnishings, Household Equipment and Routine Maintenance of the House	Health	Transport	Communication	Recreation and Culture	Education	Restaurants and Hotels	Misellaneous Goods and services	Month an Year
ታህሳስ 2004	100.0	100.0	100.0	100.0	100.0	100.0	100.0	100.0	100.0	100.0	100.0	100.0	100.0	100.0	December 2011
ሐምሌ 2004 - ሰኔ 2005	114.9	114.8	115.1	112.9	130.3	105.7	117.9	116.8	113.4	100.0	114.5	0.0	122.0	126.6	July 2012 - June 2013
ሐምሌ 2005 - ሰኔ 2006	125.4	124.2	127.4	115.9	151.0	119.9	130.4	139.7	116.6	100.0	134.3	0.0	131.6	146.8	July 2013 - June 2014
ሐምሌ 2006 - ሰኔ 2007	130.2	129.9	130.6	122.3	153.9	120.1	132.0	154.9	122.6	100.0	137.2	0.0	139.1	149.2	July 2014 - June 2015
ሐምሌ 2007 - ሰኔ 2008	141.5	142.9	139.0	137.4	171.7	118.0	140.9	169.1	134.7	100.0	145.3	0.0	157.3	157.3	July 2015 - June 2016
2008															2015/2016
ጥር 2008	139.0	137.8	140.9	128.4	180.7	122.3	142.7	175.8	142.3	100.0	144.3	0.0	161.1	153.0	January 2016
የካቲት 2008	140.8	140.5	141.3	132.2	167.9	121.5	142.2	164.4	168.6	100.0	146.6	0.0	160.4	153.3	February "
መጋቢት 2008	139.1	140.4	136.8	131.7	162.0	115.4	143.1	170.2	126.0	100.0	146.6	0.0	166.4	148.2	March "
ጊዮሀያ 2008	141.5	142.8	139.2	132.3	174.7	112.9	145.6	173.2	142.8	100.0	146.6	0.0	163.8	155.5	April "
ግንቦት 2008	144.5	148.1	138.5	138.0	167.9	112.5	146.2	180.3	126.4	100.0	147.3	0.0	162.9	155.5	May "
ሰኔ 2008	147.0	150.1	141.8	145.1	173.4	118.1	148.3	178.1	126.7	100.0	151.1	0.0	162.1	153.6	June "
2009															2016/2017
ሐምሌ 2008	147.7	151.7	141.1	134.3	182.9	116.2	148.9	181.4	126.7	100.0	149.8	0.0	163.6	154.3	July 2016
ኦገስት 2008	145.5	148.3	140.7	135.6	184.3	111.5	147.4	164.1	143.7	100.0	150.3	0.0	168.6	153.1	August "
መስከረም 2009	148.6	154.9	138.1	135.6	170.6	109.0	138.5	199.2	143.9	100.0	150.3	0.0	166.5	156.6	September "
ጥቅምት 2009	147.9	151.5	142.0	135.8	175.5	117.6	146.3	179.0	144.0	100.0	149.4	0.0	169.2	154.7	October "
ህዳር 2009	145.5	146.1	144.5	153.1	183.6	112.7	145.8	190.0	144.2	100.0	163.0	0.0	169.0	158.1	November "
ታህሳስ 2009	147.4	150.0	143.1	124.1	184.9	113.4	148.8	201.5	144.6	100.0	162.1	0.0	176.2	167.7	December "
ጥር 2009	146.7	150.1	141.0	129.3	188.3	112.4	140.8	190.1	144.7	100.0	153.5	0.0	173.0	159.4	January 2017
የካቲት 2009	145.2	150.2	136.9	112.9	178.3	110.3	142.9	172.4	144.7	100.0	161.1	0.0	167.9	159.5	February "
መጋቢት 2009	148.4	153.1	140.6	121.6	177.0	116.6	141.1	205.7	144.7	100.0	150.0	0.0	175.7	157.9	February "
ጊዮሀያ 2009	152.2	158.7	141.3	129.6	171.9	114.5	146.7	170.5	145.0	115.0	166.1	0.0	175.7	155.1	April "

ሠንጠረዥ 9ሀ፣ ጠቅላላ የሽግግር ዋጋ መመዘኛ ኢንዱስትሪ ቢሥሩ የተካተቱ ክፍሎች ስራሪሪ ክልላዊ መገንባት

ታህሳስ 2004 =100

Table 9a: General Consumer Price Index and Its Components for Harari Regional State

December 2011 = 100

ወርና ዓመት	ጠቅላላ ኢንዱስትሪ	ምግብና አልኮሎል ያልሆኑ መጠጦች	ምግብ ነክ ያልሆኑ ኢንዱስትሪ	ምግብ ነክ ያልሆኑ የኢንዱስትሪ ክፍሎች											Non-food Consumer Price Index Components	Month an Year
				መጠጥ ሲጃራና ትምባሆ	ላብስና መጫጫያ	የቤት ኪራይ፣ የቤት መሥሪያ ስቃዎች+ውሃ፣ ነዳጅናሃይል	የቤት ስቃዎች የቤት ግብአቶች የቤት ቁሳቁስና የቤት ሠራተኛ ደመወዝ	ሕክምና	ትራንስፖርት	መገናኛ	መዝናኛና ባህል	ትምህርት	ሬስቶራንትና ሆቴሎች	ሌሎች ስቃዎች አገገሎቶች		
Month an Year	General Index	Food and Non-Alcoholic Beverages	Non-Food Index	Alcoholic Beverages and Tobacco	Clothing and Footwear	Housing, Water, Electricity, Gas and Other Fuels	Furnishings, Household Equipment and Routine Maintenance of the House	Health	Transport	Communication	Recreation and Culture	Education	Restaurants and Hotels	Misellaneous Goods and services	Month an Year	
ታህሳስ 2004	100.0	100.0	100.0	100.0	100.0	100.0	100.0	100.0	100.0	100.0	100.0	100.0	100.0	100.0	December 2011	
ሐምሌ 2004 - ሰኔ 2005	111.0	119.0	103.6	97.7	117.6	100.0	112.9	120.3	108.6	100.0	99.7	100.0	120.2	112.2	July 2012 - June 2013	
ሐምሌ 2005 - ሰኔ 2006	122.8	131.5	114.8	112.1	131.5	109.7	127.6	105.0	107.3	100.0	116.4	100.0	135.4	121.0	July 2013 - June 2014	
ሐምሌ 2006 - ሰኔ 2007	132.6	145.6	120.7	122.1	140.6	111.8	135.5	91.4	107.1	100.0	114.1	100.0	143.8	127.6	July 2014 - June 2015	
ሐምሌ 2007 - ሰኔ 2008	147.1	156.5	138.5	172.2	150.3	104.4	153.5	107.1	107.1	100.0	151.5	100.0	152.7	140.5	July 2015 - June 2016	
2008															2015/2016	
ጥር 2008	162.6	157.6	167.2	253.2	144.8	107.6	153.9	125.3	107.1	100.0	181.0	100.0	149.4	166.5	January 2016	
የካቲት 2008	162.4	155.5	168.8	266.2	152.9	99.9	157.4	114.7	107.1	100.0	187.4	100.0	148.5	137.7	February "	
መጋቢት 2008	167.4	154.1	179.6	295.7	156.3	99.9	158.1	140.2	107.1	100.0	187.4	100.0	153.5	140.0	March "	
ጊዳር 2008	148.2	158.7	138.7	174.8	150.9	99.9	159.1	105.4	107.1	100.0	187.4	100.0	150.8	143.6	April "	
ግንቦት 2008	145.2	165.4	126.7	138.1	152.9	99.9	160.6	105.4	107.1	100.0	189.5	100.0	153.1	137.3	May "	
ሰኔ 2008	154.9	166.5	144.2	190.0	155.7	99.9	157.6	105.4	107.1	100.0	189.5	100.0	154.5	142.1	June "	
2009															2016/2017	
ሐምሌ 2008	150.6	167.2	135.4	160.6	161.3	99.9	158.7	147.6	107.1	100.0	189.4	100.0	152.4	141.1	July 2016	
ኦገስት 2008	149.9	169.8	131.7	150.4	162.7	99.8	155.9	105.4	107.1	100.0	188.1	100.0	158.5	140.2	August "	
መስከረም 2009	155.8	178.5	134.9	160.3	158.5	99.8	158.2	115.5	107.1	100.0	189.4	100.0	159.2	141.9	September "	
ጥቅምት 2009	146.0	169.6	124.4	128.9	157.2	99.6	159.9	119.0	107.1	100.0	189.4	100.0	155.5	143.8	October "	
ህዳር 2009	153.0	169.9	137.4	164.3	179.0	99.8	157.2	105.4	107.1	100.0	186.7	100.0	148.9	143.1	November "	
ታህሳስ 2009	155.5	168.0	144.0	186.2	162.4	99.8	161.6	105.4	107.1	100.0	189.5	100.0	157.9	142.3	December "	
ጥር 2009	157.4	160.7	154.3	212.4	165.4	105.4	161.1	119.0	107.1	100.0	188.2	100.0	147.8	142.3	January 2017	
የካቲት 2009	163.7	163.5	163.9	238.6	156.6	110.0	161.0	107.1	107.1	100.0	190.9	100.0	152.7	144.6	February "	
መጋቢት 2009	169.3	173.2	165.8	230.1	159.5	117.9	162.9	105.4	107.1	100.0	190.9	100.0	186.5	145.0	February "	
ጊዳር 2009	162.7	173.6	152.8	193.2	167.2	117.9	170.8	80.7	88.9	115.0	208.1	100.0	152.7	141.1	April "	

ሠንጠረዥ 10ሀ፣ ጠቅላላ የሽግግር ዋጋ መመዘኛ ኢንዱክሽን ቢሥሩ የተካተቱ ክፍሎች ለአርጌያ ክልላዊ መንግስት
 ታህሳስ 2004 =100

Table 10a: General Consumer Price Index and Its Components for Oromia Regional State
 December 2011 = 100

ወርና ዓመት	ጠቅላላ ኢንዱክሽን	ምግብና አልኮሎል ያልሆኑ መጠባባቾች	ምግብ ነክ ያልሆኑ ኢንዱክሽን	Non-food Consumer Price Index Components											Month an Year
				መጠጥ ሲጃራና ትምባህ	ልብና መጫሊያ	የቤት ኪራይ፣ የቤት መሥሪያ ስቃዎች+ውሃ፣ ነጻጅናሃይል	የቤት ስቃዎች የቤት ግብአቶች የቤት ቁሳቁስና የቤት ሠራተኛ ደመወዝ	ሕክምና	ትራንስፖርት	መገናኛ	መዝናኛና ባህል	ትምህርት	ሬስቶራንትና ሆቴሎች	ሌሎች ስቃዎች አገገሎቶች	
Month an Year	General Index	Food and Non-Alcoholic Beverages	Non-Food Index	Alcoholic Beverages and Tobacco	Clothing and Footwear	Housing, Water, Electricity, Gas and Other Fuels	Furnishings, Household Equipment and Routine Maintenance of the House	Health	Transport	Communication	Recreation and Culture	Education	Restaurants and Hotels	Misellaneous Goods and services	Month an Year
ታህሳስ 2004	100.0	100.0	100.0	100.0	100.0	100.0	100.0	100.0	100.0	100.0	100.0	100.0	100.0	100.0	December 2011
ሐምሌ 2004 - ሰኔ 2005	114.4	115.6	113.1	102.3	113.9	117.1	115.9	115.9	97.3	100.0	103.9	100.0	122.5	112.5	July 2012 - June 2013
ሐምሌ 2005 - ሰኔ 2006	123.4	123.3	123.5	114.9	129.3	127.8	126.1	132.4	95.0	100.0	109.9	100.0	134.0	117.9	July 2013 - June 2014
ሐምሌ 2006 - ሰኔ 2007	138.1	139.5	136.6	139.5	144.3	144.5	136.8	140.5	95.3	100.0	101.7	100.0	142.4	121.9	July 2014 - June 2015
ሐምሌ 2007 - ሰኔ 2008	153.1	158.1	147.5	146.0	154.5	158.2	148.1	158.8	93.3	100.0	133.4	100.0	158.5	128.1	July 2015 - June 2016
2008															2015/2016
ጥር 2008	150.2	153.4	146.6	152.1	154.0	152.0	149.6	162.5	94.6	100.0	132.5	100.0	160.3	128.7	January 2016
የካቲት 2008	151.0	152.9	148.9	152.3	153.7	158.3	151.9	159.7	94.0	100.0	137.4	100.0	159.9	129.4	February "
መጋቢት 2008	153.7	155.7	151.5	161.0	159.2	160.8	152.5	157.4	93.8	100.0	139.7	100.0	160.1	128.2	March "
ግዳሴ 2008	154.6	156.4	152.5	154.2	155.9	165.2	152.6	163.7	94.3	100.0	142.3	100.0	164.7	129.9	April "
ግንቦት 2008	153.6	156.9	149.8	128.2	157.4	166.9	151.1	172.1	85.3	100.0	141.2	100.0	162.2	132.4	May "
ሰኔ 2008	155.3	158.4	151.7	129.8	157.6	169.4	152.6	165.2	94.2	100.0	141.4	100.0	167.1	130.7	June "
2009															2016/2017
ሐምሌ 2008	155.9	159.9	151.3	137.3	156.1	166.5	153.0	159.0	93.9	100.0	139.4	100.0	167.9	132.7	July 2016
ኔሐሴ 2008	155.1	159.0	150.7	122.7	153.4	170.7	153.0	159.3	93.7	100.0	142.7	100.0	167.1	132.7	August "
መስከረም 2009	158.1	163.0	152.6	127.4	157.8	171.0	153.3	165.2	94.2	100.0	145.6	100.0	171.3	132.0	September "
ጥቅምት 2009	155.7	159.1	151.9	136.5	155.6	166.5	153.3	168.8	94.6	100.0	149.9	100.0	171.6	130.8	October "
ህዳር 2009	155.1	155.6	154.5	147.1	159.0	170.0	152.7	166.9	94.1	100.0	147.6	100.0	169.6	131.9	November "
ታህሳስ 2009	153.5	153.2	153.8	151.1	157.3	165.3	153.4	170.2	95.0	100.0	148.4	100.0	174.6	132.5	December "
ጥር 2009	156.9	156.0	158.0	164.5	158.1	173.8	151.1	171.9	95.1	100.0	147.3	100.0	172.9	134.7	January 2017
የካቲት 2009	156.3	153.7	159.3	154.1	161.3	177.0	154.8	180.7	95.6	100.0	150.0	100.0	173.4	135.8	February "
መጋቢት 2009	159.2	157.1	161.7	152.4	165.0	182.1	155.3	176.4	96.2	100.0	148.4	100.0	176.9	136.7	February "
ግዳሴ 2009	163.1	165.5	160.2	146.8	159.5	180.6	159.8	170.1	95.2	104.3	151.2	100.0	176.7	139.2	April "

ሠንጠረዥ 11ሀ፣ ጠቅላላ የሽግግር ዋጋ መመዘኛ ኢንዱክሽን ቢሥሩ የተካተቱ ክፍሎች ለደቡብ ህዝቦች ክልላዊ መገንጠት ታህሳስ 2004 =100

Table 11a: General Consumer Price Index and Its Components for SNNP Regional State
December 2011 = 100

ወርና ዓመት	ጠቅላላ ኢንዱክሽን	ምግብና አልኮሎል ያልሆኑ መጠባባሾች	ምግብ ነጻ ያልሆኑ ኢንዱክሽን	Non-food Consumer Price Index Components											Month an Year
				መጠጥ ሲጃራና ትምባህ	ልብና መጫጫያ	የቤት ኪራይ፣ የቤት መሥሪያ ስቃዎች+ውሃ፣ ነዳጅናሃይል	የቤት ስቃዎች የቤት ግብአትና የቤት ቁሳቁስና የቤት ሠራተኛ ደመወዝ	ሕክምና	ትራንስፖርት	መገናኛ	መዝናኛና ባህል	ትምህርት	ሬስቶራንትና ሆቴሎች	ሌሎች ስቃዎች አገገሎቶች	
Month an Year	General Index	Food and Non-Alcoholic Beverages	Non-Food Index	Alcoholic Beverages and Tobacco	Clothing and Footwear	Housing, Water, Electricity, Gas and Other Fuels	Furnishings, Household Equipment and Routine Maintenance of the House	Health	Transport	Communication	Recreation and Culture	Education	Restaurants and Hotels	Misellaneous Goods and services	Month an Year
ታህሳስ 2004	100.0	100.0	100.0	100.0	100.0	100.0	100.0	100.0	100.0	100.0	100.0	100.0	100.0	100.0	December 2011
ሐምሌ 2004 - ሰኔ 2005	120.6	123.2	118.6	117.0	121.3	121.4	114.8	145.2	102.4	100.2	119.2	100.2	119.3	107.7	July 2012 - June 2013
ሐምሌ 2005 - ሰኔ 2006	132.2	131.8	132.5	128.6	135.0	139.9	123.7	161.3	108.1	100.0	126.3	101.0	129.8	114.9	July 2013 - June 2014
ሐምሌ 2006 - ሰኔ 2007	137.7	139.1	136.7	140.4	146.5	139.2	131.5	176.2	101.4	100.1	137.1	101.0	136.0	118.3	July 2014 - June 2015
ሐምሌ 2007 - ሰኔ 2008	146.5	152.1	142.4	149.5	153.0	142.5	140.3	189.4	102.0	98.6	148.5	101.0	149.7	121.7	July 2015 - June 2016
2008															2015/2016
ጥር 2008	148.5	152.9	145.2	152.2	155.6	146.9	141.4	190.3	100.8	100.0	147.8	101.0	149.7	122.6	January 2016
የካቲት 2008	144.5	148.1	141.7	149.7	153.9	140.6	141.4	186.7	102.7	89.9	148.6	101.0	149.4	123.5	February "
መጋቢት 2008	146.2	151.5	142.3	151.0	154.8	140.6	142.0	195.6	103.5	88.2	148.5	101.0	151.1	121.9	March "
ጊዳር 2008	149.3	153.8	146.0	151.5	154.0	148.1	143.4	191.7	102.8	100.0	149.1	101.0	153.6	122.4	April "
ግንቦት 2008	152.4	158.3	148.0	153.7	155.5	151.4	144.4	197.3	103.1	100.0	151.5	101.0	150.4	122.2	May "
ሰኔ 2008	154.9	163.8	148.3	154.1	154.6	150.1	144.4	211.5	109.2	100.0	148.1	101.0	157.3	123.5	June "
2009															2016/2017
ሐምሌ 2008	153.7	158.7	150.1	149.3	156.7	157.0	144.1	199.4	98.3	88.2	151.4	101.0	157.4	122.1	July 2016
ኦገስት 2008	155.3	160.4	151.5	160.1	156.5	156.5	143.8	200.2	104.2	88.2	150.2	101.0	157.9	124.4	August "
መስከረም 2009	153.8	163.4	146.7	159.7	158.4	145.1	143.8	193.8	108.7	89.0	155.2	101.0	157.3	123.8	September "
ጥቅምት 2009	154.9	161.5	150.1	161.7	157.1	151.1	146.7	200.8	110.5	89.0	157.5	101.0	159.2	123.7	October "
ህዳር 2009	151.9	161.5	144.7	156.3	156.3	140.5	147.1	203.2	110.5	89.0	153.8	101.0	158.6	123.5	November "
ታህሳስ 2009	155.4	164.8	148.5	161.0	162.9	144.3	144.3	213.8	121.6	89.0	155.3	101.0	163.4	124.8	December "
ጥር 2009	154.8	164.6	147.4	167.2	160.6	139.6	149.0	208.9	124.1	89.0	155.0	101.0	163.1	126.2	January 2017
የካቲት 2009	159.8	174.4	148.9	168.6	162.3	141.2	147.6	209.6	130.0	102.7	154.1	101.0	163.8	126.9	February "
መጋቢት 2009	163.3	178.4	152.1	177.5	164.9	141.9	151.4	222.0	143.7	102.7	156.8	101.0	168.3	126.3	February "
ጊዳር 2009	167.9	192.1	150.0	148.8	163.4	142.5	165.6	227.0	129.7	102.7	163.7	101.0	168.3	126.9	April "

ሠንጠረዥ 12ሀ፣ ጠቅላላ የሽግግር ዋጋ መመዘኛ ኢንዱስትሪ ቢሥሩ የተካተቱ ክፍሎች ለሱማሌ ክልላዊ መንግስት
 ታህሳስ 2004 =100

Table 12a: General Consumer Price Index and Its Components for Somali Regional State
 December 2011 = 100

ወርና ዓመት	ጠቅላላ ኢንዱስትሪ	ምግብና አልኮሎል ያልሆኑ መጠጠኞች	ምግብ ነክ ያልሆኑ ኢንዱስትሪ	ምግብ ነክ ያልሆኑ የኢንዱስትሪ ክፍሎች											ወርና ዓመት
				መጠጠጥ ሲጃራና ትምባሆ	ልብና መጫጫያ	የቤት ኪራይ፣ የቤት መሥሪያ ስቃዎች+ውሃ፣ ነዳጅናሃይል	የቤት ስቃዎች የቤት ግብአቶች የቤት ቁሳቁስና የቤት ሠራተኛ ደመወዝ	ሕክምና	ትራንስፖርት	መገናኛ	መዝናኛና ባህል	ትምህርት	ሬስቶራንትና ሆቴሎች	ሌሎች ስቃዎች አገገሎቶች	
Month an Year	General Index	Food and Non-Alcoholic Beverages	Non-Food Index	Alcoholic Beverages and Tobacco	Clothing and Footwear	Housing, Water, Electricity, Gas and Other Fuels	Furnishings, Household Equipment and Routine Maintenance of the House	Health	Transport	Communication	Recreation and Culture	Education	Restaurants and Hotels	Misellaneous Goods and services	Month an Year
ታህሳስ 2004	100.0	100.0	100.0	100.0	100.0	100.0	100.0	100.0	100.0	100.0	100.0	100.0	100.0	100.0	December 2011
ሐምሌ 2004 - ሰኔ 2005	116.5	115.5	117.7	100.2	121.5	129.0	126.2	121.0	108.5	100.0	134.6	100.0	112.4	121.5	July 2012 - June 2013
ሐምሌ 2005 - ሰኔ 2006	129.4	123.0	137.5	138.5	123.3	152.6	131.4	140.2	122.8	100.0	148.0	100.0	123.1	135.4	July 2013 - June 2014
ሐምሌ 2007 - ሰኔ 2008	152.8	137.3	172.2	208.2	144.1	190.7	134.1	186.0	124.6	100.0	164.6	100.0	134.2	156.0	July 2015 - June 2016
2008															2015/2016
ጥር 2008	151.0	137.7	167.7	212.8	146.9	171.8	132.7	179.4	126.0	100.0	164.0	100.0	135.1	157.6	January 2016
የካቲት 2008	159.8	140.4	184.4	259.8	143.8	190.0	131.3	174.8	126.0	100.0	164.0	100.0	134.3	153.2	February "
መጋቢት 2008	154.5	141.2	171.1	212.9	146.1	183.1	132.1	191.1	126.0	100.0	160.1	100.0	133.9	157.2	March "
ጊያዝያ 2008	153.3	139.9	170.2	208.3	147.4	179.6	140.2	182.0	126.0	100.0	160.1	100.0	137.0	158.0	April "
ግንቦት 2008	157.0	141.7	176.3	225.9	147.9	185.0	139.5	184.5	126.0	100.0	160.1	100.0	136.7	159.8	May "
ሰኔ 2008	152.4	136.5	172.4	201.0	151.0	189.5	140.2	190.0	126.0	100.0	194.7	100.0	135.7	164.6	June "
2009															2016/2017
ሐምሌ 2008	153.5	139.8	170.6	197.0	149.9	191.3	136.2	201.4	126.0	100.0	164.0	100.0	136.5	146.3	July 2016
ኦገስት 2008	157.2	141.6	176.7	183.3	153.1	217.4	138.7	171.7	126.0	100.0	160.1	100.0	143.1	157.4	August "
መስከረም 2009	156.1	145.5	169.4	174.5	150.0	203.1	138.6	181.7	126.0	100.0	160.1	100.0	140.3	157.6	September "
ጥቅምት 2009	157.2	146.0	171.3	184.1	151.8	199.9	139.0	174.0	126.0	100.0	196.6	100.0	143.2	156.8	October "
ህዳር 2009	163.3	150.9	179.0	197.9	147.2	211.9	145.7	178.1	126.0	100.0	196.6	100.0	144.2	162.8	November "
ታህሳስ 2009	168.5	149.6	192.3	208.8	147.6	247.5	139.4	172.1	126.0	100.0	196.6	100.0	147.9	160.7	December "
ጥር 2009	172.2	152.4	197.1	209.2	145.9	261.8	141.0	176.6	126.0	100.0	201.3	100.0	147.9	162.5	January 2017
የካቲት 2009	179.1	156.3	207.7	237.9	147.4	272.4	140.4	174.1	126.0	100.0	196.6	100.0	148.4	161.1	February "
መጋቢት 2009	183.0	161.2	210.4	241.8	147.7	277.5	140.8	173.9	126.0	100.0	196.6	100.0	148.1	161.7	February "
ጊያዝያ 2009	183.1	162.6	209.0	232.0	150.8	280.9	138.2	146.7	126.0	100.0	259.3	100.0	147.9	157.9	April "

ሠንጠረዥ 13ሀ፣ ጠቅላላ የሽግግር ዋጋ መመዘኛ ኢንዱክሽን ቢሥሩ የተካተቱ ክፍሎች ስትግራይ ክልላዊ መገንባት ታህሳስ 2004 =100

Table 13a: General Consumer Price Index and Its Components for Tigray Regional State
December 2011 = 100

ወርና ዓመት	ጠቅላላ ኢንዱክሽን	ምግብና አልኮል ያልሆኑ መጠባባቾች	ምግብ ነክ ያልሆኑ ኢንዱክሽን	Non-food Consumer Price Index Components											ወርና ዓመት
				መጠጥ ሲጃራና ትምባህ	ላብስና መጫጫያ	የቤት ኪራይ፣ የቤት መሥሪያ ስቃዎች+ውሃ፣ ነዳጅናሃይል	የቤት ስቃዎች የቤት ግንባራዎች የቤት ቁሳቁስና የቤት ሠራተኛ ደመወዝ	ሕክምና	ትራንስፖርት	መገናኛ	መዝናኛና ባህል	ትምህርት	ሬስቶራንትና ሆቴሎች	ሌሎች ስቃዎች አገገሎቶች	
Month an Year	General Index	Food and Non-Alcoholic Beverages	Non-Food Index	Alcoholic Beverages and Tobacco	Clothing and Footwear	Housing, Water, Electricity, Gas and Other Fuels	Furnishings, Household Equipment and Routine Maintenance of the House	Health	Transport	Communication	Recreation and Culture	Education	Restaurants and Hotels	Misellaneous Goods and services	Month an Year
ታህሳስ 2004	100.0	100.0	100.0	100.0	100.0	100.0	100.0	100.0	100.0	100.0	100.0	100.0	100.0	100.0	December 2011
ሐምሌ 2004 - ሰኔ 2005	120.8	121.3	120.3	110.1	124.2	124.1	116.1	111.5	102.2	100.0	134.4	100.0	134.0	112.0	July 2012 - June 2013
ሐምሌ 2005 - ሰኔ 2006	131.1	130.2	131.9	123.3	142.1	136.2	130.7	120.1	103.3	100.0	147.0	100.8	145.4	117.7	July 2013 - June 2014
ሐምሌ 2006 - ሰኔ 2007	137.6	129.5	145.6	137.5	152.7	166.5	136.0	137.0	108.9	100.0	150.2	108.4	147.5	123.2	July 2014 - June 2015
ሐምሌ 2007 - ሰኔ 2008	154.2	145.6	162.6	138.4	164.2	210.9	143.8	142.7	106.1	104.9	163.7	114.8	150.8	127.2	July 2015 - June 2016
2008															2015/2016
ጥር 2008	155.2	148.2	162.2	139.7	167.8	207.5	144.3	140.3	106.9	107.5	163.5	115.3	151.7	123.6	January 2016
የካቲት 2008	157.1	145.2	168.8	153.6	161.6	230.3	143.4	129.3	105.3	105.9	176.9	115.3	151.5	125.7	February "
መጋቢት 2008	156.5	145.9	167.0	138.7	164.1	222.6	151.9	144.8	104.9	105.9	165.4	115.9	150.4	126.7	March "
ጊዳር 2008	162.4	146.1	178.5	136.7	167.4	262.4	143.2	145.2	107.6	105.9	164.7	116.6	153.0	127.8	April "
ግንቦት 2008	165.6	149.1	181.7	140.5	167.7	269.6	146.2	149.6	104.6	105.6	163.7	117.2	157.3	127.5	May "
ሰኔ 2008	167.5	155.1	179.7	140.2	166.9	266.3	147.7	179.9	104.9	105.6	171.8	117.8	142.8	131.0	June "
2009															2016/2017
ሐምሌ 2008	169.9	154.6	184.9	142.3	171.4	280.8	151.3	149.3	106.2	105.9	168.0	118.4	143.5	130.2	July 2016
ኔሐሴ 2008	166.3	158.8	173.7	139.7	173.2	245.9	146.6	158.1	104.5	105.0	166.0	118.4	144.1	124.6	August "
መስከረም 2009	173.4	166.3	180.4	139.6	172.6	262.5	146.1	157.2	103.3	105.6	175.0	118.4	155.0	129.7	September "
ጥቅምት 2009	173.1	159.6	186.4	139.5	170.6	288.9	146.4	147.9	103.3	105.9	185.0	119.0	144.8	127.9	October "
ህዳር 2009	175.9	159.2	192.3	136.8	175.9	298.1	159.9	174.2	104.2	105.6	196.6	119.0	143.9	130.5	November "
ታህሳስ 2009	174.2	151.8	196.2	140.4	175.0	294.4	179.2	157.7	104.3	105.6	219.4	119.0	159.2	131.3	December "
ጥር 2009	172.2	149.9	194.1	153.3	169.1	301.9	161.6	140.3	106.1	107.5	215.1	119.6	147.8	129.1	January 2017
የካቲት 2009	167.9	154.3	181.2	140.5	172.0	254.8	169.3	150.6	107.4	104.9	211.5	119.6	144.8	134.7	February "
መጋቢት 2009	164.5	157.4	171.5	136.0	171.0	218.8	168.9	181.2	109.3	105.9	216.3	119.6	151.4	132.1	February "
ጊዳር 2009	164.2	162.5	165.9	97.7	158.1	213.3	175.6	112.3	109.7	162.8	190.2	119.6	147.0	136.6	April "

ሠንጠረዥ 1ለ፣ ጠቅላላ የምግብና የምግብ ክፍሎች የሽያጭ ዋጋ መመዘኛ ኢንዱስትሪ በአገር አቀፍ ደረጃ
 ታህሳስ 2004 =100

Table 1b: General Food Consumer Price Index and Its Components at Country Level
 December 2011 = 100

ወርና ዓመት	የምግብ ክፍሎች Food Consumer Price Index Components										Month an Year
	ምግብና ያልሆኑ መጠጦች	ጸባና እህል	ሥጋ	ወተት ዓይብና ዕንቁላል	ዘይትና ቅባቶች	ፍራፍሬ	አትክልትና ጥራጥሬ	ሰኋር ግርና ፕክሌት	ሌሎች ምግቦች	አልኮሎል ያልሆኑ ቤቨጅ	
Month an Year	Food and Non- Alcoholic Beverages	Bread and Cereals	Meat (ND)	Milk, cheese and eggs (ND)	Oils and fats (ND)	Fruit (ND)	Vegetables	Sugar, jam, honey, chocolate.	Food products n.e.c. (ND)	Non-Alcoholic Beverages and coffee	Month an Year
ታህሳስ 2004	100.0	100.0	100.0	100.0	100.0	100.0	100.0	100.0	100.0	100.0	December 2006
ሐምሌ 2004 - ሰኔ 2005	117.6	119.4	141.0	127.8	107.7	125.5	121.4	108.9	117.0	83.0	July 2012 - June 2013
ሐምሌ 2005 - ሰኔ 2006	124.5	127.5	154.7	140.8	110.9	124.5	128.0	112.8	122.3	83.0	July 2013 - June 2014
ሐምሌ 2006 - ሰኔ 2007	133.8	126.1	164.6	159.8	132.4	137.1	139.8	114.9	147.7	97.0	July 2014 - June 2015
ሐምሌ 2007 - ሰኔ 2008	148.7	134.8	184.0	185.9	142.0	158.6	159.9	121.7	196.1	84.5	July 2015 - June 2016
2008											2015/2016
ጥር 2008	146.6	136.1	185.3	186.3	141.2	164.8	156.2	116.4	180.2	81.8	January 2016
የካቲት 2008	144.6	134.6	183.1	191.6	136.9	166.8	154.3	125.7	171.2	80.9	February "
መጋቢት 2008	146.2	134.3	182.1	191.9	134.7	163.9	161.2	132.0	171.5	80.6	March "
ጊኦርጊያ 2008	148.0	136.3	184.5	189.7	139.1	162.6	162.2	125.0	176.3	83.0	April "
ግንቦት 2008	151.9	138.4	193.6	204.8	144.7	159.1	167.3	128.4	175.3	84.1	May "
ሰኔ 2008	153.8	140.6	193.8	194.2	142.3	160.4	173.8	131.0	174.3	85.3	June "
2009											2016/2017
ሐምሌ 2008	153.8	142.0	196.1	191.6	141.2	165.9	171.7	132.4	171.7	87.6	July 2016
ነሐሴ 2008	156.0	144.7	195.7	194.4	140.7	164.1	173.4	131.9	176.2	92.2	August "
መስከረም 2009	161.5	148.5	205.6	199.2	145.2	165.4	177.1	132.7	192.6	97.1	September "
ጥቅምት 2009	157.8	148.4	200.4	196.0	141.8	166.1	164.8	137.5	193.8	98.3	October "
ህዳር 2009	154.5	144.9	198.5	200.9	140.0	166.2	160.9	142.9	179.7	99.7	November "
ታህሳስ 2009	153.2	141.0	197.7	196.1	142.4	167.3	163.0	152.7	172.2	100.0	December "
ጥር 2009	153.9	141.2	202.7	201.6	146.6	166.1	160.9	152.7	176.9	98.2	January 2017
የካቲት 2009	155.9	139.6	200.6	205.7	147.0	173.0	170.3	140.9	180.6	98.2	February "
መጋቢት 2009	160.2	143.9	199.6	203.5	148.6	179.8	179.4	141.1	186.6	98.1	March "
ጊኦርጊያ 2009	166.2	153.0	215.4	210.3	157.2	177.2	179.8	142.8	194.4	95.8	April "
	12.2	12.3	16.8	10.9	13.0	8.9	10.8	14.2	10.3	15.4	

ሠንጠረዥ 3ለ፣ ጠቅላላ የምግብ የሽግግር ዋጋ መመዘኛ ኢንዱክስ በሥሩ የተካተቱ ክፍሎች ለአዲስ አበባ ከተማ አስተዳደር

ታህሳስ 2004 = 100

Table 3b: General Food Consumer Price Index and Its Components for Addis Ababa City Administration

December 2011 = 100

ወርና ዓመት	የምግብ ክፍሎች Food Consumer Price Index Components										
	ምግብና አልኮሎል ያልሆኑ መጠቦች	ዳቦና እህል	ሥጋ	ወተት ዓይብና ዕንቁላል	ዘይትና ትባቶች	ፍራፍሬ	አትክልትና ጥራጥሬ	ስኳር ግርና ቸካሌት	ሌሎች ምግቦች	አልኮሎል ያልሆኑ መጠቦች	Month an Year
Month an Year	Food and Non-Alcoholic Beverages	Bread and Cereals	Meat (ND)	Milk, cheese and eggs (ND)	Oils and fats (ND)	Fruit (ND)	Vegetables	Sugar, jam, honey, chocolate.	Food products n.e.c. (ND)	Non-Alcoholic Beverages and Coffee	Month an Year
ታህሳስ 2004	100.0	100.0	100.0	100.0	100.0	100.0	100.0	100.0	100.0	100.0	December 2006
ሐምሌ 2004 - ሰኔ 2005	119.3	128.1	133.8	127.0	108.7	130.1	119.9	100.1	97.2	89.8	July 2012 - June 2013
ሐምሌ 2005 - ሰኔ 2006	124.9	131.3	144.1	135.5	112.6	141.4	127.5	102.0	102.1	90.6	July 2013 - June 2014
ሐምሌ 2006 - ሰኔ 2007	140.1	132.6	151.6	152.5	135.2	156.9	147.6	106.4	170.1	103.4	July 2014 - June 2015
ሐምሌ 2007 - ሰኔ 2008	163.4	143.2	179.1	179.8	144.4	181.0	181.5	116.4	257.5	97.2	July 2015 - June 2016
2008											2015/2016
ጥር 2008	157.7	147.0	179.9	182.0	141.7	184.2	174.8	108.5	191.8	94.8	January 2016
የካቲት 2008	151.6	138.7	180.7	179.7	135.7	189.7	165.0	126.8	174.0	94.4	February "
መጋቢት 2008	155.1	147.6	174.0	178.0	133.4	200.0	175.7	128.7	169.4	96.6	March "
ጊያዝያ 2008	157.4	148.3	179.1	175.2	134.6	201.1	183.1	128.8	164.8	98.5	April "
ግንቦት 2008	164.5	151.4	187.1	186.6	143.6	193.1	199.9	128.5	165.3	98.4	May "
ሰኔ 2008	164.9	155.1	183.1	183.7	141.5	180.1	202.4	129.0	163.0	98.1	June "
2009											2016/2017
ሐምሌ 2008	170.1	156.6	183.9	185.5	140.1	182.2	223.8	129.1	164.2	101.2	July 2016
ክሐሴ 2008	169.4	159.0	188.4	184.9	141.0	178.6	213.6	123.3	163.4	102.8	August "
መስከረም 2009	174.4	165.1	191.8	187.3	143.9	161.0	223.8	122.5	165.5	105.9	September "
ጥቅምት 2009	168.1	170.7	191.5	185.0	142.5	161.3	186.8	122.3	162.0	106.6	October "
ህዳር 2009	161.6	165.4	185.2	189.7	141.1	159.4	178.2	122.3	134.8	106.6	November "
ታህሳስ 2009	160.6	162.5	186.1	188.0	137.5	168.3	180.2	129.0	125.8	111.0	December "
ጥር 2009	159.0	160.6	183.4	194.0	141.1	176.5	174.8	129.0	125.0	108.2	January 2017
የካቲት 2009	157.3	157.6	183.4	192.1	141.0	193.7	175.0	129.3	113.0	107.7	February "
መጋቢት 2009	165.8	161.1	178.3	190.9	142.2	213.2	213.0	129.2	114.4	108.2	March "
ጊያዝያ 2009	165.0	161.5	194.0	187.7	138.8	205.8	203.7	127.8	109.4	102.8	April "

ሠንጠረዥ 4ብ፣ ጠቅላላ የምግብ የሽግግር ዋጋ መመዘኛ ኢንዱክስ በሥሩ የተካተቱ ክፍሎች ለአፋር ክልል የምግብ መግቢያ
 ታህሳስ 2004 =100

Table 4b: Consumer Price Index of Total Food and Its Components for Afar Regional State
 December 2011 = 100

ወርና ዓመት	የምግብ ክፍሎች Food Consumer Price Index Components										ወርና ዓመት
	ምግብና አልኮሎል ያልሆኑ መጠጦች	ጸብና አህል	ሥጋ	ወተት ዓይብና ዕንቁላል	ዘይትና ቅባቶች	ፍራፍሬ	አትክልትና ጥራጥሬ	ስኬር ግርና ቸካሌት	ሌሎች ምግቦች	አልኮሎል ያልሆኑ መጠጦች	
Month an Year	Food and Non-Alcoholic	Bread and Cereals	Meat (ND)	Milk, cheese and eggs (ND)	Oils and fats (ND)	Fruit (ND)	Vegetables	Sugar, jam, honey, chocolate	Food products n.e.c. (ND)	Non-Alcoholic Beverages and coffee	Month an Year
ታህሳስ 2004	100.0	100.0	100.0	100.0	100.0	100.0	100.0	100.0	100.0	100.0	December 2006
ሐምሌ 2004 - ሰኔ 2005	116.4	113.5	166.9	130.8	102.6	117.3	124.3	117.0	105.6	93.6	July 2012 - June 2013
ሐምሌ 2005 - ሰኔ 2006	124.7	123.6	188.5	143.1	106.6	135.3	132.9	120.1	106.7	91.4	July 2013 - June 2014
ሐምሌ 2006 - ሰኔ 2007	131.9	119.2	202.0	145.0	122.1	155.2	146.5	139.7	171.9	105.2	July 2014 - June 2015
ሐምሌ 2007 - ሰኔ 2008	150.4	127.3	216.0	165.0	136.1	179.6	196.8	118.7	273.2	101.0	July 2015 - June 2016
2008											2015/2016
ጥር 2008	147.3	128.2	213.4	165.2	127.7	180.7	200.5	118.1	217.5	101.1	January 2016
የካቲት 2008	146.6	132.6	205.9	168.1	125.3	188.8	179.7	118.7	201.5	100.9	February "
መጋቢት 2008	147.9	134.5	214.7	167.1	131.2	185.1	182.9	120.0	201.0	100.8	March "
ጊያዝያ 2008	154.4	126.2	211.2	208.7	132.7	180.1	193.2	122.4	200.8	101.4	April "
ግንቦት 2008	149.0	127.8	250.7	161.9	136.6	175.5	226.7	121.4	195.1	101.3	May "
ሰኔ 2008	147.6	129.0	252.6	168.2	126.2	190.2	222.4	118.7	159.1	99.2	June "
2009											2016/2017
ሐምሌ 2008	151.6	131.1	234.0	168.1	138.7	186.4	242.4	118.3	169.4	103.1	July 2016
ክሐሴ 2008	152.6	132.4	236.0	167.7	134.5	182.3	244.7	119.3	179.1	101.8	August "
መስከረም 2009	157.3	133.2	256.4	182.2	142.2	175.8	246.7	120.2	187.4	101.2	September "
ጥቅምት 2009	158.3	135.3	236.2	197.9	132.0	180.7	224.0	122.6	172.1	108.6	October "
ህዳር 2009	154.4	137.0	248.6	192.7	145.3	182.4	192.2	127.5	147.2	107.9	November "
ታህሳስ 2009	147.9	133.6	247.3	177.8	148.2	180.3	180.2	140.1	129.6	104.5	December "
ጥር 2009	149.3	129.2	242.3	183.2	152.6	191.5	191.7	145.4	131.1	109.4	January 2017
የካቲት 2009	147.9	129.8	236.2	187.8	152.0	180.1	176.4	139.1	126.2	105.4	February "
መጋቢት 2009	148.9	133.2	228.6	178.2	154.5	179.8	195.4	139.1	121.1	105.7	March "
ጊያዝያ 2009	147.9	135.2	250.7	168.6	159.3	185.6	183.1	142.2	128.3	107.2	April "

ሠንጠረዥ 5A1፡ ጠቅላላ የምግብ የሽያጭ ዋጋ መመዘኛ ኢንዱክስ በሥሩ የተከተቱ ክፍሎች ለአማራ ክልላዊ መንግስት
 ታህሳስ 2004 =100

Table 5b: Consumer Price Index of Total Food and Its Components for Amhara Regional State
 December 2011 = 100

ወርና ዓመት	የምግብ ክፍሎች										ወርና ዓመት
	Food Consumer Price Index Components										
	ምግብና አልኮሎል ያልሆኑ መጠባቂያ	ጸብና ለህል	ሥጋ	ወተት ዓይብና ዕንቁላል	ዘይትና ቅባቶች	ፍራፍሬ	አትክልትና ጥራጥሬ	ስኳር ግርና ቸክሊት	ሌሎች ምግቦች	አልኮሎል ያልሆኑ መጠባቂያ	
Month an Year	Food and Non-Alcoholic Beverages	Bread and Cereals	Meat (ND)	Milk, cheese and eggs (ND)	Oils and fats (ND)	Fruit (ND)	Vegetables	Sugar, jam, honey, chocolate.	Food products n.e.c. (ND)	Non-Alcoholic Beverages and Coffee	Month an Year
ታህሳስ 2004	100.0	100.0	100.0	100.0	100.0	100.0	100.0	100.0	100.0	100.0	December 2006
ሐምሌ 2004 - ሰኔ 2005	120.0	123.8	138.2	131.0	107.5	131.4	107.5	99.5	140.7	85.3	July 2012 - June 2013
ሐምሌ 2005 - ሰኔ 2006	125.6	130.6	146.5	146.7	110.9	150.1	108.1	99.8	152.9	84.5	July 2013 - June 2014
ሐምሌ 2006 - ሰኔ 2007	128.7	128.2	153.6	162.1	129.7	161.6	111.2	100.1	151.4	99.8	July 2014 - June 2015
ሐምሌ 2007 - ሰኔ 2008	141.4	137.9	169.5	181.1	146.4	191.1	133.0	110.4	160.9	91.5	July 2015 - June 2016
2008											2015/2016
ጥር 2008	141.9	140.4	170.8	179.8	139.2	196.2	132.2	100.5	162.6	92.4	January 2016
የካቲት 2008	141.2	139.4	169.5	187.1	141.7	199.3	131.6	124.7	160.5	88.1	February "
መጋቢት 2008	140.5	138.2	166.9	188.0	137.2	199.3	130.7	124.9	162.3	90.8	March "
ግንቦት 2008	142.5	138.3	171.6	181.8	141.7	197.6	132.2	125.1	168.0	89.7	April "
ግንቦት 2008	146.1	138.9	185.9	195.8	148.2	194.3	140.9	124.7	162.7	90.3	May "
ሰኔ 2008	144.9	139.9	179.8	193.0	144.9	190.1	140.4	123.5	161.3	87.4	June "
2009											2016/2017
ሐምሌ 2008	146.7	142.7	186.0	197.0	143.1	200.2	140.9	125.1	161.4	87.6	July 2016
ክሊሌ 2008	152.0	146.3	184.2	194.1	141.6	218.5	145.6	119.0	178.2	96.3	August "
መስከረም 2009	163.0	149.6	202.3	200.7	144.7	218.0	149.4	117.3	219.2	99.0	September "
ጥቅምት 2009	160.4	147.7	191.7	197.6	142.0	210.1	138.7	116.8	230.9	100.9	October "
ህዳር 2009	154.1	142.0	192.7	199.6	137.7	209.0	132.8	116.1	212.3	102.6	November "
ታህሳስ 2009	151.9	139.9	193.4	196.7	142.2	214.3	130.6	121.9	204.4	102.5	December "
ጥር 2009	154.5	141.0	199.1	207.9	142.8	215.6	131.3	125.2	211.1	104.4	January 2017
የካቲት 2009	154.8	140.1	192.9	206.8	144.4	215.3	131.0	124.9	218.9	104.0	February "
መጋቢት 2009	160.7	144.4	194.8	198.4	147.8	222.6	137.8	125.4	233.9	104.5	March "
ግንቦት 2009	155.0	151.4	225.1	222.9	146.4	231.4	87.9	125.0	242.5	102.2	April "

ሠንጠረዥ 6ቤ፣ ጠቅላላ የምግብ የሽያጭ ዋጋ መመዘኛ ኢንዱክስ በሥሩ የተካተቱ ክፍሎች ለበኒሻንጉል ጉሙዝ ክልላዊ መንግስት
 ታህሳስ 2004 =100

Table 6b: Consumer Price Index of Total Food and Its Components for Benishangul-Gumuz Regional State
 December 2011 = 100

ወርና ዓመት	የምግብ ክፍሎች Food Consumer Price Index Components										ወርና ዓመት
	ምግብና አልኮሎል ያልሆኑ መጠባባቾች	ዳቦና ለህል	ሥጋ	ወተት ዓይብና ዕንቁላል	ዘይትና ቅባቶች	ፍራፍሬ	አትክልትና ጥራጥሬ	ስኬር ግርና ቸካሌት	ሌሎች ምግቦች	አልኮሎል ያልሆኑ መጠባባቾች	
Month an Year	Food and Non-Alcoholic	Bread and Cereals	Meat (ND)	Milk, cheese and eggs (ND)	Oils and fats (ND)	Fruit (ND)	Vegetables	Sugar, jam, honey, chocolate	Food products n.e.c. (ND)	Non-Alcoholic Beverages and Coffees	Month an Year
ታህሳስ 2004	100.0	100.0	100.0	100.0	100.0	100.0	100.0	100.0	100.0	100.0	December 2006
ሐምሌ 2004 - ሰኔ 2005	107.5	102.8	134.7	126.9	112.2	174.6	101.4	108.5	128.9	75.4	July 2012 - June 2013
ሐምሌ 2005 - ሰኔ 2006	114.9	119.6	139.3	146.2	111.3	173.2	101.8	104.9	128.0	80.6	July 2013 - June 2014
ሐምሌ 2006 - ሰኔ 2007	114.0	100.0	145.4	137.1	113.7	169.0	115.3	100.5	147.9	88.4	July 2014 - June 2015
ሐምሌ 2007 - ሰኔ 2008	127.5	96.5	173.7	139.8	114.2	198.3	138.9	110.3	213.7	77.5	July 2015 - June 2016
2007											2014/2015
2008											2015/2016
ጥር 2008	127.2	99.0	177.0	130.7	111.9	232.4	134.9	104.0	210.3	77.1	January 2016
የካቲት 2008	124.3	97.0	170.4	132.5	114.5	202.8	136.0	113.3	192.9	76.2	February "
መጋቢት 2008	121.1	91.5	178.5	131.7	114.7	192.8	129.9	120.7	186.7	76.8	March "
ግድሃ 2008	122.8	87.8	173.9	147.0	116.0	199.7	132.9	120.7	211.6	75.6	April "
ግንቦት 2008	126.5	90.0	181.3	161.3	117.9	189.3	142.7	120.9	207.3	76.2	May "
ሰኔ 2008	128.3	93.9	186.7	156.1	117.5	212.5	145.3	120.0	198.8	77.8	June "
2009											2016/2017
ሐምሌ 2008	128.0	93.3	183.8	160.5	113.4	226.7	147.2	120.5	195.3	80.7	July 2016
ክለሌ 2008	131.7	98.2	191.8	158.9	113.7	247.0	151.7	115.8	190.1	87.1	August "
መስከረም 2009	134.5	100.4	186.9	159.6	117.4	210.8	156.9	115.9	200.8	88.2	September "
ጥቅምት 2009	132.9	103.3	182.5	165.2	114.8	221.7	137.7	114.5	213.8	96.2	October "
ህዳር 2009	131.2	105.6	182.6	157.8	115.9	219.1	127.8	111.3	212.6	95.5	November "
ታህሳስ 2009	131.2	103.4	182.1	155.4	114.5	239.8	133.8	111.3	208.1	95.6	December "
ጥር 2009	132.2	102.6	188.2	160.1	121.9	215.7	132.2	117.8	224.2	82.1	January 2017
የካቲት 2009	131.8	100.9	184.9	159.0	123.1	230.4	134.0	118.8	229.4	75.1	February "
መጋቢት 2009	134.0	102.7	175.8	173.8	128.9	238.9	139.7	120.9	229.3	80.8	March "
ግድሃ 2009	141.6	110.7	193.4	170.3	127.2	243.7	151.9	121.0	228.4	83.8	April "

ሠንጠረዥ ገለጻ፡ ጠቅላላ የምግብ የሽግግር ዋጋ መመዘኛ ኢንዱክስ በሥሩ የተካተቱ ክፍሎች ስድራላዋ ከተማ አስተዳደር
 ታህሳስ 2004 =100

Table7b: Consumer Price Index of Total Food and Its Components for Dire Dawa City Administration
 December 2011 = 100

ወርና ዓመት	የምግብ ክፍሎች Food Consumer Price Index Components										ወርና ዓመት
	ምግብና አልኮሎል ያልሆኑ መጠባባሪዎች	ባህርት እና ሌሎች	ሥጋ	ወተት ዓይብና ዕንቁላል	ዘይትና ቅባቶች	ፍራፍሬ	አትክልትና ጥራጥሬ	ስኬር ግርና ቸካሌት	ሌሎች ምግቦች	አልኮሎል ያልሆኑ መጠባባሪዎች	
Month an Year	Food and Non-Alcoholic	Bread and Cereals	Meat (ND)	Milk, cheese and eggs (ND)	Oils and fats (ND)	Fruit (ND)	Vegetables	Sugar, jam, honey, chocolate	Food products n.e.c. (ND)	Non-Alcoholic Beverages and Coffees	Month an Year
ታህሳስ 2004	100.0	100.0	100.0	100.0	100.0	100.0	100.0	100.0	100.0	100.0	December 2006
ሐምሌ 2004 - ሰኔ 2005	111.8	109.7	149.4	127.1	87.6	125.5	117.3	102.1	130.4	127.8	July 2012 - June 2013
ሐምሌ 2005 - ሰኔ 2006	119.7	118.0	151.0	130.7	86.9	132.7	130.7	106.2	148.5	133.6	July 2013 - June 2014
ሐምሌ 2006 - ሰኔ 2007	129.2	122.8	168.9	155.0	108.9	143.8	150.4	108.8	148.7	131.7	July 2014 - June 2015
ሐምሌ 2007 - ሰኔ 2008	134.1	125.5	205.1	179.9	91.3	164.4	168.0	119.0	152.0	128.4	July 2015 - June 2016
2008											2015/2016
ጥር 2008	134.8	127.3	206.2	175.8	91.3	170.1	169.3	113.7	151.8	123.9	January 2016
የካቲት 2008	132.1	127.5	206.9	178.8	91.2	169.6	151.6	113.5	149.2	122.2	February "
መጋቢት 2008	133.3	128.0	204.6	179.1	91.0	168.2	149.9	132.7	157.1	125.2	March "
ጊያዝያ 2008	135.5	126.7	202.9	182.7	91.1	172.4	162.4	135.6	154.4	139.6	April "
ግንቦት 2008	145.9	128.0	222.3	190.9	92.1	171.7	221.0	133.5	157.1	135.8	May "
ሰኔ 2008	141.7	127.9	218.8	198.8	91.1	172.1	192.7	133.6	151.7	139.5	June "
2009											2016/2017
ሐምሌ 2008	141.7	129.5	233.2	199.8	90.8	189.3	183.8	134.0	154.7	138.8	July 2016
ክሐሴ 2008	145.3	136.0	216.8	198.4	101.3	171.4	179.4	134.2	152.4	146.2	August "
መስከረም 2009	149.3	132.9	225.6	198.4	101.8	167.3	215.3	134.6	159.9	139.5	September "
ጥቅምት 2009	148.9	129.0	230.3	202.0	101.4	163.2	217.8	133.9	193.4	137.3	October "
ህዳር 2009	146.2	133.0	229.4	198.4	101.5	164.0	186.3	134.0	195.6	141.1	November "
ታህሳስ 2009	144.3	130.1	224.8	198.3	101.4	163.9	184.8	134.2	195.4	139.7	December "
ጥር 2009	141.6	128.2	226.3	200.6	101.5	166.4	173.8	134.6	197.9	134.7	January 2017
የካቲት 2009	140.3	127.2	228.2	198.4	101.7	183.4	157.6	141.9	218.1	144.7	February "
መጋቢት 2009	149.5	127.9	229.5	197.4	101.5	198.9	204.4	147.7	237.2	151.5	March "
ጊያዝያ 2009	153.1	130.3	236.6	199.0	102.0	205.0	212.7	142.8	261.7	150.2	April "

ሠንጠረዥ 8A: ጠቅላላ የምግብ የሽግግር ዋጋ መመዘኛ ኢንዱስትሪ ቢሮ የተካተቱ ክፍሎች ስጋምሌ ክልል መገንባት
 ታህሳስ 2004 =100

Table 8b: Consumer Price Index of Total Food and Its Components for Gambella Regional State
 December 2011 = 100

ወርና ዓመት	የምግብ ክፍሎች Food Consumer Price Index Components										
	ምግብና አልኮሎል ያልሆኑ መጠጦች	ዳቦና እህል	ሥጋ	ወተት ዓይብና ዕንቁላል	ዘይትና ትባቶች	ፍራፍሬ	አትክልትና ጥራጥሬ	ስኳር ግርና ቸካሌት	ሌሎች ምግቦች	አልኮሎል ያልሆኑ መጠጦች	Month an Year
Month an Year	Food and Non-Alcoholic Beverages	Bread and Cereals	Meat (ND)	Milk, cheese and eggs (ND)	Oils and fats (ND)	Fruit (ND)	Vegetables	Sugar, jam, honey, chocolate.	Food products n.e.c. (ND)	Non-Alcoholic Beverages and Coffee	Month an Year
ታህሳስ 2004	100.0	100.0	100.0	100.0	100.0	100.0	100.0	100.0	100.0	100.0	December 2006
ሐምሌ 2004 - ሰኔ 2005	114.8	104.4	132.8	125.3	104.0	130.7	126.6	107.8	130.6	77.9	July 2012 - June 2013
ሐምሌ 2005 - ሰኔ 2006	124.2	115.1	146.5	147.2	104.2	107.6	134.7	112.1	136.4	82.2	July 2013 - June 2014
ሐምሌ 2006 - ሰኔ 2007	129.9	111.4	155.9	163.9	99.9	131.8	148.6	116.4	141.1	99.5	July 2014 - June 2015
ሐምሌ 2007 - ሰኔ 2008	142.9	116.8	180.1	204.8	101.2	145.1	178.0	131.8	145.7	80.1	July 2015 - June 2016
2008											2015/2016
ጥር 2008	137.8	109.3	175.1	207.1	99.9	145.8	172.3	125.0	149.4	72.7	January 2016
የካቲት 2008	140.5	118.2	177.4	207.2	100.2	145.6	167.9	125.0	143.6	72.7	February "
መጋቢት 2008	140.4	117.9	180.2	207.1	99.5	145.3	165.8	137.0	136.2	71.6	March "
ጊያዝያ 2008	142.8	119.8	186.3	208.4	99.5	145.9	163.5	146.2	143.0	73.8	April "
ግንቦት 2008	148.1	121.3	178.4	215.7	104.8	146.3	194.5	152.8	155.5	77.1	May "
ሰኔ 2008	150.1	128.8	178.0	215.8	107.5	145.3	190.0	155.5	154.1	77.1	June "
2009											2016/2017
ሐምሌ 2008	151.7	129.5	176.5	226.6	108.3	145.3	192.3	174.2	160.7	77.7	July 2016
ክሐሴ 2008	148.3	124.7	176.2	226.7	91.4	146.3	182.5	180.0	159.7	86.0	August "
መስከረም 2009	154.9	122.7	199.2	227.5	97.9	145.2	189.1	150.5	173.5	95.4	September "
ጥቅምት 2009	151.5	122.9	193.5	215.7	91.4	146.2	182.2	155.5	163.3	97.2	October "
ህዳር 2009	146.1	116.9	190.2	216.1	93.0	146.2	161.9	166.9	163.5	98.9	November "
ታህሳስ 2009	150.0	120.1	189.5	246.2	95.1	146.2	170.2	165.4	165.9	97.2	December "
ጥር 2009	150.1	120.2	192.2	216.3	97.7	145.4	173.3	152.7	172.9	101.3	January 2017
የካቲት 2009	150.2	119.4	193.8	222.9	93.3	139.2	165.9	154.3	200.9	97.3	February "
መጋቢት 2009	153.1	121.0	191.7	216.4	90.3	144.9	188.8	152.7	202.9	93.5	March "
ጊያዝያ 2009	158.7	123.2	195.2	218.4	102.0	145.2	211.1	156.2	197.5	95.6	April "

ሠንጠረዥ 9ሐ፣ ጠቅላላ የምግብ የሽግግር ዋጋ መመዘኛ ኢንዱክስ በሥሩ የተካተቱ ክፍሎች ስሐረሬ ክልላዊ መገንባት
 ታህሳስ 2004 =100

Table 9b: Consumer Price Index of Total Food and Its Components for Harari Regional State
 December 2011 = 100

ወርና ዓመት	የምግብ ክፍሎች Food Consumer Price Index Components										
	ምግብና አልኮሎል ያልሆኑ መጠጦች	ዳቦና እህል	ሥጋ	ወተት ዓይብና ዕንቁላል	ዘይትና ትባቶች	ፍራፍሬ	አትክልትና ጥራጥሬ	ስኳር ግርና ቸካሌት	ሌሎች ምግቦች	አልኮሎል ያልሆኑ መጠጦች	Month an Year
Month an Year	Food and Non-Alcoholic Beverages	Bread and Cereals	Meat (ND)	Milk, cheese and eggs (ND)	Oils and fats (ND)	Fruit (ND)	Vegetables	Sugar, jam, honey, chocolate.	Food products n.e.c. (ND)	Non-Alcoholic Beverages and Coffee	Month an Year
ታህሳስ 2004	100.0	100.0	100.0	100.0	100.0	100.0	100.0	100.0	100.0	100.0	December 2006
ሐምሌ 2004 - ሰኔ 2005	119.0	116.7	148.7	114.8	96.6	115.5	127.3	101.3	117.7	109.6	July 2012 - June 2013
ሐምሌ 2005 - ሰኔ 2006	131.5	128.4	173.6	128.7	94.7	122.2	154.6	100.9	116.7	103.7	July 2013 - June 2014
ሐምሌ 2006 - ሰኔ 2007	145.6	141.8	193.7	143.1	96.6	152.1	183.4	100.7	133.0	96.0	July 2014 - June 2015
ሐምሌ 2007 - ሰኔ 2008	156.5	142.8	213.3	165.7	97.5	150.5	210.3	110.3	221.0	88.6	July 2015 - June 2016
2008											2015/2016
ጥር 2008	157.6	145.1	206.8	165.7	98.4	147.9	221.0	99.0	219.8	83.8	January 2016
የካቲት 2008	155.5	143.3	206.7	165.4	98.4	154.5	209.4	125.4	201.6	82.4	February "
መጋቢት 2008	154.1	142.9	206.7	165.1	98.4	151.6	192.8	125.4	214.2	84.8	March "
ጊያዝያ 2008	158.7	142.5	216.9	173.3	96.3	152.1	209.2	125.4	239.7	95.7	April "
ግንቦት 2008	165.4	138.1	234.5	176.2	96.6	192.7	267.7	125.4	241.2	99.1	May "
ሰኔ 2008	166.5	139.2	244.6	187.0	96.6	183.4	259.5	125.4	226.6	101.6	June "
2009											2016/2017
ሐምሌ 2008	167.2	142.3	249.1	168.9	96.6	157.6	264.5	125.4	226.7	97.7	July 2016
ክሐሴ 2008	169.8	151.2	244.8	188.1	96.5	164.6	246.0	126.7	186.5	104.1	August "
መስከረም 2009	178.5	154.0	253.6	208.7	96.4	147.0	292.1	126.7	177.3	109.8	September "
ጥቅምት 2009	169.6	153.2	239.6	194.6	96.5	151.8	240.3	126.7	160.6	118.5	October "
ህዳር 2009	169.9	146.2	246.7	204.3	96.5	149.0	260.3	126.7	167.6	118.6	November "
ታህሳስ 2009	168.0	150.5	245.8	203.6	96.4	159.4	222.7	118.6	173.1	118.1	December "
ጥር 2009	160.7	138.2	259.7	203.8	96.6	154.5	195.4	121.4	189.1	114.4	January 2017
የካቲት 2009	163.5	139.7	246.3	200.2	98.3	163.3	222.1	123.2	202.7	118.9	February "
መጋቢት 2009	173.2	140.7	253.4	203.6	98.4	176.6	295.4	121.4	187.9	138.0	March "
ጊያዝያ 2009	173.6	149.8	277.8	206.3	95.8	183.4	232.6	120.4	216.0	102.1	April "

ሠንጠረዥ 10ሀ፣ ጠቅላላ የምግብ የሽግግር ዋጋ መመዘኛ ኢንዱክስ በሥሩ የተካተቱ ክፍሎች ለአርጌያ ክልላዊ መንግስት
 ታህሳስ 2004 =100

Table 10b: Consumer Price Index of Total Food and Its Components for Oromia Regional State
 December 2011 = 100

ወርና ዓመት	የምግብ ክፍሎች Food Consumer Price Index Components										
	ምግብና አልኮሎል ያልሆኑ መጠጦች	ዳቦና እህል	ሥጋ	ወተት ዓይብና ዕንቁላል	ዘይትና ትባቶች	ፍራፍሬ	አትክልትና ጥራጥሬ	ስኳር ግርና ቸኩሊት	ሌሎች ምግቦች	አልኮሎል ያልሆኑ መጠጦች	Month an Year
Month an Year	Food and Non-Alcoholic Beverages	Bread and Cereals	Meat (ND)	Milk, cheese and eggs (ND)	Oils and fats (ND)	Fruit (ND)	Vegetables	Sugar, jam, honey, chocolate.	Food products n.e.c. (ND)	Non-Alcoholic Beverages and Coffee	Month an Year
ታህሳስ 2004	100.0	100.0	100.0	100.0	100.0	100.0	100.0	100.0	100.0	100.0	December 2006
ሐምሌ 2004 - ሰኔ 2005	115.6	117.2	145.8	131.6	107.8	128.7	118.1	111.3	96.4	80.1	July 2012 - June 2013
ሐምሌ 2005 - ሰኔ 2006	123.3	125.4	160.9	144.9	111.6	132.0	123.1	123.3	96.3	80.2	July 2013 - June 2014
ሐምሌ 2006 - ሰኔ 2007	139.5	126.9	175.9	167.8	140.2	138.1	143.1	125.9	149.2	90.0	July 2014 - June 2015
ሐምሌ 2007 - ሰኔ 2008	158.1	135.5	199.7	200.1	150.1	157.8	165.0	130.9	222.5	78.4	July 2015 - June 2016
2008											2015/2016
ጥር 2008	153.4	137.1	201.5	201.7	151.8	162.7	149.5	123.4	186.7	76.7	January 2016
የካቲት 2008	152.9	135.5	198.8	205.4	145.0	160.6	157.9	134.7	169.4	75.0	February "
መጋቢት 2008	155.7	133.6	200.0	203.6	142.2	161.3	170.0	145.6	170.0	74.0	March "
ጊያዝያ 2008	156.4	136.5	198.0	203.6	147.3	161.4	172.3	126.2	168.9	77.9	April "
ግንቦት 2008	156.9	137.9	206.4	227.8	153.8	162.2	174.2	133.9	168.5	79.3	May "
ሰኔ 2008	158.4	139.4	209.9	210.9	152.1	164.2	182.7	140.4	164.2	81.6	June "
2009											2016/2017
ሐምሌ 2008	159.9	140.8	211.3	207.1	150.6	164.9	185.9	144.4	159.7	85.3	July 2016
ክሐሴ 2008	159.0	145.1	210.2	206.2	151.2	154.9	182.2	144.7	159.0	89.1	August "
መስከረም 2009	163.0	148.5	216.6	212.3	156.0	157.7	187.7	144.5	157.4	95.3	September "
ጥቅምት 2009	159.1	150.4	212.8	205.3	152.4	157.5	167.8	150.7	149.4	96.6	October "
ህዳር 2009	155.6	146.7	207.1	209.8	151.5	161.3	157.2	154.0	138.9	99.2	November "
ታህሳስ 2009	153.2	141.1	212.3	204.0	153.4	158.7	157.1	172.6	124.0	100.9	December "
ጥር 2009	156.0	140.2	215.3	210.8	158.0	161.5	158.7	173.3	129.2	96.9	January 2017
የካቲት 2009	153.7	136.6	215.3	215.7	156.8	166.8	162.8	142.7	126.6	95.4	February "
መጋቢት 2009	157.1	141.7	209.9	211.1	155.9	169.3	173.4	142.9	125.6	95.0	March "
ጊያዝያ 2009	165.5	150.9	221.8	219.6	167.9	163.1	186.2	151.2	132.6	92.0	April "

ሠንጠረዥ 11A: ጠቅላላ የምግብ የሽግግር ዋጋ መመዘኛ ኢንዱስትሪ በሥሩ የተካተቱ ክፍሎች ለደቡብ ህዝቦች ክልላዊ መገንባት
 ታህሳስ 2004 =100

Table 12b: Consumer Price Index of Total Food and Its Components for SNNP Regional State
 December 2011 = 100

ወርና ዓመት	የምግብ ክፍሎች Food Consumer Price Index Components										
	ምግብና አልኮሎል ያልሆኑ መጠቦች	ዳቦና እህል	ሥጋ	ወተት ዓይብና ዕንቁላል	ዘይትና ትባቶች	ፍራፍሬ	አትክልትና ጥራጥሬ	ስኳር ግርና ቸካሌት	ሌሎች ምግቦች	አልኮሎል ያልሆኑ መጠቦች	Month an Year
Month an Year	Food and Non- Alcoholic Beverages	Bread and Cereals	Meat (ND)	Milk, cheese and eggs (ND)	Oils and fats (ND)	Fruit (ND)	Vegetables	Sugar, jam, honey, chocolate.	Food products n.e.c. (ND)	Non-Alcoholic Beverages and Coffee	Month an Year
ታህሳስ 2004	100.0	100.0	100.0	100.0	100.0	100.0	100.0	100.0	100.0	100.0	December 2006
ሐምሌ 2004 - ሰኔ 2005	123.2	117.0	144.6	121.6	109.1	119.0	135.2	100.5	105.2	84.4	July 2012 - June 2013
ሐምሌ 2005 - ሰኔ 2006	131.8	123.3	163.8	136.8	112.5	112.5	146.1	100.4	108.7	84.3	July 2013 - June 2014
ሐምሌ 2006 - ሰኔ 2007	139.1	119.7	176.4	157.0	125.7	125.1	153.4	103.7	128.0	108.9	July 2014 - June 2015
ሐምሌ 2007 - ሰኔ 2008	152.1	128.9	196.4	176.2	133.1	144.1	167.5	106.4	199.5	88.1	July 2015 - June 2016
2008											2015/2016
ጥር 2008	152.9	127.6	196.8	174.7	132.4	152.4	173.0	99.9	192.1	79.8	January 2016
የካቲት 2008	148.1	126.5	194.4	180.0	128.3	157.6	162.9	104.9	183.4	82.9	February "
መጋቢት 2008	151.5	128.5	194.6	187.2	128.3	143.9	169.2	109.6	187.0	81.5	March "
ጊያዝያ 2008	153.8	132.4	201.3	178.2	135.7	139.4	167.6	111.9	209.6	83.7	April "
ግንቦት 2008	158.3	138.9	201.4	188.3	138.4	132.8	171.0	113.1	222.4	85.5	May "
ሰኔ 2008	163.8	142.6	206.1	191.2	133.2	139.2	179.1	112.3	235.7	88.6	June "
2009											2016/2017
ሐምሌ 2008	158.7	144.2	205.2	183.9	132.2	151.0	167.3	113.9	224.4	89.4	July 2016
ክሐሴ 2008	160.4	138.0	205.8	193.2	129.2	148.9	176.0	112.5	211.7	94.4	August "
መስከረም 2009	163.4	144.9	210.3	188.4	137.9	160.0	174.9	112.5	218.9	99.0	September "
ጥቅምት 2009	161.5	141.6	210.0	188.5	131.0	166.6	173.6	113.3	216.8	99.2	October "
ህዳር 2009	161.5	139.9	209.0	193.1	126.6	163.9	178.7	115.6	192.5	96.1	November "
ታህሳስ 2009	164.8	141.1	202.9	194.1	132.4	163.4	185.9	107.4	201.4	93.3	December "
ጥር 2009	164.6	143.8	211.1	195.2	142.4	153.6	180.0	113.6	208.7	92.6	January 2017
የካቲት 2009	174.4	143.4	212.1	198.0	139.6	164.0	202.6	112.8	216.0	96.1	February "
መጋቢት 2009	178.4	146.8	214.5	201.7	146.4	173.6	207.5	115.8	220.9	96.1	March "
ጊያዝያ 2009	192.1	164.2	221.1	204.5	168.1	167.2	223.3	115.8	232.1	96.5	April "

ሠንጠረዥ 12ለ1 ጠቅላላ የምግብ የሽግግር ዋጋ መመዘኛ ኢንዱክስ በሥሩ የተካተቱ ክፍሎች ለሰማሌ ክልላዊ መንግስት
 ታህሳስ 2004 =100

Table 12b: Consumer Price Index of Total Food and Its Components for Somali Regional State
 December 2011 = 100

ወርና ዓመት	የምግብ ክፍሎች Food Consumer Price Index Components										
	ምግብና አልኮሎል ያልሆኑ መጠጦች	ዳቦና እህል	ሥጋ	ወተት ዓይብና ዕንቁላል	ዘይትና ትባቶች	ፍራፍሬ	አትክልትና ጥራጥሬ	ስኳር ግርና ቸካሌት	ሌሎች ምግቦች	አልኮሎል ያልሆኑ መጠጦች	Month an Year
Month an Year	Food and Non- Alcoholic Beverages	Bread and Cereals	Meat (ND)	Milk, cheese and eggs (ND)	Oils and fats (ND)	Fruit (ND)	Vegetables	Sugar, jam, honey, chocolate.	Food products n.e.c. (ND)	Non-Alcoholic Beverages and Coffee	Month an Year
ታህሳስ 2004	100.0	100.0	100.0	100.0	100.0	100.0	100.0	100.0	100.0	100.0	December 2006
ሐምሌ 2004 - ሰኔ 2005	115.5	109.8	142.1	117.6	101.1	135.6	125.4	116.0	126.7	179.4	July 2012 - June 2013
ሐምሌ 2005 - ሰኔ 2006	123.0	121.0	149.2	125.2	97.4	169.2	143.2	111.5	149.1	201.0	July 2013 - June 2014
ሐምሌ 2007 - ሰኔ 2008	137.3	132.1	163.8	154.8	105.8	239.0	164.7	120.8	158.4	214.8	July 2015 - June 2016
2008											2015/2016
ጥር 2008	137.7	132.4	162.2	153.5	107.5	236.7	166.6	123.1	153.8	215.6	January 2016
የካቲት 2008	140.4	134.6	164.1	170.0	104.4	266.6	149.8	119.7	170.6	212.8	February "
መጋቢት 2008	141.2	135.4	164.8	172.4	104.2	266.9	146.5	124.2	156.9	211.9	March "
ሚያዝያ 2008	139.9	134.3	172.9	162.9	104.8	266.9	156.0	124.7	156.0	207.9	April "
ግንቦት 2008	141.7	130.7	178.7	164.2	99.7	227.2	220.8	125.8	156.1	212.7	May "
ሰኔ 2008	136.5	130.9	173.5	137.5	99.3	240.3	209.0	126.9	148.0	206.8	June "
2009											2016/2017
ሐምሌ 2008	139.8	129.9	190.8	139.4	106.8	249.0	245.1	123.7	183.4	198.8	July 2016
ክለሌ 2008	141.6	134.1	177.3	157.5	105.5	226.8	182.9	127.1	172.4	217.7	August "
መስከረም 2009	145.5	135.6	185.3	166.9	103.2	220.4	203.7	129.8	177.4	214.3	September "
ጥቅምት 2009	146.0	133.8	178.2	169.9	106.0	206.5	189.9	139.9	167.8	218.8	October "
ህዳር 2009	150.9	131.7	185.8	186.8	106.2	212.4	174.3	155.2	182.8	226.3	November "
ታህሳስ 2009	149.6	131.7	175.6	175.1	115.5	213.5	166.6	160.8	179.2	209.8	December "
ጥር 2009	152.4	137.7	171.6	177.9	117.7	216.8	159.6	159.7	177.8	222.6	January 2017
የካቲት 2009	156.3	136.5	173.7	190.6	133.8	247.0	170.7	160.1	189.2	223.7	February "
መጋቢት 2009	161.2	141.4	175.5	202.7	136.3	241.9	183.0	159.0	195.1	220.7	March "
ሚያዝያ 2009	162.6	141.5	212.0	204.9	137.7	253.4	191.2	153.5	208.3	213.3	April "

ሠንጠረዥ 13ለ1 ጠቅላላ የምግብ የሽግግር ዋጋ መመዘኛ ኢንዱክስ በሥሩ የተካተቱ ክፍሎች ስትግራይ ክልላዊ መገንከት ታህሳስ 2004 =100

Table 13b: Consumer Price Index of Total Food and Its Components for Tigray Regional State
December 2011 = 100

ወርና ዓመት	የምግብ ክፍሎች Food Consumer Price Index Components										
	ምግብና አልኮሎል ያልሆኑ መጠቦች	ዳቦና ለህል	ሥጋ	ወተት ዓይብና ዕንቁላል	ዘይትና ቅባቶች	ፍራፍሬ	አትክልትና ጥራጥሬ	ስኳር ግርና ቸካሌት	ሌሎች ምግቦች	አልኮሎል ያልሆኑ መጠቦች	Month an Year
Month an Year	Food and Non-Alcoholic Beverages	Bread and Cereals	Meat (ND)	Milk, cheese and eggs (ND)	Oils and fats (ND)	Fruit (ND)	Vegetables	Sugar, jam, honey, chocolate.	Food products n.e.c. (ND)	Non-Alcoholic Beverages and Coffee	Month an Year
ታህሳስ 2004	100.0	100.0	100.0	100.0	100.0	100.0	100.0	100.0	100.0	100.0	December 2006
ሐምሌ 2004 - ሰኔ 2005	121.3	133.6	135.3	129.1	108.0	113.3	99.6	101.1	130.6	79.3	July 2012 - June 2013
ሐምሌ 2005 - ሰኔ 2006	130.2	146.8	151.2	138.6	110.1	72.6	108.3	99.3	130.6	77.2	July 2013 - June 2014
ሐምሌ 2006 - ሰኔ 2007	129.5	133.6	150.7	148.0	114.9	96.2	122.4	99.3	138.8	91.7	July 2014 - June 2015
ሐምሌ 2007 - ሰኔ 2008	145.6	143.7	155.9	158.0	117.8	117.6	155.6	109.7	195.1	82.2	July 2015 - June 2016
2008											2015/2016
ጥር 2008	148.2	146.7	159.9	161.0	117.7	125.7	155.6	100.1	205.2	79.4	January 2016
የካቲት 2008	145.2	143.7	154.2	164.7	112.9	125.7	148.0	118.6	207.0	79.3	February "
መጋቢት 2008	145.9	144.3	151.2	153.0	113.2	125.7	157.7	118.6	200.3	79.7	March "
ግንቦት 2008	146.1	145.3	147.4	133.9	112.9	125.7	159.9	124.1	201.7	80.2	April "
ግንቦት 2008	149.1	147.0	169.1	157.4	116.3	125.7	157.5	124.2	196.0	78.0	May "
ሰኔ 2008	155.1	152.4	169.5	163.1	117.8	125.7	178.5	122.5	196.5	77.1	June "
2009											2016/2017
ሐምሌ 2008	154.6	151.5	173.7	164.4	118.7	125.7	174.0	125.5	194.7	78.4	July 2016
ክሐሴ 2008	158.8	163.5	172.0	159.6	116.4	125.7	168.5	120.1	201.4	77.5	August "
መስከረም 2009	166.3	164.4	189.3	173.8	117.1	125.7	184.6	130.3	215.5	80.9	September "
ጥቅምት 2009	159.6	162.0	178.6	176.0	117.1	125.7	157.3	127.3	218.8	79.9	October "
ህዳር 2009	159.2	159.5	180.7	170.9	120.4	125.7	151.5	129.3	225.5	87.6	November "
ታህሳስ 2009	151.8	145.3	170.9	158.9	118.2	125.7	149.5	133.1	230.4	87.6	December "
ጥር 2009	149.9	142.9	180.6	175.0	114.1	125.7	142.0	122.0	219.2	92.0	January 2017
የካቲት 2009	154.3	149.6	173.5	170.8	126.6	125.7	141.6	126.8	235.4	95.0	February "
መጋቢት 2009	157.4	152.7	174.6	142.4	129.1	125.7	151.6	127.8	238.3	95.1	March "
ግንቦት 2009	162.5	157.1	186.2	149.7	128.5	125.7	158.3	126.1	248.8	89.0	April "