

Introduction

The Consumer Price Index (CPI) measures the average change in the price paid by consumers for a fixed market basket of goods and services. It is usually based on household expenditure weights of the goods and services in the basket and their current market prices. The twelve CPI's (i.e., the CPI's of the 11 Regions and the CPI at Country Level) presented in this report are based on the results of the Household Income, Consumption and Expenditure Survey (HICES) conducted by the Central Statistical Authority in 1999/2000 from which expenditure weights are derived for major household goods and services of that period and adjusted using the December 2000 retail prices of the goods and services as a base period.

This report is the first of its kind in Ethiopia which consists of Regional and Country Level CPI's with December 2000 as a base period. However, similar indices had been utilized at Addis Ababa Level since 1963 and at Country, Urban and Rural Levels since 1995/96. All the twelve indices have eleven major groups each, namely: Food; Beverages; Cigarettes and Tobacco; Clothing and Footwear; House Rent, Construction Materials, Water, and Fuel and Power; Furniture, Furnishing, Household Equipment and Operation; Medical Care and Health; Transport and Communication; Recreation, Entertainment and Education; Personal Care and Effects; and Miscellaneous Goods and Services.

The Food Index, which is the major component of the General Index in all cases, has 13 sub-groups each in all indices. These are: Cereals; Pulses; Bread and Other Prepared Food; Meat; Milk, Cheese and Eggs; Vegetables and Fruits; Spices; Potatoes, Other Tubers and Stems; Coffee Beans (whole) and Tea Leaves; Other Food Items; Milling Charges; and Food taken Away from Home.

For the construction of the current consumer price indices, up to date data on retail prices are collected in the purposely selected sample market places located in representative urban centers in each zone/special weredas of the country. In each zone, a maximum of two urban centers (market places) and one urban center (market place) in each especial wereda was selected which is mainly the capital of that wereda. Hence, a total of 119 market places were selected for the retail price survey. The distribution of urban center the market place of each region and items included in the basket of commodities are given on Table A above.

In each urban center market place an enumerator is assigned for undertaking the data collection activities of the retail price survey. At the end of each budget year, these enumerators take part on training and the training concentrated on the methodology of data collection and use of field equipment to be used during the survey. The enumerators are expected to collect the monthly retail prices of goods and services by interviewing the retailers and by actually measuring the weight of the items on the spot for each month in question. In some cases, price data are also collected from consumers at the time of purchase of the goods and services. An attempt was made to reduce the time lag between the data collection and the CPI data dissemination at country and regional levels by adjusting slightly the period of data collection. That is, instead of collecting price data from 8th through 22nd days of the month in question, the newly adjusted time frame is the 1st day through 15th days of European Calendar month under consideration. To calculate the monthly regional consumer price indices, geometric mean of prices of the specific regions are used.

For the Construction of the Consumer Price Index at Country Level the contributions of the five relatively major regions in terms of the magnitude of the expenditure account for more than 95 percent. These regions are Oromiya, Amhara, SNNP, Addis Ababa and Tigray. On the other hand, the contributions of the remaining regions (Somali, Dire Dawa, Harari, Gambela, Benshangul-Gumuz and Afar) to the Country Level Consumer Price Index is about five percent.

An important factor in constructing a Consumer Price Index is to select the representative basket of goods and services. Though the procedure for choosing the basket of commodity by expenditure cut-off points, the total number of items included in the regional basket in the December 2000 based indices are given in Table A above.

Table A: Number of Markets Covered and Basket of Commodities by Region

Sr.No	Region	Number of Markets	Basket of Commodities
1	Tigray	8	114
2	Afar	4	85
3	Amhara	20	118
4	Oromia	24	127
5	Somalie	6	85
6	Benishangul-Gumuz	6	111
7	SNNP	31	130
8	Gambela	3	105
9	Harari	2	102
10	Addis Ababa City Administration	12	175
11	Dire Dawa Administrative Council	3	121
	Total	119	

Comparison of CPI Movements, Current vs Last year's Similar Months at Country Level

The April 2007 Country Level Consumer Price Index has increased by 24.0 percent as compared to April 2006 (Table 1(a)). This increase was attributed to the rise in the indices of its components; namely: Food by 26.8 percent, Beverages by 19.9 percent, Cigarettes and Tobacco by 0.7 percent, Clothing and Footwear by 8.5 percent, House Rent, Construction Materials, Water and Fuel and Power by 23.6 percent, Furniture, Furnishings, Household Equipment and Operation by 21.1 percent, Medical Care and Health by 7.5 percent, Transport and Communication by 26.8 percent, Recreation, Entertainment and Education by 7.2 percent and Personal Care and Effects by 17.2 percent.

The 26.8 percent increase in the Food index was observed due to rise in the indices of the components of Food index (Table 1(b)) namely: Cereals by (21.2 percent), Pulses (39.1 percent), Bread and Other Prepared Food (27.9 percent), Meat (36.4 percent), Milk, Cheese and Eggs (24.4 percent), oils and Fats by (30.9 percent), Vegetables and fruits (35.7 percent), Spices (62.2 percent), Potatoes, Other Tubers and Stems (20.7 percent), Coffee and Tea Leaves (20.6 percent), Milling Charge by (19.2 percent), and Food Taken Away from Home (21.8 percent). On the other hand, decline was observed in the index of other Food Items by 6.6 percent.

Comparison of CPI Movements, Current vs Last year at Country and Regional Levels

Table 2(a) also displays that the April 2007 Country level General Consumer Price Index has increased by 24.0 percent as compared to April 2006. This increase was attributed to the rise in the indices of its constituent regions; namely: Addis Ababa 21.1 percent, Afar 18.1 percent, Amhara 25.6 percent, Benishangul Gumuz 11.1 percent, Dire Dawa 20.0 percent, Gambela 21.3 percent, Harari 27.6 percent, Oromia 21.5 percent, SNNP 3.6 percent, Somali 5.3 percent and Tigray 13.0 percent.

Table 2 (b) reveals that the 26.8 percent increase in the country level Food index was observed due to a rise in the indices of the regions namely: Addis Ababa 30.1 percent, Afar 29.6 percent, Amhara 26.1 percent, Benishangul Gumuz 11.0 percent, Dire Dawa 21.2 percent, Gambela 27.9 percent, Harari 16.3 percent, Oromia 30.6 percent, SNNP 25.5 percent, Somali 6.3 percent and Tigray 15.5 percent.

ሰንጠረዥ 10፡ ጠቅላላ የኖርዎች ዋጋ ሙሉንም ሊገልጽ የሚችል የተገኘውን የዘር አተፎ ሊረዥ ይችላል

Table 1a: General Consumer Price Index and Its Components at Country Level
December 2000 = 100

ወር ዓመት	ጠቅላላ አገልጋሪ	ጠቅላላ ምግብ	ጠጠየ	ሲጌሬና ታቦቶ	ልብና ሙሽጊያ	የቤት ሲራይ፣ የቤት ሙሽጊያ ልቦች፣ ወጥኛ አገር	የቤት ልቦች ዕቃዎች፣ ሙሽጊያ የቤት ዕቃዎች ደመጫ	ህክምና	ትራንስፖርትና ጠጥሻ	ጥራጥና ታቦቶ	ገላ ገጠናዊ የገላ ስራ ልቦች	ሌሎች ልቦች	Month and Year
ኅዳር 1993	100.0	100.0	100.0	100.0	100.0	100.0	100.0	100.0	100.0	100.0	100.0	100.0	December 2000
ጥር - ሰኔ 1993	100.8	101.3	100.1	102.2	99.7	100.1	100.3	97.0	99.9	101.6	95.0	104.4	January - June 2001
ጥቅምት 1993 - ሰኔ 1994	96.0	92.7	98.6	100.0	97.8	103.8	99.1	94.7	101.3	112.1	99.0	103.8	July - June 2002
ጥቅምት 1994 - ሰኔ 1995	110.5	115.7	99.2	107.2	95.5	106.1	97.6	94.7	105.5	113.7	100.6	103.7	July 2002 - June 2003
ጥቅምት 1995 - ሰኔ 1996	120.0	129.4	99.4	104.3	96.0	112.8	97.3	93.4	107.5	112.8	107.5	103.7	July 2003 - June 2004
ጥቅምት 1996 - ሰኔ 1997	128.2	139.3	100.3	93.3	96.9	123.2	99.6	98.1	116.0	116.4	122.0	103.7	July 2004 - June 2005
ጥቅምት 1997 - ሰኔ 1998	143.9	158.8	107.2	103.9	100.0	139.1	105.4	99.7	123.4	121.3	133.9	103.7	July 2005 - June 2006
ጥቅምት 1998 - ሰኔ 1999	169.6	188.8	118.9	106.7	108.5	168.9	119.8	105.0	149.8	130.0	156.4	103.7	July 2006 - June 2007
ጥቅምት 1999													2005/2006
ሰኔ 1998	154.3	170.5	111.5	106.6	103.1	152.1	112.9	103.7	136.6	124.4	145.7	103.7	June 2006
ጥቅምት 1999													2006/2007
ጥቅምት 1998	159.0	175.8	112.5	105.9	105.6	159.4	113.7	102.6	137.5	123.9	149.8	103.7	July 2006
ኤልፌ 1998	161.2	178.3	112.8	106.3	107.4	161.9	114.5	102.8	138.7	125.8	152.0	103.7	August "
መስከረም 1999	163.9	181.0	113.2	105.5	107.2	166.2	115.6	103.0	151.5	130.2	152.2	103.7	September "
ኅዳር 1999	164.2	181.9	113.2	102.9	106.2	165.8	114.6	103.1	150.8	129.4	152.7	103.7	October "
ወር 1999	165.0	182.8	114.4	104.4	106.0	166.5	117.0	102.6	151.9	130.0	154.0	103.7	November "
ኅዳር 1999	166.4	184.4	116.0	105.6	106.0	168.2	118.3	102.4	152.6	130.3	155.3	103.7	December "
ጥር 1999	168.1	186.4	117.4	106.5	108.0	169.6	120.5	104.4	151.2	130.1	155.9	103.7	January 2007
የቅብት 1999	170.4	190.1	121.4	107.3	107.3	169.0	120.2	104.4	150.3	129.8	156.5	103.7	February "
መጋቢት 1999	175.5	196.6	123.5	108.5	110.9	172.3	123.2	106.0	152.0	132.7	161.1	103.7	March "
ግንባታ 1999	179.3	201.7	132.1	108.0	113.0	172.8	125.4	108.1	154.3	133.1	159.8	103.7	April "

*Revised (የተረጎመ)

ሰንጠረዥ 11፡ ጠቅላላ የምግብ የኖርዎች ዋጋ ሙሉንም ሊገልጽ የሚችል የተገኘውን የዘር አተፎ ሊረዥ ይችላል

Table 1b: Consumer Price Index of Total Food and Its Components at Country Level
December 2000 = 100

ወር ዓመት	ጠቅላላ ምግብ	በቤት ውስጥ የተወሰደ የምግብ ዓይነቶች											በቤት ውጪ የተወሰደ ምግብ	Month and Year
		አሳፊ	ጥፋፋ	ልቦና የተዘጋጀ ምግብ	ሥጋ	ወተትና ዓይነት አገልግሎት	ዘይትና ቅተኛ	እኩልነት ዓይነት	ትጠጥ ትጠጥ	ፍጥናት ሌሎች ሥራዎች	ታላቅ ቤትና ጽሑፍ ቅጠል	ሌሎች ምግብ		
ኅዳር 1993	100.0	100.0	100.0	100.0	100.0	100.0	100.0	100.0	100.0	100.0	100.0	100.0	100.0	December 2000
ጥር - ሰኔ 1993	101.3	103.2	97.6	97.7	109.3	98.2	96.2	103.5	104.9	95.0	97.5	104.9	103.8	Jan. - June 2001
ጥቅምት 1993 - ሰኔ 1994	92.8	90.7	86.1	88.5	112.2	93.7	88.6	100.2	88.8	96.7	87.8	92.6	100.7	July - June 2002
ጥቅምት 1994 - ሰኔ 1995	115.7	136.6	106.4	92.8	117.9	97.6	114.7	107.5	104.0	103.7	74.6	96.7	100.8	July 2002 - June 2003
ጥቅምት 1995 - ሰኔ 1996	129.4	152.7	117.5	98.4	131.1	104.1	126.2	117.2	131.7	113.0	91.5	95.6	99.9	July 2003 - June 2004
ጥቅምት 1996 - ሰኔ 1997	139.3	163.9	119.6	100.0	142.6	106.7	127.4	118.3	155.1	119.3	119.6	101.2	103.0	July 2004 - June 2005
ጥቅምት 1997 - ሰኔ 1998	158.8	191.1	125.0	113.7	179.9	115.8	126.2	131.9	155.7	134.7	148.6	113.9	108.4	July 2005 - June 2006
ጥቅምት 1998 - ሰኔ 1999	188.8	223.2	159.0	136.9	225.6	134.2	146.0	171.3	195.8	156.4	168.6	116.6	119.7	July 2006 - June 2007
ጥቅምት 1999														2005/2006
ሰኔ 1998	170.5	202.0	137.0	124.4	212.3	120.3	129.1	158.6	149.7	142.1	164.4	123.9	109.0	June 2006
ጥቅምት 1999														2006/2007
ጥቅምት 1998	175.8	212.8	139.4	127.8	213.9	122.8	126.8	160.3	151.9	147.5	163.4	121.7	109.6	July 2006
ኤልፌ 1998	178.3	215.8	142.4	130.2	215.7	125.2	127.3	161.9	155.4	150.1	164.8	121.5	111.0	August "
መስከረም 1999	181.0	219.7	146.4	132.2	219.7	126.8	131.0	162.5	157.4	151.6	163.3	119.3	113.7	September "
ኅዳር 1999	181.9	221.6	147.2	126.7	218.0	128.2	130.9	162.2	157.9	153.0	162.7	118.1	113.9	October "
ወር 1999	182.8	222.5	149.1	128.0	218.4	129.9	133.1	163.5	159.7	154.4	161.7	115.6	115.7	November "
ኅዳር 1999	184.4	224.6	151.0	128.0	219.6	130.5	138.3	164.3	160.2	154.8	163.4	114.4	117.0	December "
ጥር 1999	186.4	225.3	154.9	131.7	221.8	132.5	145.2	164.1	164.3	156.7	165.6	114.6	119.0	January 2007
የቅብት 1999	190.1	224.8	170.9	135.7	224.2	134.3	148.3	176.0	174.1	160.7	167.3	112.2	120.4	February "
መጋቢት 1999	196.6	225.4	171.2	146.6	227.2	140.0	155.4	189.0	239.5	159.4	176.7	113.8	129.1	March "
ግንባታ 1999	201.7	227.7	176.7	151.2	247.1	146.7	169.9	193.8	251.2	163.9	179.0	117.1	130.4	April "

ግንዛቤ 2፡- ጠቅላላ የኑሮች ዋጋ መጠኖች ለገጠማዊ ሀገር ላቶ ለና ለዘጠሙ ደረጃ

Table 2a: Summary of General Consumer Price Indices at Country and Regional Levels
December 2000=100

ወር ዓመት	Reporting Level												Month and Year
	Eth.	A.A.	Afar	Amhara	B.Gumuz	D.Dawa	Gambela	Harari	Oromia	SNNP	Somalia	Tigray	
ፓህሌ 1993	100.0	100.0	100.0	100.0	100.0	100.0	100.0	100.0	100.0	100.0	100.0	100.0	December 2000
የጠጠሪ ድርሻ	100.0	6.94	0.54	25.70	1.13	0.68	0.26	0.39	36.68	20.33	1.12	6.25	Weight Contribution
ኅረት - ሰኔ 1993	100.8	98.9	103.8	100.7	99.1	101.5	105.1	102.0	102.0	98.3	102.8	103.3	January - June 2001
ሐምሌ 1993 - ሰኔ 1994	96.0	95.7	99.2	94.6	101.2	97.5	98.7	98.3	96.5	96.4	99.8	95.8	July - June 2002
ሐምሌ 1994 - ሰኔ 1995	110.5	100.1	107.8	111.0	115.9	103.7	114.0	108.3	117.0	101.8	111.1	109.2	July 2002 - June 2003
ሐምሌ 1995 - ሰኔ 1996	120.0	105.8	115.9	125.5	135.8	107.0	117.9	113.5	126.2	109.0	110.4	113.3	July 2003 - June 2004
ሐምሌ 1996 - ሰኔ 1997	128.2	113.4	119.3	133.2	142.1	113.6	127.3	120.2	134.8	118.5	121.4	123.4	July 2004 - June 2005
ሐምሌ 1997 - ሰኔ 1998	143.9	122.9	128.5	150.9	153.6	126.1	149.6	135.3	148.3	136.6	137.9	138.8	July 2005 - June 2006
ሐምሌ 1998 - ሰኔ 1999	169.6	169.6	169.6	169.6	169.6	169.6	169.6	169.6	169.6	169.6	169.6	169.6	July 2006 - June 2007
1998													2005/2006
ሰኔ 1998	154.3	133.0	136.9	161.1	163.0	132.7	162.9	148.7	159.8	147.7	143.4	143.4	June 2006
1999													2006/2007
ሐምሌ 1998	159.0	135.0	137.2	166.9	164.2	136.6	163.1	149.6	166.0	150.5	146.3	146.2	July 2006
ክለሳ 1998	161.2	137.3	138.4	169.0	164.8	136.8	166.0	152.3	168.2	153.2	147.4	147.8	August "
መስከረም 1999	163.9	142.6	141.2	173.1	167.3	141.1	166.3	154.3	169.7	155.5	148.1	148.9	September "
ተኅሣሥ 1999	164.2	144.5	142.7	174.0	168.3	141.4	167.8	154.8	171.4	156.7	148.4	150.0	October "
ሠርዓ 1999	165.0	144.7	143.3	174.1	169.3	141.9	168.8	154.7	172.9	157.8	147.6	150.3	November "
ፓህሌ 1999	166.4	145.4	143.6	175.9	170.7	142.8	168.7	155.6	174.8	158.9	147.3	149.1	December "
ኅረት 1999	168.1	145.4	143.9	177.9	171.2	143.3	168.1	156.6	177.0	160.5	147.1	150.3	January 2007
የቀብት 1999	170.4	144.8	145.2	180.3	171.0	144.6	170.1	156.4	180.0	161.7	146.7	150.0	February "
ጠቅላይ 1999	175.5	149.4	152.9	185.5	176.4	153.2	176.9	163.1	185.1	163.6	148.3	156.0	March "
ሚያዝያ 1999	179.3	151.3	155.1	189.8	175.7	153.0	181.7	160.8	188.8	168.6	149.3	157.8	April "

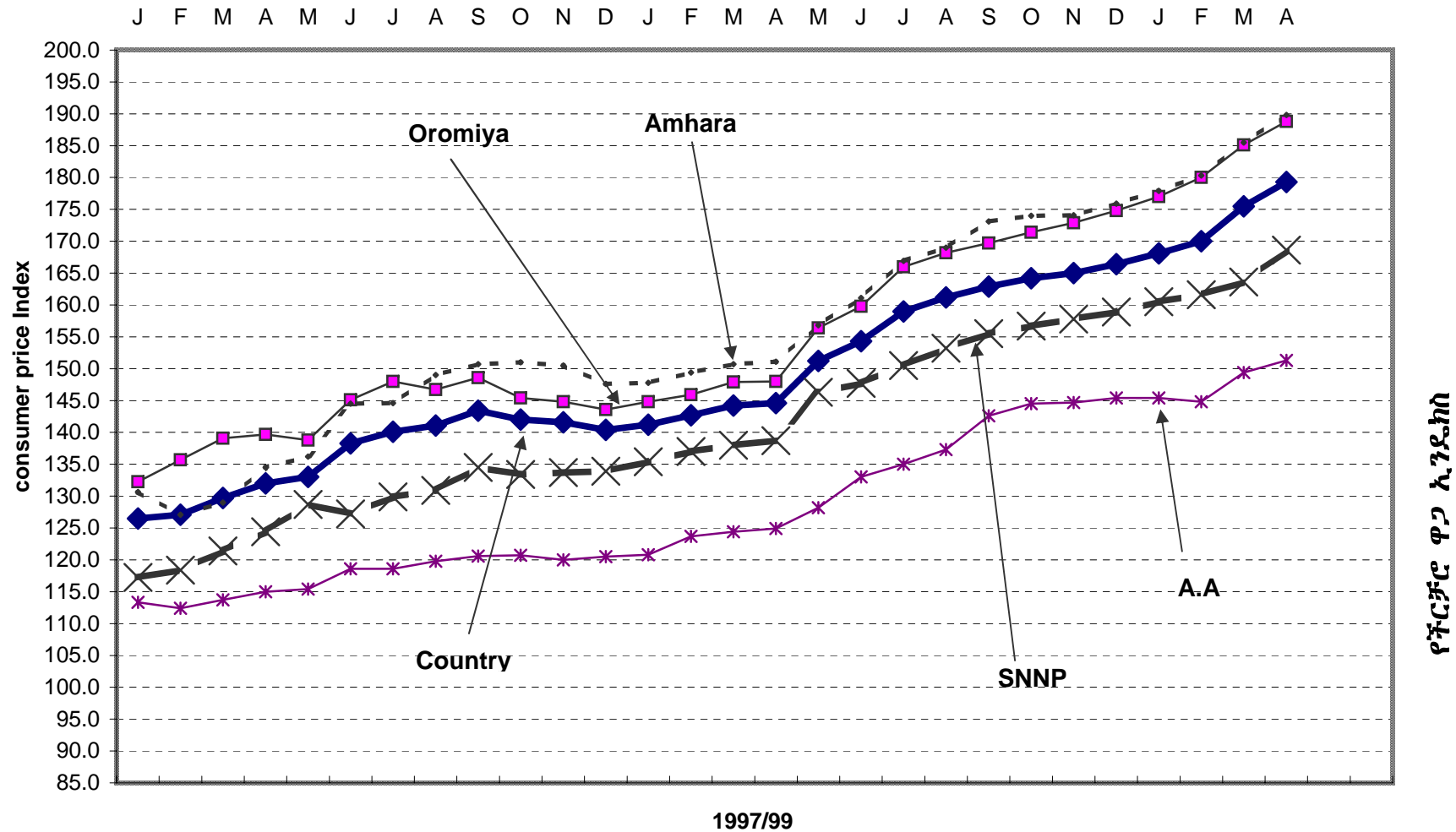
ግንዛቤ 2፡- የፍጥነት ዋጋ መጠኖች ለገጠማዊ ሀገር ላቶ ለና ለዘጠሙ ደረጃ

Table 2b: Summary of Consumer Price Indices of Food at Country and Regional Levels
December 2000=100

ወር ዓመት	Reporting Level												Month and Year
	Eth.	A.A.	Afar	Amhara	B.Gumuz	D.Dawa	Gambela	Harari	Oromia	SNNP	Somalia	Tigray	
ፓህሌ 1993	100.0	100.0	100.0	100.0	100.0	100.0	100.0	100.0	100.0	100.0	100.0	100.0	December 2000
ኅረት - ሰኔ 1993	101.3	98.3	98.7	102.1	98.2	100.9	102.0	103.5	102.9	97.5	99.7	102.6	January - June 2001
ሐምሌ 1993 - ሰኔ 1994	92.8	92.3	94.3	90.3	101.1	93.4	97.0	96.6	94.0	93.0	98.6	92.8	July - June 2002
ሐምሌ 1994 - ሰኔ 1995	115.7	101.2	108.0	116.4	125.3	105.3	124.6	110.5	124.4	103.5	112.8	112.3	July 2002 - June 2003
ሐምሌ 1995 - ሰኔ 1996	129.4	110.0	116.4	136.7	158.9	108.9	135.7	115.4	137.0	113.6	112.7	118.7	July 2003 - June 2004
ሐምሌ 1996 - ሰኔ 1997	139.3	116.2	116.6	147.4	167.2	114.5	149.5	120.0	147.4	124.2	124.1	129.4	July 2004 - June 2005
ሐምሌ 1997 - ሰኔ 1998	158.8	131.3	130.6	169.0	181.6	130.1	173.7	139.1	165.9	143.6	149.2	145.4	July 2005 - June 2006
ሐምሌ 1998 - ሰኔ 1999	188.8	164.4	156.6	197.7	204.7	149.5	201.2	162.7	201.3	173.4	161.9	160.3	July 2006 - June 2007
1998													2005/2006
ሰኔ 1998	170.5	145.6	142.8	177.0	194.5	139.2	188.8	152.4	179.8	158.5	156.7	148.4	June 2006
1999													2006/2007
ሐምሌ 1998	175.8	147.5	143.4	182.3	196.2	138.8	188.7	154.0	186.8	163.1	160.5	151.9	July 2006
ክለሳ 1998	178.3	150.7	145.0	184.4	196.9	141.7	193.9	156.9	189.2	166.4	162.4	153.7	August "
መስከረም 1999	181.0	155.1	148.6	188.5	200.2	144.1	193.4	159.8	191.3	168.2	163.0	154.8	September "
ተኅሣሥ 1999	181.9	159.3	150.6	190.3	201.4	145.0	195.6	160.6	193.6	169.6	163.6	156.3	October "
ሠርዓ 1999	182.8	159.4	151.5	190.5	202.6	145.1	197.3	160.1	195.4	170.5	162.3	156.4	November "
ፓህሌ 1999	184.4	161.5	151.6	192.6	204.5	146.8	196.7	160.3	197.5	171.4	161.5	155.5	December "
ኅረት 1999	186.4	163.8	152.0	194.8	204.5	146.4	194.9	161.5	199.8	172.9	162.0	156.9	January 2007
የቀብት 1999	190.1	165.3	153.5	199.2	202.9	148.7	198.8	160.8	204.4	173.8	161.4	158.3	February "
ጠቅላይ 1999	196.6	174.3	168.0	205.2	210.9	160.7	210.3	170.8	210.8	176.9	163.6	165.8	March "
ሚያዝያ 1999	201.7	176.7	175.2	212.7	208.1	160.3	219.4	166.7	215.5	182.0	163.7	168.0	April "

General CPI for Country Level and Major Regions
ጠቅላላ የችርቻሮ ዋጋ ኢንዱክስ ለአገር አቀፍና ለዋና ዋና ክልሎች

2005/2007



Food CPI for Country Level and Major Regions
የምግብ የችርቻሮ ዋጋ ኢንዱክስ ለአገር አቀፍና ለዋና ዋና ክልሎች
2005/2007

